

## Installation Instructions

### INSTRUCTIONS PERTAINING TO A RISK OF FIRE, OR INJURY TO PERSONS. IMPORTANT SAFETY INSTRUCTIONS

#### Warning! To reduce the risk of FIRE OR INJURY TO PERSONS:

1. Do not touch luminaire while lamp is on. Turn off/unplug and allow to cool before replacing lamp.
2. Lamp gets HOT quickly! Contact only switch/plug when turning on.
3. Do not touch hot lens, body, cap, or knuckle.
4. Keep lamp away from materials that may burn.
5. Do not touch lamp at any time. Use a soft cloth. Oil from your skin may damage lamp.
6. Do not operate the luminaire with damaged or missing parts.
8. Do not install luminaire within 10 feet of a pool, spa, or fountain.
9. Have fixture installed in accordance with all applicable installation codes and standards by a person familiar with the construction and operation of the fixture and the hazards involved.
10. Use only cable properly rated for the application. Cable buried more than 6" must be suitable for direct burial. Direct burial cable may be ordered from Vision3 Lighting.

### SAVE THESE INSTRUCTIONS

#### Un-assemble & Inspect:

1. Unpack the MO1 Stake Mount from its shipping container. Note: Depending on the options ordered, the MO1 Stake Mount may be packaged partially un-assembled for ease of handling and shipping.
2. Check that there are no damaged or missing components.
3. If the Stake Cap is assembled to the Stake Body, loosen the three Cap Screw's using a 3/32" hex tool.
4. Remove the Stake Cap from the Stake Body.

#### Install Stake Body In-grade:

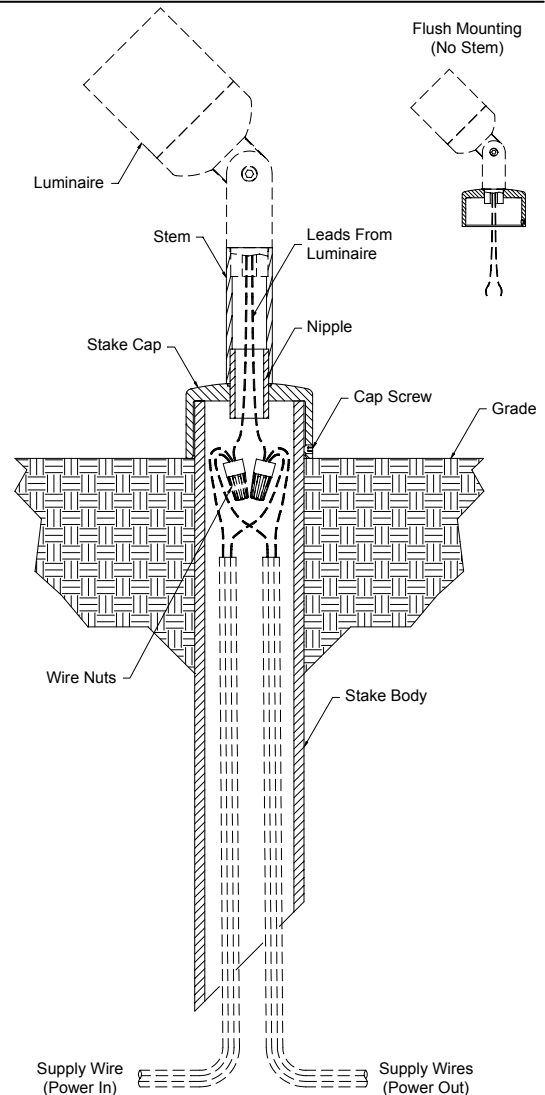
1. At the desired location, prepare an appropriate size hole for the stake.
2. Run conduit and/or cable (not supplied) to the prepared hole.  
Note: Check all applicable building codes for requirements regarding landscape lighting conduit and cable.
3. Feed the supply wires (not supplied) through the bottom of the stake, leaving enough extended for wiring to the luminaire leads.
4. Place the stake in-grade so that the line on the grade label is at grade. Note: Use caution when placing the stake to avoid damaging the supply wires.
5. Secure the stake in-grade by filling in the hole.

#### Make electrical connections:

1. Pull the leads from the luminaire through the Stem, or Stake Cap if a stem option is not being used.
2. Thread the luminaire on to the Stem, or Stake Cap.
3. If a Stem option is being used; thread the Stem onto the Stake Cap using the Nipple.
4. Strip and clean the leads from the luminaire and the supply wires.
5. Using the appropriate sized wire nuts (not supplied), connect the leads from the luminaire to the supply wires. Note: Check all applicable building codes for requirements regarding appropriate size and usage of wire nuts. It is also recommended that watertight wire nuts be used.

#### Re-assemble:

1. Carefully slip all wiring and connectors into the stake.
2. Place the Cap/Stem/Luminaire assembly on the Stake.
3. Rotate the Stake Cap to aim luminaire in the proper direction. Refer to luminaire installation instruction sheet for vertical aiming procedure.
4. Tighten the three Cap Screws using a 3/32" hex tool.



## Installation Instructions

### INSTRUCTIONS PERTAINING TO A RISK OF FIRE, OR INJURY TO PERSONS. IMPORTANT SAFETY INSTRUCTIONS

#### Warning! To reduce the risk of FIRE OR INJURY TO PERSONS:

1. Do not touch luminaire while lamp is on. Turn off/unplug and allow to cool before replacing lamp.
2. Lamp gets HOT quickly! Contact only switch/plug when turning on.
3. Do not touch hot lens, body, cap, or knuckle.
4. Keep lamp away from materials that may burn.
5. Do not touch lamp at any time. Use a soft cloth. Oil from your skin may damage lamp.
6. Do not operate the luminaire with damaged or missing parts.
8. Do not install luminaire within 10 feet of a pool, spa, or fountain.
9. Have fixture installed in accordance with all applicable installation codes and standards by a person familiar with the construction and operation of the fixture and the hazards involved.
10. Use only cable properly rated for the application. Cable buried more than 6" must be suitable for direct burial. Direct burial cable may be ordered from Vision3 Lighting.

### SAVE THESE INSTRUCTIONS

#### Un-assemble & Inspect:

1. Unpack the MO1 Adjustable Stake Mount from its shipping container.  
Note: Depending on the options ordered, the MO1 Adjustable Stake Mount may be packaged partially un-assembled for ease of handling and shipping.
2. Check that there are no damaged or missing components.
3. If the Adjustable Stake Cap is assembled to the Stake Body, loosen the three Cap Screw's and three Stem Lock Screws using a 3/32" hex tool.
4. Remove the Adjustable Stake Cap and Stem from the Stake Body.

#### Install Stake Body In-grade:

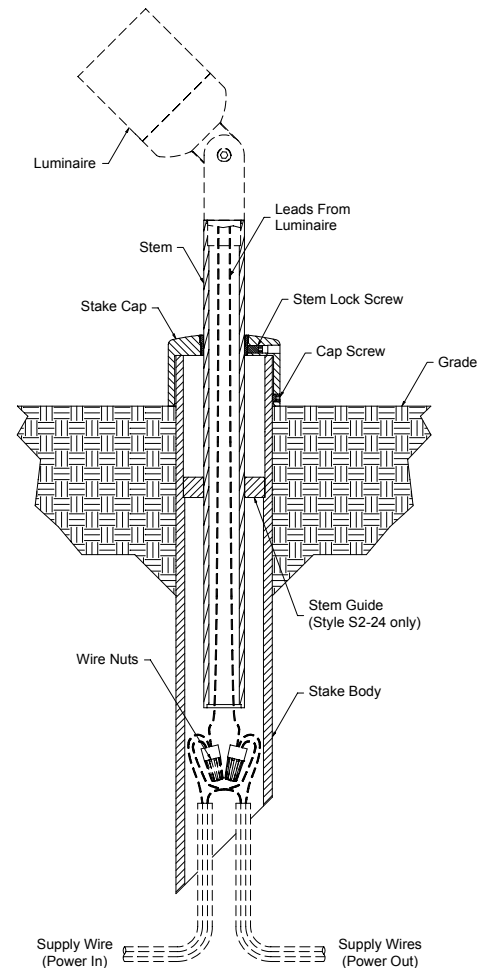
1. At the desired location, prepare an appropriate size hole for the stake.
2. Run conduit and/or cable (not supplied) to the prepared hole. Note: Check all applicable building codes for requirements regarding landscape lighting conduit and cable.
3. Feed the supply wires (not supplied) through the bottom of the stake, leaving enough wire extended to allow for adjustment of stem after luminaire is mounted.
4. Place the stake in-grade so that the line on the grade label is at grade.  
Note: Use caution when placing the stake to avoid damaging the supply wires.
5. Secure the stake in-grade by filling in the hole.

#### Make electrical connections:

1. Pull the leads from the luminaire through the Stem.
2. Thread the luminaire on to the Stem.
3. Slide the luminaire leads and Stem through the top of the Adjustable Stake Cap.
4. Strip and clean the leads from the luminaire and the supply wires.
5. Using the appropriate sized wire nuts (not supplied), connect the leads from the luminaire to the supply wires. Note: Check all applicable building codes for requirements regarding appropriate size and usage of wire nuts. It is also recommended that watertight wire nuts be used.

#### Re-assemble:

1. Carefully slip all wiring and connectors into the stake.
2. Place the Cap/Stem/Luminaire assembly on the Stake. Note: The 24" adjustable MO1 has a Guide in the Stake Body. Carefully feed wiring and connectors through the guide before pushing stem through. Alternatively, you may feed the wire nuts into the stem to protect them during installation of Cap/Stem/Luminaire assembly
3. Raise or lower the Stem so that the luminaire is at the desired height.
4. Tighten the three Stem Lock Screws using a 3/32" hex tool.
5. Rotate the Stake Cap to aim luminaire in the proper direction. Refer to luminaire installation instruction sheet for vertical aiming procedure.
6. Tighten the three Cap Screws using a 3/32" hex tool.



## Installation Instructions

### INSTRUCTIONS PERTAINING TO A RISK OF FIRE, OR INJURY TO PERSONS. IMPORTANT SAFETY INSTRUCTIONS

#### Warning! To reduce the risk of FIRE OR INJURY TO PERSONS:

1. Do not touch luminaire while lamp is on. Turn off/unplug and allow to cool before replacing lamp.
2. Lamp gets HOT quickly! Contact only switch/plug when turning on.
3. Do not touch hot lens, body, cap, or knuckle.
4. Keep lamp away from materials that may burn.
5. Do not touch lamp at any time. Use a soft cloth. Oil from your skin may damage lamp.
6. Do not operate the luminaire with damaged or missing parts.
8. Do not install luminaire within 10 feet of a pool, spa, or fountain.
9. Have fixture installed in accordance with all applicable installation codes and standards by a person familiar with the construction and operation of the fixture and the hazards involved.
10. Use only cable properly rated for the application. Cable buried more than 6" must be suitable for direct burial. Direct burial cable may be ordered from Vision3 Lighting.
11. MO1 housing is intended for use in wet locations only and should not be used where it may become submersed in water.
12. **All conduit must be properly attached to the housing and sealed at the fixture. Sealing the conduit entering each fixture prevents any leaks from traveling through the conduit system and causing catastrophic transformer failures. Failure to cap unused conduit entry slip fittings or seal any conduit entering the housing will void the warranty.**

#### SAVE THESE INSTRUCTIONS

##### Un-assemble & Inspect:

1. Unpack the MO1 Junction Mount with Transformer from its shipping container. Note: The MO1 Junction Mount with Transformer may be packaged partially un-assembled for ease of handling and shipping.
2. Check that there are no damaged or missing components.
3. Loosen the three Cap Screw's using a 3/32" hex tool.
4. Remove the Stake Cap from the Stake Body.

##### Install Stake Body In-grade:

1. At the desired location, prepare an appropriate size hole for the stake.
2. Run conduit (not supplied) to the prepared hole. Note: Check all applicable building codes for requirements regarding landscape lighting conduit and cable.
3. Place the stake in-grade and attach the supply conduit to the Conduit Entry fittings on the Stake Body using PVC cement appropriate for underground electrical conduit. Cap any unused Conduit Slip Fittings with the appropriate plug and PVC cement to prevent leaking. Seal conduit entering the housing to prevent any water that may leak in to the conduit system from entering the housing and causing catastrophic failures.

**Note: All conduit must be sealed at the fixture. Failure to cap unused conduit entry slip fittings or seal any conduit entering the housing will void the warranty.**

4. Adjust the stake so that the line on the grade label is at grade.
5. Secure the stake in-grade by filling in the hole.
6. Feed enough supply wiring through the conduit into the Stake Body to facilitate connection with luminaire.

##### Make electrical connections:

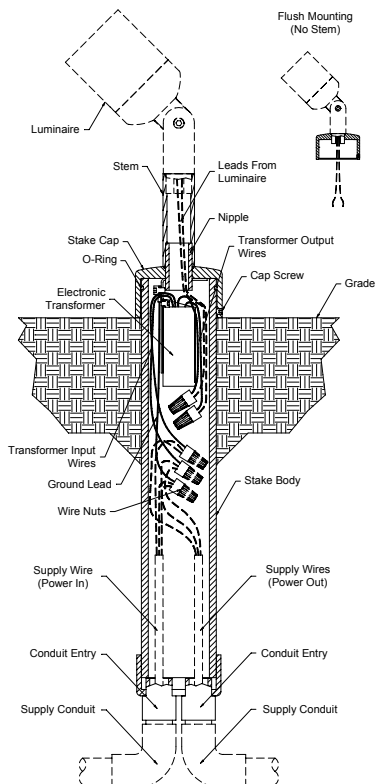
1. If the MO1 Junction Mount with Transformer is purchased from Vision3 Lighting with a luminaire, the luminaire will be wired to the transformer at the factory. Go to step 7.
2. Pull the leads from the luminaire through the Stem, or Stake Cap if a stem option is not being used.
3. Thread the luminaire on to the Stem, or Stake Cap.
4. If a Stem option is being used; thread the Stem onto the Stake Cap using the Nipple.
5. Strip and clean the leads from the luminaire and the Transformer Output Wires.
6. Using the appropriate sized wire nuts (not supplied), connect

the leads from the luminaire to the red Transformer Output Wires. Note: Check all applicable building codes for requirements regarding appropriate size and usage of wire nuts.

7. Using the appropriate sized wire nuts (not supplied), connect the supply wires to the black and white Transformer Input Wires. Note: Check that the transformer is correctly rated for the supply power.
8. Using the appropriate sized wire nut (not supplied), connect the supply ground wire to the green Ground Lead coming from the bracket holding the Transformer.

##### Re-assemble:

1. Carefully slip all wiring and connectors into the stake.
2. Clean O-Ring and examine for any nicks or cuts.
3. Place the Cap assembly on the Stake. Note: Twisting cap while pushing over O-Ring will ease installation.
4. Rotate the Stake Cap to aim. Refer to luminaire installation instruction sheet for vertical aiming procedure.
5. Tighten the three Cap Screws using a 3/32" hex tool.



## Installation Instructions

### INSTRUCTIONS PERTAINING TO A RISK OF FIRE, OR INJURY TO PERSONS. IMPORTANT SAFETY INSTRUCTIONS

#### Warning! To reduce the risk of FIRE OR INJURY TO PERSONS:

1. Do not touch luminaire while lamp is on. Turn off/unplug and allow to cool before replacing lamp.
2. Lamp gets HOT quickly! Contact only switch/plug when turning on.
3. Do not touch hot lens, body, cap, or knuckle.
4. Keep lamp away from materials that may burn.
5. Do not touch lamp at any time. Use a soft cloth. Oil from your skin may damage lamp.
6. Do not operate the luminaire with damaged or missing parts.
8. Do not install luminaire within 10 feet of a pool, spa, or fountain.
9. Have fixture installed in accordance with all applicable installation codes and standards by a person familiar with the construction and operation of the fixture and the hazards involved.
10. Use only cable properly rated for the application. Cable buried more than 6" must be suitable for direct burial. Direct burial cable may be ordered from Vision3 Lighting.
11. MO1 housing is intended for use in wet locations only and should not be used where it may become submersed in water.
12. **All conduit must be properly attached to the housing and sealed at the fixture. Sealing the conduit entering each fixture prevents any leaks from traveling through the conduit system and causing catastrophic failures. Failure to cap unused conduit entry slip fittings or seal any conduit entering the housing will void the warranty.**

### SAVE THESE INSTRUCTIONS

#### Un-assemble & Inspect:

1. Unpack the MO1 Junction Mount from its shipping container. Note: The MO1 Junction Mount may be packaged partially un-assembled for ease of handling and shipping.
2. Check that there are no damaged or missing components.
3. Loosen the three Cap Screw's using a 3/32" hex tool.
4. Remove the Stake Cap from the Stake Body.

#### Install Stake Body In-grade:

1. At the desired location, prepare an appropriate size hole for the stake.
2. Run conduit (not supplied) to the prepared hole. Note: Check all applicable building codes for requirements regarding landscape lighting conduit and cable.
3. Place the stake in-grade and attach the supply conduit to the Conduit Entry fittings on the Stake Body using PVC cement appropriate for underground electrical conduit. Cap any unused Conduit Slip Fittings with the appropriate plug and PVC cement to prevent leaking. Seal conduit entering the housing to prevent any water that may leak in to the conduit system from entering the housing and causing catastrophic failures. **Note: All conduit must be sealed at the fixture. Failure to cap unused conduit entry slip fittings or seal any conduit entering the housing will void the warranty.**
4. Adjust the stake so that the line on the grade label is at grade.
5. Secure the stake in-grade by filling in the hole.
6. Feed enough supply wiring through the conduit into the Stake Body to facilitate connection with luminaire.

#### Make electrical connections:

1. Pull the leads from the luminaire through the Stem, or Stake Cap if a stem option is not being used.
2. Thread the luminaire on to the Stem, or Stake Cap.
3. If a Stem option is being used; thread the Stem onto the Stake Cap using the Nipple.
4. Strip and clean the leads from the luminaire and the Supply Wires.
5. Using the appropriate sized wire nuts (not supplied), connect the leads from the luminaire to the supply leads, including ground, if applicable. Note: Check that luminaire is correctly rated for supply power.

#### Re-assemble:

1. Carefully slip all wiring and connectors into the stake.
2. Clean O-Ring and examine for any nicks or cuts.
3. Place the Cap assembly on the Stake. Note: Twisting cap while pushing over O-Ring will ease installation.
4. Rotate the Stake Cap to aim. Refer to luminaire installation instruction sheet for vertical aiming procedure.
5. Tighten the three Cap Screws using a 3/32" hex tool.

