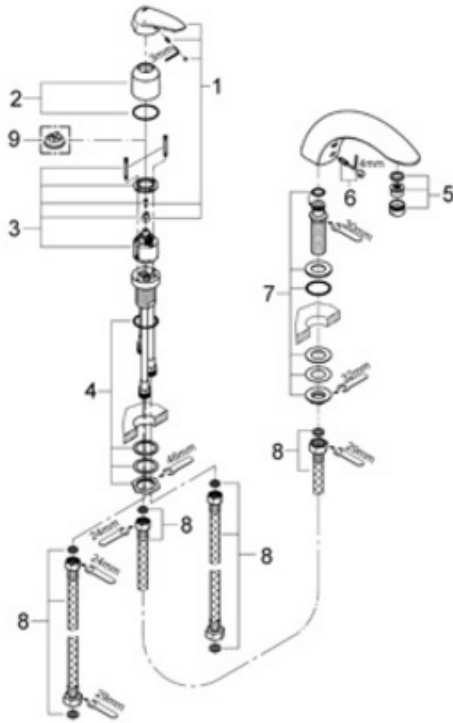


**Exploded View**



**Parts Breakdown**

Pos No.	Spare Part Description	Product No.	Pcs.
	<b>32 337</b>		
1	Eurodisc handle	46 439	1
2	Cover cap	46 243	1
3	Ceramic cartridge	46 048	1
4	Mounting set	45 164	1
5	Flow control	13 907	1
6	Spout fitting set	45 833	1
7	Mounting shank	45 163	1
8	Inlet supply	45 449	1
	<b>Special Accessories</b>		
9	Temperature limit stop	46 308	1