

DAVIS

LUCID  
CHAIR  
SERIES



Designed by Burkhard Vogtherr

L U C I D

C H A I R

S E R I E S

F R O M

D A V I S



LUCID...original, 10, 20, 30 series

The original design of Lucid with a black plastic back offers a true “passive” ergonomic chair with its patented mechanism and center-pivoting back. This design allows for full body movement mimicking every twist and turn of the user’s body.

Then a marriage of the webbed back and Lucid mechanism created the Lucid 10. It offers the comfort of the Webb Chair but with different aesthetics and mechanism.

Now, Davis has added two new series that offer larger scaled chairs with a more executive appeal. The Lucid 20 and Lucid 30 Series has a wider and deeper seat in either an ultra mid or ultra high back heights. Lucid 20 and Lucid 30 also have a more tapered arm and back rail design, along with a larger castered base.

To complete this program two new back options were added along with the webbed back offering — Upholstered and Knitted. All three back styles are available on Lucid 10, Lucid 20, and Lucid 30 Series.

Lucid Series



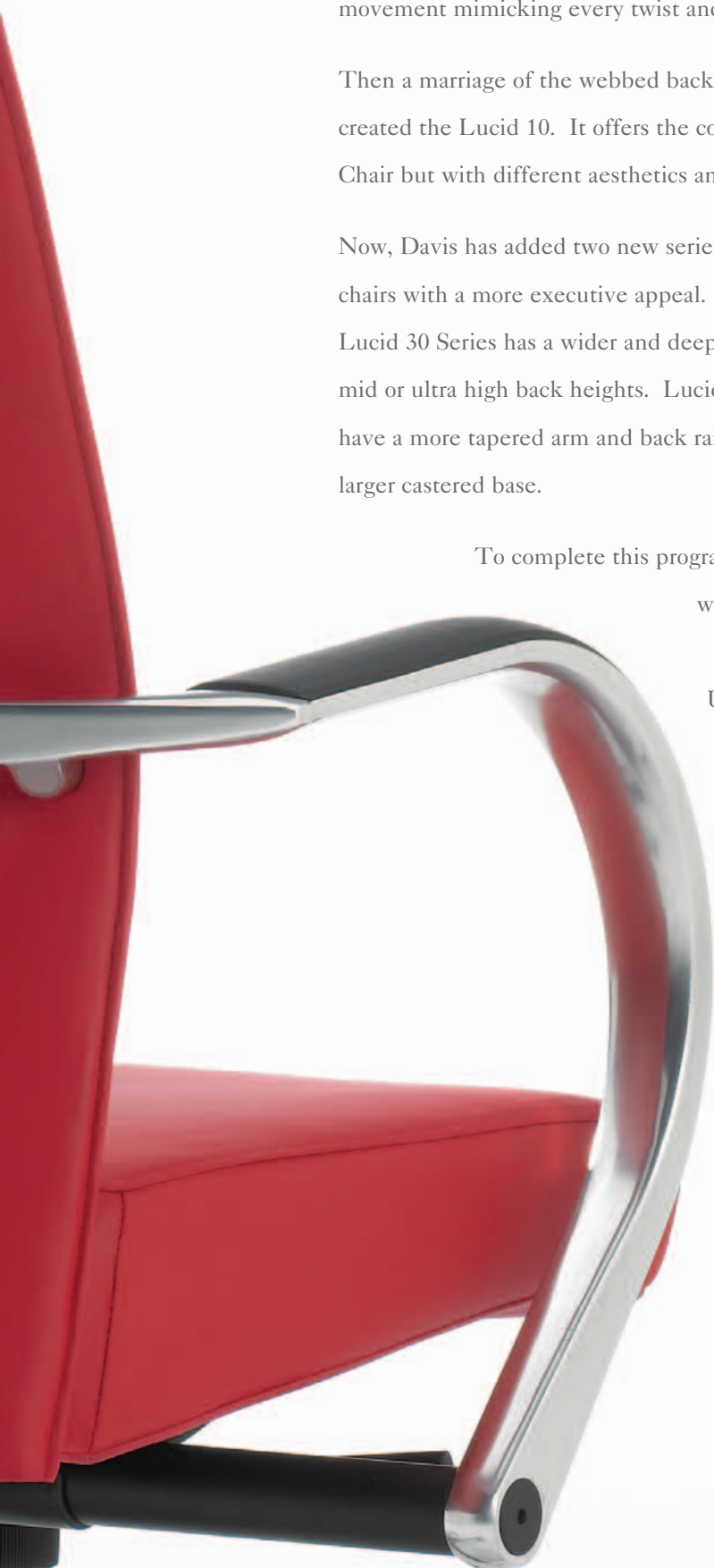
Lucid 10 Series



Lucid 20 Series



Lucid 30 Series



## LUCID...the family

With the new additions of the Lucid 20 & Lucid 30 Series at NeoCon® 2004, Davis has created a complete “family” of chairs for the Lucid Series. This family offers a range of back designs — plastic back with interior upholstered or jacket cover options, webbed, upholstered, and knitted. This series also is available in a variety of chair sizes to suit individual needs in conferencing, task, and executive levels.





Lucid 1  
black plastic back



Lucid 1U  
upholstered insert back



Lucid 1  
jacket covered back

### Lucid Original Series...

- ...black plastic back
- ...upholstered insert back
- ...jacket covered back
- ...single pivot point back
- ...black plastic arm cap standard
- ...short or long upholstered arm cap options
- ...synchro-tilt mechanism option



Lucid 10  
webbed back



Lucid 11  
upholstered back



Lucid 12  
knitted back

### Lucid 10 Series...

- ...webbed back
- ...upholstered back
- ...knitted back
- ...black plastic arm cap standard
- ...short or long upholstered arm cap options
- ...synchro-tilt mechanism option



Lucid 20  
webbed back



Lucid 21  
upholstered back



Lucid 22  
knitted back

### Lucid 20 Series...

- ...larger scale ultra mid back
- ...webbed back
- ...upholstered back
- ...knitted back
- ...tapered arm with black plastic insert
- ...black upholstered inlay option
- ...synchro-tilt mechanism option



Lucid 30  
webbed back



Lucid 31  
upholstered back



Lucid 32  
knitted back

### Lucid 30 Series...

- ...larger scale ultra high back
- ...adjustable headrest
- ...webbed back
- ...upholstered back
- ...knitted back
- ...tapered arm with black plastic insert
- ...black upholstered inlay option
- ...synchro-tilt mechanism option



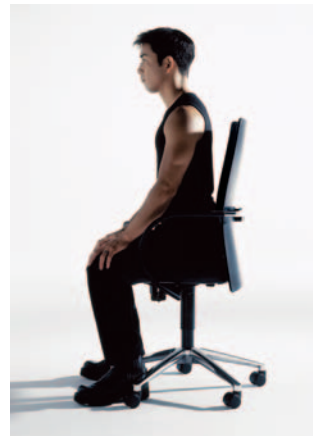
the heart...  
 an “active control node”...  
 single point pivot...  
 passive ergonomics...  
 full range of body movements...  
 in three dimensions...  
 intelligent...



## LUCID...the original

The vision of Burkhard Vogtherr, designer of Lucid, began to take shape with the concept of a single flexible mounting point...

an active control node. This node would allow the backrest to echo a wide range of user body positions, in three dimensions, without user intervention or adjustment. The effect of the node is to equalize the support pressure on the user’s back, regardless of the position.



This ergonomic chair concept advances individual comfort, and at the same time simplifies the effort on the part of the user. It frees the user to rotate, tilt front to back, and side to side...in a natural body motion.



High Back



Mid Back

## LUCID...quick change

As an added feature, there is an onboard tool that allows you to remove the high back and turn it around in the field to create a mid back, or vice versa. This gives the user more flexibility and is advantageous for standard programs.



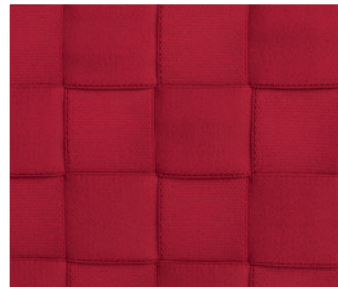
Lucid 30-MSMS and Lucid 10-MSMS-MS  
Both in WB-Candy Red and DL-2003 Candy Red Leather



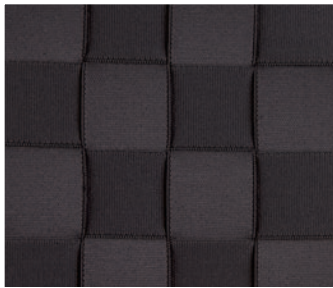
WB-Natural



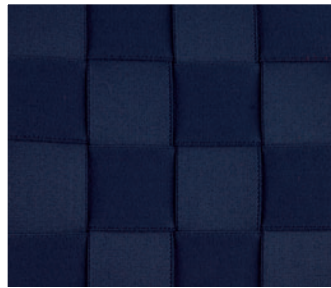
WB-Dove



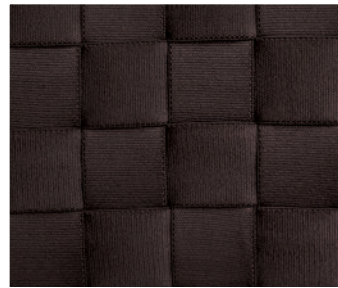
WB-Candy Red



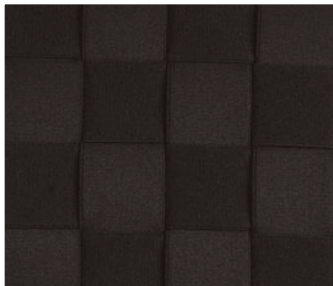
WB-Grey



WB-Royal



WB-Coco



WB-Black



WB-Stripe (vertical)



WB-Stripe (horizontal)

### LUCID ...webbed backs

Now available on all Lucid 10, Lucid 20, and Lucid 30 Series are nine webbing selections. This flexible woven back is constructed of a special webbing tape developed with DuPont originally for the Webb Chair Series. The body of the tape is composed of two-ply polyester yarn chosen for resistance to staining and abrasion, cleanability, ease of dyeing, and colorfastness.

The elastomer component (DuPont LYCRA® spandex) is wrapped with the polyester and adds superior, long term performance and resilience.

This combination of materials conforms with the user's movements in a new way that attains the highest level of comfort.



Lucid 31-CHCH, Lucid 21-CHCH, and Lucid 11-CHCH-CH



Interior Upholstered Insert on Black Plastic Back

L U C I D ...upholstered backs

### Black Plastic Back Upholstered Options

The original Lucid series is offered with an *upholstered insert* on all models with the “U” indication. This insert has an interior foam layer that gives an additional softer comfort level in the back. It is attached to the interior of the black plastic back and maintains the passive ergonomic movement the center pivoting back offers. It may be specified in most textiles and leathers.



Jacket Back Cover Option on Black Plastic Back

The black plastic back may also be ordered with the optional *jacket cover* which is socked over the plastic back. It also has interior foam for comfort and may be specified in most textiles and leathers. Jackets are ordered according to the product style in either a high or mid back indication.



Fully Upholstered on Lucid 10, 20, and 30 Series

### Lucid 10, 20, and 30 Series Upholstered Option

The fully upholstered style is available on the three series as Lucid 11, Lucid 21, and Lucid 31. This upholstery treatment has comfort wrinkles on the front for added comfort in the back support. A thin profile is maintained through a special interior construction that has integrated support supplied from webbing straps. Most textiles and leathers may be specified for this upholstery treatment.

## LUCID ...knitted backs

As an alternative to the webbed back, Davis has engineered a new type of knitted back that offers the same individual back support as the original webbed back. The back is knitted like a sweater in one-piece with the same polyester wrapped Lycra® yarns as used in the original webbing.

The back support is achieved through the stretch that this fiber inherently brings to the design, and is an alternative to the visual pattern the webbed back offers. It is available only in black.



Lucid 32-MSMS



Lucid 22-MSMS



## LUCID... arm styles

The sleek radius arms enhance the clean, classic design of the Lucid 1 through 12 models. Castered base chairs are standard with black plastic arm caps, which offer extra protection for the arm. As options, the radius arms may be specified with hand-sewn long or short leather wrapped arm covers. Cantilever chairs are standard with short leather arm covers.

Lucid 20 and Lucid 30 Series has tapered arms that add a unique dimension to the overall design. Scaled larger for the enhanced chair size these arms offer a black plastic insert as standard. Optional upholstered inlays of black faux leather over high density foam are also available.



Hand-sewn Arm Covers



Black Plastic Arm Cap  
(standard)



Short Leather Arm Covers  
LU-SLAC (optional)



Long Leather Arm Covers  
LU-LLAC (optional)



Black Plastic Insert standard on Lucid 10, 20, and 30 Series



Black Upholstered Inlay Option on Lucid 10, 20, and 30 Series



## LUCID... mechanism

The simplicity of working in Lucid is easy...

a few simple settings for personal fit and that's it. Passive ergonomic movement allows you to forget the chair and concentrate on your task at hand. The original chair mechanism for Lucid was a proprietary design for Davis. This mechanism has two levers — one for height adjustment and one for locking the back in an upright position. The seat adjusts 2" in depth to accommodate individual requirements.

An optional Synchro-Tilt can be added to the standard mechanism with a synchron ratio of 2.5 to 1; that is for 1 degree of seat tilt, the back moves 2.5 degrees.

*One time adjustments to user —*

- 1- adjust seat depth to user's thighs
- 2- adjust seat height to user's legs
- 3- adjust balance spring to user's weight

*Selective work positions —*

- 4- pull lever "forward"  
to stop back tilt;  
push lever "back"  
for full back tilt

2- Seat Height Adjustment  
(lever on right of seat  
behind arm)

3- Balance Spring  
(center knob)

4- Back Tilt Lock  
(lever on left of seat  
in front of arm)

1- Seat Length Adjustment  
(knob under seat)

Upright Locked Position

Full Tilt Position



LUCID...original specifications

**Lucid 1 & Lucid 1U**

Overall 22 1/2 W 23 3/4 - 25 3/4 D 39 - 43 3/4 H  
 Inside 18 3/4 W 16 3/4 - 18 3/4 D 21 H  
 Arm Ht. 25 3/8 - 30 3/8  
 Seat Ht. 17 7/8 - 22 5/8

**Lucid 2 & Lucid 2U**

Overall 22 1/2 W 23 3/4 - 25 3/4 D 34 3/4 - 39 1/2 H  
 Inside 18 3/4 W 16 3/4 - 18 3/4 D 17 H  
 Arm Ht. 25 3/8 - 30 3/8  
 Seat Ht. 17 7/8 - 22 5/8

**Lucid 4 & Lucid 4U**

Overall 23 W 21 1/4 D 39 3/4 H  
 Inside 18 3/4 W 16 D 21 3/4 H  
 Arm Ht. 26 3/4  
 Seat Ht. 18 1/4

**Lucid 5 & Lucid 5U**

Overall 22 1/2 W 21 1/4 D 35 1/2 H  
 Inside 18 3/4 W 16 D 17 3/4 H  
 Arm Ht. 26 3/4  
 Seat Ht. 18 1/4

**OPTIONS** (not available on all models)

**Finishes** (not all combinations offered)

- Arms Chrome  
Matte Black  
Matte Silver
- Back Rails Chrome  
Matte Black  
Matte Silver
- Base Chrome  
Matte Black  
Matte Silver

- LU-SYNCHRO** Active Seat Option
- LU-Jacket-H/M** Jacket Back Cover
- LU-LLAC** Long Leather Arm Cover
- LU-SLAC** Short Leather Arm Cover
- LU-Node** Node Finish Option



Lucid 1-MBCH-CH



Lucid 1U-CHMB-MB  
with LU-LLAC



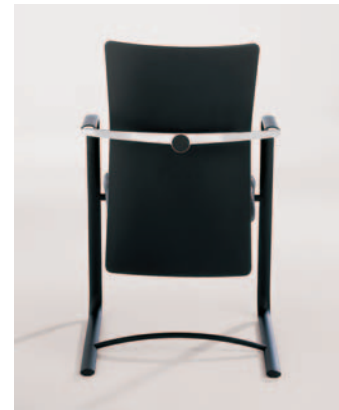
Lucid 2-MBCH-MB



Lucid 2U-CHMB-CH



Lucid 4-MBCH



Lucid 5-MBCH



Lucid 1-MBCH-CH  
with LU-Jacket-H



Lucid 4U-CHMB



Lucid 5U-CHMB

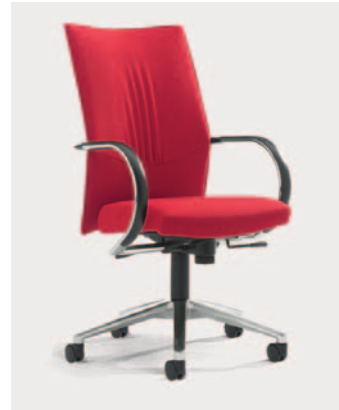
LUCID 10... specifications

**Lucid 10 — Webbed Back**

Overall 22 1/2 W 22 - 24 D 39 1/4 - 44 H  
Inside 18 3/4 W 17 1/8 - 19 1/8 D 21 H  
Arm Ht. 25 5/8 - 30 3/8  
Seat Ht. 17 7/8 - 22 5/8



Lucid 10-MBCH-CH



Lucid 11-CHCH-CH

**Lucid 11 — Upholstered Back**

Overall 22 1/2 W 22 - 24 D 39 1/4 - 44 H  
Inside 18 3/4 W 17 1/8 - 19 1/8 D 21 H  
Arm Ht. 25 5/8 - 30 3/8  
Seat Ht. 17 7/8 - 22 5/8

**Lucid 12 — Knitted Back**

Overall 22 1/2 W 22 - 24 D 39 1/4 - 44 H  
Inside 18 3/4 W 17 1/8 - 19 1/8 D 21 H  
Arm Ht. 25 5/8 - 30 3/8  
Seat Ht. 17 7/8 - 22 5/8



Lucid 12-CHCH-CH

LUCID 20... specifications

**Lucid 20 — Webbed Back**

Overall 25 1/2 W 24 - 26 D 41 3/8 - 45 1/8 H  
Inside 20 1/2 W 17 1/4 - 19 1/4 D 27 H  
Arm Ht. 27 - 30 3/4  
Seat Ht. 18 3/4 - 22 1/2



Lucid 20-CHCH



Lucid 21-CHCH

**Lucid 21 — Upholstered Back**

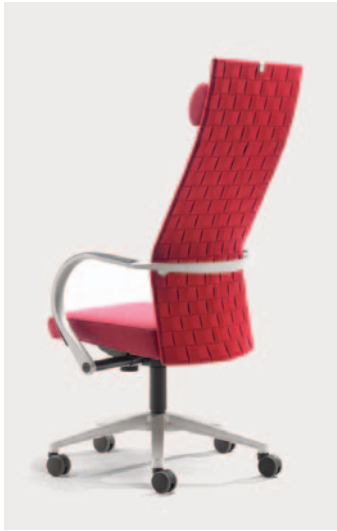
Overall 25 1/2 W 24 - 26 D 41 3/8 - 45 1/8 H  
Inside 20 1/2 W 17 1/4 - 19 1/4 D 27 H  
Arm Ht. 27 - 30 3/4  
Seat Ht. 18 3/4 - 22 1/2

**Lucid 22 — Knitted Back**

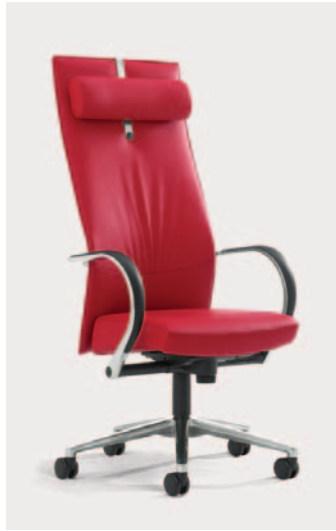
Overall 25 1/2 W 24 - 26 D 41 3/8 - 45 1/8 H  
Inside 20 1/2 W 17 1/4 - 19 1/4 D 27 H  
Arm Ht. 27 - 30 3/4  
Seat Ht. 18 3/4 - 22 1/2



Lucid 22-MSMS



Lucid 30-MSMS



Lucid 31-CHCH



Lucid 32-MSMS

LUCID 30... specifications

**Lucid 30 — Webbed Back**

Overall 25½W 25¼ - 27¼D 50½ - 54¼H  
 Inside 20½W 17¼ - 19¼D 31½H  
 Arm Ht. 27 - 30¾  
 Seat Ht. 18¾ - 22½

**Lucid 31 — Upholstered Back**

Overall 25½W 25¼ - 27¼D 50½ - 54¼H  
 Inside 20½W 17¼ - 19¼D 31½H  
 Arm Ht. 27 - 30¾  
 Seat Ht. 18¾ - 22½

**Lucid 32 — Knitted Back**

Overall 25½W 25¼ - 27¼D 50½ - 54¼H  
 Inside 20½W 17¼ - 19¼D 31½H  
 Arm Ht. 27 - 30¾  
 Seat Ht. 18¾ - 22½

OPTIONS (not available on all models)

**Finishes** (not all combinations offered)

- Arms Chrome  
Matte Black  
Matte Silver
- Back Rails Chrome  
Matte Black  
Matte Silver
- Base Chrome  
Matte Black  
Matte Silver

- LU-SYNCHRO Active Seat Option
- LU-LLAC Long Leather Arm Cover
- LU-SLAC Short Leather Arm Cover
- LU-UPHAC Upholstered Arm Cap

# DAVIS

D a v i s Furniture Industries, Inc.

2401 South College Drive  
PO Box 2065  
High Point, NC 27261-2065

TEL 336 889 2009  
FAX 336 889 0031  
mail@davisfurniture.com  
www.davisfurniture.com

Designed by Burkhard Vogtherr



An EEO/AA Employer

© 2004 Davis Furniture Industries, Inc.  
Specifications subject to change without notice.  
PBM 7/2004 15M Litho in USA

