

# Architectural Pavers & Applications

## Inside

Paver Colors & Finishes  
Cool, Ocean View & Glass Pavers  
Installation Methods  
Pedestal Systems  
Roof Ballast Pavers  
ADA, Engraved & Impression Pavers  
Hex Pavers

[www.wausautile.com](http://www.wausautile.com)



# WAUSAU TILE

America's One Source™

# Contents



**Paver Colors & Finishes**  
**1 - 12**



**Installation Methods**  
**13 - 15**



**Pedestal Systems**  
**15 - 17**



**Roof Ballast Pavers**  
**17**



**ADA, Engraved & Impression Pavers**  
**18**



**Hex Pavers**  
**20**



## **Mission Statement**

Wausau Tile, founded in 1953, is dedicated to the principle of manufacturing the highest quality products, while providing the best customer service in our industry.



*Wausau Tile's innovative, successful and enduring products.*



*You've got our guarantee that any product with this logo meets Energy Star ratings.*



*Recycled glass products from Wausau Tile qualify for Green Status and LEED certification.*



*St. Mary's Hospital, MI*

# Colors and Finishes



## TYPE 1 Exposed (Direct washed surface)

Natural stone, in aggregate sizes of 3/8" to 5/8", is exposed at the surface. Nine standard colors are available by blending the aggregate colors with the matrix color tones; custom colors are available as an option. Available up to 36".



## TYPE 2 Exposed Granite Aggregate (Direct washed surface)

Six colors are achieved by blending crushed granite in sizes of 3/16" to 9/16" with complementing colored matrixes; custom colors are available as an option. Available up to 36".



*Please call for color options and samples*

## TYPE 2 Granitex

### (Direct washed surface)

Custom-sized granite aggregates, in 3/16" minus sizes, are blended in different matrix colors to give a uniform, dense surface. Twelve standard GTX colors are available, however, manufacturing custom colors to match or blend with natural granite is our speciality. Available up to 36".



Please call for color options and samples

\* Stocked in 24" Sized Pavers

### TYPE 3 Cotillion FDX

(Shot-Blasted surface)

FDX colors are made by coloring the cement matrix with standard-sized aggregate. Six standard colors, with optional custom colors, are available in sizes up to 30".

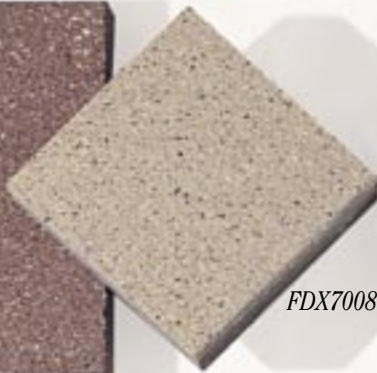
*FDX2008\**



*FDX4008\**



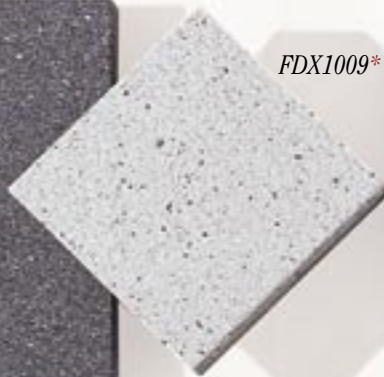
*FDX7008\**



*FDX3008*



*FDX1009\**



*FDX5008\**



### TYPE 3 Cotillion SX

(Shot-Blasted surface)

SX colors are a combination of granite and stone blended with colored matrix. The consistency in color is achieved by the exposure of aggregate in the paver surface. Custom colors are available in sizes up to 30".

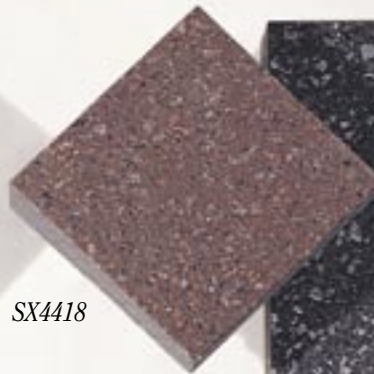
*SX2418\**



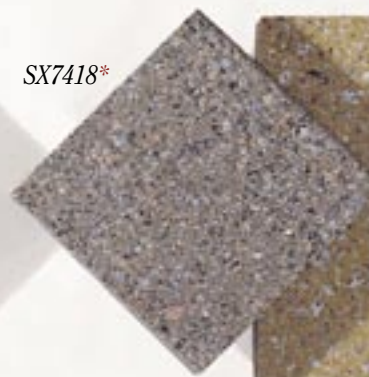
*SX3418*



*SX4418*



*SX7418\**



*SX1419*



*SX5418*



*Please call for color options and samples*

*\* Stocked in 24" Sized Pavers*

### TYPE 3 Fabritex

#### (Texture pattern surface)

Fabritex surfaces are available in slate, flagstone, travertine, sand, broomed and wood grained finishes. All surfaces can be produced in our standard or custom colors in sizes up to 36".

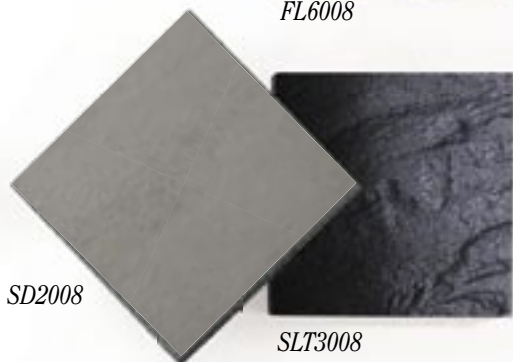


BR4008



TRV7008

FL6008



SD2008

SLT3008



WD5008

Terra-Paver colors and finishes shown are only a representation of the actual colors. Request samples for approved colors and finishes.

### TYPE 4 Stoney Creek

#### (Natural mottled color blended on stone textured surface)

Available in a ten-color spectrum that can be blended to give a wide range of color within the family, this natural stone appearance can also be made in custom colors. Available in sizes up to 36".



SC7779

SC7782



SC7509

SC7569



SC2228

SC2728



SC7869

SC7662



STL/SC3519



SC4303

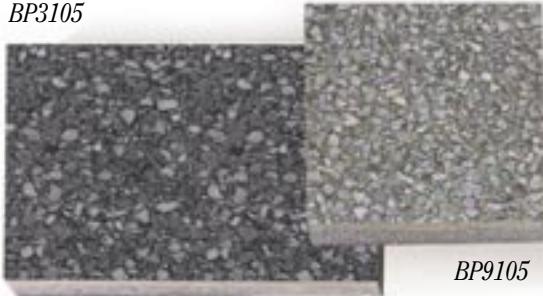
Please call for color options and samples

## NEW TYPE 5 Ground Pavers

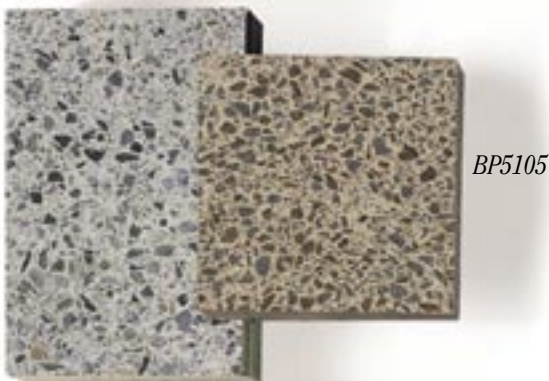
(With 5/8" aggregate)

Available in a smooth or blasted finish. Eight standard colors; also custom colors. Nominal sizes: 12", 16", 18" and 24".

BP3105

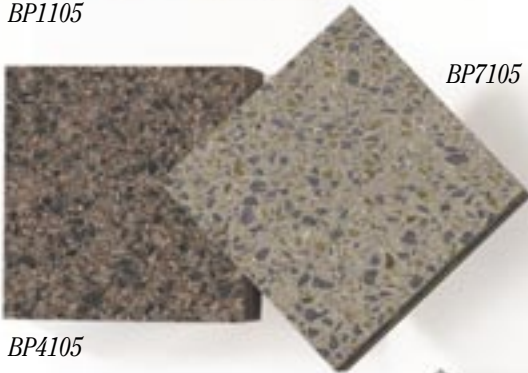


BP9105



BP5105

BP1105



BP7105

BP4105



Custom

BP2105

Please call for color options and samples

## TYPE 6 Cool Pavers

Cool Pavers have a minimum of 70% solar reflectance absorbing less heat than a standard ballast material on roof decks. The pavers will maintain a minimum of 50% reflectivity in a three-year period. The Cool Pavers are available in eight colors and six different textures. The same sizes and thicknesses as our standard pavers are also available in the Cool Pavers. Available up to 36".

CP1026



CP1073



CP1519



CP1025



CP1205



CP1215



CP1718



CP1222



You've got our guarantee that any product with this logo meets Energy Star ratings. Qualifies for Green Status and LEED certification.



*Northwestern University,  
Evanston, IL*

### **Pre-designed Original Patterns**

Save design time when you use our pre-designed Ashlar Patterns. Available in nine architectural paving styles, with six patterns to choose from, the hardest part will be choosing which style to use for your next project.

Please call for more information, or check us out on our web site,  
[www.wausautile.com](http://www.wausautile.com)



## TYPE 7 Ocean View Pavers

This beautiful series of pavers will give your design a look and feel like no other paver, while maintaining the same quality you have come to expect.



OV1505



OV8455



OV8525



OV6075



OV1025



OV5085

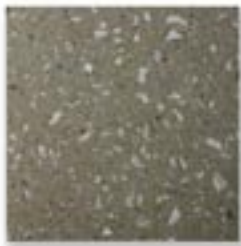


OV4505



OV5005

The seashell pavers are available in either ground and sealed or ground and blasted finishes.



OVR-0007



OVRB-0007



*Sumpter Landing, FL*





## 2nd Generation Pavers

## Type 2

## Granitex (Direct Washed Surface)



*GTX1216*



*GTX1616*



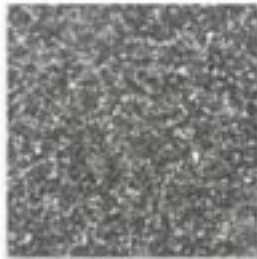
*GTX2416*



*GTX2486*



*GTX2556*



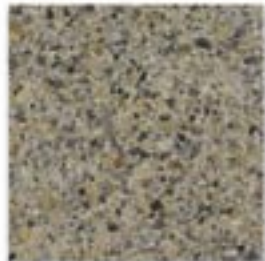
*GTX3126*



*GTX3726*



*GTX4416*



*GTX7136*



*GTX7216*



*GTX7386*



*GTX7416*



*GTX7716*



*GTX7916*



*GTX8226*



*GTX8416*

### Terra-Pavers Product Summary

Standard Sizes (Nominal): 12", 16", 18", 24", 30" and 36" square  
 Thickness: 2" to 2 3/4" - Weight: 24 to 33 lbs./sq. ft.  
 Dimensional Tolerance: +/- 1/16" (Length, width, height, convex, concave)  
**Custom sizes and thicknesses are available upon request.**

Warranty: 3 year standard. Extended warranty available.  
 Contact Wausau Tile for full warranty information.



*GTX9216*



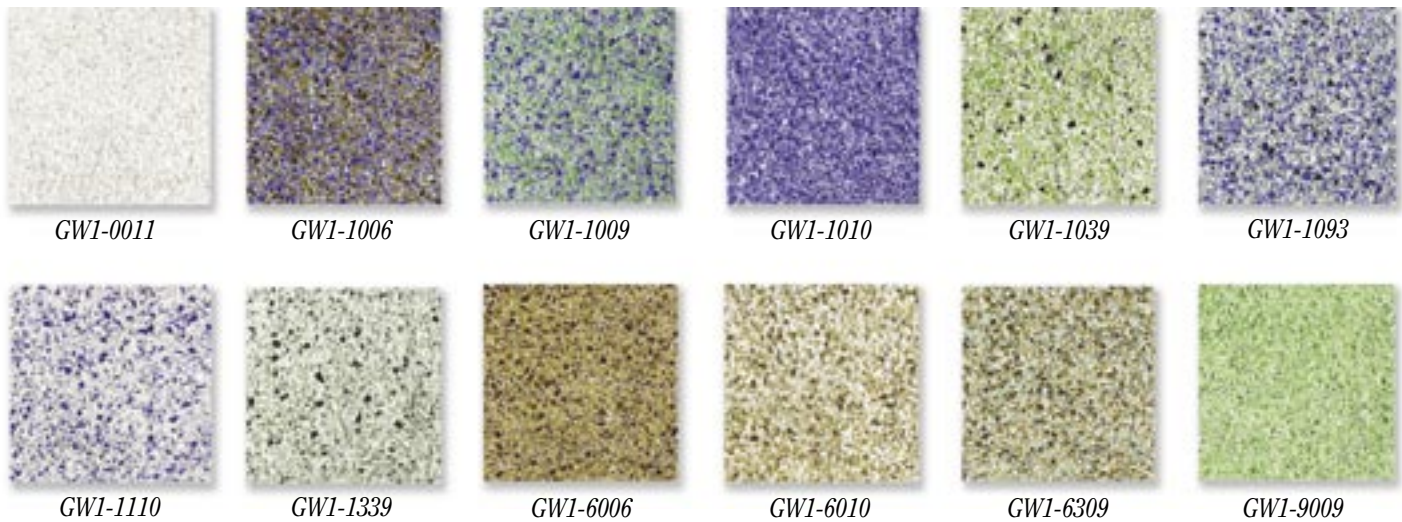
*GTX9326*

### Terra-Pavers Physical Properties

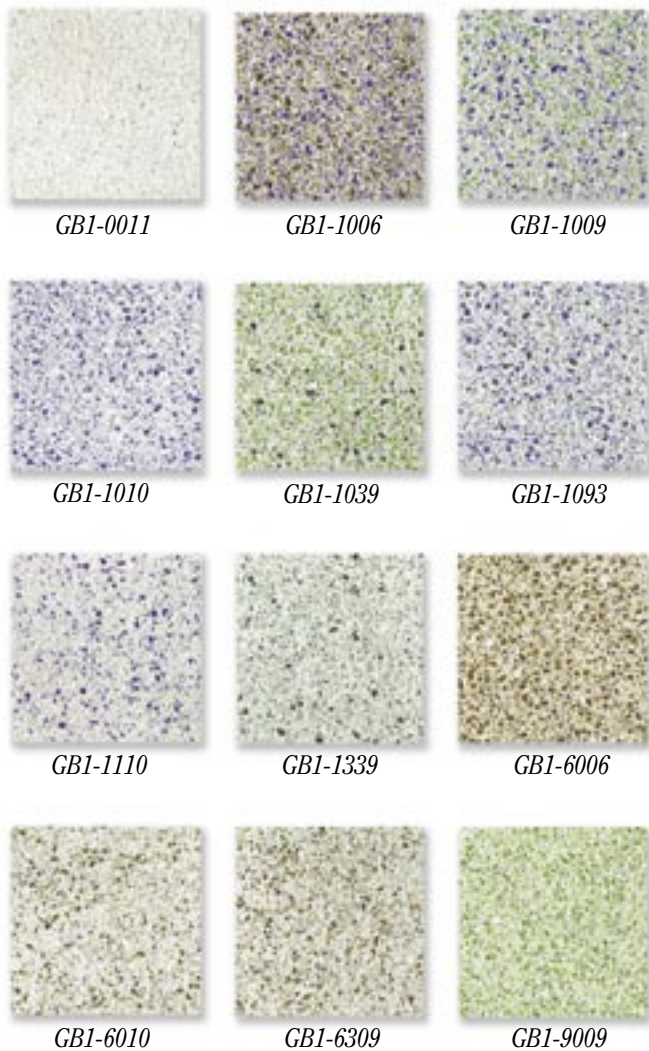
Property	Value	Test Method	Property	Value	Test Method
Compressive Strength	=>8,000 psi avg.	ASTM C140	Freeze Thaw	=< 0.5% loss of dry weight (50 cycles)	ASTM C67
Flexural Strength	=>700 psi	ASTM C293	Center Load	1,850 lbs.	WTCL 99
Water Absorption	<6%	ASTM C140			

## TYPE 8 Glass Washed Pavers

Manufactured with 100% recycled glass and available in a wide variety of colors, our Recycled Glass Pavers meet or exceed the ASTM industry standards for compressive, flexural strength, water absorption and freeze-thaw testing.

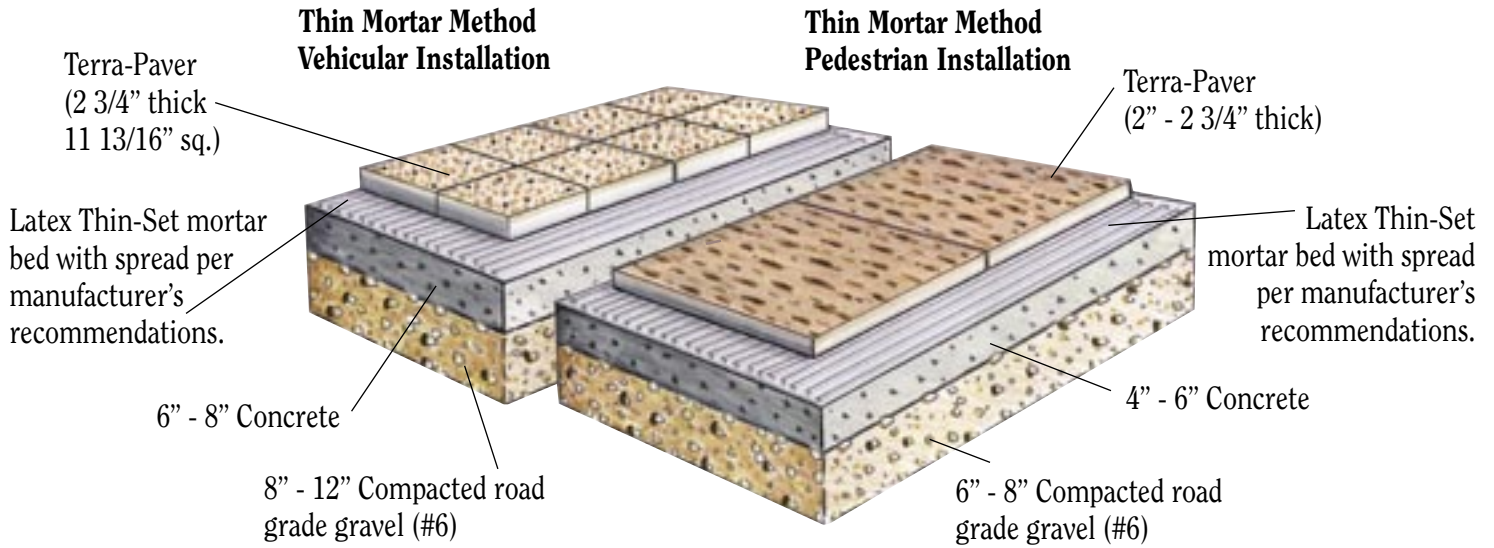


## TYPE 9 Glass Blasted Pavers



Artwalk, Washington DC

# Mortar Set Installation

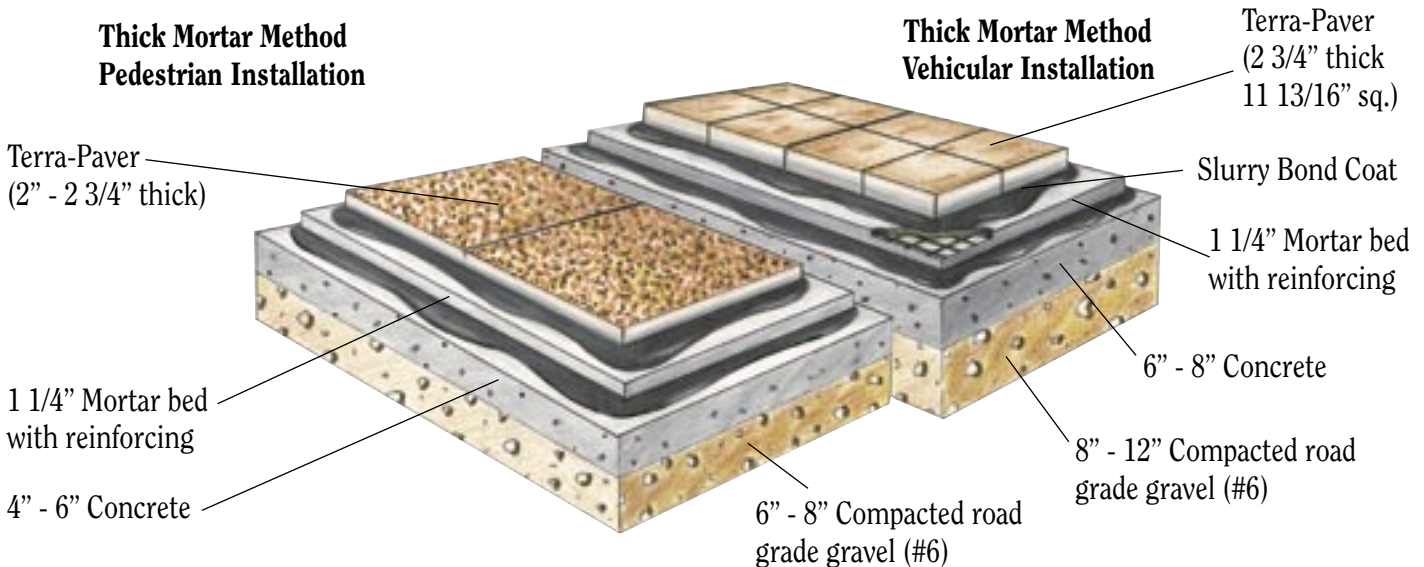


*For vehicle use, select pavers that are 2 3/4" thick x 12" square.*

For projects requiring a grouted look, mortar set installation may be used. Stability of the sub-base and concrete substructure is critical. The joints are grouted and all components (setting bed, grout and mortar) must be used with a latex or acrylic admixture for waterproofing. The use recommendations of the admixture manufacturer must be followed. Perimeter and interior expansion joints must be designed to allow for all movement in the installation.



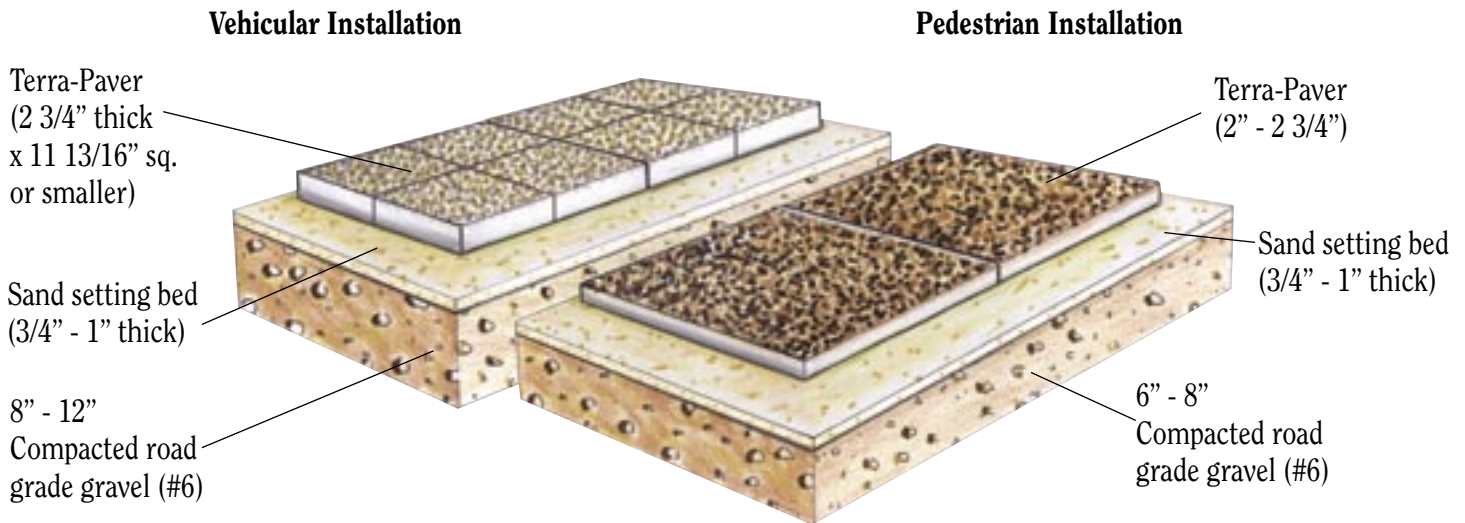
Up to a 5-year bond warranty is available on Terra-Pavers when installed with Wausau Tile's mortar mix.



*For vehicle use, select pavers that are 2 3/4" thick x 12" square.*

\*A 100% bond between Terra-Paver and setting bed is recommended. To achieve this, the "Back Butter" method and a 3/8" x 1/2" notched trowel should be used.

# Sand Set Installation

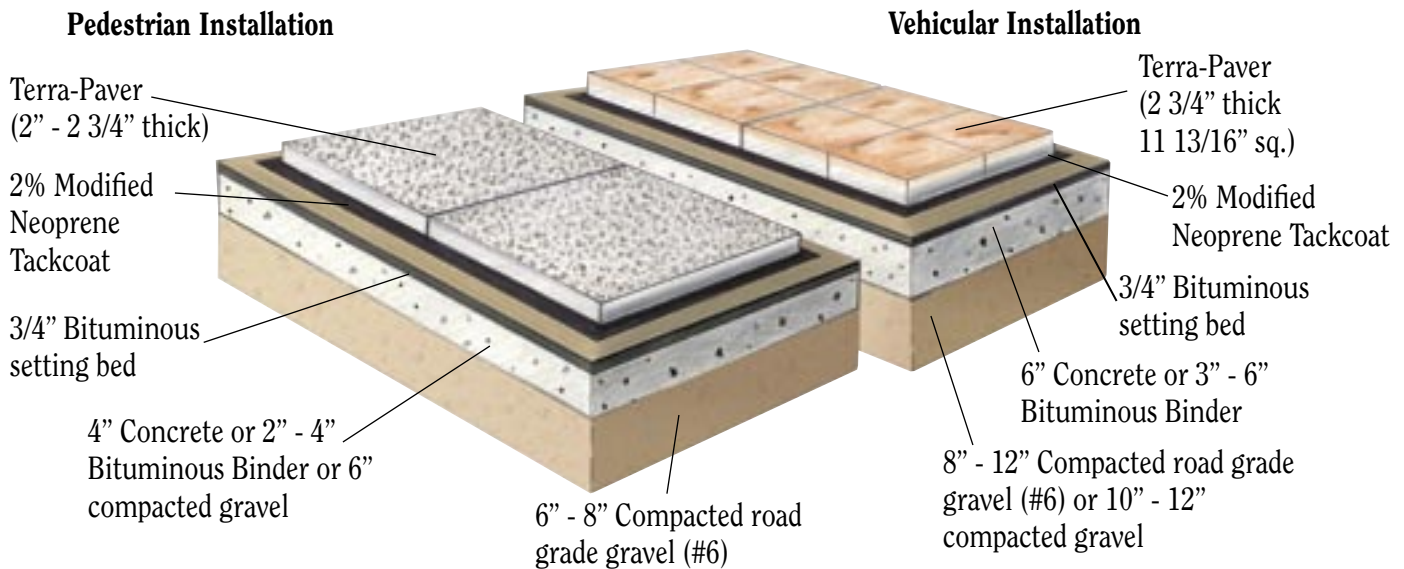


*For vehicle use, select pavers that are 2 3/4" thick x 12" square.*

*When Terra-Pavers are installed on inclines, the use of a filter cloth is recommended to stabilize the sand setting bed.*

In addition to being economical, the sand-set method of installing Terra-Pavers allows easy replacement, repair or adjustment of the pavers. Sand set installation can be utilized with soil conditions that drain well and are stable with no settling. Proper compaction of the sand-setting bed and the road grade gravel sub-bed is critical to prevent settling and moving of the pavers after installation. For stability, the sand bed should not be thicker than 1". Joints should be 1/16" to 1/8" and swept with sand.

# Bituminous Installation



*For vehicle use, select pavers that are 2 3/4" thick x 12" square.*

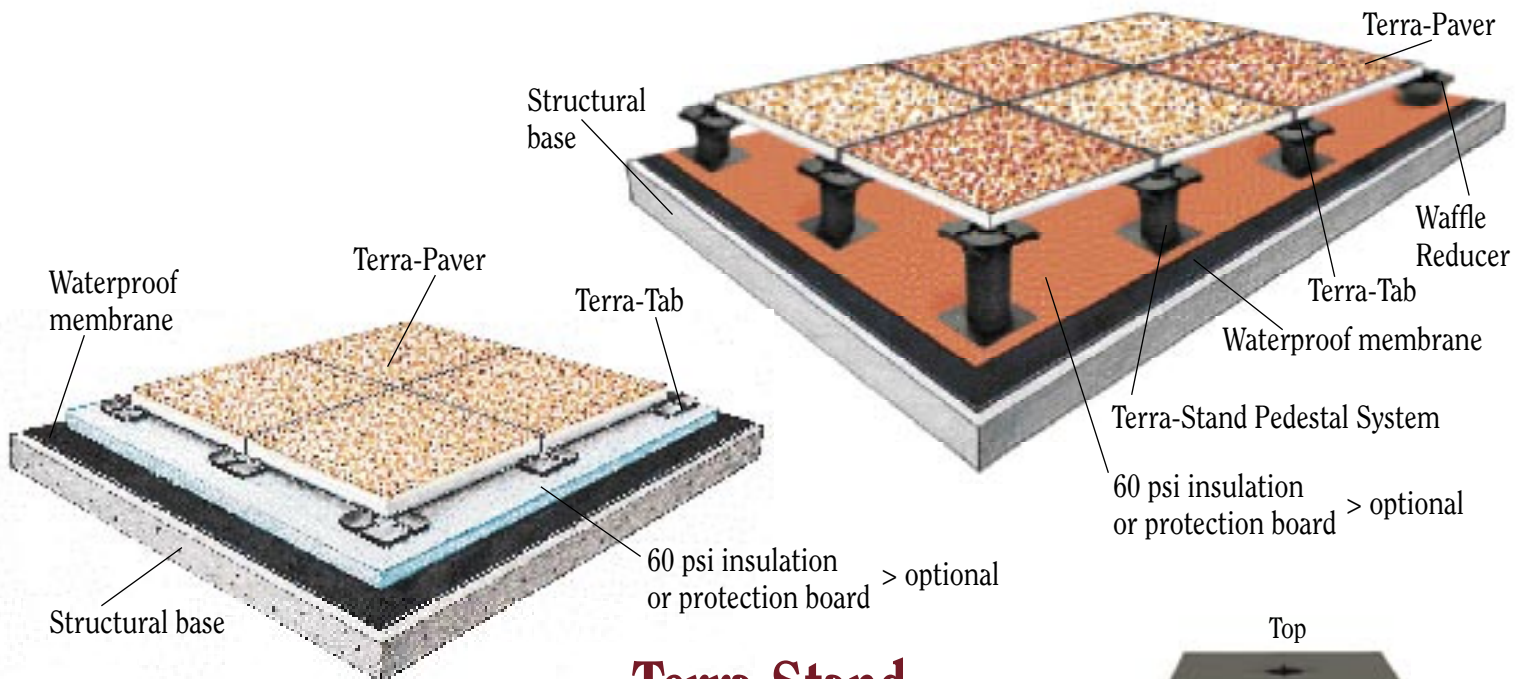
In applications where stability is critical, Terra-Pavers may be installed using the bituminous method over compacted gravel, bituminous or concrete sub-bases. As with the sand-set method, the subgrade must be stabilized to prevent settling. Bituminous setting beds thicker than 3/4" should be applied in multiple layers, each layer not to exceed 3/4" in thickness. Bituminous bed shall be rolled with 12" pavers or smaller only. Do not roll on pavers larger than 12". Installation of the Tackcoat should be done according to the manufacturer's instructions to assure proper bonding and to prevent water from getting underneath the pavers. Joints should be 1/16" to 1/8" and swept with sand.

# Open Joint Installation

## Terra System One Sloped Installation Method

Pedestrian use only

## Terra System One Level Installation Method



## Terra Stand

The Terra-Stand pedestal screws up and down from 2" to 21" in height and compensates for slope up to 5/8" per foot providing a level installation. The Terra-Stand allows for a maximum weight load of 3,000 lbs. per pedestal. Our Waffle-Reducer consists of a base with four rings for height adjustment between 1/2" and 2 1/8".



800.388.8728 / [www.wausautile.com](http://www.wausautile.com)

# Terr-Adjust Pedestal, Terra-Tabs and Terra-Shims

## Rubber tabs and shims

are used on both systems as the contact between paver and pedestal, allowing for expansion joints, proper alignment and minimal sound transmission.

The Terr-Adjust pedestal telescopes from 2" to 5 1/2" in height and slope compensates up to 2" per foot to provide level installation. The reducers and extenders allow for system adjustment from 1/2" to 10" in height. Pedestals are filled on site with pre-blended concrete mix.

The Terra-Tabs and Terra-Shims are used in conjunction with the Reducers, Terr-Adjust and Terra-Stand Systems. If a level deck is not needed, Terra-Tabs can be used alone for quick and easy installation.

Terra-Tabs are available with 1/8" or 3/16" spacing.





*Monona Terrace, WI*

## **Ballast Pavers 24" In stock**

Get more information about our unique way to turn roofs and plazas into functional space with Terra-System One Roof Deck Systems in section 077200/WAU and 077600/WAU of Sweets.



*FDB554*



*FDB654*



*FDB200*



*FDB354*



*FDB454*

## ADA In Stock Textures & Colors



*ADA-1  
12" In Stock*



*ADA-2  
12" & 24" In Stock*



*ADA-3  
12" In Stock*



*Directional Bar  
12"*



*U3008*



*U4008*



*U5008*



*USY7008*



*Tactile Warning  
12"*



*FDX3008*



*FDX4008*



*FDX5008*



*FDXSY7008*



*Federal Yellow  
33538*

See our type 3 FDX series for additional colors.

## Engraved and Impression Pavers



*Our epoxy-filled, engraved concrete pavers provide the cornerstone for your donor recognition project.*





*DiMaggio Plaza, IL*

## Another Great Combination

Wausau Tile's versatile line of pavers complements our distinctive precast concrete creations. From city streets, to national parks, Wausau Tile takes great pride in being part of America's landscape.

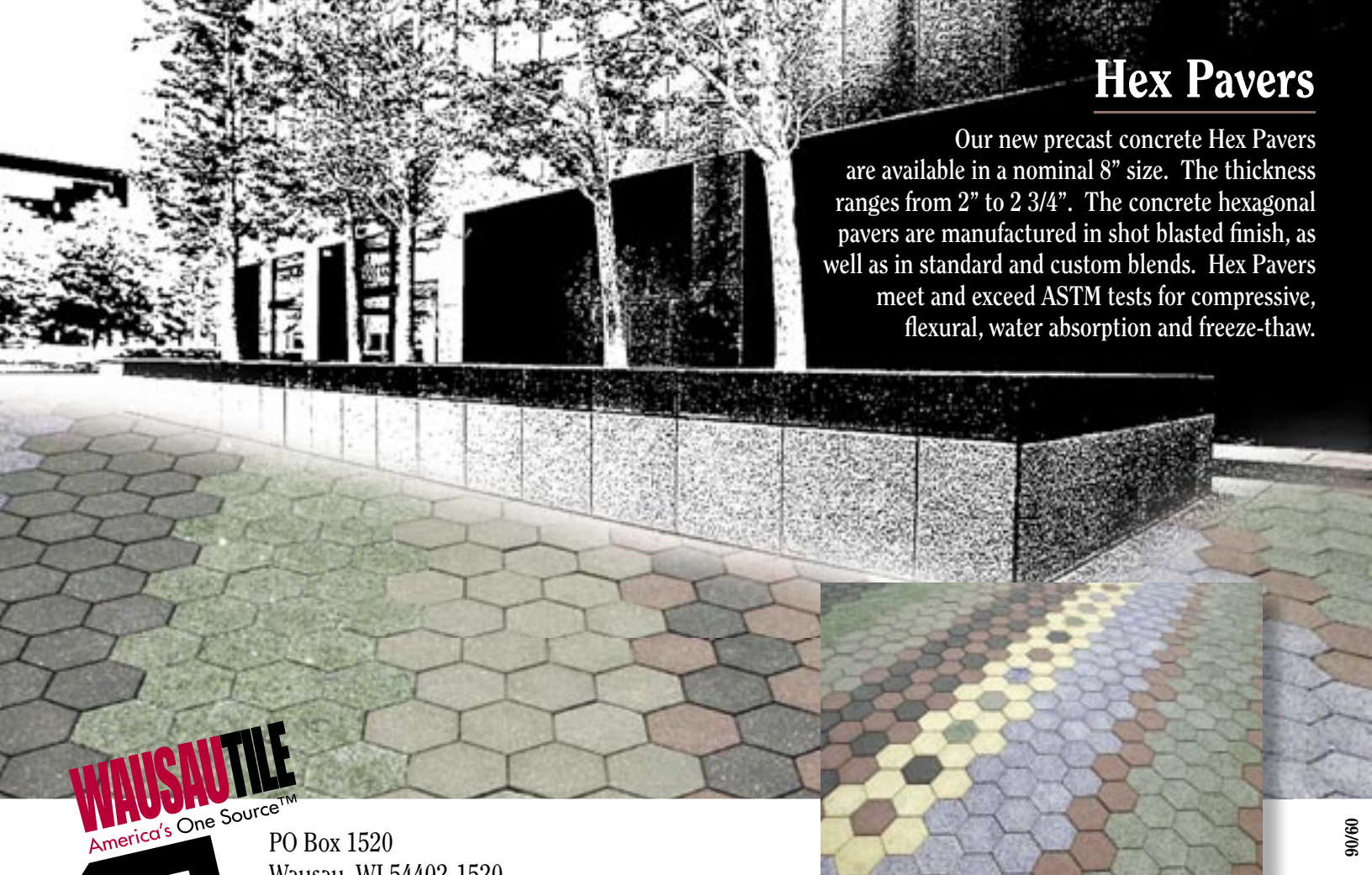
Please visit [www.wausautile.com](http://www.wausautile.com) to view our album of precast concrete creations.



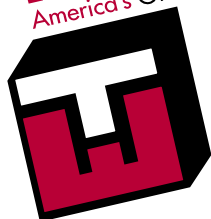
Along with our creativity comes flexibility and dependability. Let us assist you in taking your creations to another level.

# Hex Pavers

Our new precast concrete Hex Pavers are available in a nominal 8" size. The thickness ranges from 2" to 2 3/4". The concrete hexagonal pavers are manufactured in shot blasted finish, as well as in standard and custom blends. Hex Pavers meet and exceed ASTM tests for compressive, flexural, water absorption and freeze-thaw.



**WAUSAUTILE**  
America's One Source™



PO Box 1520  
Wausau, WI 54402-1520  
800.388.8728  
Fax: 715.359.7456  
[www.wausautile.com](http://www.wausautile.com)

© 2006, Wausau Tile, Inc. All photos, text and actual products shown are the sole property of Wausau Tile, Inc., and may not be copied or duplicated without the express written permission of Wausau Tile, Inc.

PRSRT STD  
U.S. POSTAGE

**PAID**

PERMIT 182  
WAUSAU WI