




**NARO**



**nar•o (năř'ō)** *adj.*  
small or slender in width,  
especially compared with  
length <linear fluorescent  
lamp, golf club, fettuccine,  
kate moss>

**don't worry, our design skills  
far exceed our spelling aptitude.**

applications are as broad as naro is slight.  
with over 90% efficiency and 14 feet  
on-center spacing, performance defines  
the niche for naro. to those naysayers out  
there, we knew energy savings could look  
cool, too. naro's minimalist styling flatters  
the understated contemporary space. but  
discreet doesn't mean boring, just follow  
the lines of light that create visual interest.  
want to soften the edges a smidge? we  
have a sculptured end cap for that.

P E E R L E S S®



## specifications

### construction

nominal 4 7/16" w x 2 7/32" h extruded aluminum housing. die-cast aluminum end cap.

### reflectors

die formed semi-specular high reflectance aluminum or white painted steel. select semi-specular (SPR) reflectors when a wide distribution is required for maximum row spacing (e.g., open offices or classrooms). select white (WHR) reflectors for narrow applications (e.g., corridors) to soften side wall shadows.

### shielding

frosted acrylic diffuser.

### finish

white polyester powder painted or satin anodized. satin anodized finish consists of satin anodized housing and end caps painted C110 (aluminum) to match. optional custom colors available, consult factory.

### electrical

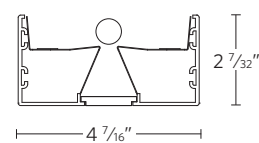
specify 120v, 277v, or 347v. pre-wired with 16awg fixture wires. for special circuiting or wire gauge, consult factory. plug-in electrical connectors included. ul and c-ul listed.

### fixture length

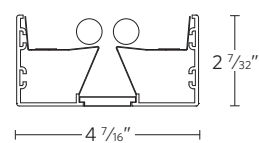
4' and 8' lengths in a single section for suspended support spacing of 4'-0" and 8'-0". for total fixture length add 1/2" for each standard endcap or 4 1/2" for each sculptured endcap. using internal joiners, 4', 8', and 12' (wall only) sections can be joined to form longer rows.

## dimensions / lamping

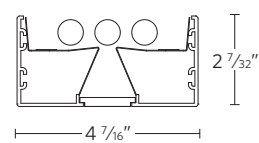
### NRM9 - 1



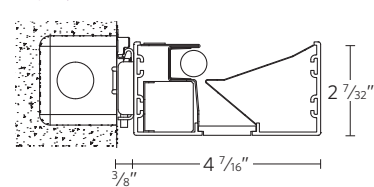
### NRM9 - 2



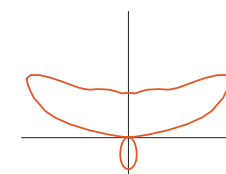
### NRM9 - 3



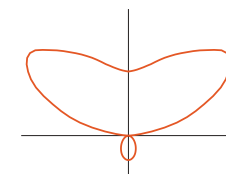
### NRW9 - 1



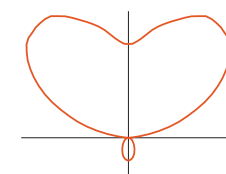
## performance



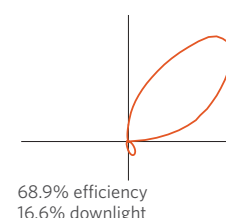
91.6% efficiency  
15.4% downlight



90.6% efficiency  
10.9% downlight



90.2% efficiency  
8.2% downlight



68.9% efficiency  
16.6% downlight



## suspended ordering logic

Use guide below to order complete fixture runs from four feet to three-hundred feet in increments of four or eight foot units.

Sample Catalog No.: NRM9 2 28T5 SPR FST 40FT R8 277 GEB10 DCT LP835 F1/18 C100

Fixture	# of Lamps in Cross Section	Lamp Type	Reflector	Shielding	FT		Voltage	Ballast Type	# of Emergency Modules <sup>4,5</sup>	Emergency Type <sup>4</sup>	Switching	Lamp Color	Mounting Type /		Overall Suspension	Finish	Options
					Nominal Row Length <sup>1</sup>	Maximum Section Length							F1	F2			
NRM9	1 2 3	54T5HO 28T5	SPR Specular Reflector WHR White Reflector	FST Frosted Diffuser	___FT	R4 4' Section R8 8' Section	120 277 347	GEB10 <10% THD ELECTRONIC  Dimming Ballasts Available: ADEZ <sup>2,3</sup> Advance Mark 10 ECO10 <sup>2</sup> Lutron ECO-10 ADZT <sup>2,3</sup> Mark 7 (0-10 Volt) OSDIM <sup>2,3</sup> Osram 0-10V dim S5 <sup>2</sup> SIMPLY5™  Reference <a href="#">Ballast Chart</a> on website or consult factory for other options.	(Blank) None 1SE 2SE XSE	(Blank) None EL Emergency Battery Pack EC Emergency Circuit EN Emergency Battery Pack w/ Night Light	SCT Single Circuit DCT Dual Circuit	L/LP No Lamp LP830 3000K 80+ CRI LP835 3500K 80+ CRI LP841 4100K 80+ CRI  T5 Only: LP830P 3000K 80+ CRI Premier LP835P 3500K 80+ CRI Premier LP841P 4100K 80+ CRI Premier  Reference <a href="#">Lamp Chart</a> on website or consult factory for other options.	F1 T-Bar Ceiling (Universal Mounting Bracket) F1A T-Bar Ceiling (UMB with Integrated J-Box) F2 Hard ceiling horizontal J-box Rigid Stem F3 IDS Clip 1/8" Tee F4A IDS Clip 3/16" Tee F4B IDS Clip 1/4" Tee F4C IDS Clip Screw Slot	12 12" overall suspension 15 15" overall suspension 18 18" overall suspension 21 21" overall suspension 24 24" overall suspension XX XX" overall suspension	C100 Satin Anodized Finish C041 White White (low gloss) C099 Custom Finish	ACG Adjustable Cable Grippers CP Chicago Plenum DL Damp Location Label DPC <sup>6</sup> Daylight Photocell DU <sup>7</sup> Dust Cover ELH EM Through Wire Harness ELS EM Through Wire Harness with Single Feed ELS2 Normal Feed w/ EM Separate Neutral GLR Fast Blow Fuse GMF Slow Blow Fuse MCS Matching Feed Canopy at Support NYC New York City Code OBJ Offset Junction Box SCEP Sculptured Endcap	

**Notes:**

- Must be in 4' increments.
- Not available in 347 volt.
- Not available with 28T5 Lamp Type.
- Optional.
- Emergency type is installed in last 4' of fixture sections. Separate feed required unless ELS or ELS2 is specified.
- Photocell installed 6" from the end of last fixture section in row. Consult factory for alternative
- and/or additional locations. DPC must be used w/ 0-10V dimming ballast.
- Not available with 3 lamp cross section

## wall ordering logic

Use guide below to order complete fixture runs from four feet to three-hundred feet in increments of four or eight foot units.

Sample Catalog No.: NRW9 2 54T5HO FST 32FT R8 120 GEB10 SCT LP835 C041 SCEP

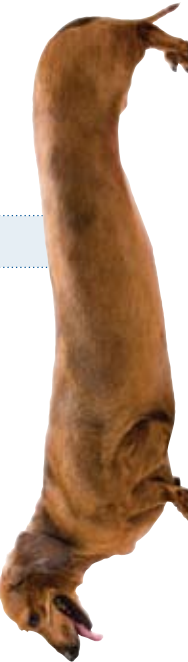
Fixture	# of Lamps in Cross Section	Lamp Type	Reflector	Shielding	FT		Voltage	Ballast Type	# of Emergency Modules <sup>4,5</sup>	Emergency Type <sup>4</sup>	Switching	Lamp Color	Finish	Options
					Nominal Row Length <sup>1</sup>	Maximum Section Length								
NRW9	1	54T5HO 28T5	WHR White Reflector	FST Frosted Diffuser	___FT	R4 4' Section R8 8' Section R12 12' Section	120 277 347	GEB10 <10% THD ELECTRONIC  Dimming Ballasts Available: ADEZ <sup>2,3</sup> Advance Mark 10 ECO10 <sup>2</sup> Lutron ECO-10 ADZT <sup>2,3</sup> Mark 7 (0-10 Volt) OSDIM <sup>2,3</sup> Osram 0-10V dim S5 <sup>2</sup> SIMPLY5™  Reference <a href="#">Ballast Chart</a> on website or consult factory for other options.	(Blank) None 1SE 2SE XSE	(Blank) None EL Emergency Battery Pack EC Emergency Circuit EN Emergency Battery Pack w/Night Light	SCT Single Circuit	L/LP No Lamp LP830 3000K 80+ CRI LP835 3500K 80+ CRI LP841 4100K 80+ CRI  T5 Only: LP830P 3000K 80+ CRI Premier LP835P 3500K 80+ CRI Premier LP841P 4100K 80+ CRI Premier  Reference <a href="#">Lamp Chart</a> on website or consult factory for other options.	C100 Satin Anodized Finish C041 White White (low gloss) C099 Custom Finish	DL Damp Location Label DU Dust Cover ELH EM Through Wire Harness ELS EM Through Wire Harness with Single Feed ELS2 Normal Feed w/ EM Separate Neutral GLR Fast Blow Fuse GMF Slow Blow Fuse NYC New York City Code SCEP Sculptured End Cap

**Notes:**

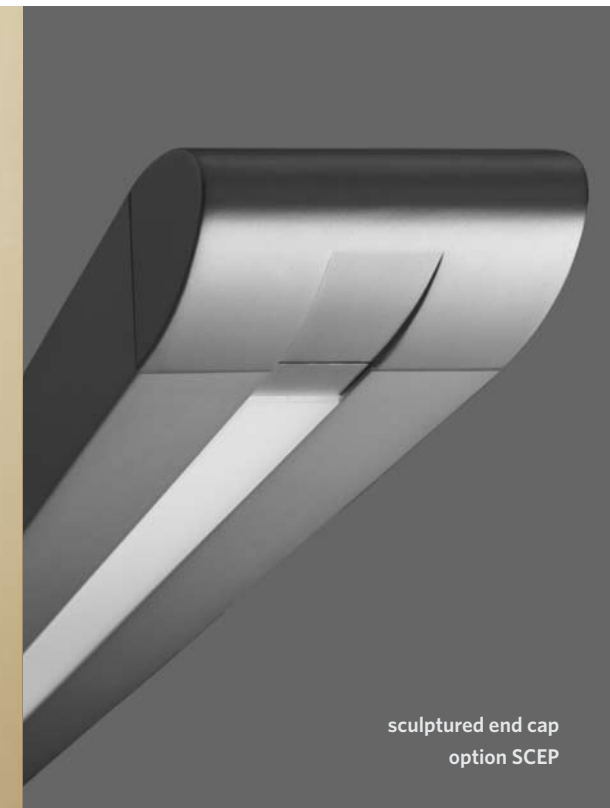
- Must be in 4' increments.
- Not available in 347 volt.
- Not available with 28T5 Lamp Type.
- Optional.
- Emergency type is installed in last 4' of fixture sections. Separate feed required unless ELS or ELS2 is specified.

© 2010 Acuity Brands Lighting, Inc. All Rights Reserved. "Peerless" is a registered trademark. Products in this brochure may be covered by one or more U.S. Patents and Patents Pending. Peerless Lighting reserves the right to change materials or modify the design of its product without notification as part of the company's continuing product improvement program.

PEERLESS  
An Acuity Brands Company



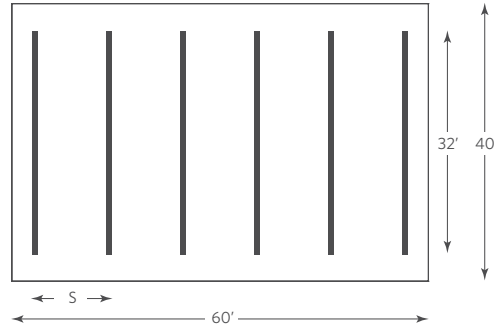
daylight photocell option DPC



sculptured end cap option SCEP

## open office applications

calculations based on:

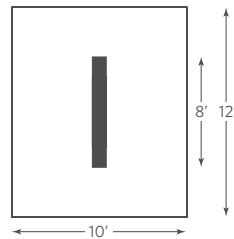


calculation notes:  
 80/50/20 ceiling/walls/floor reflectance  
 .79 LLF (light loss factor) includes:  
 .95 LLD (lamp lumen depreciation)  
 .88 LDD (luminaire dirt depreciation)  
 .94 RSD (room surface dirt depreciation)  
 1.0 BF (ballast factor)  
 T5: 2900 lumen lamps, 30 input watts  
 T5HO: 5000 lumen lamps, 62 input watts

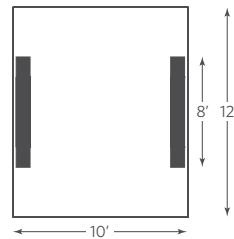
	lamping	ceiling height	overall suspension	spacing (s)	number of 32' rows	2.5' work plane ave illuminance	ceiling uniformity (max:min)	power density (w/sf)
suspended	(1) T5	10'	18"	10'	6	35	3.6:1	0.60
	(2) T5	10'	21"	14'	4	47	10.2:1	0.80
	(2) T5	12'	24"	14'	4	43	7.9:1	0.80
	(3) T5	14'	36"	20'	3	44	10.3:1	0.90
	(1) T5HO	10'	18"	14'	4	41	7.5:1	0.83
	(1) T5HO	10'	21"	14'	4	41	5.4:1	0.83
	(1) T5HO	12'	24"	14'	4	38	3.9:1	0.83
	(2) T5HO	14'	36"	20'	3	52	6.4:1	1.24

## private office or conference room applications

calculations based on:



calculations based on:



see calculation notes above.

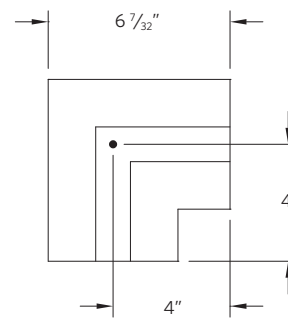
	lamping	ceiling height	overall suspension	no. of 8ft luminaires	average illuminance	maximum illuminance	uniformity (max:min)	power density (w/sf)
suspended	(2) T5	10'	18"	1	28	35	1.6:1	1.00
	(3) T5	10'	18"	1	42	51	1.5:1	1.50
	(1) T5HO	10'	18"	1	25	36	2.0:1	1.03
	(2) T5HO	10'	18"	1	49	60	1.6:1	2.07
	(2) T5HO	12'	24"	1	36	46	1.5:1	2.07
wall	(1) T5HO	10'	18"	2	33	38	1.4:1	2.07

2.5' work plane

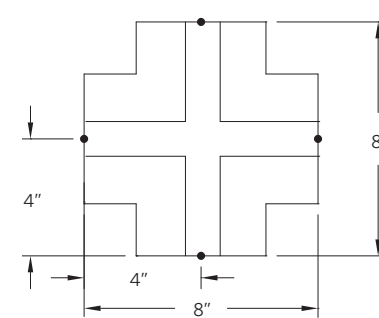
need help with a specific application?  
 contact peerless tech support: 510.845.2760 or [techsupport@peerless-lighting.com](mailto:techsupport@peerless-lighting.com)

put your imagination to work. create statement installations with x, t and corner pattern connectors or craft your own funky twist on a design with custom connectors (feel free to put our team of engineers to work).

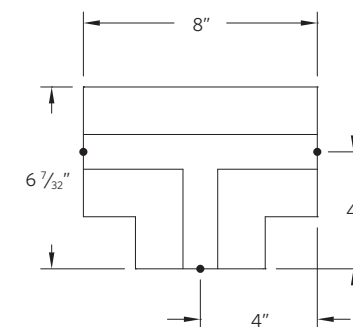
corner connector  
 NRM CNR (suspended)  
 NRW CNR (wall)



x connector  
 NRM CNRX



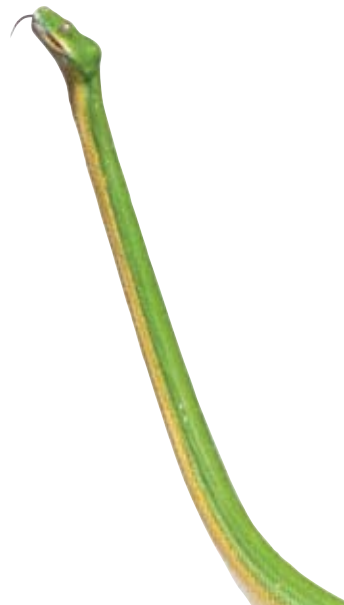
t connector  
 NRM CNRT

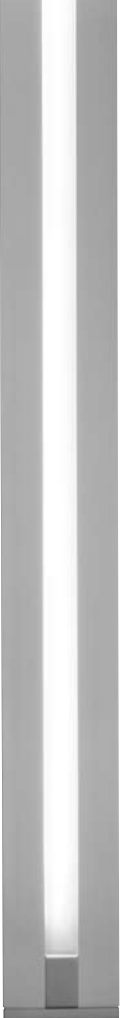


construction:  
 extruded aluminum with 14 gauge sheet metal joiner.

note:  
 special configurations (connectors) available, consult factory to make your vision a reality.

key:  
 ● support or feed location





# P E E R L E S S ®

PEERLESS LIGHTING • 2246 5th St., Berkeley, CA 94710 • Tel: 510.845.2760 • Fax: 510.845.2776 • [www.peerless-lighting.com](http://www.peerless-lighting.com)

