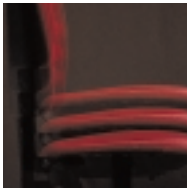


# ALPHA

Premier Ergonomic Seating



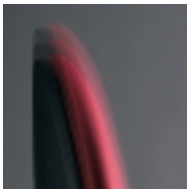
**SITMATIC**®



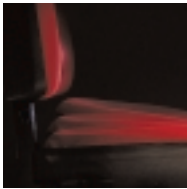
Seat height



Backrest angle



Backrest height



Seat angle



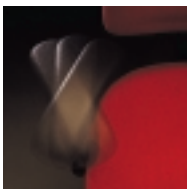
Seat depth



Armrest height



Armrest width



Armrest angle

With its extraordinary range of adjustments and options, Alpha seating enables users of all sizes to achieve the correct ergonomic relationship to their keyboard.



Alpha, a full family of highly refined seating, designed to exceed a corporation's most rigorous standards.



Super Alpha, with the relaxing rocking of the SynchroExec control and the neck support of the adjustable headrest, is ideal for management level applications.



The SingleTouch control adjusts seat and backrest angles independently for total comfort throughout the workday.

Key features distinguishing the Alpha chair from all others:

- Soft urethane clad steel base, that protects footwear.
- Deep underseat shell to shroud mechanisms.
- Edge guard to protect fabric.
- Contour molded foam for support.
- Dual density, extended lumbar support.
- QuickBack backrest height adjustment.



PostureBack™ control

The PostureBack control features a free floating, tension adjustable, rocking backrest that can be locked into eight different positions. The "anti-slap" function does not allow the backrest to be inadvertently released.



SingleTouch™ control

The SingleTouch provides independent adjustment of the seat and backrest angles in one convenient lever. A good choice for dedicated task work.



SynchroExec™ control

The SynchroExec chair will rock in a synchronized free-float mode. The chair is lockable in any position and tension is adjustable for user weight. The backrest angle adjusts independently and features "anti-slap".



Intuitive QuickBack™

QuickBack allows you to move the backrest through an unprecedented 4" range in 11 increments. Fingertip control positions the lumbar bolster exactly where you need it. The visible lever encourages adjustment.



Seat protection

The soft seat edging extends the life of your fabric by protecting it against contact with adjacent furniture.



Cast seat cushions

Molded foam cushions are used rather than cut foam to ensure seating comfort. Upholstery contours are retained during the life of the chair. Your chair lasts longer and feels better.



Strong steel core base

Our safe steel bases are shatter-proof and will withstand decades of use and abuse.



ShoeSaver™ base

Hard plastic and bare metal can damage expensive shoes. This soft rubbery cap gives on contact and yet is impervious to scratching and marring. It also provides excellent traction when the base is used as a foot perch.



### Guest Seating

162 BB  
Alpha guest



### Task Seating

161 PB  
Alpha mid back with PostureBack control



161 ST +1A  
Alpha mid back with SingleTouch control and height and width adjustable arms



### Task Seating

163 ST +1A  
Alpha tall back with SingleTouch control and height and width adjustable arms



### Management Seating

163 SX SS ES +1A  
Alpha high back with SynchroExec control, sliding seat depth adjustment, extended width seat, height and width adjustable arms



173 SX +1A  
Super Alpha with SynchroExec control, and height and width adjustable arms



### Executive Seating

173 SX HR UB +2A UA  
Super Alpha with SynchroExec control, headrest, upholstered backrest shell, height, width and angle adjustable armrests, upholstered arm caps



### High Task Seating

165 ST  
Alpha medium stool with SingleTouch control



166 PB  
Alpha art stool with PostureBack control

## Basic Chair Models

Includes black frame and standard casters



160  
Alpha low back



162 BB  
Alpha guest



173  
Super Alpha high back



165  
Alpha medium stool  
Includes footring



167  
Alpha piano stool  
Includes footring



161  
Alpha mid back



163  
Alpha high back



164  
Alpha tall stool  
Includes footring



166  
Alpha art stool  
Includes footbar

## Special Function Options

Select a control and as many options as required.



Posture Back control,  
rocking back;  
Add suffix PB



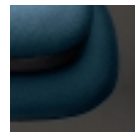
SingleTouch control,  
seat & back angle;  
Add suffix ST



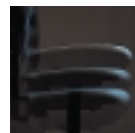
SynchroExec control,  
adds rocking motion,  
seat & back angle;  
Add suffix SX



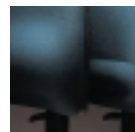
Sliding seat, extends  
2-5/8" for users with  
long legs;  
Add suffix SS



Extended seat width,  
extra 1-1/2";  
Add suffix ES  
(standard on 173)



Extended seat height,  
extra 2" range to  
160,161,163 or 173;  
Add suffix XC



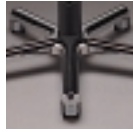
Air lumbar bolster;  
Add suffix AL



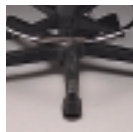
Upholstered backrest  
shell, (not available  
in vinyl or leather);  
Add suffix UB



Adjustable headrest,  
Model 173 only;  
Add suffix HR



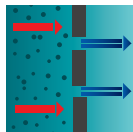
Aluminum base;  
Add suffix AB  
Chrome base;  
Add suffix CB



Footring for models  
160, 161, 163, 173;  
Add suffix FR



Electro Static  
Dissipative;  
Add suffix AN



Cleanroom Class 1;  
Add suffix CR



California Fire Code,  
Technical Bulletin 133;  
Add suffix CF

Alpha seating has  
passed the stringent  
testing procedures  
established by;  
ANSI/BIFMA & ANSI/  
HFES and CAL 117.

Sitmatic seating is  
covered by our  
comprehensive lifetime  
structural warranty.  
Call for complete  
details.

Specifications are  
subject to change  
without notice.

## Caster Options



Braking safety  
caster, locks when  
unoccupied;  
Add suffix BC



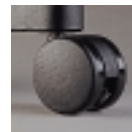
Parquet floor caster,  
soft tread for wood  
or vinyl flooring;  
Add suffix PC



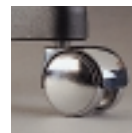
Braking parquet  
safety caster;  
Add suffix BP



Glides;  
Add suffix GL



60mm casters, for  
enhanced mobility;  
Add suffix 6C



Zinc Casters, 400+  
lbs. users or rough  
floors;  
Add suffix ZC

## Armrest Options



Hoop armrests;  
Add suffix +1



Reversible cantilever  
armrests;  
Add suffix +5



Fixed height, adjustable  
width "T" armrests;  
Add suffix +1T



Adjustable height &  
width "T" armrests;  
Add suffix +1A



Adjustable height, width,  
& angle armrests;  
Add suffix +2A



Adjustable height, width,  
& angle armrests with  
wide Data caps;  
Add suffix +2D



Upholstered armrest caps;  
Add suffix UA



Comma wrist support, for  
+2A arm only;  
Add suffix UC

## How to specify:

Start with the model number of the basic chair in the first column (includes black frame and standard casters). Order a control and desired options by adding the suffix codes to the model number.

To complete the order, specify your choice of fabric from over 180 standard Sitmatic fabrics or specify your own material (COM).

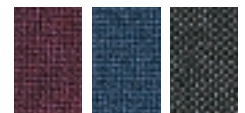
The chair below is just one example of the hundreds of possibilities.



Example of how to specify:  
163 SX SS ES +2A

163- Alpha tall back  
SX- SynchroExec control  
SS- Sliding seat  
ES- Extended seat width  
+2A- Adjustable height,  
width & angle armrests

## Popular fabric choices



2182 Amethyst    2124 Sapphire    2216 Charcoal

For further information on our entire range of task, management, guest and public seating, please call our toll free number.

Sitmatic  
9545 Brasher Street  
Pico Rivera  
California, 90660

Tel. 800.288.1492  
562.699.1002

Fax 562.699.0998

E-Mail [Info@Sitmatic.com](mailto:Info@Sitmatic.com)

Website [www.sitmatic.com](http://www.sitmatic.com)

