

ANTALIA 43" CONSOLE LAVATORY, MODEL 30048

- Classic design with spacious deck area
- Fire clay construction
- Available in White only
- With rear overflow
- Includes two lacquered wooden legs
- Includes wall mounting bracket system #33040
- Faucet hole centers (1-3/8" dia.) listed below:

- ❑ **30048** Lavatory slab with 1-3/8" dia. holes on 8" (203mm) centers (for spread lavatory faucet only)
- ❑ **30140** Wall mounting cradle, two lacquered wooden legs, and mounting hardware

Nominal Dimensions:

43-1/8" x 22-5/8" x 33-3/4" (1095 x 575 x 857mm)

Bowl Inside Dimensions:

21-3/8" (543mm) wide

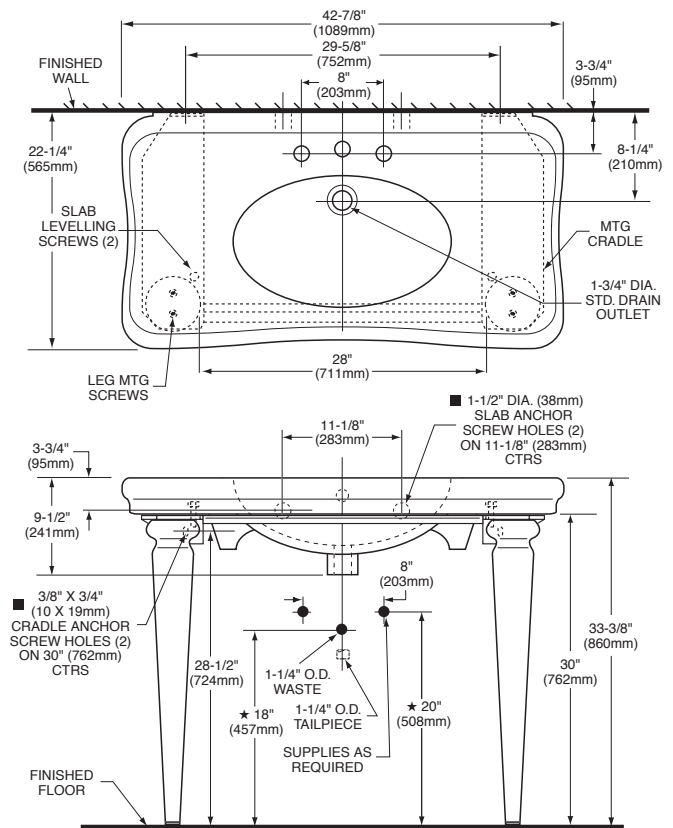
13" (330mm) front to back

6-1/2" (165mm) depth

Fixture Dimensions conform to ANSI Standard A112.19.9M

To Be Specified

- ❑ Faucet:
- ❑ Faucet Finish:
- ❑ Supplies:
- ❑ 1-1/4" Trap:
- ❑ Nipple:



NOTES:

- ★ DIMENSIONS SHOWN FOR LOCATION OF SUPPLIES AND "P" TRAP ARE SUGGESTED.
- FOR REINFORCEMENT ONLY. TAKE ACTUAL DIMENSIONS FROM FIXTURE. PROVIDE SUITABLE REINFORCEMENT FOR ALL WALL SUPPORTS. FITTINGS NOT INCLUDED AND MUST BE ORDERED SEPARATELY. INSTALLATION INSTRUCTIONS SUPPLIED WITH LAVATORY.

IMPORTANT: Dimensions of fixtures are nominal and may vary within the range of tolerances established by ANSI Standard A112.19.9M. These measurements are subject to change or cancellation. No responsibility is assumed for use of superseded or voided pages.