



Elevation



Goes Great with Work.



An architectural combination of forms accented with an array of modern colors



Pearwood & Black
Ebony Pulls
EEPWE721LB
EPW485
EEPWE733R
EEPWE737
751

Full Pedestals provide the structural support of Elevation's floating top design and feature standard box/box/file drawer configuration. Optional file/file drawers available at an upcharge.

Raised Pedestals. All pedestals feature 3.5" high x 2.5" diameter steel legs with black powdercoat finish, lifting the unit above the floor for both design and function.

Open Pedestals. Left/right desks and credenzas feature an open storage pedestal in the connection corner, providing extra concealed storage for CPUs, gym bags, handbags, etc. Includes grommet in bottom and side.

Creative Colorways. Specify pedestal color to match, complement or contrast the color of worksurfaces, modesty panels and drawer fronts. Color combinations can vary between facilities, departments, even individual offices. Laminate and pull colors (shown on back cover) coordinate with Atlas, Hyperwork, Agility and Uniwork series.



Legs feature 1" leveling adjustment, allowing quick and easy raising/lowering of unit.



Elevation worksurfaces (1" thick shown) feature durable thermally fused laminate and AdvantEdge 3mm PVC edges.

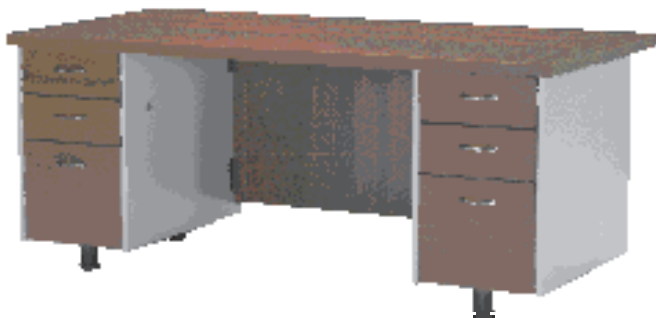
Windsor Cherry & Grey
Chrome Pulls
E2WWCG720
E2WWCG704
E2WWCG737F
1231



Elevation combines architectural appearance and pedestal-based structure for unique design and value. Floating worksurface design enhances appearance as well as function. All 72" x 36" desks feature 8" overhang on approach side for conferencing capability. Worksurfaces available 1" or 1.5" thick with smooth, soft roll edges made of heavy-duty, 3mm PVC AdvantEdge for long term durability. Overhead storage units are available with flip-up or side opening doors. New flip-up doors open upward and recede inside the cabinet, freeing vertical space and the top of the overhead unit.



Select 1.5" thick tops (E2) in Windsor Cherry, Aspen or Natural Maple laminates for enhanced executive appearance.



All pedestals include locking and smooth-operation, captive ball-bearing drawer slides. Pre-installed filing hardware features fixed side rails and adjustable, snap-in-place cross members for easy user adjustment.

Be Creative! For design flexibility, pedestal color can match, complement or contrast the color of worksurfaces, modesty panels and drawer fronts. Additionally, Elevation shares key materials and color options with Atlas, Hyperwork, Agility and Uniwork for integrating multiple series.

Materials include:

- Durable thermally fused laminate surfaces
- Damage-resistant AdvantEdge 3mm PVC edges with soft roll design
- Sleek, curvilinear drawer/door pulls made of solid metal

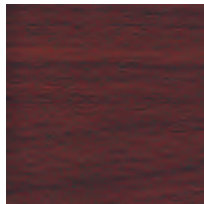
Core Colors



Aspen **AP**



Natural Maple **FM**



Mahogany **M**



Medium Oak **O**



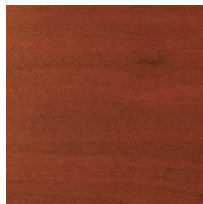
Espresso **X**



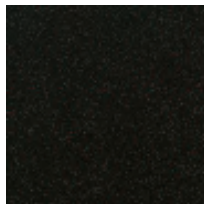
Classic Cherry **CC**



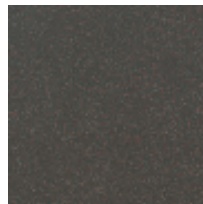
Pearwood **PW**



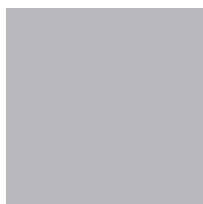
Windsor Cherry **WC**



Black **E**



Graphite **GP**

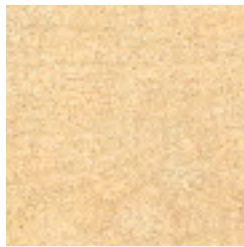


Grey **G**

1.5" Tops



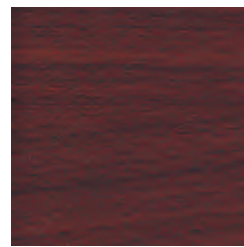
Windsor Cherry **WC**



Natural Maple **FM**



Aspen **AP**



Mahogany **M**



Chrome **W**



Ebony **E**



Bright Brass **B**



Oval Nickel **D**

042909Elevation

