

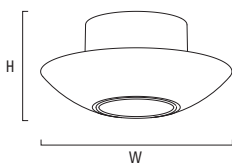
SAMPLE CATALOG NUMBER

CM1470 - 1FCS40-1TF42(MVOLT) - BA - XPS
 Model Number Lamping Option (Voltage) Bowl Finish Option

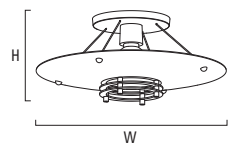
Model				Lamping Options	Finish	Options
Model Number	Dimensions					
DUET CM1470	W	17-7/8"	(454 mm)	※1FCS40-1TF42 1FCS40-1N75PAR30	PTD BA BCA SNA	DCC XPS
PATERA CM1480	W	15"	(381 mm)	1N75PAR30 1H39PAR20	PTD CB BA PB BB SNA BCA VG BU	DCC

LINE DRAWINGS

DUET
CM1470



PATERA
CM1480



ABBREVIATION KEY

※ Configuration operates TF26 or TF32 lamp options and can be labeled up to the highest wattage allowed

Dimensions

W Width
H Height

Lamping Options (Voltage)

- ※TF26 26w triple, 4-pin GX24q-3 base, FLR (MVOLT; 347V)
- ※TF32 32w triple, 4-pin GX24q-3 base, FLR (MVOLT; 347V)
- ※TF42 42w triple, 4-pin GX24q-4 base, FLR (MVOLT; 347V)
- FCS40 40w T-5, circular, 2GX13 base, FLR (MVOLT; 347V)
- N75PAR30 75w PAR30, medium base, INC (120V)
- H39PAR20 39w PAR20, medium base, MH (MTAP)

Specify Voltage, MVOLT or MTAP
 MVOLT is a ballast that operates 120V through 277V
 MTAP is a ballast that operates 120V or 277V

Finishes (see inside back cover)

- PTD Painted - specify color code (ex. BRNZ for Bronze)
- BA Brushed Aluminum
- BB Brushed Brass
- BCA Brushed Chrome Alternative
- BU Brushed Copper
- CB Polished Chrome
- PB Polished Brass
- SNA Satin Nickel Alternative
- VG Verdigris Patina over Copper

Options

- DCC Damp clear coat required for all metal finishes in damp locations
- XPS Express 10 day shipment

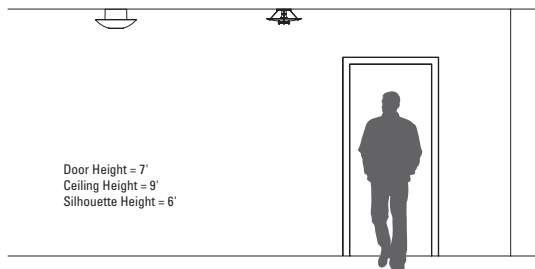
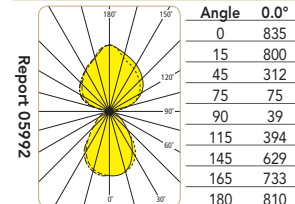
PHOTOMETRICS and BIM

Complete BIM (Building Information Modeling) and photometric files for these models may be downloaded from www.visalighting.com

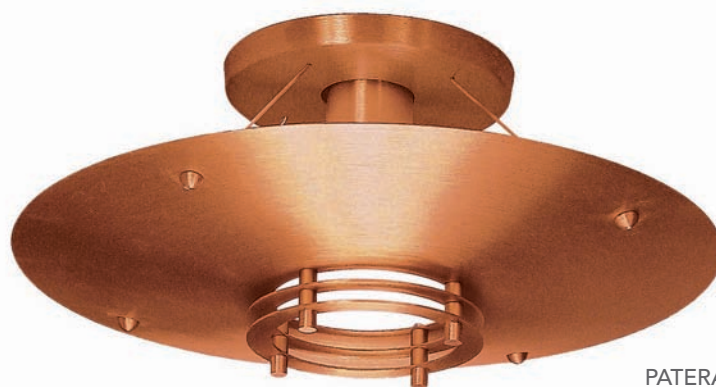
Reports

IES File Number LER Report page
 CM1470-1FCS40-1TF42 49 05992 412
 See report on indicated page for complete detail

Candela Distribution



DUET™ & PATERA™



PATERA
CM1480-BU



DUET
CM1470-BA

COMPANION



DUET

FEATURES

- 5 year product warranty
- Heavy gauge spun metal housing
- Oven cured no VOC acrylic powder coat for painted finishes; oven cured low VOC clear coat on metal finishes
- Fluorescent or incandescent downlight options
- High power factor electronic ballast (fluorescent lampholder)
- Surface mounts to standard octagonal junction box (by others) with provided hardware
- Wired for dual circuit operation (uplight/downlight)



SUGGESTED VARIATIONS

- Specialty finishes to match architectural detail
- Alternate lampholder up to rated wattage listed
- Add remote emergency battery pack for fluorescent downlight
- Fused circuit protection

PATERA

FEATURES

- 5 year product warranty
- Compact scale
- Heavy gauge spun metal dish with solid metal trim rings
- Fixture available in various finishes
- Dish suspended by (4) 1/16" stainless steel wire forms
- Oven cured no VOC acrylic powder coat for painted finishes; oven cured low VOC clear coat on metal finishes
- Easy tool-less relamping
- Incandescent and HID lampholder
- Mounts to standard electrical junction box (by others) with provided hardware



SUGGESTED VARIATIONS

- Specialty finishes to match architectural detail
- Increase wire length to increase dish suspension distance
- Sloped ceiling adapter
- Can be constructed of non-ferrous materials for use in magnetic resonance imaging (MRI) rooms
- Fused circuit protection