

# 8201 Wood Occasional Chair

Model	Description	Overall Dimensions						Specific Dimensions													
		Width		Depth		Height		Back Height		Seat Height		Back Width		Seat Depth		Seat Width		Weight		Volume Reg./K.D.	
		(in.)	(mm.)	(in.)	(mm.)	(in.)	(mm.)	(in.)	(mm.)	(in.)	(mm.)	(in.)	(mm.)	(in.)	(in.)	(in.)	(mm.)	(lbs.)	(kg.)	(cu.ft.)	(cu.mt.)
8201	Guest-Wood Armchair	23	584	24 1/2	622	33 1/2	580	15 1/2	394	19	482	18	457	17 1/2	444	20	508	24	11	12.5	0.35

## Standard Features •

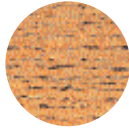
- Solid hardwood frame with hand crafted detail. See chart below for available wood finish.
- High density seat and back foam for comfort and durability.
- California fire code #117
- Floor glides for ease of movement.
- ANSI/BIFMA.

## Options - ○

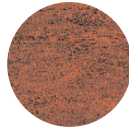
Model	Description	Misc.
	To specify any option(s) simply add the suffix(s) to the model number. (ie) 8201-ME	Wood Finish ○
8201	Guest-Wood Armchair	

## Option - Wood Finish

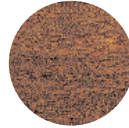
Please allow 4 weeks lead-time for delivery of wood finishes.



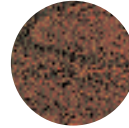
ME-Oak



CY-Cherry



WL-Walnut



MH-Mahogany

### Note:

All wood is hand finished and quality crafted to order.



Under the Nightingale Inc. warranty all claims must be made within the time period as specified.

Nightingale Inc. offers a Lifetime Limited Warranty, **unless otherwise specified**, from date of purchase by original purchaser, on all non-moving metal components. Nightingale Inc. also warrants that self-skinned urethane parts, plastic shells, casters, wood parts and mechanisms will carry a (5) five year warranty. Upholsteries will carry a (2) two year warranty. Pneumatic cylinders will carry a (10) ten year warranty.

The Nightingale Inc. warranty is based on normal use of eight (8) hours a day, five (5) days per week by individuals of 250 lbs. or less.

Nightingale Inc. reserves the exclusive and sole right to repair, correct or replace at our option, any Nightingale Inc. seating product which upon our inspection is declared defective in material or workmanship.

The Limited Lifetime Warranty does not apply to Nightingale Inc. products that are used for rental purposes and is effective only for products, parts or components manufactured after January 1, 1999.

The Lifetime Limited Warranty applies only to customers in Canada and the United States.

The Nightingale Inc. warranty does not apply to damage caused by accident, abuse, negligence, abnormal use or use with extreme climatic conditions. Normal climatic condition is defined as the temperature and moisture content range for human comfort and health. Due to the inherent nature of certain material used, all furniture containing wood, fabric or leather is subject to minor variations or irregularities of color, grain and texture. Compliance with applicable laws, regulation codes, certificates and manufacturing standards are disclaimed if this product is misused, improperly installed or modified in any respect (including without limitation, any change in fabric or mechanical components affecting stability, load capacity or load distribution) after shipment from the manufacturer.

The Nightingale Inc. warranty does not cover the cost of transportation or labor. There are no other warranties except as expressly set forth above, either expressed or implied, including any warranty of merchantability or fitness for any particular purpose.

## General Information:

- Upholstery  
2 yds/chair.
- Fabric Selection  
To specify simply add the suffix provided on the fabric card swatch of your choice to the chair model number (ie) 8201- ME -E01 (Epic Espresso)

## Nightingale Inc.

2301 Dixie Road, Mississauga, Ontario, Canada L4Y 1Z9  
Tel: (905) 896-3434 Toll Free: 1-800-363-8954  
Fax: (905) 896-7011 Toll Free: 1-800-637-6784  
E-mail: [info@nightingalechairs.com](mailto:info@nightingalechairs.com)  
Website: [www.nightingalechairs.com](http://www.nightingalechairs.com)

## Showrooms in

- Toronto
- Vancouver
- Montreal

Printed in Canada