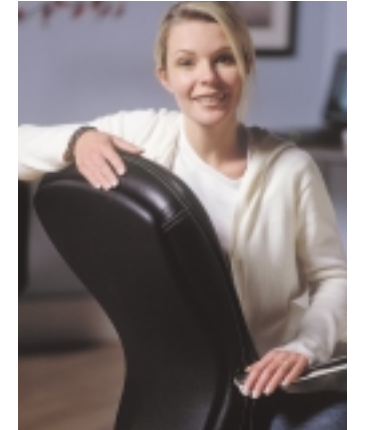
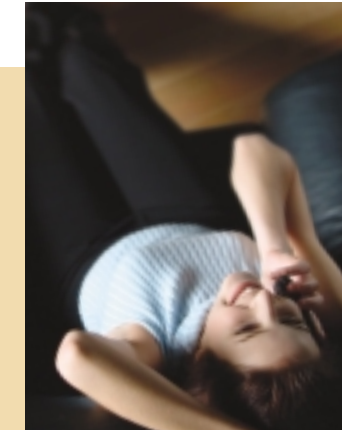




“Pleased to seat you.”



Since 1928, Nightingale has provided the world with inventive seating solutions. While much has changed in the past 75 years in the design and function of seating, our commitment to **comfort, quality and innovation** has always remained a constant.

Many of our seating products are patented and or design registered. We take great pride in the many awards and testimonials that our products have garnered over the years.

We invite you to discover the many fine products that we offer, and we look forward to providing you with seating solutions that always keep your comfort in mind.

comfort, quality and innovation





“Now that’s a great looking chair.”

Helene Dowe, Corporate Lawyer

Winpoint

Let’s face it - perception is often confused with reality. As much as some of us would like to assume substance wins over style, reality dictates quite the opposite.

So when you’re lucky enough to find something that maintains both qualities, you’d better not let it slip through your fingers.

Nightingale’s Winpoint chair is rare because it looks great and is built to operate smoothly. I can be seated for countless hours and still feel great, and when I see my reflection in the mirror, I feel even better.



- Key Features**
- Spring-steel flex-back with mesh cover for comfort and support.
 - Synchro-tilt, cable activated swivel mechanism with slow-release infinite position tilt lock, pneumatic height adjustment, built-in seat slider and tension control.
 - Height and width adjustable arms with polyurethane arm pads.
 - Perforated leather seat and back top cover for appearance.

Model	Description	Overall			Back Height	Seat Height	Back Width	Seat Depth	Seat Width	Weight (lbs)	Volume (cu ft)
		Width	Depth	Height							
6900D	High back	27	27-29 1/2	48-53 1/2	31	16-19 1/2	19	16 1/2-19 1/2	20-23	58	19/16
6900	Mid back	27	27-29 1/2	38-43 1/2	22	16-19 1/2	19	16 1/2-19 1/2	19-22	54	17 1/2
6901	Guest chair	25	19	38 1/2	21 1/2	18	19	17	19	42	17



Winpoint

Let's face it - perception is often confused with reality. As much as some of us would like to assume substance wins over style, reality dictates quite the opposite.

So when you're lucky enough to find something that maintains both qualities, you'd better not let it slip through your fingers.

Nightingale's Winpoint chair is rare because it looks great and is built to operate smoothly. I can be seated for countless hours and still feel great, and when I see my reflection in the mirror, I feel even better.



“Now that’s a sexy looking chair.”

Helene Dowe, Corporate Lawyer

Key Features

- Spring-steel flex-back with mesh cover for comfort and support.
- Synchro-tilt, cable activated swivel mechanism with slow-release infinite position tilt lock, pneumatic height adjustment, built-in seat slider and tension control.
- Height and width adjustable arms with polyurethane arm pads.
- Perforated leather seat and back top cover for appearance.

Model	Description	Overall			Back Height	Seat Height	Back Width	Seat Depth	Seat Width	Weight (lbs)	Volume (cu ft)
		Width	Depth	Height							
6900D	High back	27	27-29 1/2	48-53 1/2	31	16-19 1/2	19	16 1/2-19 1/2	20-23	58	19/16
6900	Mid back	27	27-29 1/2	38-43 1/2	22	16-19 1/2	19	16 1/2-19 1/2	19-22	54	17 1/2
6901	Guest chair	25	19	38 1/2	21 1/2	18	19	17	19	42	17



Vortec

Interior designers have two challenges when it comes to chairs. The first and most natural is finding one that looks great. The second is finding one that provides the necessary comfort and support.

Fortunately for me, the Vortec chair makes short work of both. It's modern, contemporary make-up looks great in any environment, and its innovative design features make for a consistently comforting, relaxing experience.



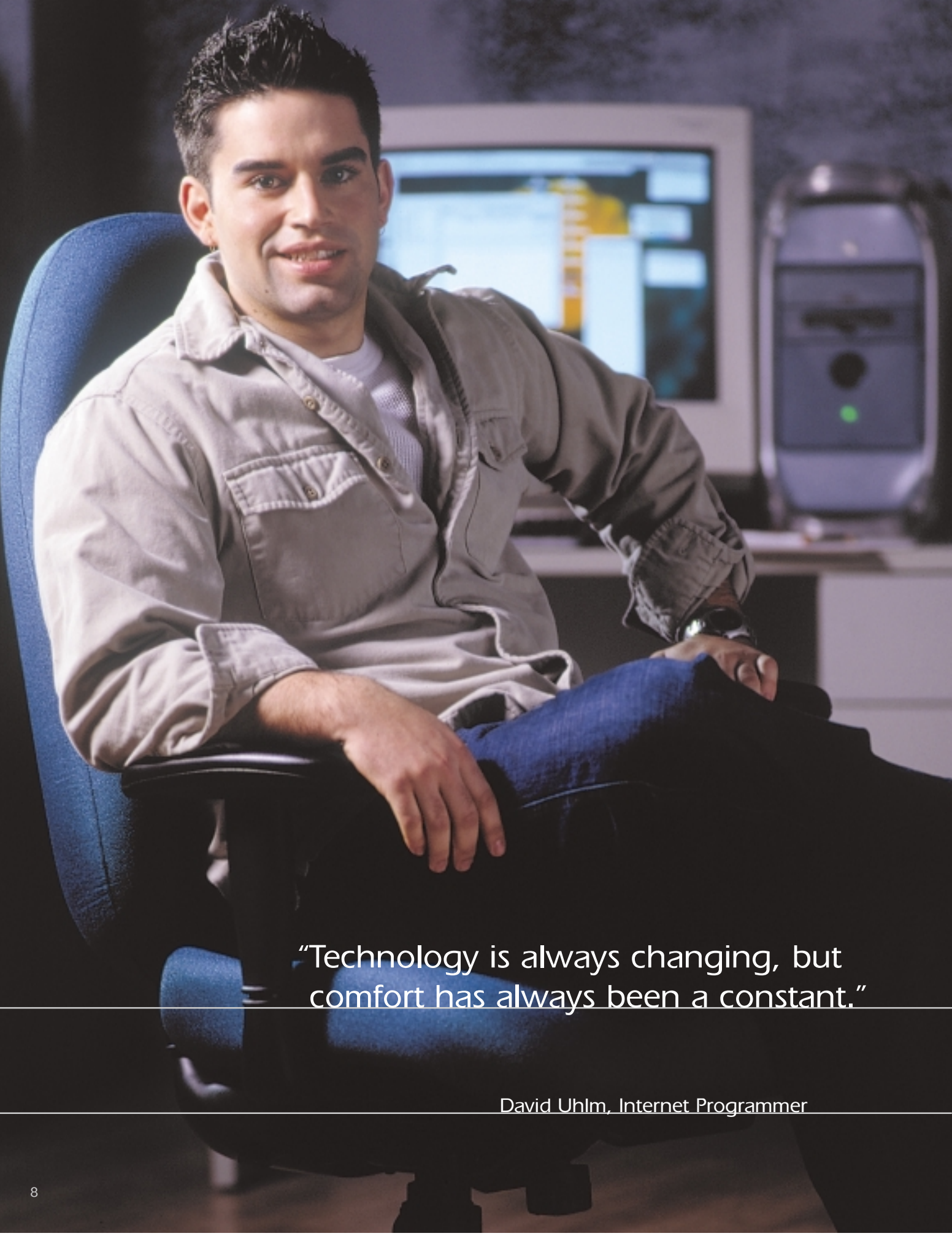
“If you can believe it, it’s as comfortable as it is attractive.”

Sarah Dansen, Interior Designer

Key Features

- Compound curved seat/back shell with built-in lumbar support and waterfall seat.
- Swivel-tilt mechanism with slow-release tilt lock, pneumatic height adjustment and tension control.
- Detailed stitching for stylish appearance.
- Injection molded plastic outside seat/back shell for durability.

Model	Description	Overall			Back Height	Seat Height	Back Width	Seat Depth	Seat Width	Weight (lbs)	Volume (cu ft)
		Width	Depth	Height							
5800D	High back	25	26 1/2	48 1/2-52	30	16-20 1/2	22	18 1/2	20 1/2	58	19/16
5800	Mid back	25	26 1/2	42 1/2-46	24	16-20 1/2	22	18 1/2	20 1/2	57	17/12
5802	Cantilever guest	24 1/2	28 1/2	40	24	18	22	18 1/2	20 1/2	57	17



“Technology is always changing, but comfort has always been a constant.”

David Uhlm, Internet Programmer

Legacy

My clients demand excellence. So do I. That's why I chose the Legacy chair from Nightingale. As a programmer, I'm sitting down for most of the day, so I need an ergonomic chair that's not only comfortable, but one that will last.

And that's what this chair offers. It helps to reduce back pain and discomfort and increases productivity – in short, it's a great investment to make in your people.



1600



1600D

Key Features

- Patented internal lumbar back support self adjusts to user's back, providing incredible lateral support and excellent pelvic stability.
- Ratchet height and width adjustable arms with pivoting pad for constant arm support.
- Ratchet back height adjustment.
- Infinite position swivel-tilt lock mechanism with built-in seat slider, pneumatic height adjustment and tension control.
- Contoured molded seat with waterfall design for correct posture.

Model	Description	Overall			Back Height	Seat Height	Back Width	Seat Depth	Seat Width	Weight (lbs)	Volume (cu ft)
		Width	Depth	Height							
1600D	High back	28 1/2-32	27-29 1/2	44-49 1/2	26-28 1/2	16-21 1/2	20	20-22 1/2	21 1/2-24 1/2	60	19/10
1600	Mid back	26 1/2-29 1/2	27-29 1/2	38-45 1/2	20 1/2-23	16-21 1/2	19 1/2	18-20 1/2	19-22 1/2	56	14/8.5
1650	Low back	26 1/2-29 1/2	27-29 1/2	36-43 1/2	18 1/2-21	16-21 1/2	19 1/2	18-20 1/2	19-22 1/2	55	14/8.5

Manno

What do I want from a chair? Good looks? Quality construction? Ingenious design? Yes. Yes. Yes. Because that's what a chair should be, and it's exactly what the Manno is.

Graceful, theatrical lines please my sense of style, and undeniable comfort gratifies my sense of being.

“Classy? Now that’s an understatement.”



Manno Timber

Classical in appearance, yet modern in design. To me, that's Nightingale's Manno Timber chair.

Hand-crafted, intricately detailed wood arms and base caps highlight the seating surface for a distinctive look that gives my office an understated allure and sense of style that's all my own.



8672



8600D



8602



8660D

Key Features

- Synchro-tilt swivel mechanism with slow-release infinite position lock, pneumatic height adjustment, tension control.
- Compound curved back for comfort and support.
- Waterfall seat design to reduce muscle fatigue.
- Matching flex-back guest chair.

Model	Description	Overall			Back Height	Seat Height	Back Width	Seat Depth	Seat Width	Weight (lbs)	Volume (cu ft)
		Width	Depth	Height							
8600D	High back	28	27	44 1/2, 48 1/2	26 1/2	18-22 1/2	20	19 1/2	21	70	19/16
8600	Mid back	28	27	40 1/2, 44 1/2	22 1/2	18-22	20	19 1/2	21	68	17/16
8670D	High back	26	27	44 1/2, 48 1/2	26 1/2	18-22	20	19 1/2	21	70	19/16
8602	Guest Cantilever	26 1/2	25	35	19	18	18	19	19 1/2	50	17
8660D	High back	26	27	44 1/2, 48 1/2	26 1/2	18-22	20	19 1/2	21	70	19/16
8662	Cantilever guest	25 1/2	25	35	20	19	18	19	19 1/2	50	17



“An outstanding idea or product is always well thought out.”

Sven Jacobsson, Advertising Executive

Khroma

I provide people with original, memorable solutions that set them apart from the competition. Above and beyond that, I’m constantly challenged with improving an existing idea or plan.

So when I’m sitting in my office, thinking about how to accomplish all that, it’s nice to know that my chair is just as thoughtful when it comes to my comfort level. This chair comes exactly as advertised - sexy, intelligent and creatively constructed.



Key Features

- Ergonomically contoured back with generously upholstered seat.
- Knee-tilt swivel mechanism with single position tilt lock, tension control.
- Chrome plated arm rests with upholstered leather arm pads.
- High density foam for comfort and durability.
- Polished aluminum base.

Model	Description	Overall			Back Height	Seat Height	Back Width	Seat Depth	Seat Width	Weight (lbs)	Volume (cu ft/RTA)
		Width	Depth	Height							
3400D	High back	25	28	42-45	16 1/2	19 1/2	20	19	20	50	17/6



“It’s nice to be able to concentrate on my work for a change.”

Eric Sutton, Office Manager

Fantail

It’s hard to be at your best when you’re in pain. My back was killing me, so I decided to finally do something about it and bought a Nightingale Fantail chair.

It’s perfectly suited to meet my needs – tough, flexible, well-built and of course, as comfortable as it gets. In fact, I like it so much, I managed to convince my boss to outfit the entire office with Fantails.



Key Features

- Synchro-tilt swivel mechanism with free float or variable position tilt lock, pneumatic height adjustment, tension control.
- Compound curved back for ergonomic support with ratchet back height adjustment.
- Stylish plastic outer back shell to enhance design appearance and durability.
- Height adjustable arms with wide polyurethane arm pads.
- Waterfall seat design to reduce muscle fatigue.

Model	Description	Overall			Back Height	Seat Height	Back Width	Seat Depth	Seat Width	Weight (lbs)	Volume (cu ft)
		Width	Depth	Height							
860	High back	26	25	36-41 1/2	18 1/2-20 1/2	16 1/2-22	20	18 1/2	21	50	14/12
867	High back armless	26	25	36-41 1/2	18 1/2-20 1/2	16 1/2-22	20	18 1/2	21	43	14/12



"I feel a lot better sitting here than I do about this essay question."

Cameron Purcell, Student

Beetle

I remember the chairs they used to have in here before. You know the kind – those old, wooden torture racks with the splintered work tablets.

One day I walked in and saw these new chairs. Beetle is their name from what I was told. They look like they're from this century and they feel great. Maybe it's just a coincidence, but my class's GPA has gone up a full grade since we got these chairs.



301



308

Key Features

- Textured polypropylene seat and back shell contoured for durability and comfort.
- Chrome plated 7/16" solid steel wire frame with set-back cross bar support to provide improved leg clearance.
- Stacks 45 high with dolly and will pass through a standard doorway height of 79".
- Plastic seat and back available in a variety of colors.

Model	Description	Overall			Back Seat			Weight (lbs)	Volume (cu ft)
		Width	Depth	Height	Height	Width	Depth		
301	High density stacker with arms	25 1/2	22 1/2	32 1/4	17	18	16 1/2	18	11
308	High density stacker armless	19 1/4	22 1/2	32 1/4	17	18	16 1/2	18	11
300AT	Side chair with tablet	20	22 1/2	32 1/4	17	18	16 1/2	18	14
309	Natural wood stacker armless	19 1/4	22 1/2	32 1/4	17	18	16 1/2	18	11
30D	Stacking Dolly	22 1/2	25 1/2	14 1/2				30	5



"Waiting to have a cavity filled isn't my idea of fun. At least this chair is comfortable."

Ed Burbank, Engineer

Spider

I don't think anyone really enjoys going to the dentist. And I know nobody likes to sit in a chair that makes them uncomfortable while they're waiting.

This Spider chair is making my visit a lot easier. I'm going to have to ask Dr. Brenner where he bought them so I can get some for my office.



Key Features

- Compound curved molded wood seat and back for exceptional comfort and support.
- Side chairs stack 10 high on dolly, 6 high freestanding.
- High density, high resiliency foam for comfort and durability.
- Waterfall seat design to reduce muscle fatigue.
- Angled back legs for anti-tipping.

Model	Description	Overall			Back Height	Seat Height	Back Width	Seat Depth	Seat Width	Weight (lbs)	Volume (cu. ft.)
		Width	Depth	Height							
600	Side chair	22 ^{1/2}	24	34	17	17 ^{1/2}	17	18	18 ^{1/2}	21	11
601	Side chair armless	22	24	34	17	17 ^{1/2}	17	18	18 ^{1/2}	21	11
620	Sled chair	22	24	34	17	17 ^{1/2}	17	18	18 ^{1/2}	22	11
621	Sled chair armless	22	24	34	17	17 ^{1/2}	17	18	18 ^{1/2}	22	11
60D	Dolly	23 ^{1/2}	25 ^{1/2}	14 ^{1/2}						32	6



"I'm sitting down for hours on end every day."

Derrick Gentry, Sound Engineer

247

On average, I'd say I'm sitting down around five to eight hours every day. And while I shouldn't complain about it, it can get uncomfortable if my chair isn't up to the task.

Nightingale's 247 chair makes the hours seem like seconds. It's tough, flexible and perfectly suited for me, and people like EMS workers, police officers, or anyone who has to work in a multi-shift environment.



Key Features

- Swivel-tilt mechanism with infinite position tilt lock, seat slide adjustment, pneumatic height adjustment and tension control.
- Compound curved back for passive back support.
- Width and height adjustable arms with concave polyurethane arm pads.
- Rated for individuals up to 400lbs.
- Built-in lumbar back support and waterfall seat.

Model	Description	Overall			Back Height	Seat Height	Back Width	Seat Depth	Seat Width	Weight (lbs)	Volume (cu ft)
		Width	Depth	Height							
247HR	High back with headrest	26 1/2-30	26 1/2	49-54 1/2	30-32	18-23 1/2	21	18 1/2-20 1/2	21 1/2	91	20/16
247	High back	26 1/2-30	26 1/2	40 1/2-46	22	18-23 1/2	21	18 1/2-20 1/2	21 1/2	81	19/12
247AT	High back with tablet arm	26 1/2-30	26 1/2	40 1/2-46	22	18-23 1/2	21	18 1/2-20 1/2	21 1/2	81	19

“My business is all about making people feel at home.”

Alex Hunt, Caterer

Studio

One of the secrets of my success is making people feel at ease. So when they come to visit me at my office, I want them to be completely comfortable.

That's why I chose Nightingale's Studio sofa and chair. Not only do they look and feel great, but they're designed to last and make people feel like they're right at home, which makes my job a lot easier.



1301



1303

Key Features

- High tensile, rubber webbing inner suspension support system for comfort and durability.
- Built-in ergonomic lumbar support.
- Solid hardwood frame construction.
- High density, high resiliency foam.

Model	Description	Overall			Back Height	Seat Height	Back Width	Seat Depth	Seat Width	Weight (lbs)	Volume (cu ft)
		Width	Depth	Height							
1301	Club chair	44	36	36	22	17	37	21	21	85	33
1302	2 seat sofa	67	36	36	22	17	59	21	40	120	50
1303	3 seat sofa	91	36	36	22	17	78	21	62	150	68

Nightingale

What makes a company great?

Is it quality products and services? Is it value for your money? At Nightingale, we believe it's a combination of all these things.

That's why it's our goal to provide you with seating solutions that are not only well built and well thought out, but also offer you exceptional value. You'll find this commitment in all of our products, and more importantly – you'll feel it.

We welcome you to discover the difference Nightingale can make to your working environment. To do just that, call us toll-free at

1.800.363.8954,
or visit us online at
www.nightingalechairs.com

Tel: (905) 896-3434
Toll Free: 1-800-363-8954
Fax: (905) 896-7011
Toll Free: 1-800-637-6784

E-mail: info@nightingalechairs.com
Website: www.nightingalechairs.com



confessions of
comfort



Nightingale