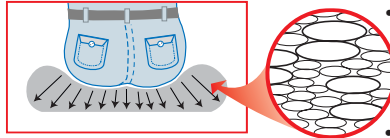


# ErgoXtra

Model	Description	Overall Dimensions						Specific Dimensions													
		Width		Depth		Height		Back Height		Seat Height		Back Width		Seat Depth		Seat Width		Weight		Volume Reg / K.D.	
		(in.)	(mm.)	(in.)	(mm.)	(in.)	(mm.)	(in.)	(mm.)	(in.)	(mm.)	(in.)	(mm.)	(in.)	(mm.)	(in.)	(mm.)	(lbs.)	(kg.)	(cu.in.)	(cu.mt.)
1860DX	Ergonomic Task Management Seating	24 1/2-28	622-711	26-27 1/2	660-699	19-21 3/4	908-1080	19-21 3/4	483-552	18 1/2-21 1/2	470-546	20	508	18 1/2	470	19	483-546	56	25	14.0 / 9.0	0.40 / 0.25
3600DX		24-27 1/2	610-699	24	609	19-21	889-1080	19-21	483-533	18-23	457	18 1/2	470	18	457	19 1/2	495-559	46	21	13.5 / 8.0	0.38 / 0.23
3200X		27	686	24-25 1/2	609-648	18 1/2-20 1/2	940-1118	18 1/2-20 1/2	470-521	18 1/2-23 1/2	470-597	18 1/2	470	17 1/2-19 1/2	444-495	19 1/2	495	50	23	13.5 / 8.0	0.38 / 0.23

## Option - Enersorb Foam Seat



- Reduces sitting fatigue
- Creates a high comfort factor by providing evenly distributed support
- User does not sit on top, but sits into the cushion
- Dispenses weight horizontally and vertically

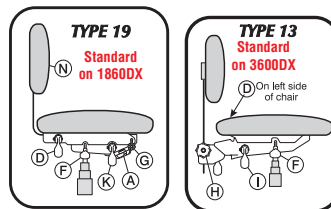
## General Information:

- Soft wheel casters should be specified for hard floor surfaces.
- Upholstery  
1860DX, 3200X 2yd/chair  
3600DX 1 1/2yd/chair
- Fabric Selection  
To specify simply add the suffix provided on the fabric card swatch of your choice to the chair model number (ie) 1860D - E01 (Epic Espresso)

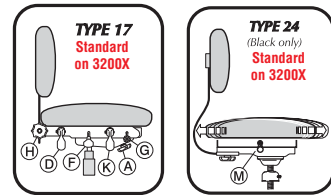
### Note:

A pillow upholstery technique is used with leather or leather plus to provide a wrinkled, plush appearance. When fabric is specified an extra level of foam is added, which is then upholstered in the conventional manner to provide a soft, elegant appearance.

## Mechanism User Guide



- TYPE 19**  
Standard on 1860DX
- TYPE 13**  
Standard on 3600DX
- A Tension Knob**  
Turn clockwise to increase tension, turn counter-clockwise to decrease tension
- C Seat Depth Adjustment**  
Loosen hand wheel (do not remove) and slide back to desired position, then re-tighten hand wheel.



- D Back Angle Adjustment**  
While seated, pull paddle up, when desired angle is achieved push paddle down to lock.
- F Pneumatic Height Adjustment**  
To lower, lift paddle while seated. To raise, lift paddle with your weight off seat.
- G Forward Tilt**  
Lean back in chair and roll or pull lever back for forward tilt, push or roll lever forward for straight position.

- H Back Height Adjustment**  
Turn knob counter-clockwise to loosen, lift or lower chair back to desired position and re-tighten.
- I Infinite Seat Angle Adjustment with 6° Forward Tilt**  
To change seat angle, pull paddle up while seated, push paddle down to lock when desired angle is achieved.
- K Infinite Position Tilt Lock**  
To lock chair in position, push paddle down, to allow free movement, pull paddle up.
- M Seat Slider**  
While seated, pull knob out, push seat to desired depth and release knob to lock. Locks in 6 positions over 3 inches.
- N Ratchet back Height Adjustment**  
Simply lift back to desired position and back locks automatically.



Under the Nightingale Inc. warranty all claims must be made within the time period as specified.

Nightingale Inc. offers a Lifetime Limited Warranty, **unless otherwise specified**, from date of purchase by original purchaser, on all non-moving metal components. Nightingale Inc. also warrants that self-skinned urethane parts, plastic shells, casters, wood parts and mechanisms will carry a (5) five year warranty. Upholsteries will carry a (2) two year warranty. Pneumatic cylinders will carry a (10) ten year warranty.

The Nightingale Inc. warranty is based on normal use of eight (8) hours a day, five (5) days per week by individuals of 250 lbs. or less.

Nightingale Inc. reserves the exclusive and sole right to repair, correct or replace at our option, any Nightingale Inc. seating product which upon our inspection is declared defective in material or workmanship.

The Limited Lifetime Warranty does not apply to Nightingale Inc. products that are used for rental purposes and is effective only for products, parts or components manufactured after January 1, 1999.

The Lifetime Limited Warranty applies only to customers in Canada and the United States.

The Nightingale Inc. warranty does not apply to damage caused by accident, abuse, negligence, abnormal use or use with extreme climatic conditions. Normal climatic condition is defined as the temperature and moisture content range for human comfort and health. Due to the inherent nature of certain material used, all furniture containing wood, fabric or leather is subject to minor variations or irregularities of color, grain and texture. Compliance with applicable laws, regulation codes, certificates and manufacturing standards are disclaimed if this product is misused, improperly installed or modified in any respect (including without limitation, any change in fabric or mechanical components affecting stability, load capacity or load distribution) after shipment from the manufacturer.

The Nightingale Inc. warranty does not cover the cost of transportation or labor. There are no other warranties except as expressly set forth above, either expressed or implied, including any warranty of merchantability or fitness for any particular purpose.

## Nightingale Inc.

2301 Dixie Road, Mississauga, Ontario, Canada L4Y 1Z9  
Tel: (905) 896-3434 Toll Free: 1-800-363-8954  
Fax: (905) 896-7011 Toll Free: 1-800-637-6784  
E-mail: nighting@ilap.com  
Website: www.nightingale.com

## Showrooms in

- Toronto
- Vancouver
- Montreal
- New York

Printed in Canada

# Nightingale

## ErgoXtra



# ErgoXtra

Nightingale is setting a new standard for ergonomic seating with the introduction of Ergo-Xtra chairs. These three chair models offer an exceptional array of features allowing the individual to easily adjust the chair to virtually any desired position.

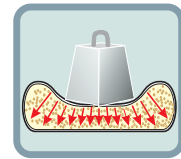


1860DX

## 1860DX STANDARD FEATURES:



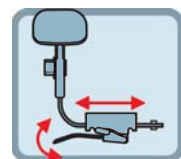
PATENTED LUMBAR AND LATERAL SUPPORT



ENERSORB FOAM SEAT



RATCHET BACK HEIGHT ADJUSTMENT



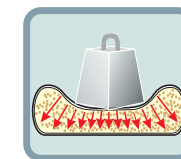
LEVER OPERATED HORIZONTAL & HEIGHT ADJUSTMENT

- Patented - Internal lumbar and lateral back support that self adjusts to the user's back for personalized support and comfort.
- Enersorb foam seat. Enersorb foam is a unique foam composition that absorbs and conforms to the weight and shape of the user, dispersing weight horizontally and vertically, dramatically reducing the potential for sitting fatigue.
- Ratchet back height adjustment. Simply lift back to desired position and back locks automatically. To release and reset back position, lift back and move to new setting.
- 4-way horizontal and height adjustable arms with tear drop polyurethane arm pads. Simple finger-tip lever easily allows for horizontal arm adjustment while sitting. To adjust arm width, push lever down, move arm to desired position and pull lever up to lock. For height adjustment, turn adjustable knob to desired position.
- Swivel-tilt mechanism (Type 19) Infinite position or free float back angle adjustment, variable position swivel-tilt lock, 6° forward tilt, pneumatic height adjustment, back height adjustment, tension control.
- High density, high resiliency molded back foam contoured for correct posture.
- Waterfall seat design to reduce muscle fatigue.
- Contoured back for lateral support and comfort.
- Fully upholstered back.
- Attractive modern spider design - 5 prong heavy duty nylon base.
- 2" dual wheel carpet casters.
- Finish - mechanism, arms, base, casters and trim available in black or gray.
- California fire code #117.
- ANSI/BIFMA.

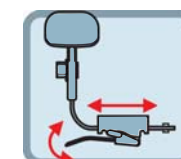


3600DX

## 3600DX STANDARD FEATURES



ENERSORB FOAM SEAT

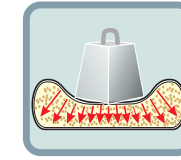


LEVER OPERATED HORIZONTAL & HEIGHT ADJUSTMENT

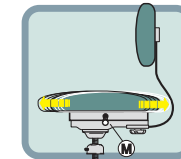
- Swivel mechanism (Type 13) Infinite seat angle adjustment with 6° forward tilt, free float or variable position back angle adjustment, back height adjustment, pneumatic height adjustment.
- Enersorb foam seat.
- 4-way and height adjustable arms with tear drop polyurethane arm pads.
- Thicker high density back foam for added support and comfort.
- Contoured back for lateral support and comfort.
- Fully upholstered back.
- Attractive modern spider design - 5 prong heavy duty nylon base.
- 2" dual wheel carpet casters.
- Finish - mechanism, arms, base, casters and trim available in black or gray.
- ANSI/BIFMA.

## 3200X STANDARD FEATURES:

- Swivel-tilt mechanism (Type 17) Infinite position swivel-tilt lock, free float or variable back angle adjustment, back height adjustment, 6° forward tilt lock, pneumatic height adjustment, tension control.
- Adjustable sliding seat mechanism (Type 24) (black only). While seated, pull knob out, push seat to desired depth and release knob to lock. Locks in 6 depth adjustments over 3 inches. This feature is ideal for those individuals who require a shorter or longer seat.
- Enersorb foam seat.
- Thicker high density back foam for added support and comfort.
- Height adjustable arms with tear drop polyurethane arm pads.
- Contoured back for lateral support and comfort.
- Attractive modern spider design - 5 prong heavy duty nylon base.
- 2" dual wheel carpet casters.
- Finish - mechanism, arms, base, casters and trim available in black or gray.
- Fully Upholstered back.
- ANSI/BIFMA.



ENERSORB FOAM SEAT



SLIDING SEAT MECHANISM



3200 X