

247 - 24 Hour Chair

The name says it all! Designed for those applications requiring heavy duty round the clock usage. This chair has an ergonomic contoured seat and back and is equipped with a 400 lb pneumatic seat height adjustment, seat slider for seat depth adjustment, height and width adjustable arms, tension control, and a lockable infinite position swivel tilt mechanism that features a passive seat movement that provides exceptional support and comfort for the user.

Model	Description	Overall Dimensions						Specific Dimensions													
		Width		Depth		Height		Back Height		Seat Height		Back Width		Seat Depth		Seat Width		Back Width		Volume Reg./K.D.	
		(in.)	(mm.)	(in.)	(mm.)	(in.)	(mm.)	(in.)	(mm.)	(in.)	(in.)	(in.)	(mm.)	(in.)	(mm.)	(in.)	(mm.)	(lbs.)	(kg.)	(cu.ft.)	(cu.ft.)
247	High Back Intensive Task	26 1/2-30	673-762	26 1/2	673	40 1/2-46	1029-1168	22	559	18-23 1/2	457-597	21	533	18 1/2	470	21 1/2	546	81	37	19 / 12	0.54 / 0.34

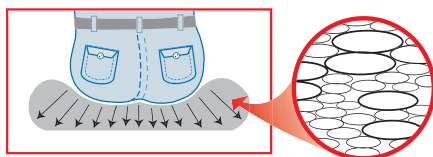
Standard Features •

- Swivel tilt mechanism (Type 28), infinite position tilt lock, pneumatic height adjustment, tension control.
- Passive seat movement.
- Seat sliding mechanism adjustment locks in 6 positions over 2 1/2" of travel.
- High density, high resiliency back and molded seat foam.
- Waterfall seat design to reduce muscle fatigue.
- Built-in lumbar back support
- Width and height adjustable arms with polyurethane tear drop arm pad.
- 5 prong heavy duty steel base with plastic caps.
- 2" dual wheel carpet casters.
- California Fire Code # 117.
- Finish-mechanism, arms, base casters and trim available in black only.
- ANSI / BIFMA.

Options ○

Model	Description	Miscellaneous		
		Soft Wheel Caster - TC	Enersorb Foam Seat - E	Fire Code # 133 - FR
247	To specify any option(s) simply add the suffix(s) to the model number. (ie) 247-TC			
247	High Back Intensive Task	○	○	○

Option - Enersorb Foam Seat

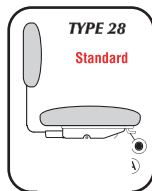


- Reduces sitting fatigue
- Creates a high comfort factor by providing evenly distributed support
- User does not sit on top, but sits into the cushion
- Dispenses weight horizontally and vertically

General Information:

- Upholstery
2 1/2 yds/chair
- Patent pending
- Fabric Selection
To specify simply add the suffix provided on the fabric card swatch of your choice to the chair model number (ie) 247 -E01 (Epic Expresso)

Mechanism User Guide



A Tension Knob

Turn clockwise to increase tension, turn counter-clockwise to decrease tension

F Pneumatic Height Adjustment

To lower, lift paddle while seated. To raise, lift paddle with your weight off seat.

K Infinite Position Tilt Lock

To lock chair in position, push paddle down, to allow free movement, pull paddle up.

O Seat Slider

Pull lever bar up to unlock, move seat to desired position, release lever to lock into position.

Warranty for 247 chair

Under the Nightingale Inc. warranty, all claims must be made within the time period specified.

Nightingale Inc. offers a Lifetime Limited Warranty, **unless otherwise specified**, from the date of purchase by original purchaser, on all non-moving metal components. Nightingale Inc. also warrants that self-skinned urethane parts, plastic shells, casters, wood parts and mechanisms will carry a (5) five year warranty. Upholsteries will carry a (2) two year warranty. Pneumatic cylinders will carry a (10) ten year warranty.

The Nightingale Inc. warranty is based on normal use of eight (8) hours a day, five (5) days per week by individuals of 250 lbs. or less.

Nightingale Inc. reserves the exclusive and sole right to repair, correct or replace at our option, any Nightingale Inc. seating product which upon our inspection is declared defective in material or workmanship.

The Limited Lifetime Warranty does not apply to Nightingale Inc. products that are used for rental purposes and is effective only for products, parts or components manufactured after January 1, 1999.

The Lifetime Limited Warranty applies only to customers in Canada and the United States.

The Nightingale Inc. warranty does not apply to damage caused by accident, abuse, negligence, abnormal use or use with extreme climatic conditions. Normal climatic condition is defined as the temperature and moisture content range for human comfort and health. Due to the inherent nature of certain material used, all furniture containing wood, fabric or leather is subject to minor variations or irregularities of color, grain and texture. Compliance with applicable laws, regular codes, certificates and manufacturing standards are disclaimed if this product is misused, improperly installed or modified in any respect (including without limitation, any change in fabric or mechanical components affecting stability, load capacity or load distribution) after shipment from the manufacturer.

The Nightingale Inc. warranty does not cover the cost of transportation or labor except as noted. There are no other warranties except as noted. There are no others warranties except as expressed or implied, including any warranty of merchantability or fitness for particular purpose.

Warranty Exception — 247-24 Hour Chair

Under this specific warranty, urethane parts, plastic shells, casters, wood parts, pneumatic cylinders and mechanisms will carry a five (5) year Limited Warranty. Foam and fabric will carry a one (1) year Limited Warranty. This warranty is based on normal use by individuals of 400 lbs or less. All other General Warranty conditions as stated above apply.

Nightingale Inc.

2301 Dixie Road, Mississauga, Ontario, Canada L4Y 1Z9
Tel: (905) 896-3434 Toll Free: 1-800-363-8954
Fax: (905) 896-7011 Toll Free: 1-800-637-6784
E-mail: info@nightingalechairs.com
Website: www.nightingalechairs.com

Showrooms in

- Toronto
- Vancouver
- Montreal