

4260 Harmony Series

Model	Description	Overall Dimensions						Specific Dimensions													
		Width (in.) (mm.)		Depth (in.) (mm.)		Height (in.) (mm.)		Back Height (in.) (mm.)		Seat Height (in.) (mm.)		Back Width (in.) (mm.)		Seat Depth (in.) (mm.)		Seat Width (in.) (mm.)		Weight (lbs.) (kg.)		Volume Reg/K.D. (cu.ft.) (cu.mt.)	
4260D	High Back Executive-Wood	24	609	28 ¹ / ₂	724	40-43 ¹ / ₂	1016-1105	23	584	18-21 ¹ / ₂	457-546	20	508	19	483	20	508	50	23	17 / 12	0.48 / 0.34
4260	Mid Back Management	24	609	27	686	36-39 ¹ / ₂	914-1003	19	483	18-21 ¹ / ₂	457-546	20	508	19	483	20	508	46	21	14 / 12	0.40 / 0.34
4261	Guest-Wood Armchair	24	609	27	686	35	889	19	483	19	483	20	508	19	483	20	508	35	16	14	0.40

Standard Features •

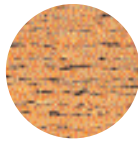
- Swivel tilt mechanism (4260D, 4260) (Type 8) Pneumatic height adjustment, tension control.
- High density seat and back foam for comfort and durability.
- Waterfall seat design to reduce muscle fatigue.
- Compound curved seat and back shell with gentle lumbar curve for correct posture.
- Solid hardwood arms and/or frame. See chart below for available wood finish.
- 5 prong steel base with wood caps.
- 2" dual wheel carpet casters.
- Finish - mechanism, casters and trim available in black only.
- California fire code # 117
- ANSI/BIFMA.

Options - ○

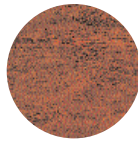
Model	Description	Miscellaneous		
		Type 18 Swivel Tilt Lock - TL	Soft-Tile Casters - TC	Wood Finish-Arms / Base Caps
	To specify any option(s) simply add the suffix(s) to the model number. (ie) 4260D - TL	To specify simply add the suffix to the model number as indicated on the chart below (ie) 4260D-ME		
4260D	High Back Executive-Wood	○	○	○
4260	Mid Back Management	○	○	○
4261	Guest-Wood Armchair			○

Option - Wood Finish

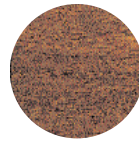
Please allow 4 weeks lead-time for delivery of wood finishes.



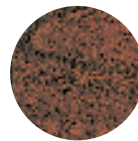
ME-Oak



CY-Cherry



WL-Walnut

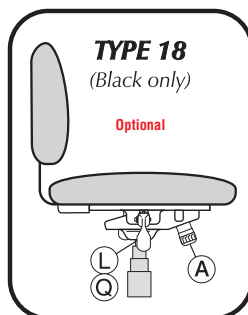
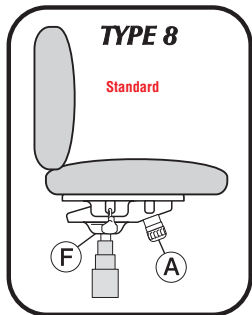


MH-Mahogany

Note:

All wood is hand finished and quality crafted to order.

Mechanism User Guide



Ⓐ Tension Knob

Turn clockwise to increase tension, turn counter-clockwise to decrease tension

Ⓕ Single Position Tilt Lock

Push lever in to lock chair in forward position, pull lever out to unlock.

Ⓖ Pneumatic Height Adjustment

To lower, lift paddle while seated. To raise, lift paddle with your weight off seat.

General Information:

- Soft wheel casters should be specified for hard floor surfaces.
- Upholstery
All models 2 ³/₄ yds/chair
- Patent pending
- Fabric Selection
To specify simply add the suffix provided on the fabric card swatch of your choice to the chair model number (ie) 4260D -E01 (Epic Expresso)

Nightingale Inc.

2301 Dixie Road, Mississauga, Ontario, Canada L4Y 1Z9
Tel: (905) 896-3434 Toll Free: 1-800-363-8954
Fax: (905) 896-7011 Toll Free: 1-800-637-6784
E-mail: info@nightingalechairs.com
Website: www.nightingalechairs.com

Showrooms in

- Toronto
- Vancouver
- Montreal