



FIBERCEMENT RAINSCREENS

**CLADDING CORP**

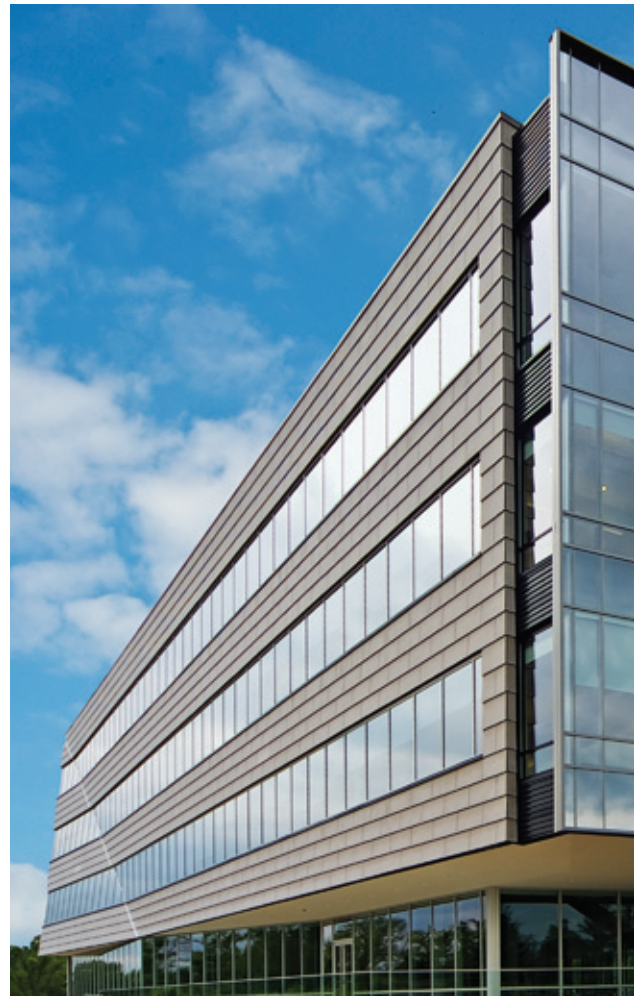


A successful drained and back-ventilated rainscreen is not limited to the cladding materials and sub-framing system alone, it requires educated design based upon a holistic approach to detailing the exterior envelope. System<sup>5</sup> is a fully integrated rainscreen approach that begins with the outer skin of the wall and works its way back to the air/water barrier (AWB). Rather than isolating the design of the cladding materials independent of the entire wall assembly, System<sup>5</sup> focuses on all of the elements required to create a weathertight cladding assembly.

Cladding Corp is an advocate for this "outside-in" approach and base our systems around *The 5 Principles of Rainscreen Cladding Design*, starting with the selection of the cladding material and ending with the inner waterproofing of the wall.

## THE 5 PRINCIPLES DEFINED:

- 1. CLADDING MATERIAL SELECTION**  
Select and understand the performance characteristics of the cladding product
- 2. OUTER MOISTURE CONTROL**  
Design cladding and joints to deter water from entering system cavity
- 3. CLADDING CAVITY DESIGN**  
Design the cladding cavity with a specific focus on ventilation, thermal and acoustic performance
- 4. ENGINEERED SUBFRAMING**  
Design system with a focus on material, structural and seismic performance
- 5. INNER MOISTURE CONTROL**  
Design air/water barrier with a focus on flashing details and backup wall type



Three Crescent Drive - Philadelphia, PA / EM Architecture, LLC

TERRY WIECKERT



Fibercement is uniquely suited for a variety of exterior applications and has been embraced as the ideal product for modern rainscreen design. By combining our fibercement panels with the System<sup>5</sup> design approach, Cem<sup>5</sup> is born.

Unique among the landscape of fibercement products on the market today, Cem<sup>5</sup> Fibercement is a rainscreen solution that incorporates *The 5 Principles of Rainscreen Cladding Design* and offers fibercement in a diverse range of colors and format sizes, engineered for project-specific criteria.

## Cem<sup>5</sup> Proven Success

The complex geometry of the inclined soffit on the Juilliard School's renovated Alice Tully Hall required a Cem<sup>5</sup> system solution that was technically advanced, yet easy to install.

Alice Tully Hall - New York, NY / FX FOWLE

MARK BUSSELL

## Cem<sup>5</sup> Fibercement Advantages

### Light Weight

Cladding assembly weighs less than 4lbs/sf - an ideal solution for new construction or retrofit

### Dependable

All systems incorporate *The 5 Principles* assuring proper design of the cladding assembly

### Tested and Proven

All systems are tested for material performance, structural analysis and moisture control

### Performance

We utilize the AAMA 509 Standard for ventilation and moisture control

### Single-Source Responsibility

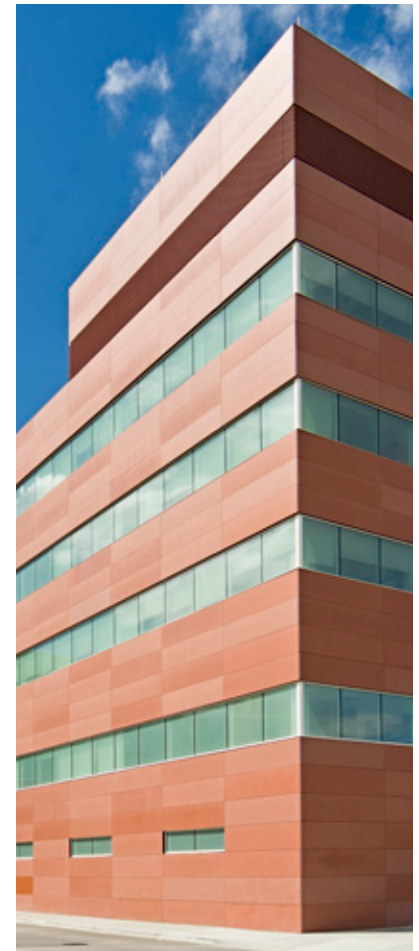
We deliver a single-source cladding assembly including connections of cladding panels, layout of subframing components and attachment points to backup wall

### Engineered Simplicity

Careful attention to engineering detail ensures ease of installation and defines us as the system of choice for installers

### History of Success

Over 10 years experience promoting and designing rainscreen systems in North America



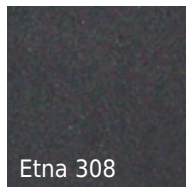
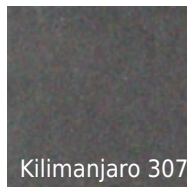
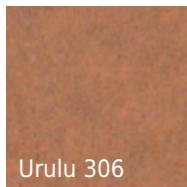
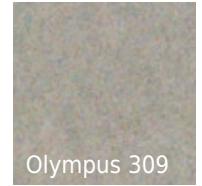
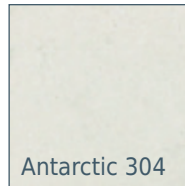
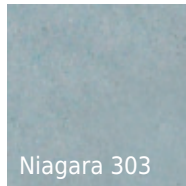
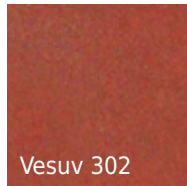
UNM Cancer Center - Albuquerque, NM / RMKM Architecture

TERRY WIECKERT

# Colors & Sizes

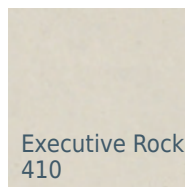
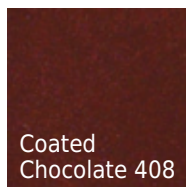
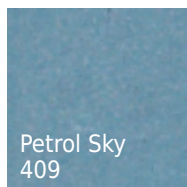
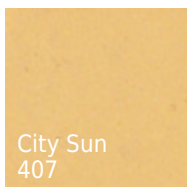
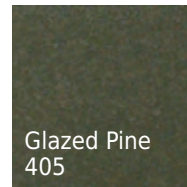
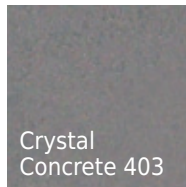
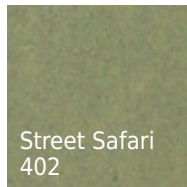
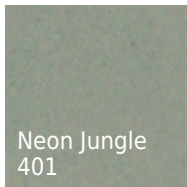
Our panels are available in a variety of colors and formats - the perfect product to meet your rainscreen needs.

**TRUE** This series is a through-colored core fibercement panel with a transparent top coating that gives the panel a deep, rich and consistent color on the panel's surface.



	Through Colored	Painted	Dimensions	Thickness
TRUE	YES	NO	2500 mm [ 98.43" ] x 1250 mm [ 49.21" ] 3050 mm [ 120.08" ] x 1250 mm [ 49.21" ]	8 mm [ 0.31" ]

**FUSION** This series is a through-colored core fibercement panel with a semi-transparent top coating that allows the natural depths of the fibercement core to be visible in the panel surface.



	Through Colored	Painted	Dimensions	Thickness
FUSION	YES	NO	2500 mm [ 98.43" ] x 1250 mm [ 49.21" ] 3050 mm [ 120.08" ] x 1250 mm [ 49.21" ]	8 mm [ 0.31" ]

Through-Colored Core



## METRO

This series is a grey-core fibercement panel with a bright and vibrant UV-stable painted surface. Economical and versatile, the Metro series offers great flexibility when custom colors are required.



	Through Colored	Painted	Dimensions	Thickness
METRO	NO	YES	2500 mm [ 98.43" ] x 1250 mm [ 49.21" ] 3050 mm [ 120.08" ] x 1250 mm [ 49.21" ]	8 mm [ 0.31" ]

## EDGE

This series is a grey-core fibercement panel with a unique semi-transparent coating that gives the panel color variation while retaining the natural modeled appearance unique to fibercement.



	Through Colored	Painted	Dimensions	Thickness
EDGE	NO	NO	2500 mm [ 98.43" ] x 1250 mm [ 49.21" ] 3050 mm [ 120.08" ] x 1250 mm [ 49.21" ]	8 mm [ 0.31" ]

## System<sup>5</sup> Design Approach

We only use durable, non-corrosive sub-framing components that are engineered and tested to withstand all project loading criteria, including thermal movements, windload, impact and seismic forces.



Hourglass Fieldhouse - San Diego, CA / Carrier Johnson

KEVIN WALSH



Metropolitan Business Academy - New Haven, CT /  
The S/LA/M Collaborative



The Standard Hotel - New York, NY /  
Polshak Partnership Architects

MARK BUSSELL

## Solutions for Sustainable Design

Properly designed rainscreen systems offer unique benefits for sustainable design. Coupled with the long-lasting durability of the material, the Cem<sup>5</sup> product offers the following benefits:

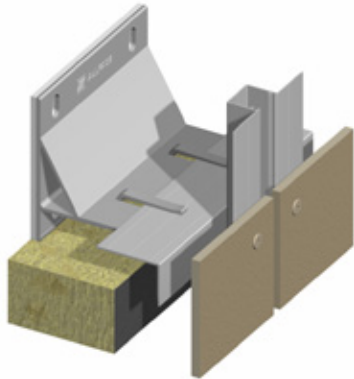
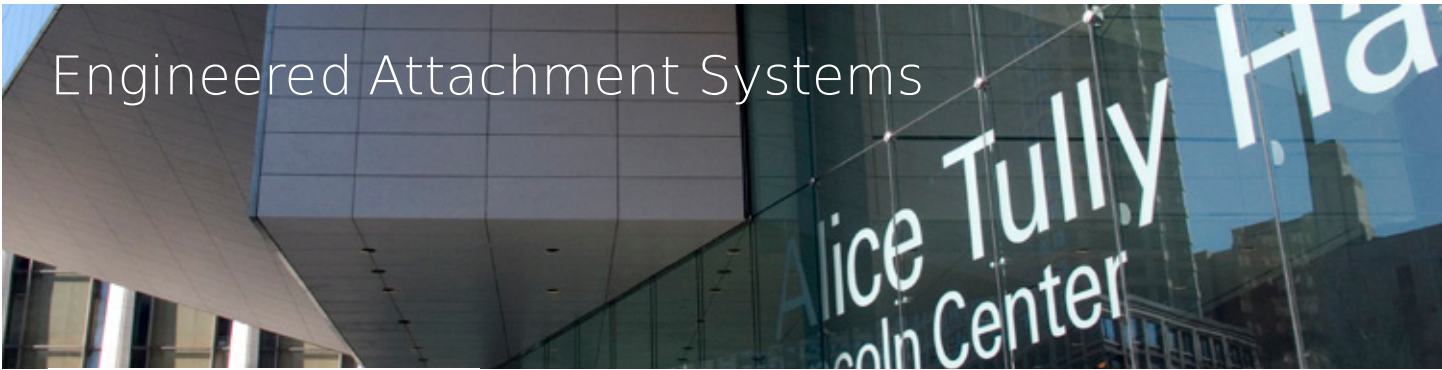
**Thermal Enveloping** - System<sup>5</sup> assemblies offer improved thermal performance and our standard systems can accommodate up to 14" of exterior insulation

**Acoustic Improvements** - System<sup>5</sup> assemblies offer standard sound control performance using exterior insulation and variable system depths for stud wall construction

**Local Fabrication Options** - We use both local and international facilities to provide fully-fabricated panels, tailored specific to your project requirements

**Durability** - Cem<sup>5</sup> products are durable and long-lasting. With the System<sup>5</sup> approach, our goal is to provide enclosure systems with 50 - 100 year lifespans

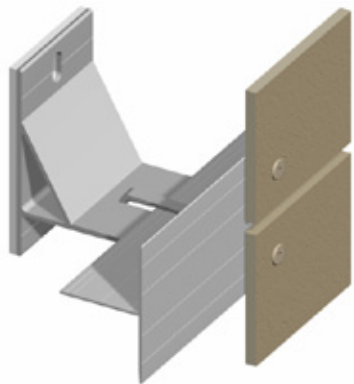
# Engineered Attachment Systems



## F2.10 SYSTEM

### VISIBLE FIXING WITH RIVETS

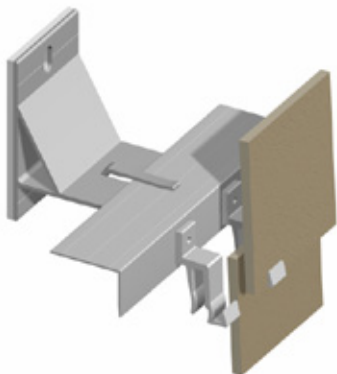
Attachment method with rivets. Ideal for masonry or stud back-up walls that require semi-rigid insulation but can also be used in non-insulated design. Rivet attachment guarantees high pull-out values and ease of installation.



## F2.11 SYSTEM

### VISIBLE FIXING WITH RIVETS

Attachment method with rivets. Can be used for concrete or stud back-up walls when minimal cavity space is desirable. Ideal for portrait oriented panels and economical over stud wall assemblies. Rivet attachment guarantees high pull-out values and ease of installation.



## F2.14 SYSTEM

### LAP-SIDING WITH CLIPS

Semi-concealed fixing for lap-siding applications. Unique clip system devised for fixing fibercement panels in a lap-siding configuration. Mechanically fastened clips and variable depth brackets with simple horizontal L-profiles make this system an economical solution for lap-siding applications.

As an industry-leader in drained and back-ventilated rainscreen design, Cladding Corp offers a variety of engineered attachment systems for fibercement cladding applications. Cladding Corp's System<sup>5</sup> engineered solutions offer designers and contractors alike "project specific" support to facilitate modern architectural design with advanced engineered attachment solutions.





Sempra Energy Trading Company - Stamford, CT / Roger Ferris + Partners

TERRY WIECKERT

WASHINGTON, DC  
MIAMI, FL  
SAN DIEGO, CA  
WICHITA, KS

**888.826.8453**  
info@claddingcorp.com  
www.claddingcorp.com

**CLADDING CORP**