

tayco.
work well.™

tayco.
work well.™

office furniture
in your comfort zone.
www.tayco.com



cosmopolitan
systems

WORK WELL IS A TRADEMARK OF TAYCO PANELINK LTD. ALL RIGHTS RESERVED.
SEPTEMBER 2007, REVISION 1, TPL-MKT-02-335
PRINTED IN CANADA



From the first impression to the daily routine
- sophistication and reliability always work well.

That's Cosmopolitan. A step up from the expected.

Good looks are in the details

Distinctive finishes, customizable panels and designer fabric selections give people the impression that Cosmopolitan is where you arrive. Ideal for private offices, reception areas, open-plan offices, touch-down spaces, team environments and call centers, Cosmopolitan is outfitted to diversify any portfolio.

It's elemental

Laminate worksurfaces are available in various shapes, colors and sizes to suit individual needs and tastes. Cosmopolitan tiles also offer versatility and can be finished with tackable fabrics, glazing, perforated metal, accessory bars, whiteboard or veneer. For added flexibility, Cosmopolitan is easily partnered with Tayco's mobile line, Go.

A place for things

Storage possibilities are endless. Spacious cabinetry, pencil drawers, overhead storage bins and shelves, hang-on accessories, and freestanding and mobile pedestals all work together to provide organizing solutions that fit.

RECEPTION STATION

Finishes

Veneer Tiles: B100 Congo stain

Glazed Tiles: G135 Fluted

Worksurface: L124 Opal Laminate with matching edge trim

Metal Panel Trim: P117 Espresso Sparkle

Seating Fabric: Leather; 23L Bone





Choose the way it works

Stackable tiles allow for privacy between workstations while maintaining an open-concept feel, so modifying space plans is seamless and simple. Studio worksurfaces lend ample space for teamwork.

Mobile pedestals are complementary to the overall look of Cosmopolitan and are crafted with padded fabric cushions for additional guest seating.

PROFESSIONAL WORKSTATION

Finishes

Fabric Tiles: Lilypad; 2003 Squash, Lilypad; 2013 Latte

Metal Tiles: P117 Espresso Sparkle Perforated Metal

Glazed Tiles: Frosted and Fluted

Worksurface: L124 Opal Laminate with matching edge trim

Metal Panel Trim: P117 Espresso Sparkle

Pedestals Seats: Intarsia; 442 Rosebud

Seating Fabric: Moguls; 253 Coffee Bean

Handle Style: Humber; P112 Silver



A feature unique to Cosmopolitan, the access door discreetly conceals wires, opens easily with one hand and stays open while access is required.

Height-adjustable keyboard trays provide ergonomic support for multi-task applications.

Engineered for durability.
Cosmopolitan makes a statement.

Under-worksurface combination pedestal resolves filing needs and safely stores personal items.





Arriving in style

For managers and executives, a Cosmopolitan office suite is privacy with an open-door policy. A combination of glazed and fabric acoustic panels offers discretion and style simultaneously. To complement the feel of openness, peninsula worksurface accommodates casual meetings or provides ample space for projects and documents.

PRIVATE OFFICE FINISHES

Finishes

Fabric Tiles: Lilypad; 2003 Squash, Lilypad; 2013 Latte

Glazed Tiles: G133 Clear, G135 Fluted

Worksurface: L100 Congo Laminate with matching Gothic edge trim

Metal Panel Trim: P117 Espresso Sparkle

Storage: L100 Congo Laminate with matching edge trim

Seating Fabric: Leather; 23L Bone

Handle Style: Humber; P112 Silver

Ask for privacy without saying a word.
The sliding-door saves space in comparison
to traditional swing doors.



Open and inviting.
Cosmopolitan treats everybody well.

As an optional executive feature, Cosmopolitan offers 1.5" thick worksurfaces with three edge trim styles including Straight, Wave and Gothic.



A group effort

Offering a functional team space, Cosmopolitan offers overhead cabinets, shelves and hang-on accessory tiles that make space sharing convenient and simple. U-tables are efficient space savers and encourage discussion between team members. Modern perforated metal tiles allow for airflow while providing a unique architectural element.

TEAMING WORKSTATIONS

Finishes

Fabric Tiles: Everest; 2002 Yeti

Metal Tiles: P110 Polished Metal Perforated Metal

Glazed Tiles: G132 Frosted

Worksurface: L104 Maple Laminate with matching edge trim

Panel Trim: P110 Polished Metal

Metal Panel Trim: P112 Silver

Storage: L104 Maple Laminate with matching edge trim

Seating Fabric: Martini; 413 Pimento

Handle Style: Rosedale; P112 Silver



Treat the team well.
With every detail.

Various storage cabinets are available with laminate or glazed doors and are offered with bookshelves, filing, coat rods and combinations. A pneumatic slide on the overhead flipper cabinet allows doors to come down slowly and quietly.

Stack-on panels in heights of 8, 16, and 24-inches alignment panels up to 110-inches high, allowing for quick and easy modification of privacy requirements.





A modern take on tradition

Useful in modern call-center applications or studio environments, Cosmopolitan's 120-degree configuration is ideal for when communication drives daily business. This unique configuration accommodates and promotes productivity while acting as a functional work area. Grommets discreetly bring wires up to worksurface level.

TEAMING CONFIGURATION

Finishes

- Metal Tiles: P115 Ginger Perforated Metal
- Glazed Tiles: G135 Fluted
- Worksurface: L121 White Laminate with matching edge trim
- Metal Panel Trim: P115 Ginger
- Storage: L110 Electrum Laminate with matching edge trim
- Seating Fabric: Moguls; 273 Mushroom
- Handle Style: Manhattan; P112 Silver

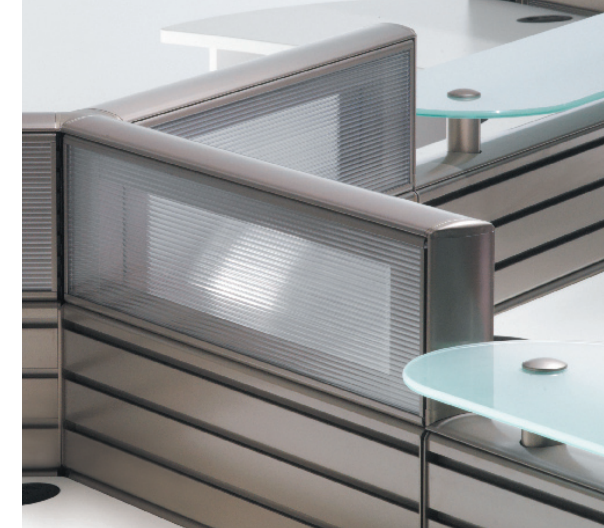


Mobile CPU Unit allows for easy mobility within the workstation.

Make the right call.
Cosmopolitan.

Electrical receptacles can be housed at the baseline to remain discreet. Panels accommodate up to 168 internal cables using vertical and horizontal wire management capabilities.

Stack-on translucent tiles provide seated privacy and access to natural light. Shared transaction tops support interaction among team members.





Space simplified

Cosmopolitan monolithic panels boast innovative design and engineering, with a value-driven promise. Crafted to be environmentally sound, panels use eco-friendly, water-based adhesives and powder coat paints. Easily reconfigured, Cosmopolitan monolithic panels accommodate a growing work force, maximize the furniture investment, and reduce overall environmental waste. In addition, clean and simple lines are complementary to any existing infrastructure.

PROFESSIONAL WORKSTATION

- Finishes
- Fabric Tiles: Crosstown 2542 Sterling
- Glazed Tiles: G133 Clear
- Worksurface: L121 White with matching edge trim
- Metal Panel Trim: P112 Silver
- Storage: L122 Orbit with matching edge trim
- Seating Fabric: Teknit 806 Eggplant
- Handle Style: Manhattan; P112 Silver

Glazed tiles in 8, 16, and 24-inch heights increase visibility and provide access to natural light.



Cosmopolitan monolithic tiles are acoustical, tackable and seamlessly integrate with Cosmopolitan's entire product offering.

Cosmopolitan monolithic panel.
Minimum cost. Maximum appeal.

Cosmopolitan monolithic panel.
 Features that work.
 Benefits that speak for themselves.

FEATURES

- All monolithic tiles are acoustical, tackable, and seamlessly integrate with Cosmopolitan's entire offering
- Metal to metal panel connections, aluminum top caps, fillers, end-posts, and metal base raceway
- 3¹/₄-inch panel thickness
- All metal components are finished with powder coat paints
- Water-based adhesives are used
- Tiles are 98% recyclable
- Ability to add double pane glazed tiles in 8, 16, and 24-inch heights
- Includes a range of environmentally friendly fabrics that are produced with no harmful dyes or chemicals
- Stackable, load-bearing frames
- Panels are shipped complete with tiles installed
- Panels accommodate 168 cables in the base-line raceway

BENEFITS

- One tile is capable of multiple purposes, ultimately reducing inventory and cost of ownership
- Offers structural support, integrity, and durability
- Significantly reduces waste
- Promotes healthy indoor air quality
- Minimal impact on the environment
- Increases visibility and access to natural light
- Offers a better sound rating than single pane
- Greatly reduces impact on the environment
- Flexibility to reconfigure as privacy requirements change
- Accommodates mounted storage
- Increases accuracy and reduced time of installation
- Superior wire management capacities

