

Go with the curve!

# Curve - Corners for Drywall

The easiest way to create  
tight curved corners:  
90 degree Internal Corners  
90 degree External Corners  
180 degree End-caps



Improves room aesthetics

- Eliminates cleaning dead-spots
- Increases corner insulation
- Reduces paint chipping on corners
- Eases traffic
- Installs and finishes like drywall
- 

Standard drywall thickness (1/2"  
& 5/8")  
Areal weight 80% less than  
drywall



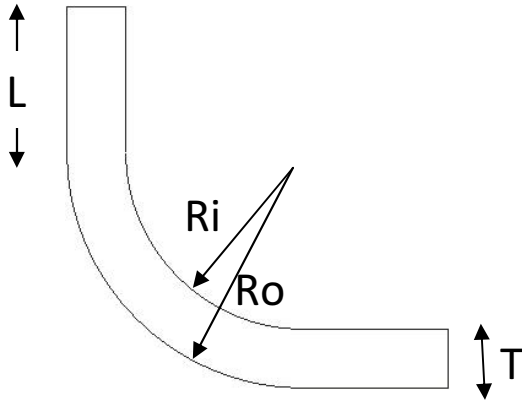
**Fulcrum Composites, Inc.**  
1407 E. Grove St.  
Midland, MI 48640

**Ph: 989-636-1025**  
**Fax: 989-837-1566**

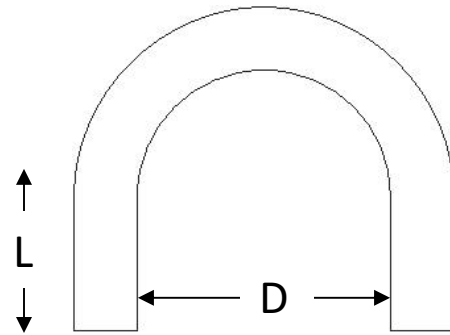
[www.fulcrumcomposites.com/curve.html](http://www.fulcrumcomposites.com/curve.html)  
[info@fulcrumcomposites.com](mailto:info@fulcrumcomposites.com)

Go with the curve!

### 90 Degree Corners



### 180 Degree End Cap



90 Degree Corner	L	Ri	Ro	T
Internal	2 ¼"	4"		½" or 5/8"
External	2 ¼"		8 1/2"	½" or 5/8"

180 Degree End Cap	L	D	T
2x4 Stud	2 ¼"	3 ½"	½" or 5/8"
3 5/8" Metal			½" or 5/8"

Specify with or without taper to match drywall

If you don't see the dimensions you require – Call us

We'd love to create it for you!

**Fulcrum Composites, Inc.**  
 1407 E. Grove St.  
 Midland, MI 48640

**Ph: 989-636-1025**  
**Fax: 989-837-1566**  
[www.fulcrumcomposites.com/curve.html](http://www.fulcrumcomposites.com/curve.html)  
[info@fulcrumcomposites.com](mailto:info@fulcrumcomposites.com)

Go with the curve!



Install like drywall



Tape & Mud like drywall



Finish & Prime like drywall



Paint like drywall

**Fulcrum Composites, Inc.**  
1407 E. Grove St.  
Midland, MI 48640

**Ph: 989-636-1025**  
**Fax: 989-837-1566**  
[www.fulcrumcomposites.com/curve.html](http://www.fulcrumcomposites.com/curve.html)  
[info@fulcrumcomposites.com](mailto:info@fulcrumcomposites.com)

Go with the curve!

## Installation and Usage Tips

- Corners and endcaps have 2 1/4" straights from the curve to fit the middle of a double stud
- Use depth-set drywall screws. Installation torque will be lower than standard drywall
- If it is necessary to cut:  
Preferably use a table saw with a fence and a sharp blade  
Can also cut with a sharp utility knife. Cut through BOTH skins
- Avoid peeling skins away from core
- Avoid denting edges
- Install corners first if possible
- Tape, mud, finish and paint like drywall
- Drywall products and techniques vary significantly. We strongly recommend that you experiment with your intended finishing system to ensure satisfactory results before implementing on a project.

## Environmental Benefits

- Insulation value  
R 5/in (drywall is R 0.9/in)
- Improves corner insulation where most heat is lost
- Lightweight  
0.3lbs/sqft (drywall is 1.7lbs/sqft)  
Reduced transport energy
- Lower embodied energy
- Space saving  
Easing outside corners may allow reduced corridor width
- Reduces corner chips and dings  
Less frequent painting  
Less waste
- Corners are supplied to size, reducing offcuts
- Less scrap from breakage in bending drywall to tight radii

This product is not fire rated and should not be used as part of a fire barrier  
Not be used as a load bearing structure  
Always consult local building codes

**Fulcrum Composites, Inc.**  
1407 E. Grove St.  
Midland, MI 48640

**Ph: 989-636-1025**  
**Fax: 989-837-1566**  
[www.fulcrumcomposites.com/curve.html](http://www.fulcrumcomposites.com/curve.html)  
[info@fulcrumcomposites.com](mailto:info@fulcrumcomposites.com)