



Manufacturer
Of
Architectural
And
Commercial
Grade
Windows,
Curtain Walls,
Entrances,
And
Storefronts

EFCO CORPORATION
1000 COUNTY RD
MONETT, MO 65708
800.221.4169



Series 3005 Non-Thermal • Series 3007 Non-Thermal 4 1/2" Heavy Commercial Sliding Glass Door

Configurations XO • OX • OXXO • OXOR • OXOL • Fixed

Series 3005 retains an AAMA Heavy Commercial and Architectural Grade rating to meet the most demanding specifications. The 3005 is an attractive product for a wide range of applications. Multiple glazing options provide flexibility to meet specific design requirements. Offered with a complete line of sub frames, mullions and architectural sills, series 3005 provides the complete solution for your fenestration needs.

Features

Heavy-duty meeting rails

Cam sash design and continuous interlock meeting rails

Sash glides on adjustable tandem steel ball bearing rollers

Raised sill track

Glazing depths of 1/4" or 1" are accommodated

Heavy-duty screen door frames are extruded aluminum alloy with rollers at the head

Anodized or painted finishes available

Benefits

Offers superior structural performance

Yields superior air, water, and structural performance

Allows easier operation

Minimizes the effects of debris and dirt buildup on the sill

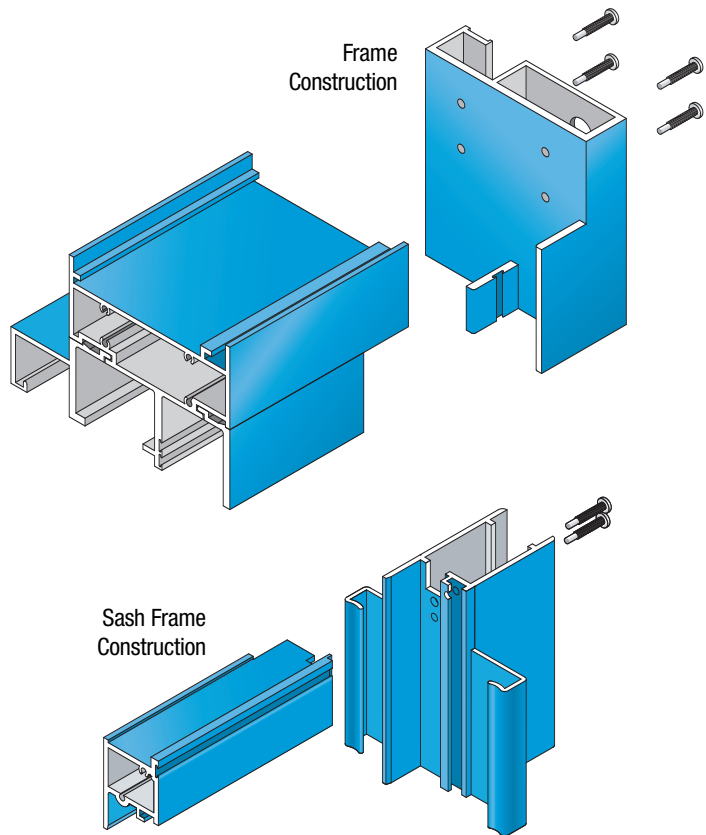
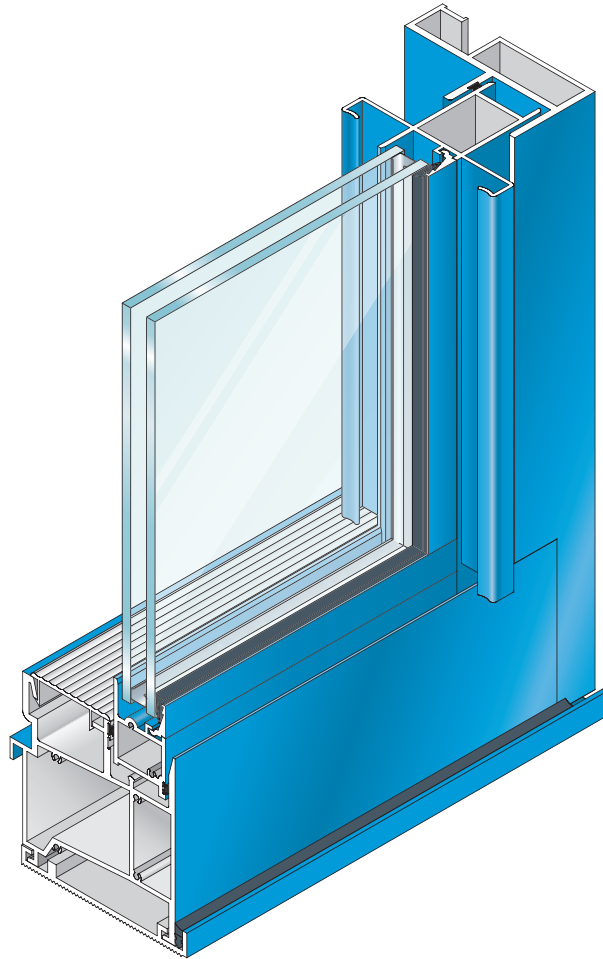
Allows 1" thick insulated units

Stronger, more durable screens
Operation is not hindered by debris and dirt build-up on the sill

Unlimited options to answer economic and aesthetic concerns



Series 3005 Non-Thermal • Series 3007 Non-Thermal 4 1/2" Heavy Commercial Sliding Glass Door



Performance Data

S-3005 Sliding Glass Door (with steel reinforcement)

AAMA Rating (NAFS-02)	SGD-HC150
Air Infiltration	<.10 cfm/sf @ 6.24 psf
Water	No Leakage @ 15.0 psf
Structural	±225.0 psf

S-3005 Architectural Grade Sliding Glass Door (without steel reinforcement)

AAMA Rating (101-93)	SGD-AW80
Air Infiltration	<.10 cfm/sf @ 6.24 psf
Water	No Leakage @ 12.0 psf
Structural	±120.0 psf

A = Estimated values and/or designations
B = Non-standard size or configuration
C = Dual glazed
D = 1" Insulated - 1/4" clear, 1/2" air, 1/4" clear
E = 1" Insulated - 1/4" clear (Low Emissivity), 1/2" air, 1/4" clear
F = 1" Insulated - 1/4" clear (Low Emissivity), 1/2" argon, 1/4" clear
G = 1" Insulated - 1/4" clear, 1/2" air, 1/4" clear (Low Emissivity)

S-3007 Corresponding Fixed Window Heavy Commercial

AAMA Rating (101-97)	F-HC80 ^A
Air Infiltration	<.06 cfm/sf @ 6.24 psf ^A
Water	No Leakage @ 12.0 psf ^A
Structural	±120.0 psf ^A

Series 3005 Hardware Chart	Stainless Steel Dead Bolt	Interior Thumb Turn	Interior and Exterior Extruded Pull Handle	Exterior Cylinder Lock w/ Interior Thumb Turn	Stainless Steel Roller Track Cover	Adjustable Stainless Steel Ball Bearing Rollers
Door Hardware	S	S	S	O	S	S

O -Optional
S -Standard
blank - N/A

S-3005 Glazing Chart	Polycarbonate			Glass or Panel															
	1/8"	3/16"	1/4"	1/8"	.156"*	3/16"	.200"*	1/4"	1/4"*	1/2"	5/8"	3/4"	7/8"	1"	1-1/8"	1-1/4"	1-1/2"	1-3/4"	2"
Monolithic & Insulated Glass								A						A					

*-Obscure Glass Thickness
**-Laminated Glass
Thickness

A-Available Glazing Option
blank - N/A

Fixed S-3007 Glazing Chart	Polycarbonate			Glass or Panel															
	1/8"	3/16"	1/4"	1/8"	.156"	3/16"	.200"	1/4"	1/4"	1/2"	5/8"	3/4"	7/8"	1"	1-1/8"	1-1/4"	1-1/2"	1-3/4"	2"
Monolithic & Insulated Glass								A						A					

Series 3005 Non-Thermal • Series 3007 Non-Thermal 4 1/2" Heavy Commercial Sliding Glass Door



Frame Construction

The frames have a depth of 4 1/2" and are constructed of 6063-T6 aluminum alloy. Nominal material wall thickness for the frame is .125". Corners are of screw spline construction and sealed. See Illustration 1.

Sash Frame Construction

The sash consists of tubular aluminum members with .125" nominal material wall thickness of 6063-T6 alloy. Corners are of screw spline construction and sealed. Weather-stripped interlock at the sash meeting rail(s) is standard. This offers superior weathering and structural performance. See Illustration 2.

Weather Stripping

All sash is weather-stripped with TRIPLE FIN®.

Screens

Screen frames are extruded 6063-T6 aluminum alloy with lock. 18 x 16 mesh screens are available in fiber-glass and .011" diameter aluminum. 18 x 18 mesh screens are available in .009" diameter stainless steel.

Hardware

Standard locking hardware is Sash Controls dead lock. The sash glides on a pair of tandem rollers over a raised track, minimizing the effects of dust and dirt build-up. See the Hardware Chart for available hardware types.

Glazing

Doors are inside glazed with an extruded aluminum snap-in glazing bead and drive-in wedge gasket. Glazings of 1/4" or 1" are accommodated.

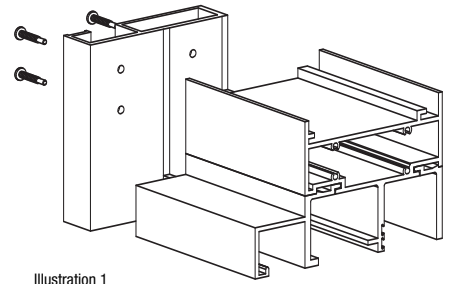


Illustration 1

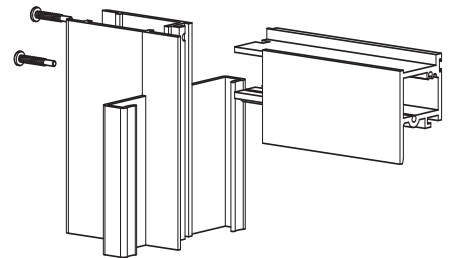
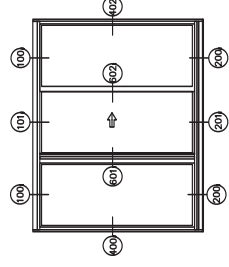
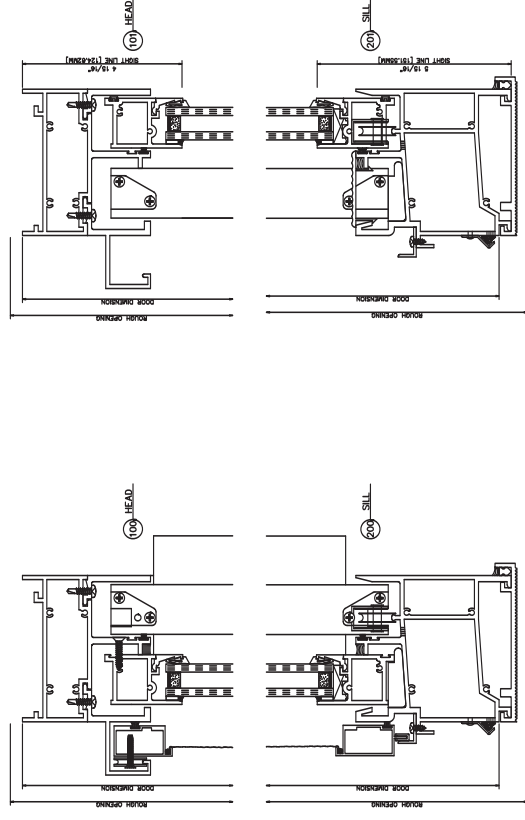
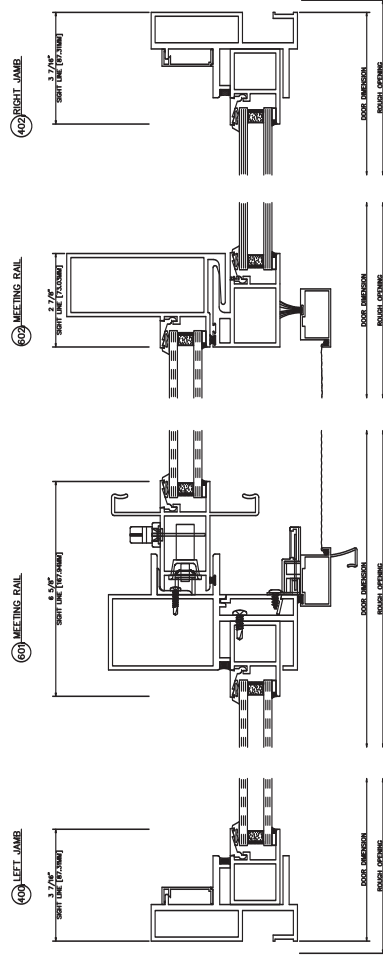
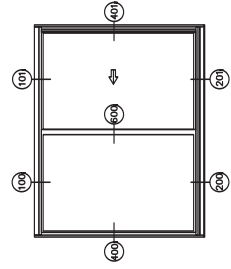
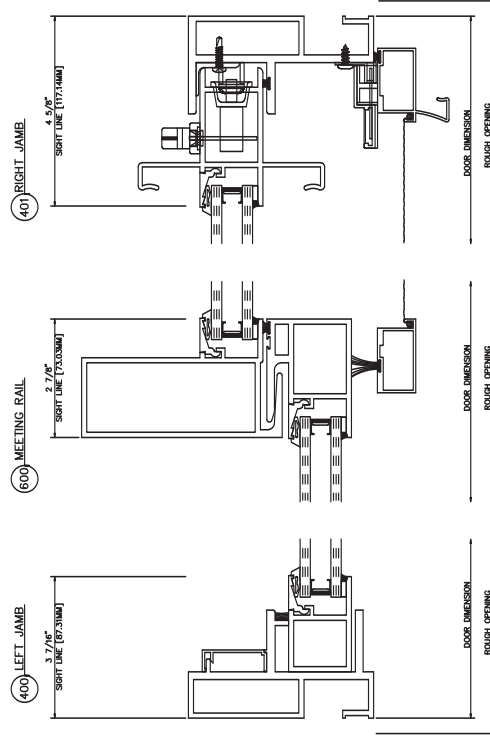
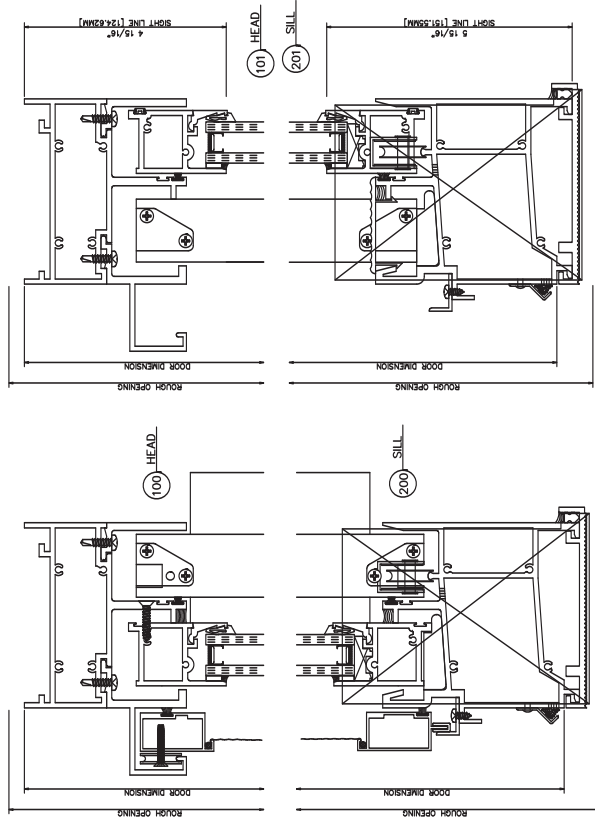
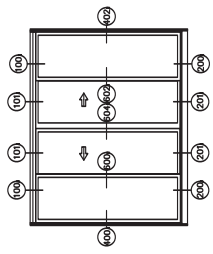
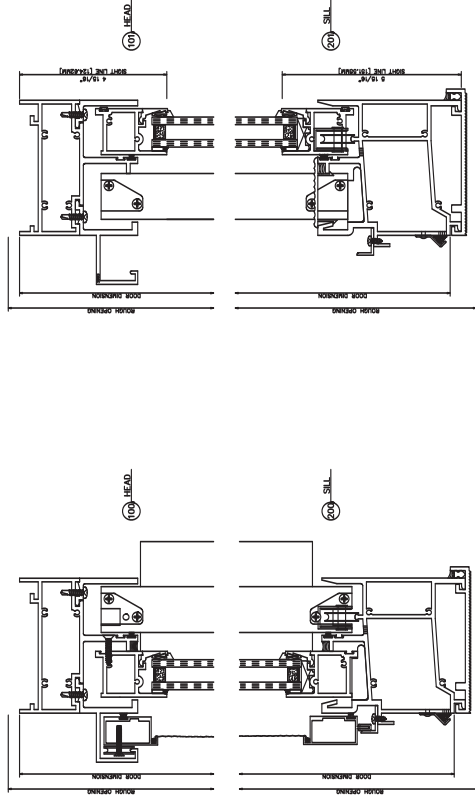
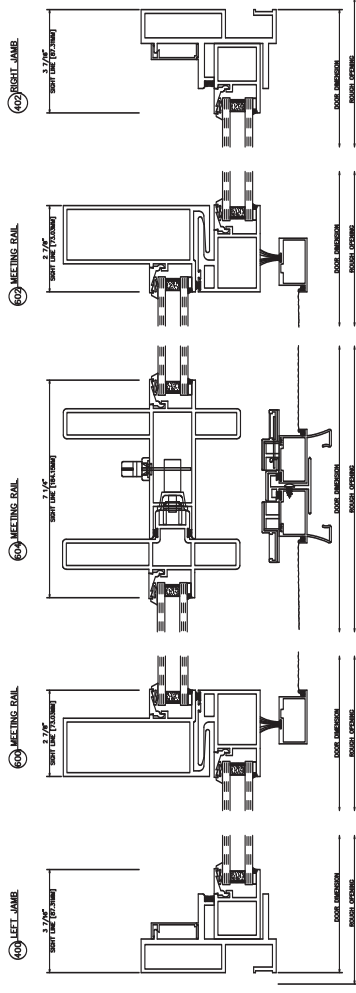


Illustration 2

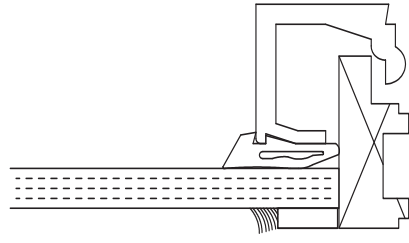


3005 OXXO

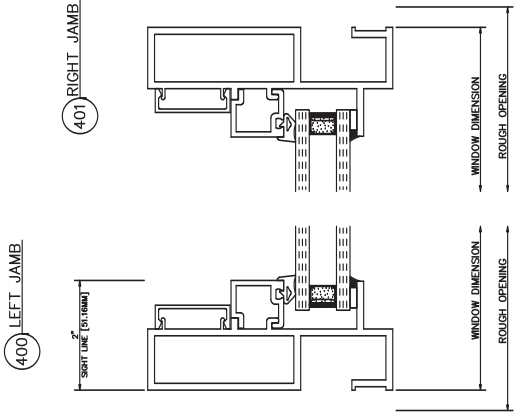
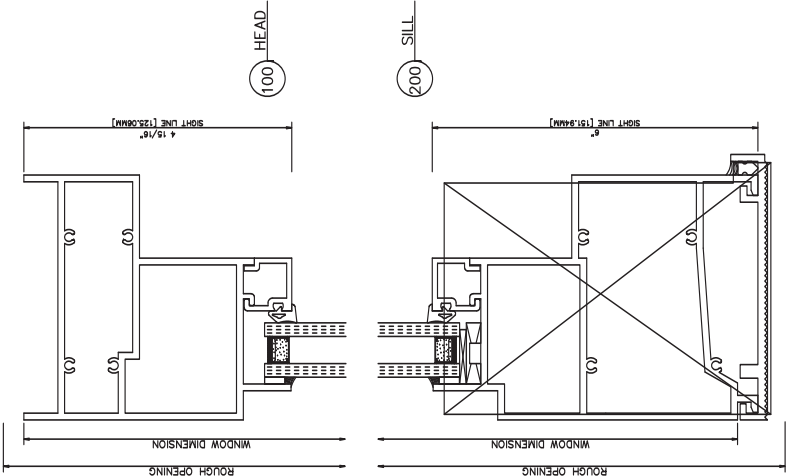
Inside Glazed



1/4" MONOLITHIC



3005 Glazing



1/4"
MONOLITHIC

