

IMPACT GRADE



## ***Series T350 Stile • Series T400 Stile • T450 Stile 2 1/4" Terrastile™ Entrance Doors***

Manufacturer  
Of  
Architectural  
And  
Commercial  
Grade  
Windows,  
Curtain Walls,  
Entrances,  
And  
Storefronts

### ***Configurations*** Single leaf - Inswing or Outswing • Pair - Outswing

You can find a combination of beautiful style and durability in this quality terrace door. EFCO Terrastile doors are ideal for high rise residential, condominiums and hotels, and are designed for ease of operation without compromising security and performance. Also, the E-Strut™ thermal isolators in the stile rails and frame allow dual finish capability.

### ***Features***

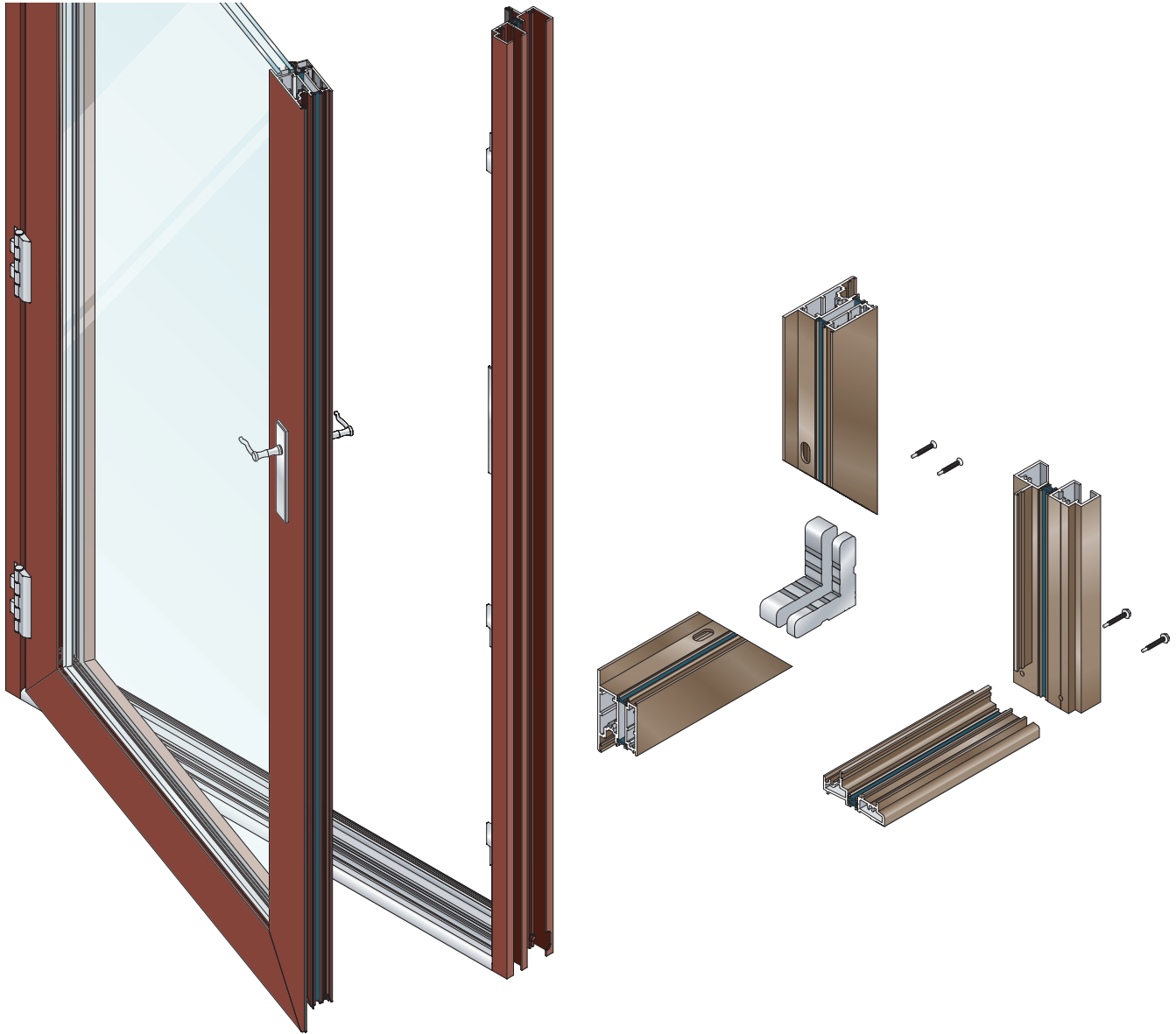
### ***Benefits***

Four custom aluminum extruded hinges on each door leaf	Smooth door motion Easy to operate Improves durability in applications such as hotels and condominiums
Available as single door or pair, with out-swing or in-swing motion	Accommodates multiple design options
Mitered corner construction on each door leaf and multi-point locking hardware (300 Series stainless steel)	Exceptional durability for high-quality applications
E-Strut™ thermal isolator	Dual finish capability Improved thermal performance
Solid brass forged handles and face plates available in various finishes	Options to address aesthetic concerns Dependable hardware operation
Stainless steel hardware is available	Provides excellent resistance to corrosion abrasion and scratches
Accommodates up to 1" glazing	Flexibility in design requirements for glazing
Anodized and painted finishes available	Unlimited options to answer economic and aesthetic concerns

EFCO CORPORATION  
1000 COUNTY RD  
MONETT, MO 65708  
800.221.4169



Series T350 Stile • Series T400 Stile • T450 Stile  
2 1/4" Terrastile Entrance Doors



Performance Data

Single Outswing Door	
AAMA Rating (NAFS-02)	HGD-HC55
Air Infiltration	<.10 cfm/sf @ 6.24 psf
Water	No Leakage @ 15.0 psf
Structural	±82.5 psf
CRF Frame (1503.1)	52 <sup>D</sup>
CRF Glass (1503.1)	61 <sup>D</sup>
U-Value (1503.1)	.56 <sup>D</sup>

Single Inswing Door	
AAMA Rating (101-97)	HGD-HC40 <sup>A</sup>
Air Infiltration	<.10 cfm/sf @ 6.24 <sup>A</sup> psf
Water	No Leakage @ 6.0 <sup>A</sup> psf
Structural	±60.0 <sup>A</sup> psf
CRF Frame (1503.1)	52 <sup>A, D</sup>
CRF Glass (1503.1)	61 <sup>A, D</sup>
U-Value (1503.1)	.56 <sup>A, D</sup>

A = Estimated values and/or designations  
B = Non-standard size or configuration  
C = Dual glazed  
D = 1" Insulated - 1/4" clear, 1/2" air, 1/4" clear  
E = 1" Insulated - 1/4" clear (Low Emissivity), 1/2" air, 1/4" clear  
F = 1" Insulated - 1/4" clear (Low Emissivity), 1/2" argon, 1/4" clear  
G = 1" Insulated - 1/4" clear, 1/2" air, 1/4" clear (Low Emissivity)

Pair of Outswing Doors	
AAMA Rating (101-97)	HGD-HC40
Air Infiltration	<.10 cfm/sf @ 6.24 psf
Water	No Leakage @ 8.0 psf
Structural	±60.0 psf
CRF Frame (1503.1)	52 <sup>A, D</sup>
CRF Glass (1503.1)	61 <sup>A, D</sup>
U-Value (1503.1)	.56 <sup>A, D</sup>

TerraStile Glazing Chart	Polycarbonate			Glass or Panel															
	1/8"	3/16"	1/4"	1/8"	.156**	3/16"	.200**	1/4"	1/4***	1/2"	5/8"	3/4"	7/8"	1"	1-1/8"	1-1/4"	1-1/2"	1-3/4"	2"
Monolithic & Insulated Glass														A					

\*-Obscure Glass Thickness  
\*\*-Laminated Glass  
Thickness

A-Available Glazing Option  
blank - N/A

# Series T350 Stile • Series T400 Stile • T450 Stile 2 1/4" Terrastile Entrance Doors



## Main Frame Construction

The frame is constructed from .125" nominal material wall thickness aluminum of 6063-T6 alloy with a depth of 3 1/2", 4", or 4 1/2". An equal leg frame is standard. Corners are of screw spline construction and back sealed with a small-joint seam sealer. See Illustration 1.

## Vent Frame Construction

The 2 1/4" deep vent consists of tubular aluminum members with .125" nominal material wall thickness of 6063-T6 alloy. Vent corners are mitered, angle reinforced, crimped, cold epoxy welded, and back sealed with a small-joint seam sealer. See Illustration 2.

## Weather Stripping

All vents are dual weather-stripped with a dual-durometer Santoprene® gasket. The exterior gasket is intentionally omitted at the vent bottom rail for project-out vents and at the vent top rail for project-in vents, allowing air to pressure equalize the void between the vent and frame. Each vent utilizes the pressure equalization technique for superior water resistance performance.

## Thermal Barrier

All frames and vents are thermally isolated with two thermal struts consisting of glass reinforced polyamide nylon, mechanically crimped in raceways extruded in the exterior and interior extrusions. See Illustration 3.

## Hardware

Three types of hardware styles and several color variations of activation handles are offered. Lock sets come in half sets with thumb turn inside, no lock outside, or full sets with thumb turn inside, key lock outside. All entrances use non-magnetic stainless steel multi-point locking hardware for greater design pressures and added security.

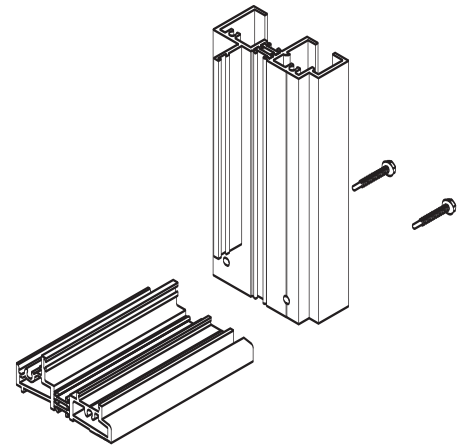


Illustration 1

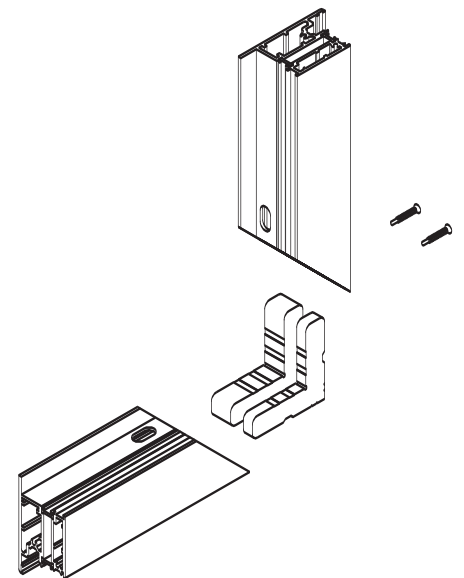


Illustration 2

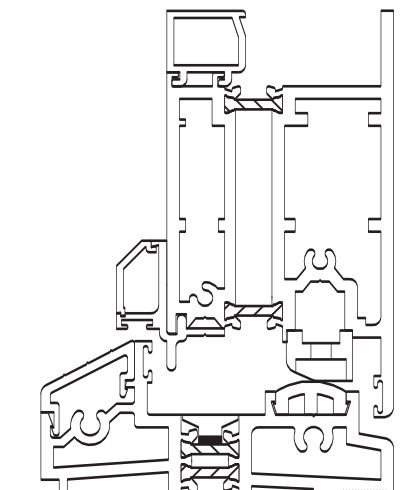
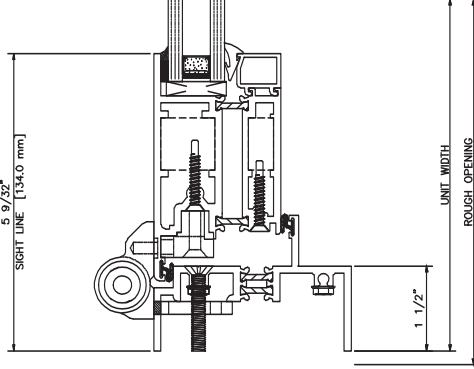
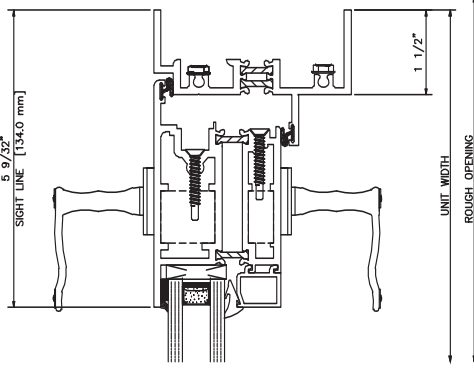


Illustration 3

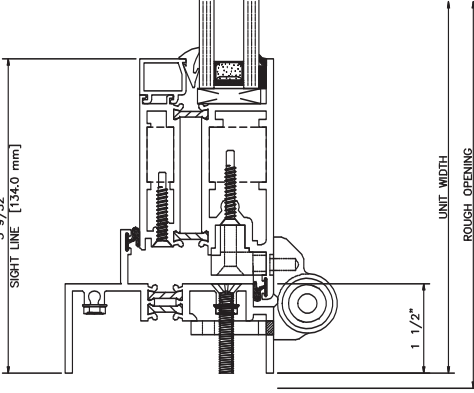
300 LEFT JAMB



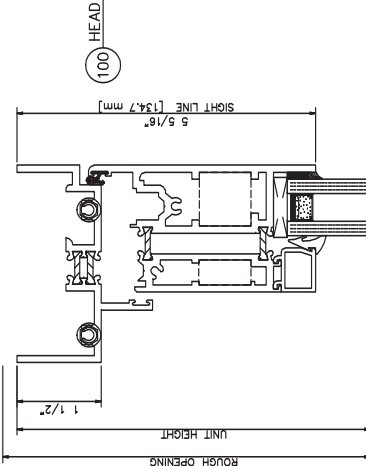
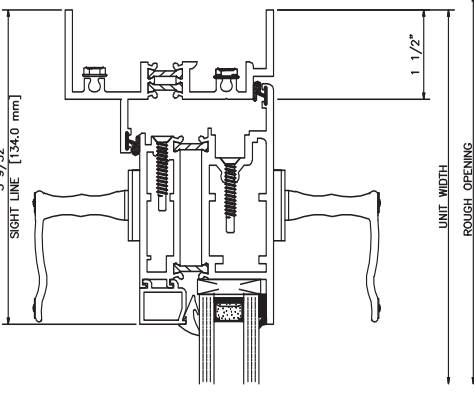
302 RIGHT JAMB



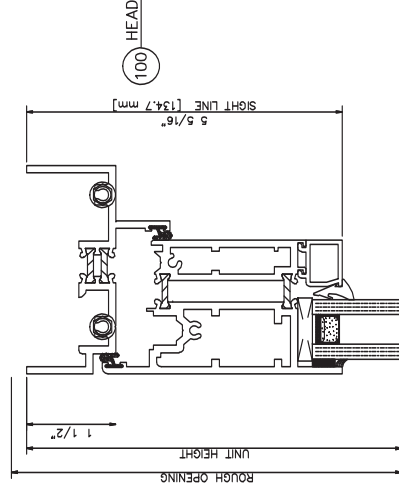
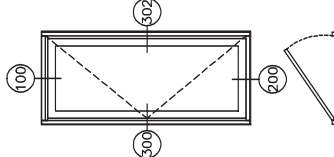
300 LEFT JAMB



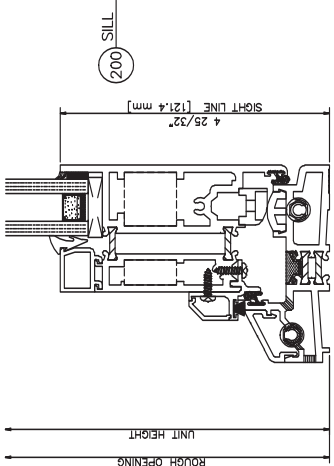
302 RIGHT JAMB



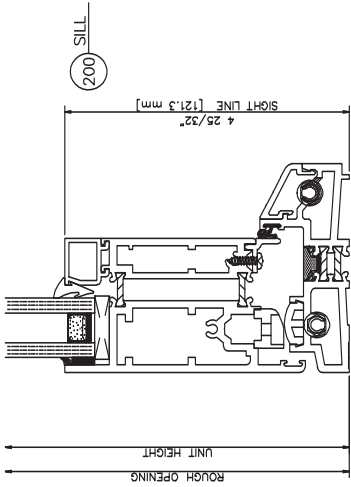
100 HEAD



100 HEAD



200 SILL



200 SILL

## T350-I Inswing

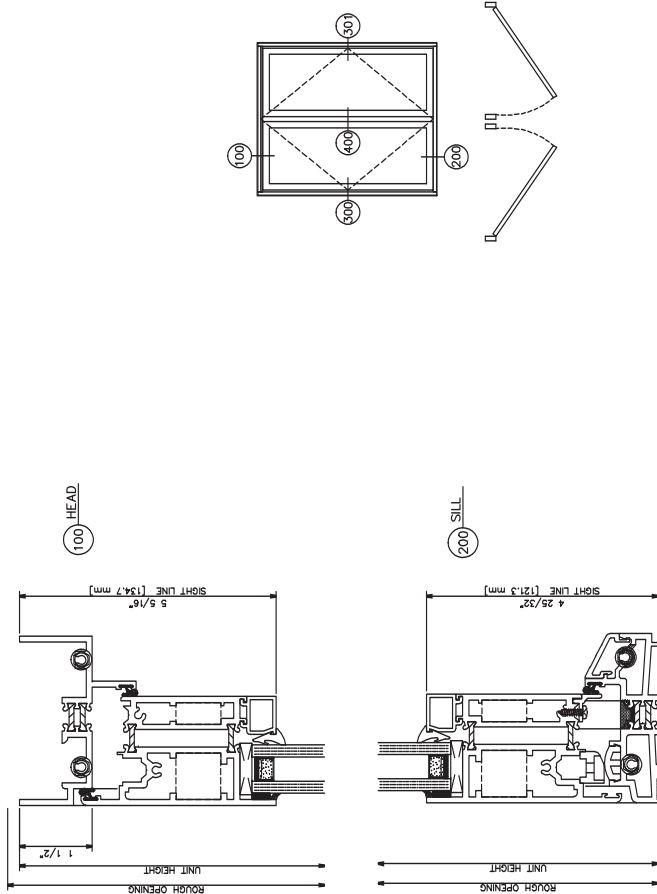
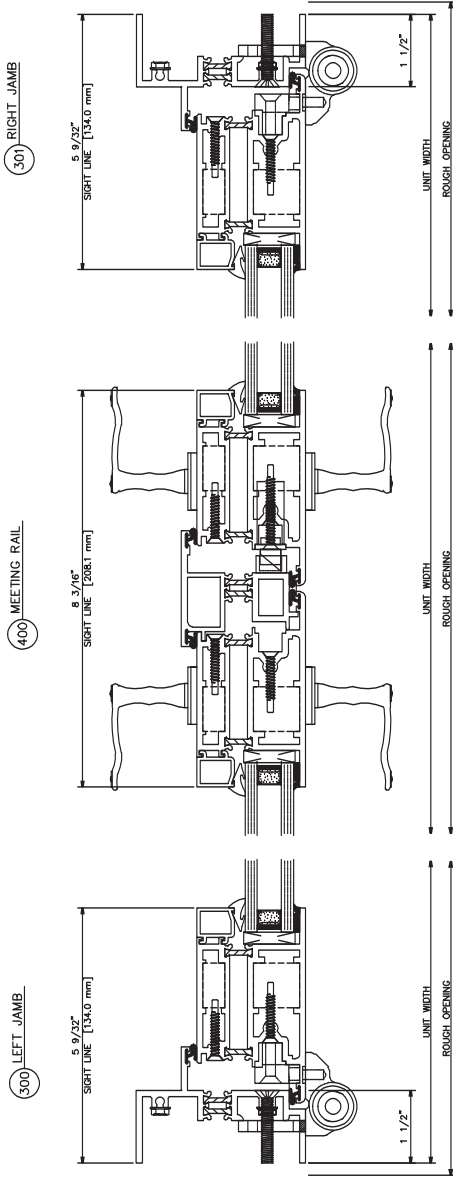
Butt Hinges • Multipoint Rolling Cam Locks

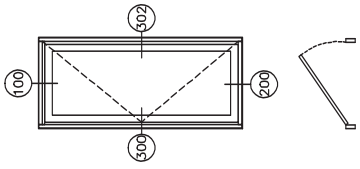
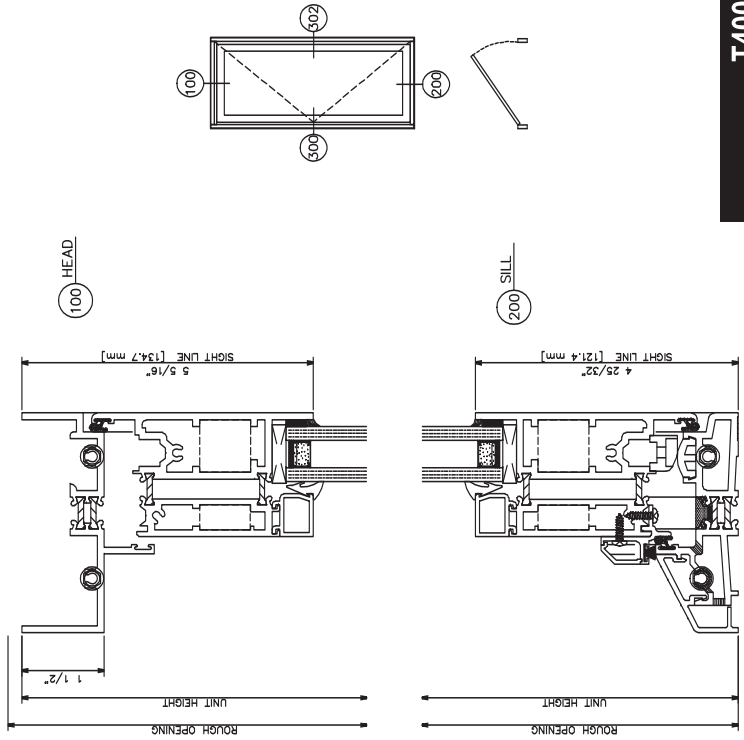
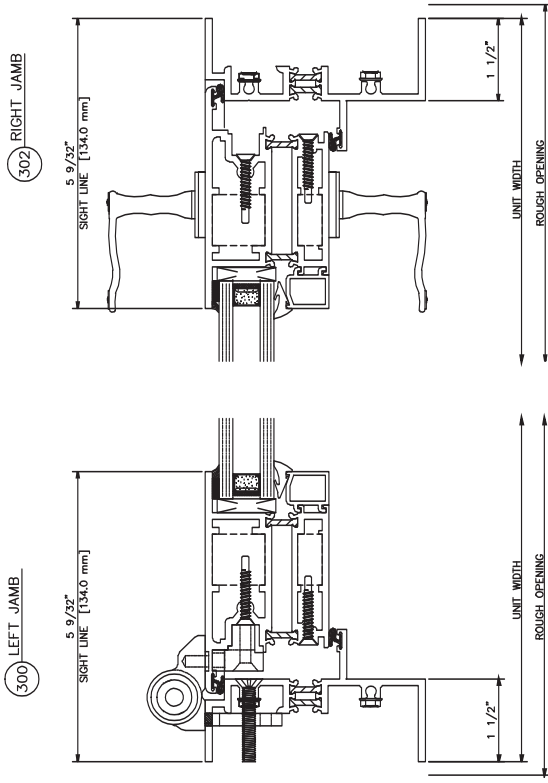
## T350-I Outswing

Butt Hinges • Multipoint Rolling Cam Locks

# T350-I Door Pair Outswinging

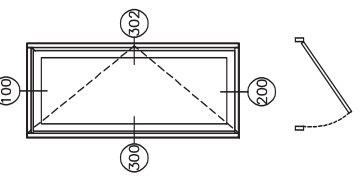
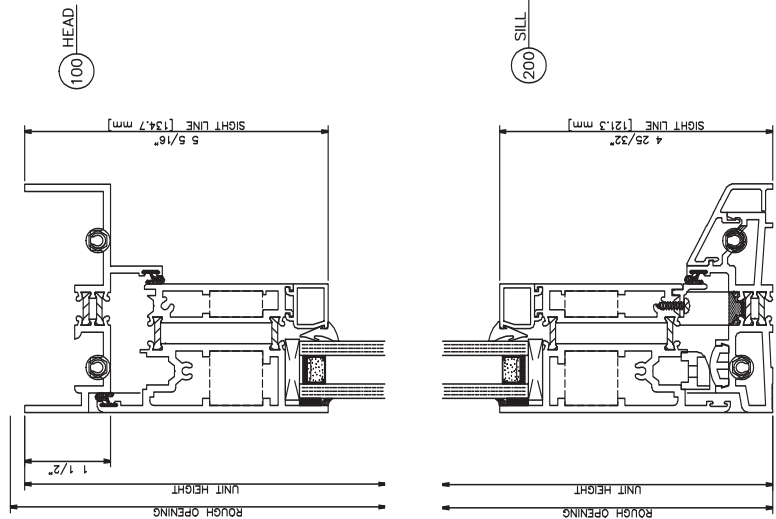
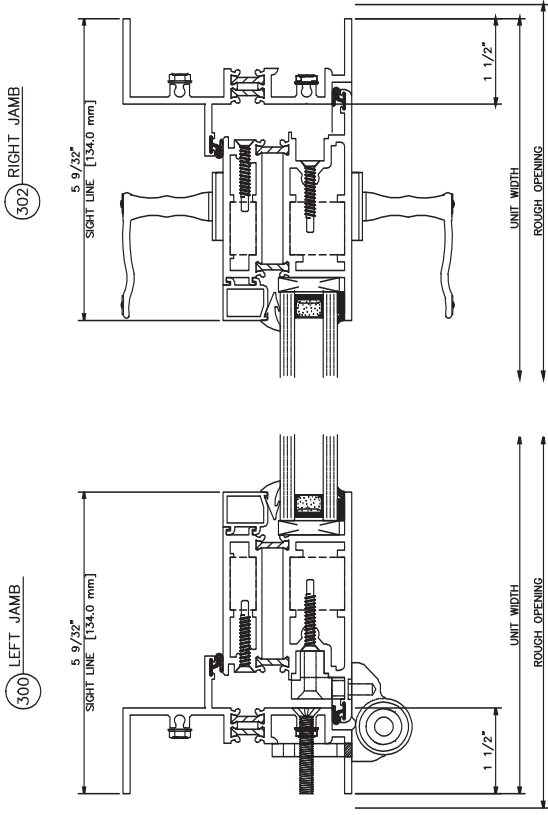
Butt Hinges • Multipoint Rolling Cam Locks





### T400-I Inswing

Butt Hinges • Multipoint Rolling Cam Locks



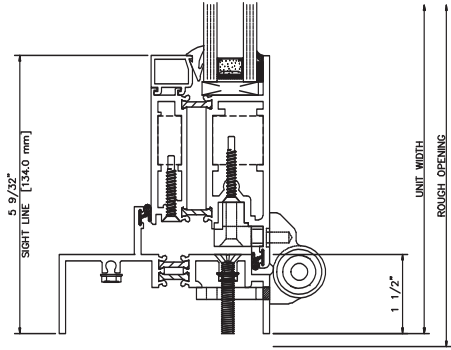
### T400-I Outswing

Butt Hinges • Multipoint Rolling Cam Locks

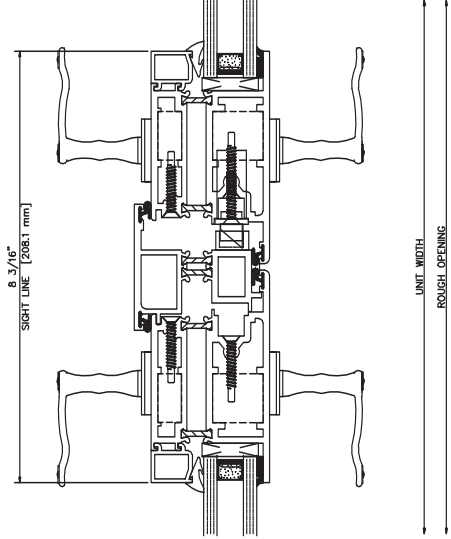
# T400-I Door Pair Outswinging

Butt Hinges • Multipoint Rolling Cam Locks

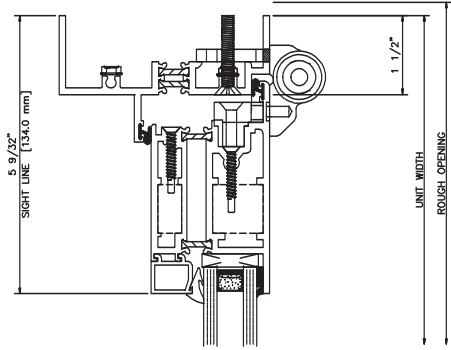
300 LEFT JAMB



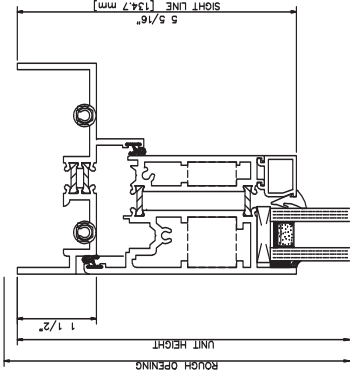
400 MEETING RAIL



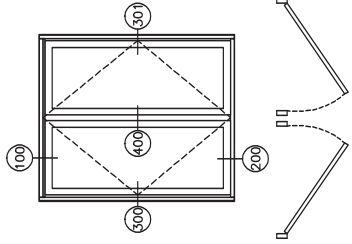
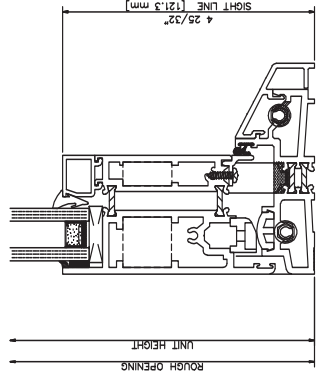
301 RIGHT JAMB

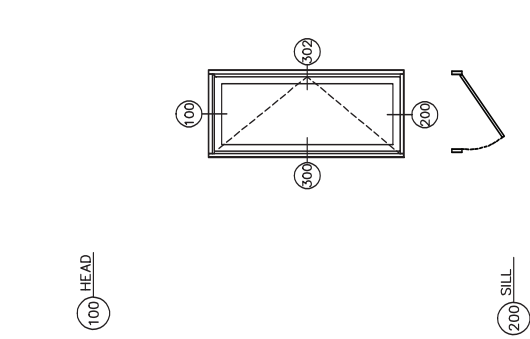
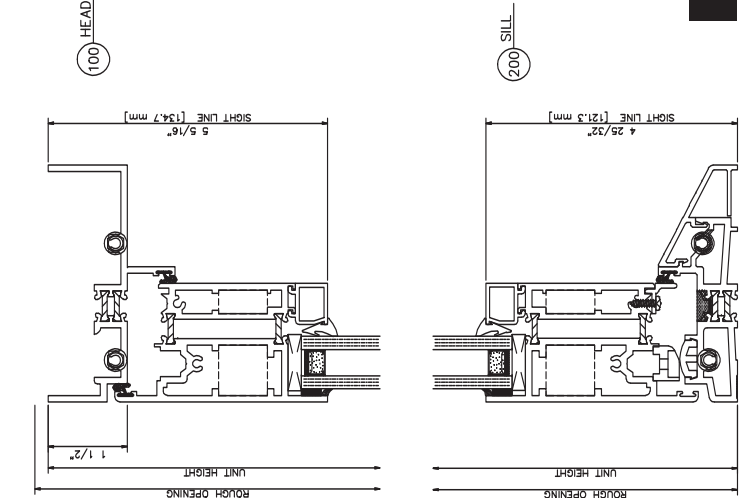
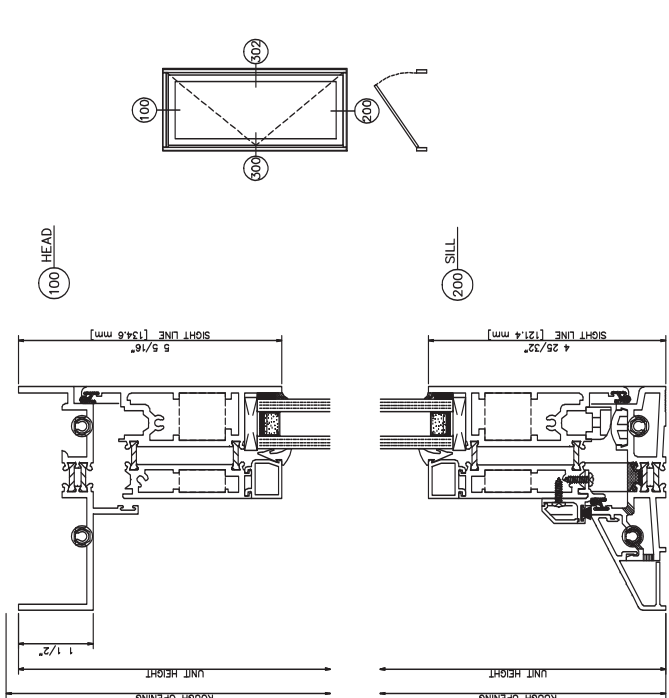
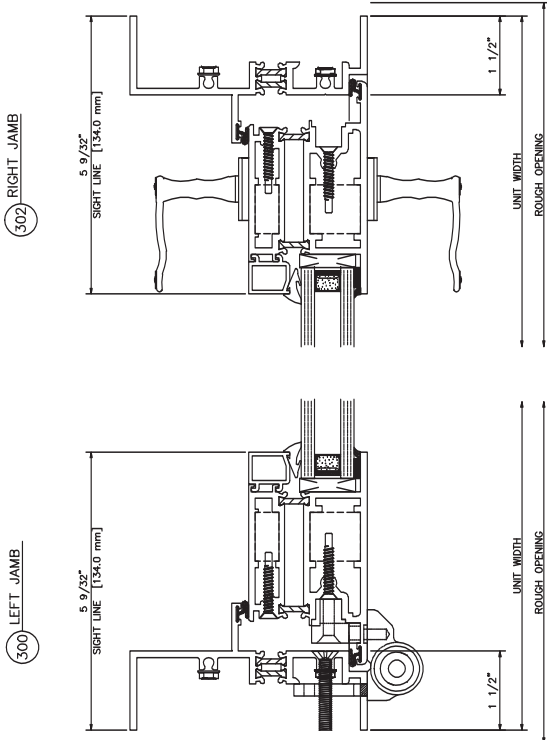


100 HEAD



200 SILL





T450-I Inswing

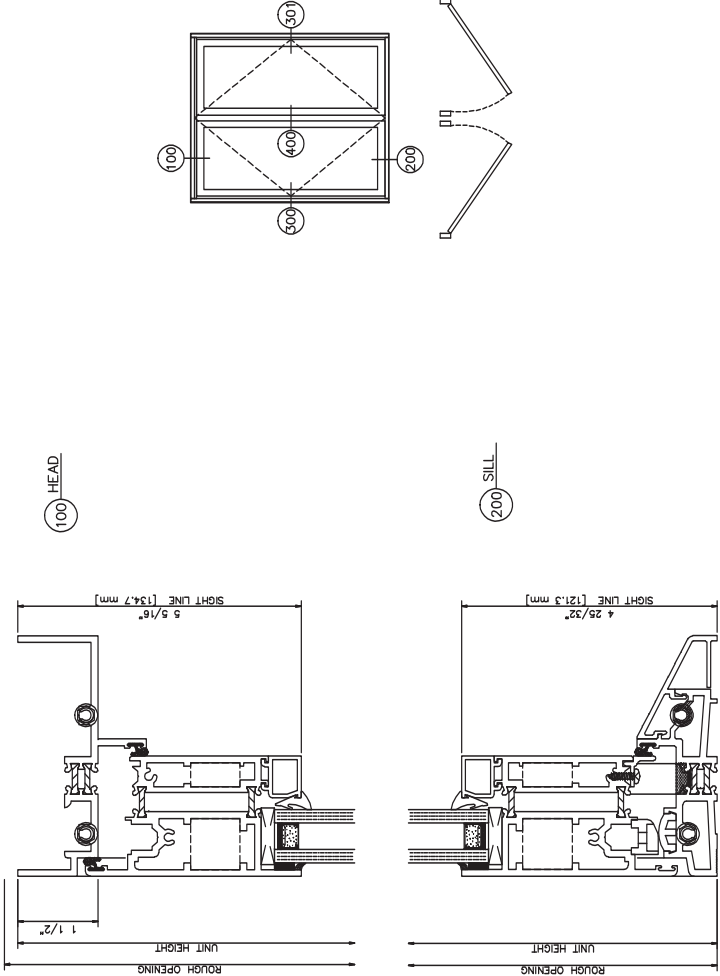
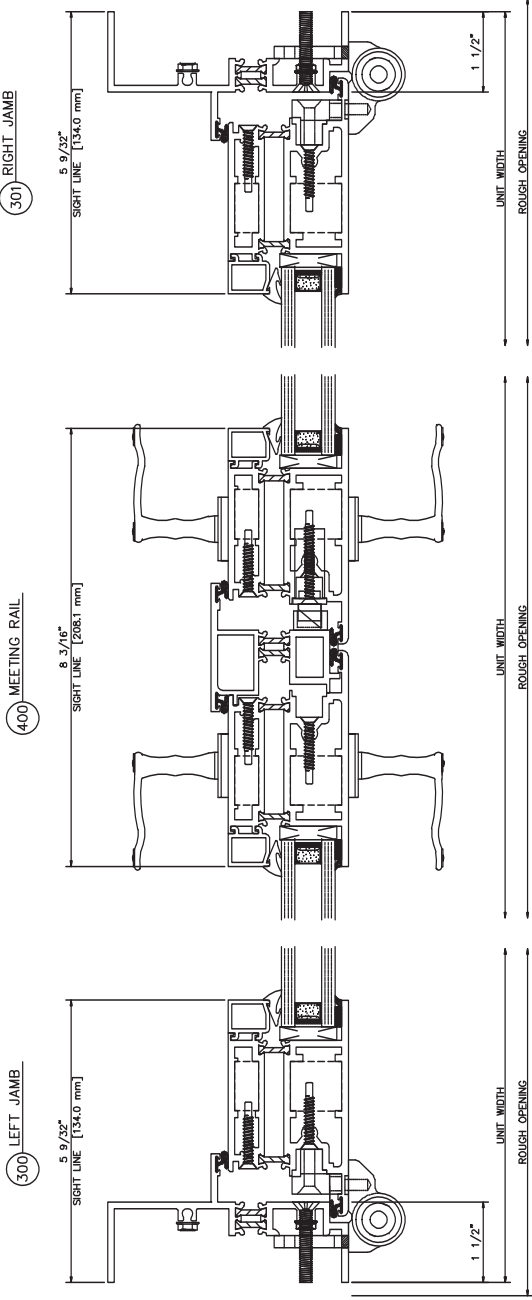
Butt Hinges • Multipoint Rolling Cam Locks

T450-I Outswing

Butt Hinges • Multipoint Rolling Cam Locks



**T450-I Door Pair Outswing**  
 Butt Hinges • Multipoint Rolling Cam Locks



7/8" GLASS WITH 11K0  
PERIMETER GRID  
OUTSWING ONLY

