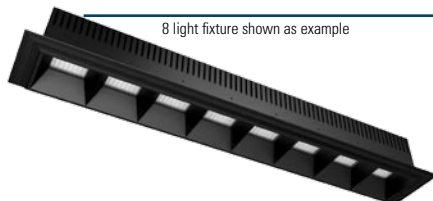
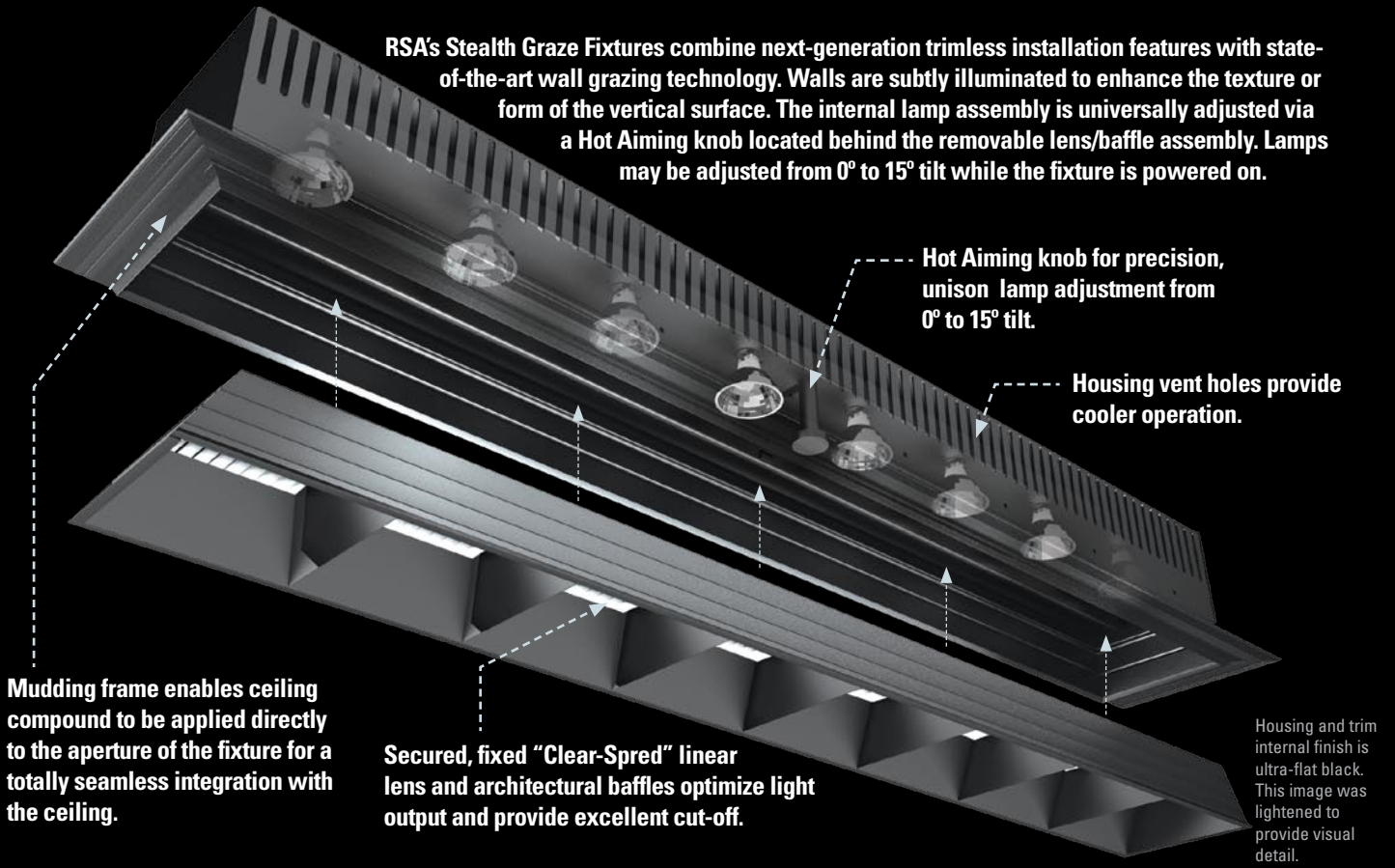
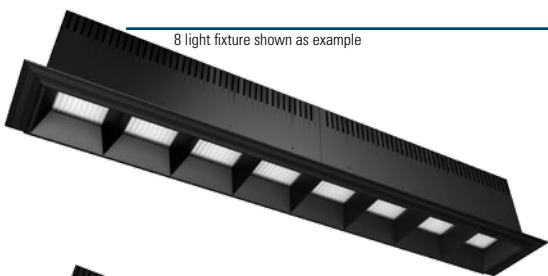


STEALTH GRAZE - TRIMLESS WALL GRAZER

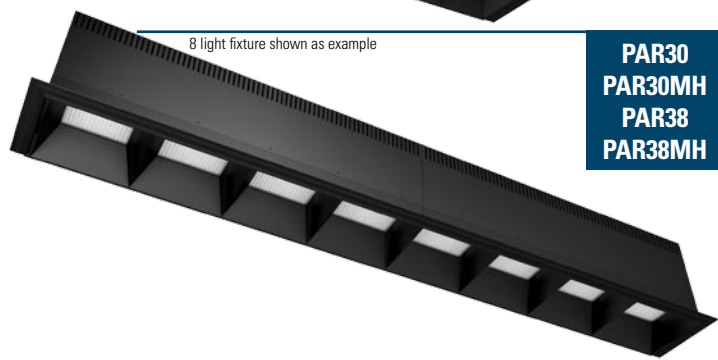
RSA's Stealth Graze Fixtures combine next-generation trimless installation features with state-of-the-art wall grazing technology. Walls are subtly illuminated to enhance the texture or form of the vertical surface. The internal lamp assembly is universally adjusted via a Hot Aiming knob located behind the removable lens/baffle assembly. Lamps may be adjusted from 0° to 15° tilt while the fixture is powered on.



**MR16
ALR12**



**PAR16
ES16MH
PAR20
PAR20MH**



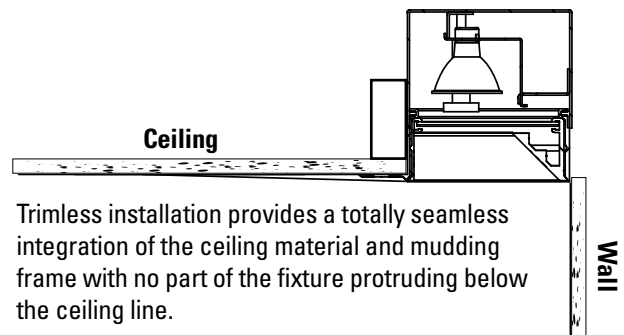
**PAR30
PAR30MH
PAR38
PAR38MH**

Stealth Graze is suitable for trimless installation in drywall ceilings against vertical surfaces. The housing includes a 3-sided "mud flange" for direct fastening to wood or metal studs or frames through the drywall.

The trim inserts are easily removable for maintenance and lamp aiming purposes.

RSA's 'Clear-Spred' linear spread lens perfectly diffuses the lamp beam from top to bottom while spreading it over a wider area. The architectural baffles of the Stealth Graze provide reduced lamp glare with optimized light output.

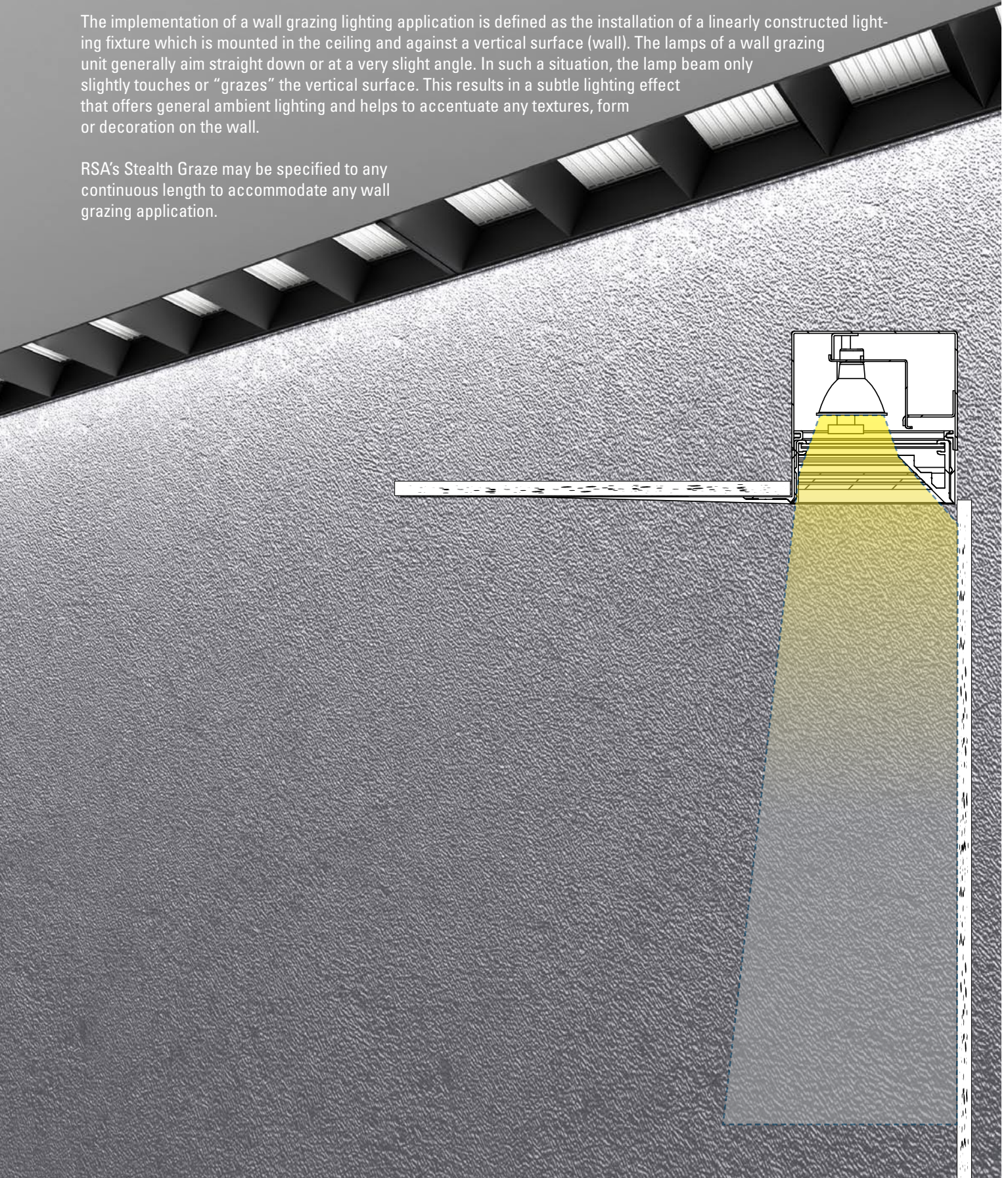
Stealth Graze is available for use with low voltage, line voltage and metal halide lamp sources. All low voltage and metal halide power supplies are remote.



Typical Wall Grazing Application

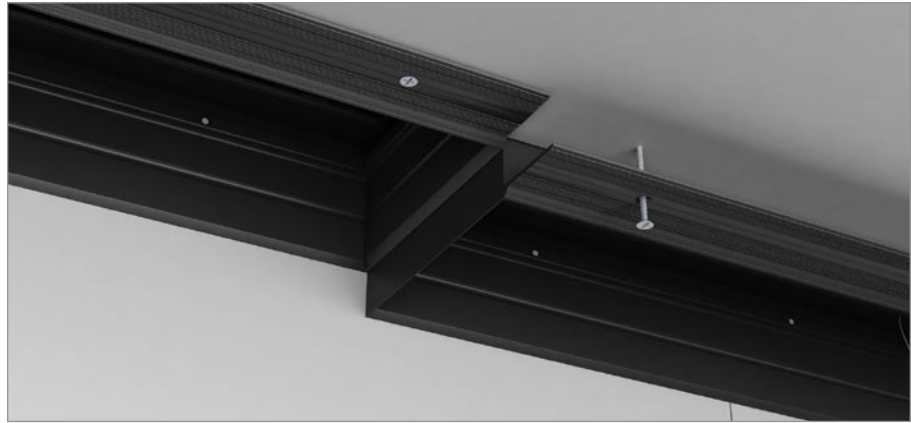
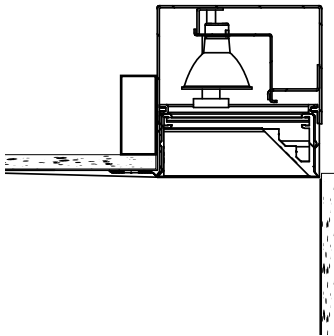
The implementation of a wall grazing lighting application is defined as the installation of a linearly constructed lighting fixture which is mounted in the ceiling and against a vertical surface (wall). The lamps of a wall grazing unit generally aim straight down or at a very slight angle. In such a situation, the lamp beam only slightly touches or “grazes” the vertical surface. This results in a subtle lighting effect that offers general ambient lighting and helps to accentuate any textures, form or decoration on the wall.

RSA’s Stealth Graze may be specified to any continuous length to accommodate any wall grazing application.



INSTALLATION

Stealth Graze is designed for trimless installation in drywall/plaster ceilings. Included is a mud flange with a screed edge for applying ceiling compound up to the edge of three sides of the fixture's aperture. The fourth side is mounted flush with the ceiling-to-wall corner. The housing is secured by fastening through the drywall to blocking (by others) via pre-drilled holes in the mud flange. Threaded rod may also be used as a support method.



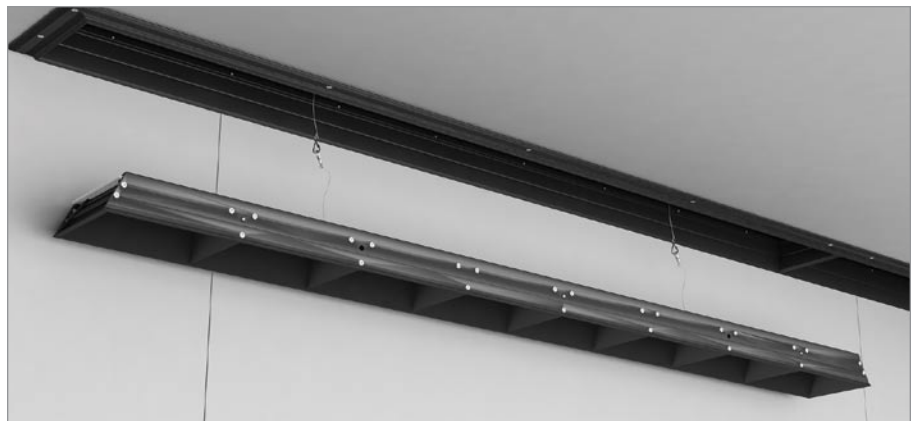
CONTINUOUS RUN

The maximum length of a single Stealth Graze fixture is 48" but longer, unlimited runs may be achieved by mounting fixtures end-to-end. Units are joined mechanically through knock-outs in the end plates with nuts and bolts.



BAFFLE/LENS INSERT

What makes the Stealth Graze system so unique and powerful is the removable baffle/lens insert. The architectural baffles are designed to cut glare while enhancing light output. Individual lenses are secured to the top of the baffle. The baffle is first connected to safety cables and then inserted into the housing. Bullet plunger retainers provide a smooth snap-in process for installation and removal for maintenance or adjustment.





READY FOR FINISHING

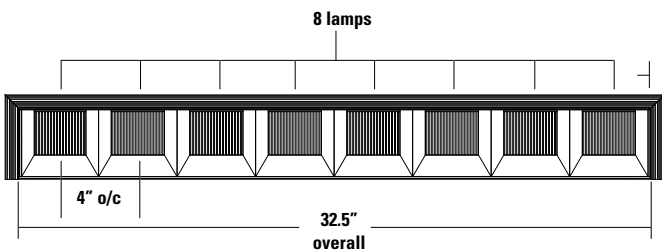
Once the fixtures are installed and tested, the ceiling is ready for final mudding compound application and paint or finishing.

SPECIFYING STEALTH GRAZE

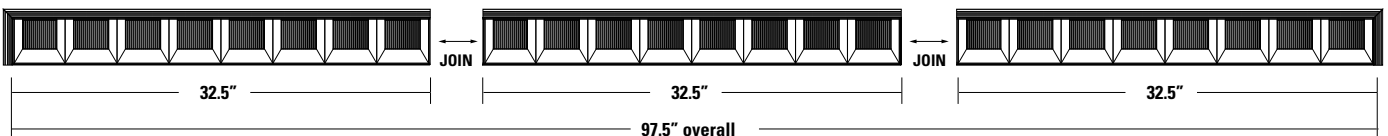
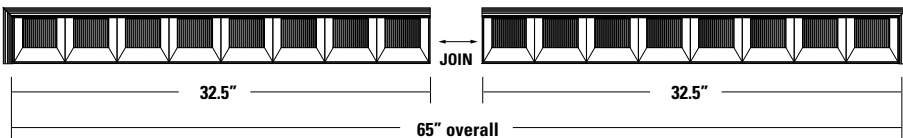
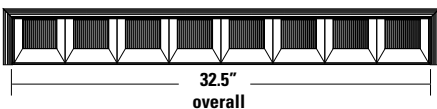
Setting up a long run of Stealth Graze fixtures is an easy process. The main thing to remember is that single units have a maximum length of 48". To figure the length of a single unit use the following formula. For multiple units in a single run repeat the formula for each unit and add together.

Number of Lamps	X	Lamp Spacing	+	0.5"	=	Overall Length
8		4" o/c		0.5"		32.5"

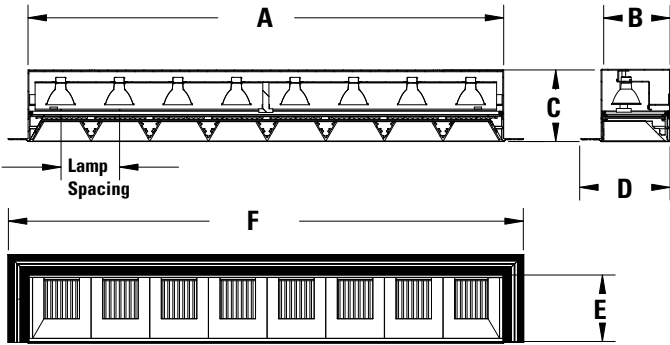
EXAMPLE = 8 light MR16 @ 4" o/c = 8 x 4 + .5 = 32.5"



NOTE: The mud-flange is 1.375" wide. This dimension is not figured in the overall length of the fixture. Be sure that there is at least 1.375" of space at the front and sides of the fixture to accommodate the mud-flange.



NEW

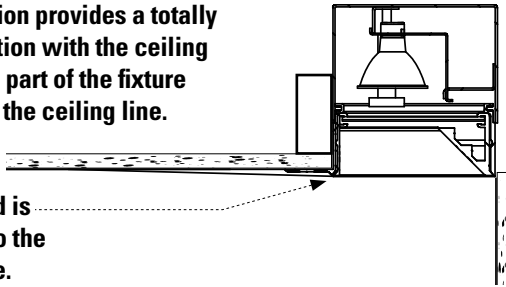


(8 light fixture shown above for dimensional purposes)

DIMENSIONS					
A	B	C	D	E	F
**	4.70"	4.89"	6.07"	4.55"	A + 2.69"

Trimless installation provides a totally seamless integration with the ceiling materials with no part of the fixture protruding below the ceiling line.

Ceiling compound is applied directly to the edge of the fixture.



STEALTH GRAZE - MR16

Item #
STG-MR16 Wall Grazer for 12V MR16

Wattage
20 20 Watt 12V MR16
37 37 Watt 12V MR16
42 42 Watt 12V MR16
50 50 Watt 12V MR16
71 71 Watt 12V MR16

Lamp Quantity
 -- Specify desired quantity of lamps

Lamp Spacing
4 4" o/c
6 6" o/c

Trim Insert Finish
WH White
BK Black
PT Custom Color (Specify)

Emergency Lighting
EM Relay Emergency Module

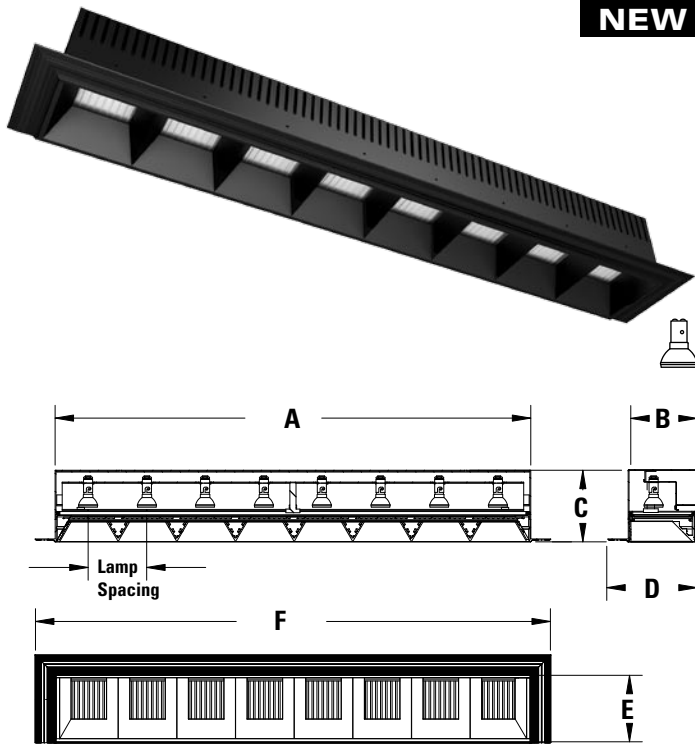
Ordering Example
STG-MR16-50-8-4-BK
 Stealth Graze Fixture, 8 - 50W MR16 lamps on 4" centers, Black trim insert

** Calculating length: "Lamp Qty" x "Lamp Spacing" + 0.5 = Length
EXAMPLE = 8 lights @ 4" o/c = 8 x 4 + .5 = 32.5" Length
 See page 121 for details.

Features

- Provides an evenly distributed "graze" of light across a vertical surface.
- Next generation trimless installation provides direct aperture to ceiling transition.
- Baffles provide excellent cut-off and decreased lamp brightness. Baffle/lens assembly is easily removed for maintenance and relamping.
- RSA's exclusive "CLEAR-SPRED" linear spread lens spreads the light evenly across vertical surfaces.
- HOT AIMING adjustment mechanism is concealed behind the trim assembly. The knob may be turned by hand or tool for easy, precise adjustment of lamps from 0° to 15°.
- Thermal protection provided to guard against overheating. Vent holes in the housing provide increased air flow.
- CONFIGURED FOR REMOTE TRANSFORMER

NEW



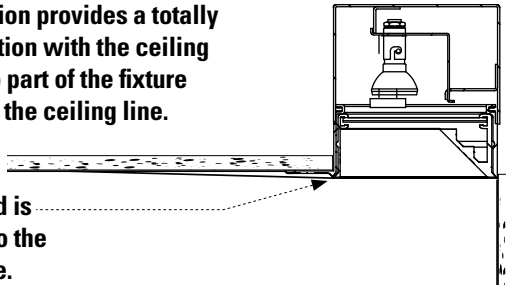
(8 light fixture shown above for dimensional purposes)

DIMENSIONS

A	B	C	D	E	F
**	4.70"	4.89"	6.07"	4.55"	A + 2.69"

Trimless installation provides a totally seamless integration with the ceiling materials with no part of the fixture protruding below the ceiling line.

Ceiling compound is applied directly to the edge of the fixture.



STEALTH GRAZE - ALR12

Item #	STG-ALR12	Wall Grazer for 12V ALR12
Wattage	20	20 Watt 12V ALR12
Lamp Quantity	--	Specify desired quantity of lamps
Lamp Spacing	4	4" o/c
	6	6" o/c
Trim Insert Finish	WH	White
	BK	Black
	PT	Custom Color (Specify)
Emergency Lighting	EM	Relay Emergency Module

Ordering Example

STG-ALR12-20-8-4-BK

Stealth Graze Fixture, 8 - 20W ALR12 lamps on 4" centers, Black trim insert

**** Calculating length: "Lamp Qty" x "Lamp Spacing" + 0.5 = Length**

EXAMPLE = 8 lights @ 4" o/c = 8 x 4 + .5 = 32.5" Length

See page 121 for details.

Features

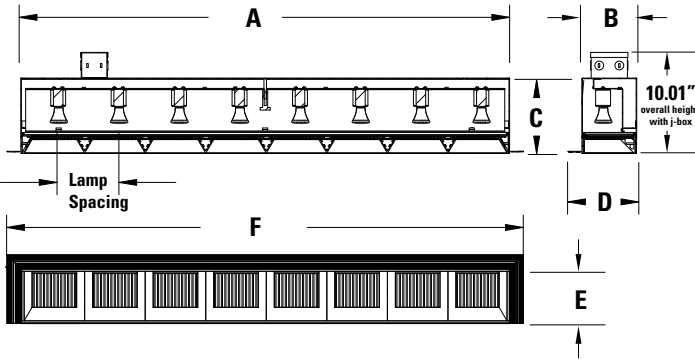
- Provides an evenly distributed "graze" of light across a vertical surface.
- Next generation trimless installation provides direct aperture to ceiling transition.
- Baffles provide excellent cut-off and decreased lamp brightness. Baffle/lens assembly is easily removed for maintenance and relamping.
- RSA's exclusive "CLEAR-SPRED" linear spread lens spreads the light evenly across vertical surfaces.
- HOT AIMING adjustment mechanism is concealed behind the trim assembly. The knob may be turned by hand or tool for easy, precise adjustment of lamps from 0° to 15°.
- Thermal protection provided to guard against overheating. Vent holes in the housing provide increased air flow.
- CONFIGURED FOR REMOTE TRANSFORMER



STEALTH GRAZE - TRIMLESS - 120V PAR16

STEALTH GRAZE - TRIMLESS - 120V PAR16

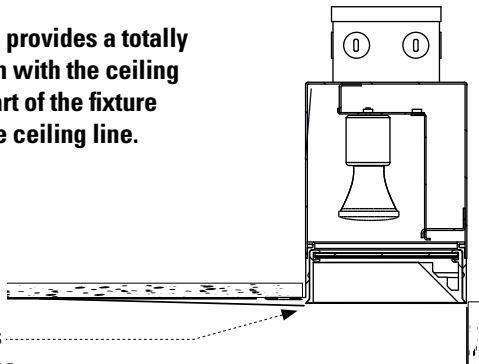
NEW



(8 light fixture shown above for dimensional purposes)

DIMENSIONS					
A	B	C	D	E	F
**	5.45"	7.46"	6.82"	5.36"	A + 2.69"

Trimless installation provides a totally seamless integration with the ceiling materials with no part of the fixture protruding below the ceiling line.



Ceiling compound is applied directly to the edge of the fixture.

STEALTH GRAZE - PAR16

Item #	
STG-PAR16	Wall Grazer for 120V PAR16
Lamp Quantity	
--	Specify desired quantity of lamps
Lamp Spacing	
6	6" o/c
9	9" o/c
Trim Insert Finish	
WH	White
BK	Black
PT	Custom Color (Specify)

Ordering Example
STG-PAR16-8-6-BK
 Stealth Graze Fixture, 8 - 120V PAR16 lamps on 6" centers, Black trim insert

** Calculating length: "Lamp Qty" x "Lamp Spacing" + 0.5 = Length
EXAMPLE = 8 lights @ 6" o/c = 8 x 6 + .5 = 48.5" Length
 See page 121 for details.

Features

- Provides an evenly distributed "graze" of light across a vertical surface.
- Next generation trimless installation provides direct aperture to ceiling transition.
- Baffles provide excellent cut-off and decreased lamp brightness. Baffle/lens assembly is easily removed for maintenance and relamping.
- RSA's exclusive "CLEAR-SPRED" linear spread lens spreads the light evenly across vertical surfaces.
- HOT AIMING adjustment mechanism is concealed behind the trim assembly. The knob may be turned by hand or tool for easy, precise adjustment of lamps from 0° to 15°.
- Thermal protection provided to guard against overheating. Vent holes in the housing provide increased air flow.
- Includes junction box for line voltage electrical connection.

NEW



STEALTH GRAZE - PAR20

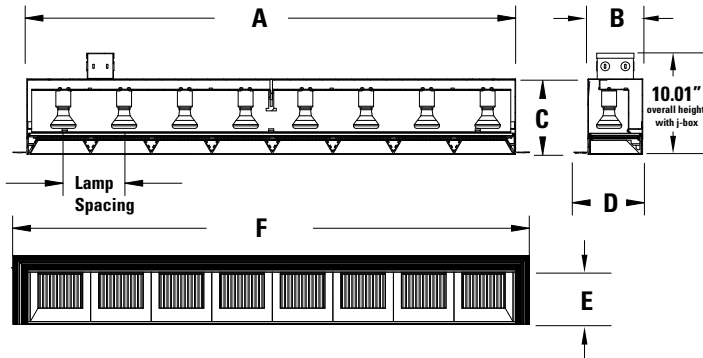
Item #	STG-PAR20	Wall Grazer for 120V PAR20
Lamp Quantity	--	Specify desired quantity of lamps
Lamp Spacing	6	6" o/c
	9	9" o/c
Trim Insert Finish	WH	White
	BK	Black
	PT	Custom Color (Specify)

Ordering Example

STG-PAR20-8-6-BK

Stealth Graze Fixture, 8 - 120V PAR20 lamps on 6" centers, Black trim insert

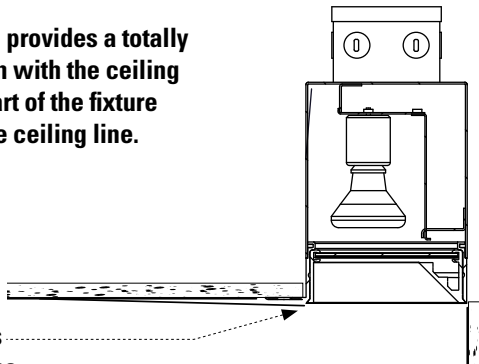
** Calculating length: "Lamp Qty" x "Lamp Spacing" + 0.5 = Length
EXAMPLE = 8 lights @ 6" o/c = 8 x 6 + .5 = 48.5" Length
 See page 121 for details.



(8 light fixture shown above for dimensional purposes)

DIMENSIONS					
A	B	C	D	E	F
**	5.45"	7.46"	6.82"	5.36"	A + 2.69"

Trimless installation provides a totally seamless integration with the ceiling materials with no part of the fixture protruding below the ceiling line.



Ceiling compound is applied directly to the edge of the fixture.

Features

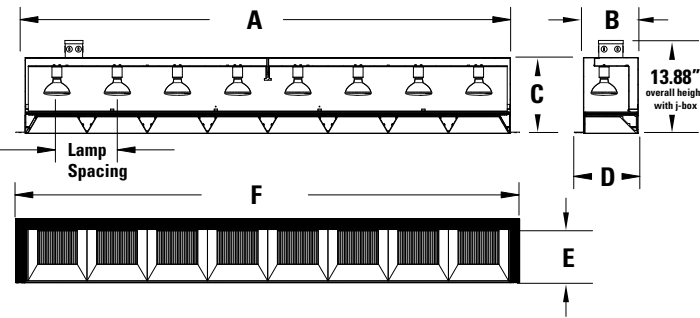
- Provides an evenly distributed "graze" of light across a vertical surface.
- Next generation trimless installation provides direct aperture to ceiling transition.
- Baffles provide excellent cut-off and decreased lamp brightness. Baffle/lens assembly is easily removed for maintenance and relamping.
- RSA's exclusive "CLEAR-SPRED" linear spread lens spreads the light evenly across vertical surfaces.
- HOT AIMING adjustment mechanism is concealed behind the trim assembly. The knob may be turned by hand or tool for easy, precise adjustment of lamps from 0° to 15°.
- Thermal protection provided to guard against overheating. Vent holes in the housing provide increased air flow.
- Includes junction box for line voltage electrical connection.



STEALTH GRAZE - TRIMLESS - 120V PAR30

STEALTH GRAZE - TRIMLESS - 120V PAR30

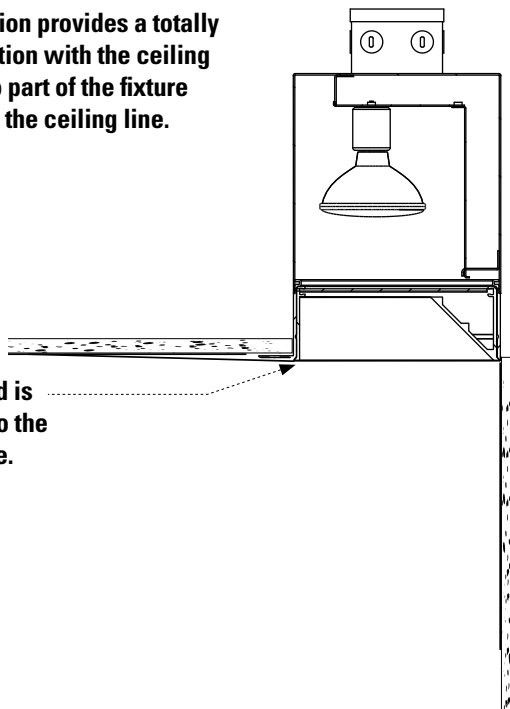
NEW



(8 light fixture shown above for dimensional purposes)

DIMENSIONS					
A	B	C	D	E	F
**	8.20"	11.15"	9.57"	8.15"	A + 2.69"

Trimless installation provides a totally seamless integration with the ceiling materials with no part of the fixture protruding below the ceiling line.



Ceiling compound is applied directly to the edge of the fixture.

STEALTH GRAZE - PAR30

Item #	
STG-PAR30	Wall Grazer for 120V PAR30
Lamp Quantity	-- Specify desired quantity of lamps
Lamp Spacing	
9	9" o/c
12	12" o/c
Trim Insert Finish	
WH	White
BK	Black
PT	Custom Color (Specify)

Ordering Example

STG-PAR30-4-9-BK

Stealth Graze Fixture, 4 - 120V PAR30 lamps on 9" centers, Black trim insert

** Calculating length: "Lamp Qty" x "Lamp Spacing" + 0.5 = Length

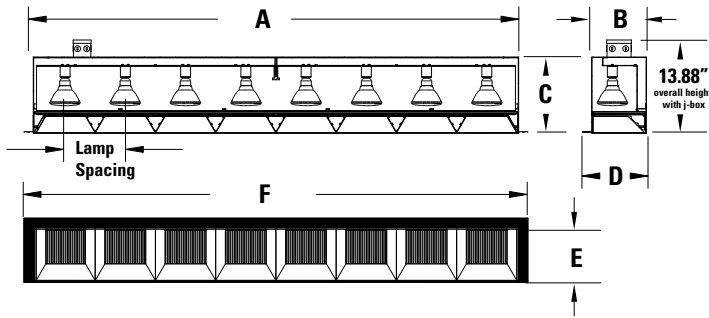
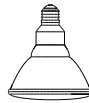
EXAMPLE = 4 lights @ 9" o/c = 4 x 9 + .5 = 36.5" Length

See page 121 for details.

Features

- Provides an evenly distributed "graze" of light across a vertical surface.
- Next generation trimless installation provides direct aperture to ceiling transition.
- Baffles provide excellent cut-off and decreased lamp brightness. Baffle/lens assembly is easily removed for maintenance and relamping.
- RSA's exclusive "CLEAR-SPRED" linear spread lens spreads the light evenly across vertical surfaces.
- HOT AIMING adjustment mechanism is concealed behind the trim assembly. The knob may be turned by hand or tool for easy, precise adjustment of lamps from 0° to 15°.
- Thermal protection provided to guard against overheating. Vent holes in the housing provide increased air flow.
- Includes junction box for line voltage electrical connection.

NEW

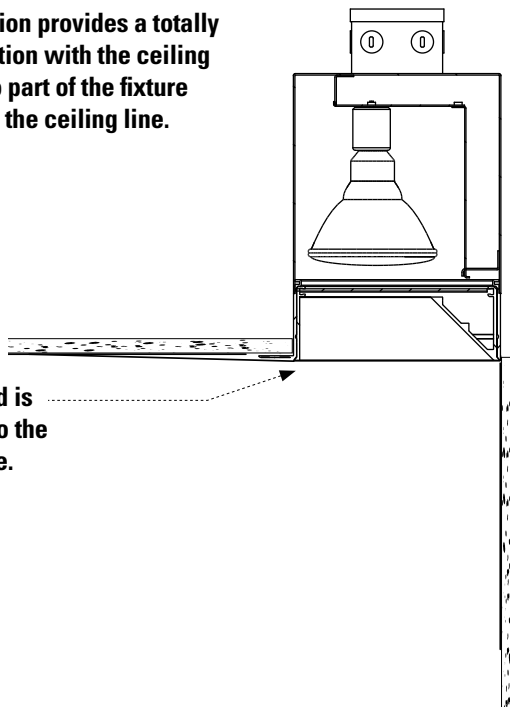


(8 light fixture shown above for dimensional purposes)

DIMENSIONS

A	B	C	D	E	F
**	8.20"	11.15"	9.57"	8.15"	A + 2.69"

Trimless installation provides a totally seamless integration with the ceiling materials with no part of the fixture protruding below the ceiling line.



Ceiling compound is applied directly to the edge of the fixture.

STEALTH GRAZE - PAR38

Item #	STG-PAR38	Wall Grazer for 120V PAR38
Lamp Quantity	--	Specify desired quantity of lamps
Lamp Spacing	9	9" o/c
	12	12" o/c
Trim Insert Finish	WH	White
	BK	Black
	PT	Custom Color (Specify)

Ordering Example

STG-PAR38-4-9-BK

Stealth Graze Fixture, 4 - 120V PAR38 lamps on 9" centers,, Black trim insert

** Calculating length: "Lamp Qty" x "Lamp Spacing" + 0.5 = Length

EXAMPLE = 4 lights @ 9" o/c = 4 x 9 + .5 = 36.5" Length

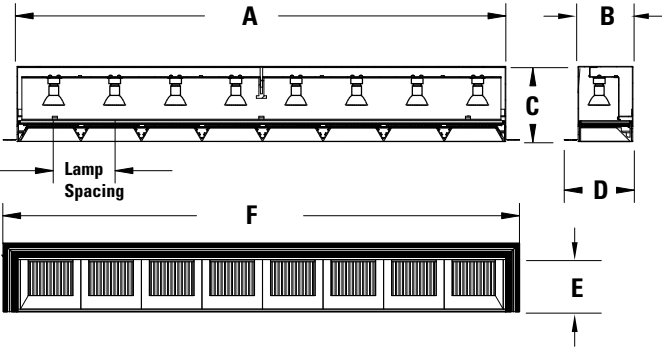
See page 121 for details.

Features

- Provides an evenly distributed "graze" of light across a vertical surface.
- Next generation trimless installation provides direct aperture to ceiling transition.
- Baffles provide excellent cut-off and decreased lamp brightness. Baffle/lens assembly is easily removed for maintenance and relamping.
- RSA's exclusive "CLEAR-SPRED" linear spread lens spreads the light evenly across vertical surfaces.
- HOT AIMING adjustment mechanism is concealed behind the trim assembly. The knob may be turned by hand or tool for easy, precise adjustment of lamps from 0° to 15°.
- Thermal protection provided to guard against overheating. Vent holes in the housing provide increased air flow.
- Includes junction box for line voltage electrical connection.



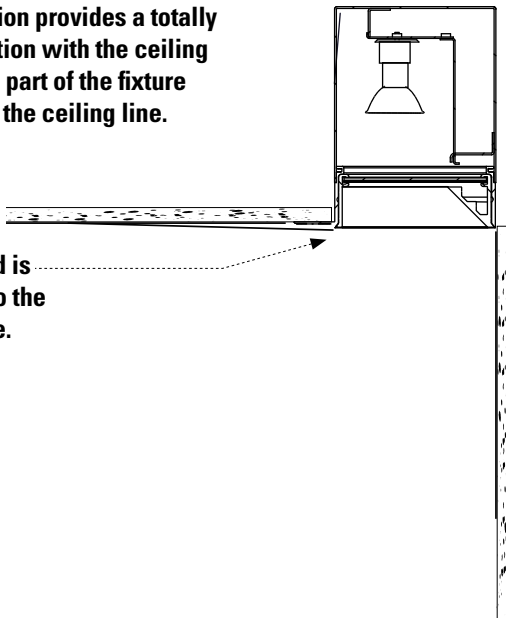
NEW



(8 light fixture shown above for dimensional purposes)

DIMENSIONS					
A	B	C	D	E	F
**	5.45"	7.46"	6.82"	5.36"	A + 2.69"

Trimless installation provides a totally seamless integration with the ceiling materials with no part of the fixture protruding below the ceiling line.



Ceiling compound is applied directly to the edge of the fixture.

STEALTH GRAZE - ES16 Metal Halide

Item #	
STG-ES16MH	Wall Grazer for ES16 Metal Halide
Wattage	
20	20 Watt ES16 Metal Halide
39	39 Watt ES16 Metal Halide
Lamp Quantity	
--	Specify desired quantity of lamps
Lamp Spacing	
6	6" o/c
9	9" o/c
Trim Insert Finish	
WH	White
BK	Black
PT	Custom Color (Specify)

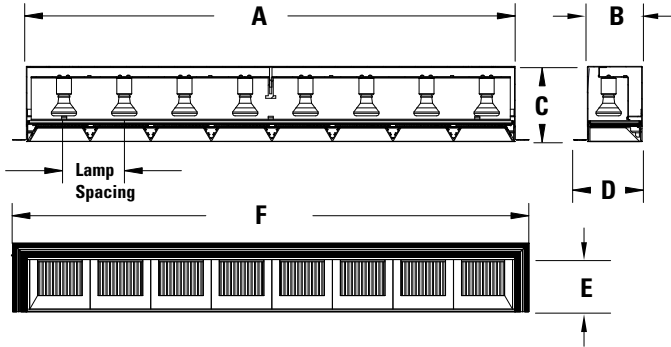
Ordering Example
STG-ES16MH-39-8-6-BK
 Stealth Graze Fixture, 8 - 39 Watt ES16 Metal Halide lamps on 6" centers, 48" length, Black trim insert

**** Calculating length: "Lamp Qty" x "Lamp Spacing" + 0.5 = Length**
EXAMPLE = 8 lights @ 6" o/c = 8 x 6 + .5 = 48.5" Length
 See page 121 for details.

Features

- Provides an evenly distributed "graze" of light across a vertical surface.
- Next generation trimless installation provides direct aperture to ceiling transition.
- Baffles provide excellent cut-off and decreased lamp brightness. Baffle/lens assembly is easily removed for maintenance and relamping.
- RSA's exclusive "CLEAR-SPRED" linear spread lens spreads the light evenly across vertical surfaces.
- HOT AIMING adjustment mechanism is concealed behind the trim assembly. The knob may be turned by hand or tool for easy, precise adjustment of lamps from 0° to 15°.
- Thermal protection provided to guard against overheating. Vent holes in the housing provide increased air flow.
- CONFIGURED FOR REMOTE BALLAST

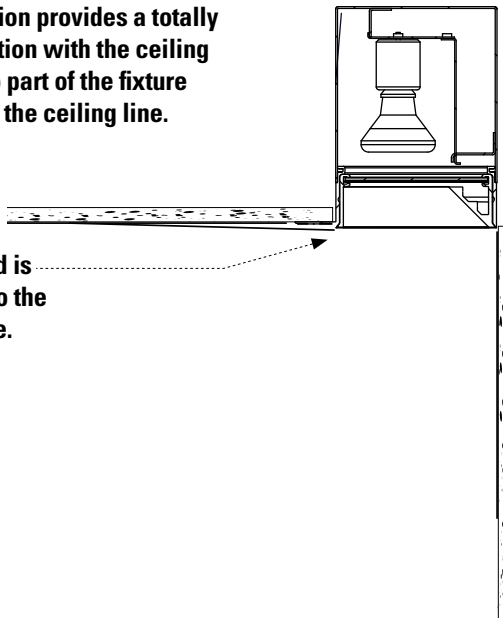
NEW



(8 light fixture shown above for dimensional purposes)

DIMENSIONS					
A	B	C	D	E	F
**	5.45"	7.46"	6.82"	5.36"	A + 2.69"

Trimless installation provides a totally seamless integration with the ceiling materials with no part of the fixture protruding below the ceiling line.



Ceiling compound is applied directly to the edge of the fixture.

STEALTH GRAZE - PAR20 Metal Halide

Item #	
STG-PAR20MH	Wall Grazer for PAR20 Metal Halide
Lamp Wattage	
20	20 watt PAR20 Metal Halide
39	39 watt PAR20 Metal Halide
Lamp Quantity	
--	Specify desired quantity of lamps
Lamp Spacing	
6	6" o/c
9	9" o/c
Trim Insert Finish	
WH	White
BK	Black
PT	Custom Color (Specify)

Ordering Example

STG-PAR20MH-39-8-6-BK

Stealth Graze Fixture, 8 - 39 Watt PAR20 Metal Halide lamps on 6" centers, Black trim insert

**** Calculating length: "Lamp Qty" x "Lamp Spacing" + 0.5 = Length**
EXAMPLE = 8 lights @ 6" o/c = 8 x 6 + .5 = 48.5" Length
 See page 121 for details.

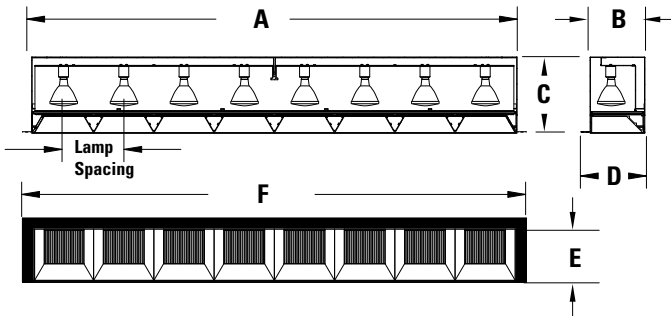
Features

- Provides an evenly distributed "graze" of light across a vertical surface.
- Next generation trimless installation provides direct aperture to ceiling transition.
- Baffles provide excellent cut-off and decreased lamp brightness. Baffle/lens assembly is easily removed for maintenance and relamping.
- RSA's exclusive "CLEAR-SPRED" linear spread lens spreads the light evenly across vertical surfaces.
- HOT AIMING adjustment mechanism is concealed behind the trim assembly. The knob may be turned by hand or tool for easy, precise adjustment of lamps from 0° to 15°.
- Thermal protection provided to guard against overheating. Vent holes in the housing provide increased air flow.
- CONFIGURED FOR REMOTE BALLAST

STEALTH GRAZE - TRIMLESS - PAR30 METAL HALIDE

STEALTH GRAZE - TRIMLESS - PAR30 METAL HALIDE

NEW



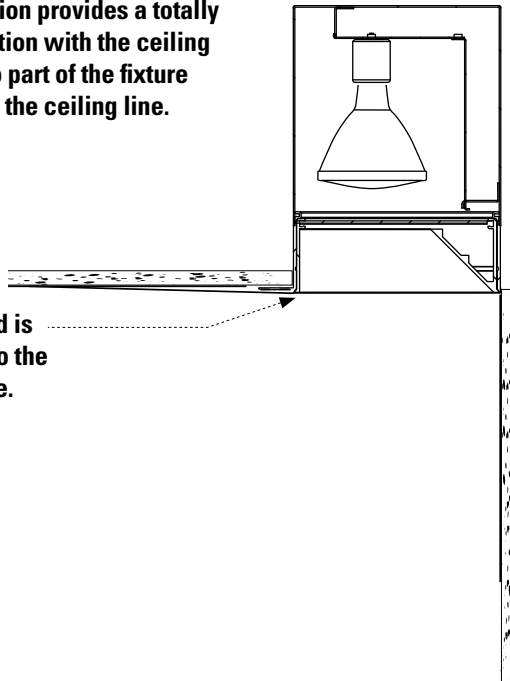
(8 light fixture shown above for dimensional purposes)

DIMENSIONS

A	B	C	D	E	F
**	8.20"	11.15"	9.57"	8.15"	A + 2.69"

Trimless installation provides a totally seamless integration with the ceiling materials with no part of the fixture protruding below the ceiling line.

Ceiling compound is applied directly to the edge of the fixture.



STEALTH GRAZE - PAR30 Metal Halide

Item #

STG-PAR30MH Wall Grazer for PAR30 Metal Halide

Wattage

39 39 Watt PAR30 Metal Halide

70 70 Watt PAR30 Metal Halide

Lamp Quantity

-- Specify desired quantity of lamps

Lamp Spacing

9 9" o/c

12 12" o/c

Trim Insert Finish

WH White

BK Black

PT Custom Color (Specify)

Ordering Example

STG-PAR30MH-39-4-9-BK

Stealth Graze Fixture, 4 - 39 Watt PAR30 Metal Halide lamps on 9" centers, Black trim insert

** Calculating length: "Lamp Qty" x "Lamp Spacing" + 0.5 = Length

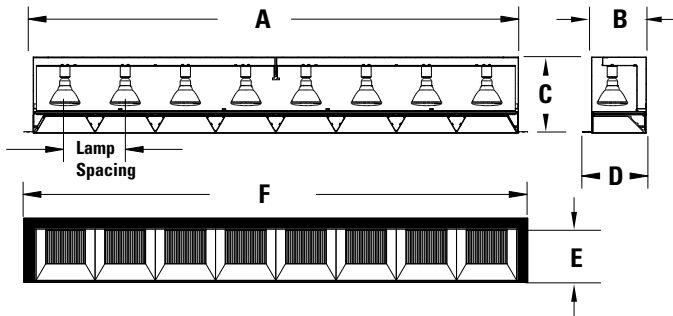
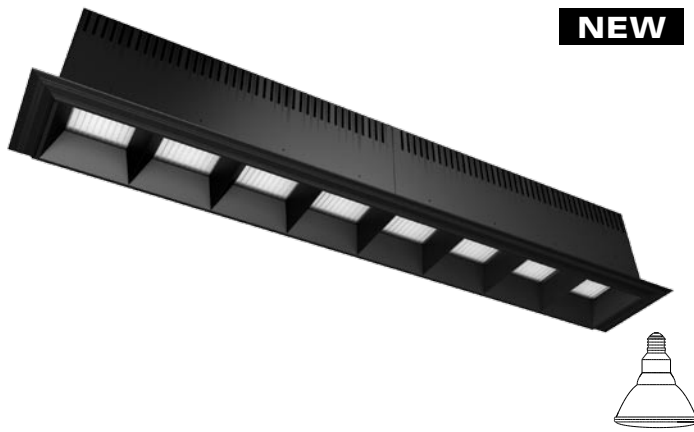
EXAMPLE = 4 lights @ 9" o/c = 4 x 9 + .5 = 36.5" Length

See page 121 for details.

Features

- Provides an evenly distributed "graze" of light across a vertical surface.
- Next generation trimless installation provides direct aperture to ceiling transition.
- Baffles provide excellent cut-off and decreased lamp brightness. Baffle/lens assembly is easily removed for maintenance and relamping.
- RSA's exclusive "CLEAR-SPRED" linear spread lens spreads the light evenly across vertical surfaces.
- HOT AIMING adjustment mechanism is concealed behind the trim assembly. The knob may be turned by hand or tool for easy, precise adjustment of lamps from 0° to 15°.
- Thermal protection provided to guard against overheating. Vent holes in the housing provide increased air flow.
- CONFIGURED FOR REMOTE BALLAST

NEW

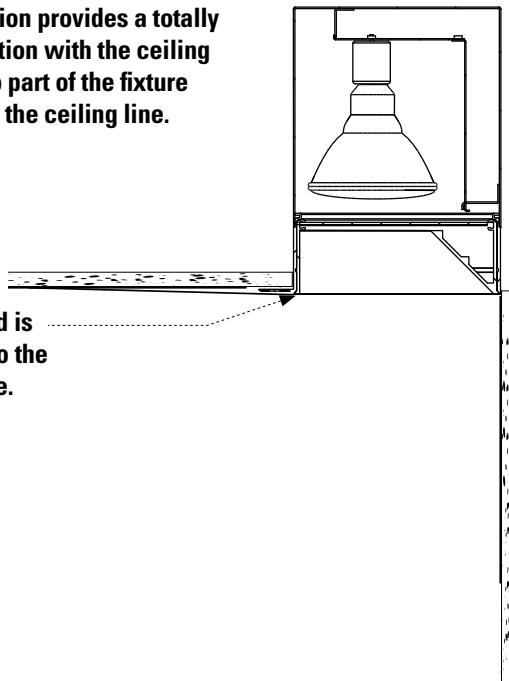


(8 light fixture shown above for dimensional purposes)

DIMENSIONS

A	B	C	D	E	F
**	8.20"	11.15"	9.57"	8.15"	A + 2.69"

Trimless installation provides a totally seamless integration with the ceiling materials with no part of the fixture protruding below the ceiling line.



Ceiling compound is applied directly to the edge of the fixture.

STEALTH GRAZE - PAR38 Metal Halide

Item #	
STG-PAR38MH	Wall Grazer for PAR38 Metal Halide
Lamp Wattage	
70	70 watt PAR38 Metal Halide
100	100 watt PAR38 Metal Halide
Lamp Quantity	
--	Specify desired quantity of lamps
Lamp Spacing	
9	9" o/c
12	12" o/c
Trim Insert Finish	
WH	White
BK	Black
PT	Custom Color (Specify)

Ordering Example

STG-PAR38MH-70-4-9-BK

Stealth Graze Fixture, 4 - 70 Watt PAR38 Metal Halide lamps on 9" centers, Black trim insert

** Calculating length: "Lamp Qty" x "Lamp Spacing" + 0.5 = Length

EXAMPLE = 4 lights @ 9" o/c = 4 x 9 + .5 = 36.5" Length

See page 121 for details.

Features

- Provides an evenly distributed "graze" of light across a vertical surface.
- Next generation trimless installation provides direct aperture to ceiling transition.
- Baffles provide excellent cut-off and decreased lamp brightness. Baffle/lens assembly is easily removed for maintenance and relamping.
- RSA's exclusive "CLEAR-SPRED" linear spread lens spreads the light evenly across vertical surfaces.
- HOT AIMING adjustment mechanism is concealed behind the trim assembly. The knob may be turned by hand or tool for easy, precise adjustment of lamps from 0° to 15°.
- Thermal protection provided to guard against overheating. Vent holes in the housing provide increased air flow.
- CONFIGURED FOR REMOTE BALLAST

