

LIMELITE - Continuous floor mounted up-lighting system



Designed for retail display lighting applications

LIMELITE

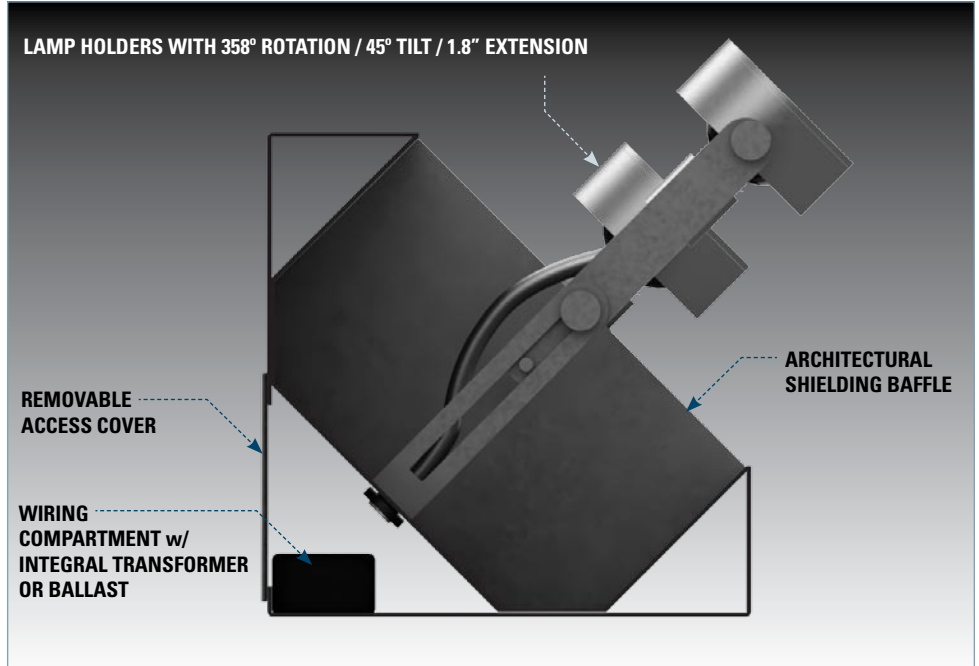
Limelite brings retail display lighting into the dramatic world of high-fashion. By illuminating the display from the floor instead of the ceiling, the effect achieved is similar to that of a modeling runway or the footlights of a stage. In most cases the light source is closer to the merchandise than if it were mounted in the ceiling. This enables the lighting designer to achieve dramatic and expressive results, focusing more closely on the merchandise without spill-over to surrounding environments.

Limelite is a linear metal channel which houses low voltage MR16 or ES16 Metal Halide lamps in a variety of spacing intervals. Lamps are divided by architectural shielding baffles. Each lamp compartment has an integral low voltage electronic transformer or electronic metal halide ballast.

Lamp holders are fully adjustable (358° rotation x 45° tilt) and may be extended by a distance of 1.80".

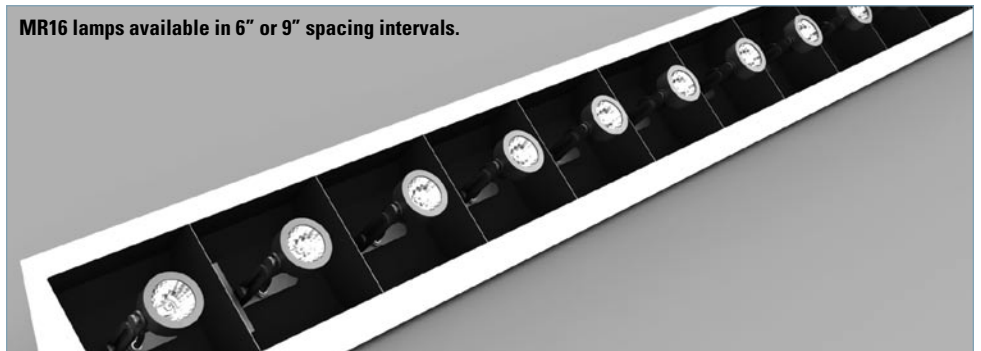
The Limelite housing incorporates a wiring compartment that runs the entire length of the housing. Removable access plates are distributed along the housing length to provide full access for maintenance.

Limelite housings are available in standard architectural finishes. The system is specified linearly. Maximum length of a single unit is eight feet. Consult the RSA factory for custom configurations.

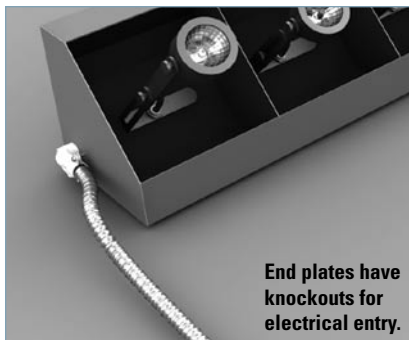


- MOUNTS TO FLOOR
- USE AS UPLIGHTING SYSTEM FOR RETAIL DISPLAYS
- FULLY ADJUSTABLE LAMP HOLDERS
- LOW VOLTAGE MR16
- ES16 BRITESPOT® METAL HALIDE
- INTEGRAL TRANSFORMERS OR BALLASTS

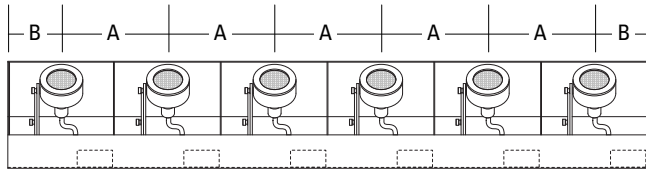
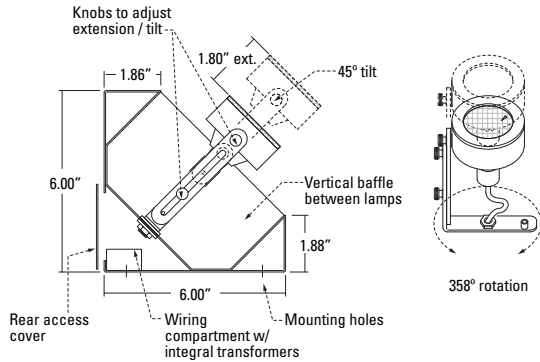
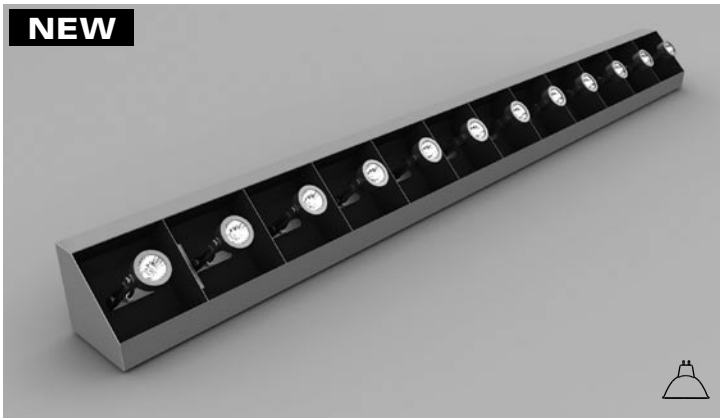
MR16 lamps available in 6" or 9" spacing intervals.



ES16MH lamps available in 9" or 12" spacing intervals.



End plates have knockouts for electrical entry.



A = Spacing B = Spacing x 0.5

Length is equal to the amount of lamps in a fixture multiplied by the length of the lamp spacing. Maximum single unit length is 8 feet. Examples:

6" o/c Spacing	9" o/c Spacing
1 light = 6" overall length	1 light = 9" overall length
2 light = 12" overall length	2 light = 18" overall length
3 light = 18" overall length	3 light = 27" overall length
4 light = 24" overall length	4 light = 36" overall length
5 light = 30" overall length	5 light = 45" overall length
6 light = 36" overall length	6 light = 54" overall length
7 light = 42" overall length	7 light = 63" overall length
8 light = 48" overall length	8 light = 72" overall length
9 light = 54" overall length	9 light = 81" overall length
10 light = 60" overall length	10 light = 90" overall length
11 light = 66" overall length	11 light = 99" overall length
12 light = 72" overall length	12 light = 108" overall length

LIMELITE

Item #	
LL-MR16	Floor mounted display lighting for 12V MR16

Wattage	
20	20 Watt 12V MR16
37	37 Watt 12V MR16
42	42 Watt 12V MR16
50	50 Watt 12V MR16
71	71 Watt 12V MR16

Lamp Spacing	
6	6" o/c
9	9" o/c

Length	
--	Length = # of Lamps x Spacing

Finish	
WH	White
BK	Black
S	Silver

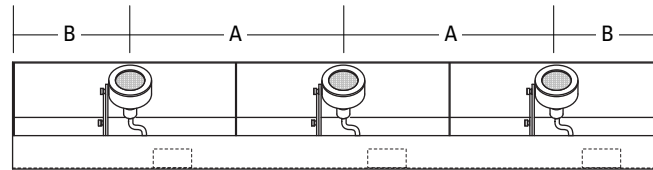
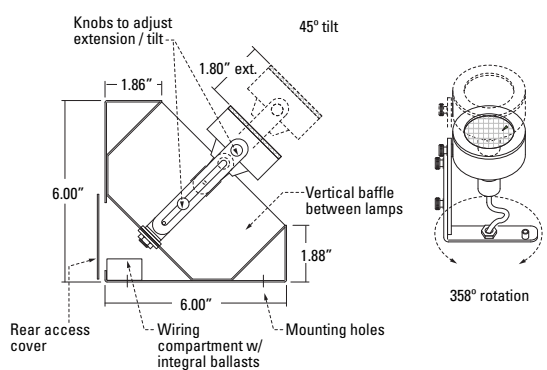
Transformer	
ELC	Electronic
REM	Remote Power Supply (no transformer)

Voltage	
120	120 volts
277	277 volts

Ordering Example
LL-MR16-50-6-72-S-ELC-120
 LIMELITE fixture for 12V MR16, 50 watt lamps, 6" o/c, 72" length, silver finish, electronic transformer, 120 volts

Features

- **UPLIGHTING** - Suitable for floor surface installation against walls, display glass or freestanding.
- **RETRACTABLE GIMBAL** - Provides added display illumination versatility. Lamp holder retracts 1.80" and has 358° rotation with 45° tilt adjustability.
- **SHIELDING BAFFLES** - Baffles provide decreased lamp brightness.
- **INTEGRAL ELECTRONIC METAL HALIDE BALLASTS** - May also be wired for remote ballasts. Housing includes a wiring compartment with removable access door. Transformers are mounted inside the wiring compartment.



A = Spacing B = Spacing x 0.5

Length is equal to the amount of lamps in a fixture multiplied by the length of the lamp spacing. Maximum single unit length is 8 feet. Examples:

9" o/c Spacing	12" o/c Spacing
1 light = 9" overall length	1 light = 12" overall length
2 light = 18" overall length	2 light = 24" overall length
3 light = 27" overall length	3 light = 36" overall length
4 light = 36" overall length	4 light = 48" overall length
5 light = 45" overall length	5 light = 60" overall length
6 light = 54" overall length	6 light = 72" overall length
7 light = 63" overall length	7 light = 84" overall length
8 light = 72" overall length	8 light = 96" overall length
9 light = 81" overall length	9 light = 108" overall length
10 light = 90" overall length	10 light = 120" overall length
11 light = 99" overall length	11 light = 132" overall length
12 light = 108" overall length	12 light = 144" overall length

LIMELITE

Item #	
LL-ES16MH	Floor mounted display lighting for ES16 BriteSpot® Metal Halide
Wattage	
20	20 Watt ES16MH
39	39 Watt ES16MH
Lamp Spacing	
9	9" o/c
12	12" o/c
Length	
--	Length = # of Lamps x Spacing
Finish	
WH	White
BK	Black
S	Silver
Ballast	
ELC	Electronic
REM	Remote Power Supply (no ballast)
Voltage	
120	120 volts
277	277 volts

Ordering Example

LL-ES16MH-20-12-72-S-ELC-120
 LIMELITE fixture for ES16MH BriteSpot® lamp, 20 watt lamps, 12" o/c, 72" length, silver finish, electronic ballast, 120 volts

Features

- **UPLIGHTING** - Suitable for floor surface installation against walls, display glass or freestanding.
- **RETRACTABLE GIMBAL** - Provides added display illumination versatility. Lamp holder retracts 1.80" and has 358° rotation with 45° tilt adjustability.
- **SHIELDING BAFFLES** - Baffles provide decreased lamp brightness.
- **INTEGRAL ELECTRONIC METAL HALIDE BALLASTS** - May also be wired for remote ballasts. Housing includes a wiring compartment with removable access door. Ballasts are mounted inside the wiring compartment.

