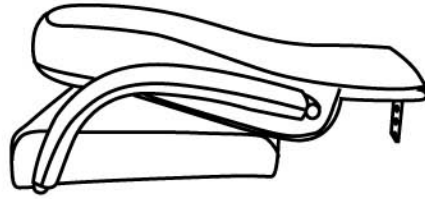


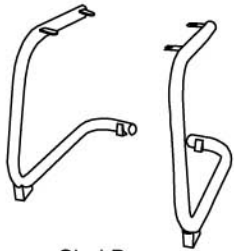
MODEL: 9309

(1)x1



Back & Seat W/ ARMS

(2)x1



Sled Base

(3)x1



Connecting Bar

**Customer Service Hotline:
1-800-593-1888**

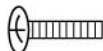
**Please unscrew all screws from the bottom
of seat cushion before assembly.**

(A)*2PCS



M6 * 8

(B)*6PCS



M6 * 25

(C)*4PCS



ARM CAP

(D)*4PCS

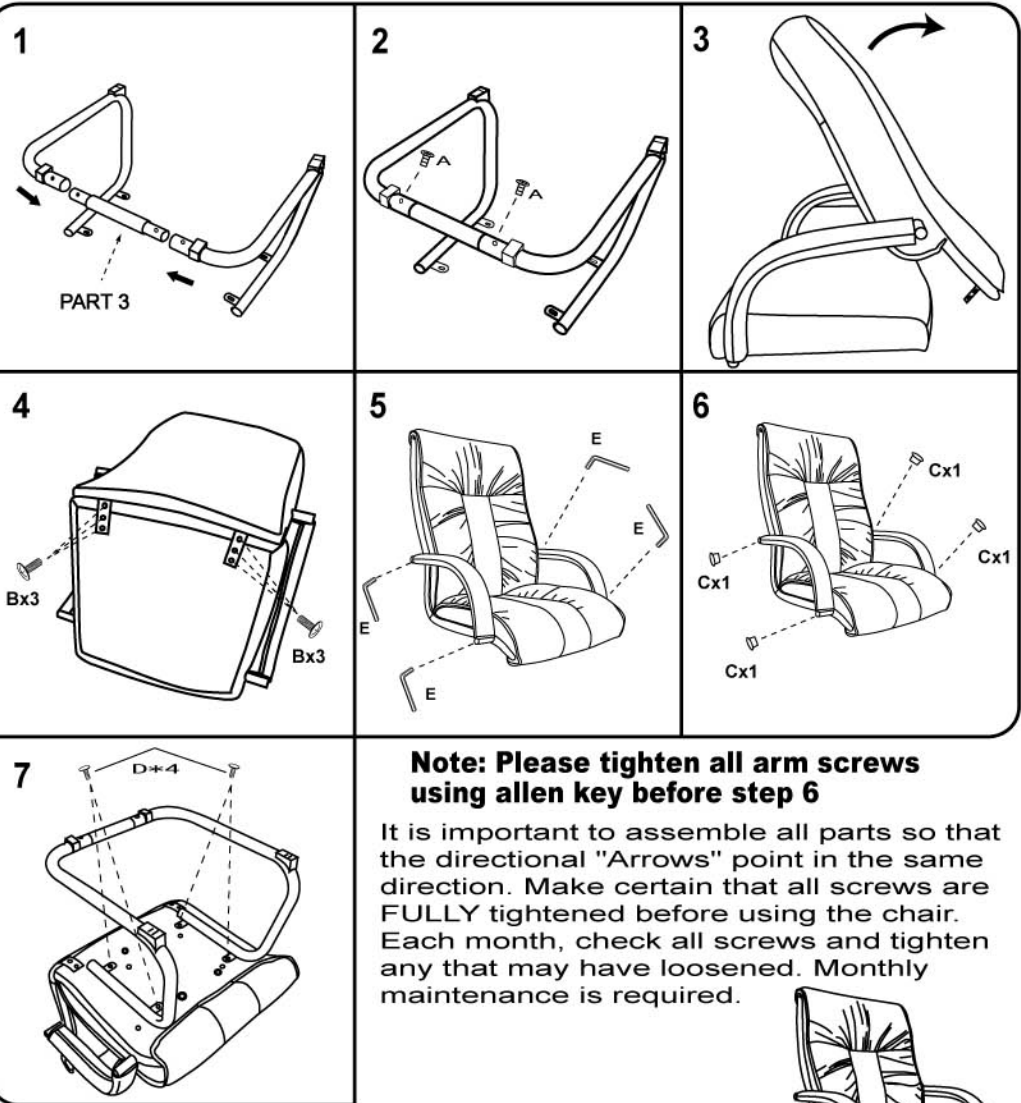


M6 * 22

(E)*1PC



ALLEN KEY



**Note: Please tighten all arm screws
using allen key before step 6**

It is important to assemble all parts so that the directional "Arrows" point in the same direction. Make certain that all screws are FULLY tightened before using the chair. Each month, check all screws and tighten any that may have loosened. Monthly maintenance is required.

Warning: Do not stand on the seat

**For further assembly instructions,
please visit our web site at
www.bosschair.com**

