

ELKAY®

SPECIFICATIONS

Lustertone® Double Bowl Corner Sink 18 Gauge – Type 304 – Self-Rim Model LCCR3232

GENERAL

Highest quality sink seamlessly drawn of #18 gauge, type 304 (18-8) nickel bearing stainless steel. Self-rimming.

DESIGN FEATURES

Bowl Depth: 8" (both bowls).

Coved Corners: 1-3/4" radius.

Finish: Exposed surfaces are hand blended to a lustrous highlighted satin finish.

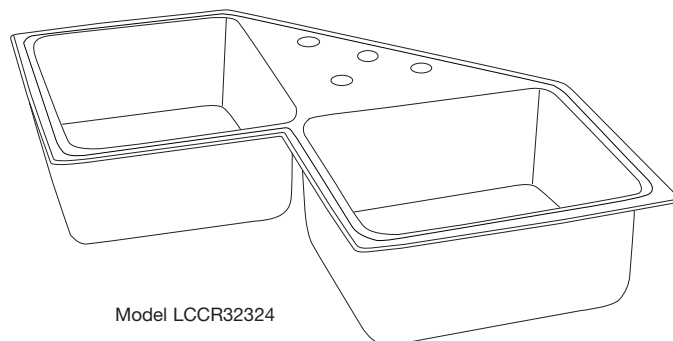
Underside: Fully undercoated by heavy duty Sound Guard® undercoating to prevent condensation and deaden sound.

OTHER

Drain Opening: 3-1/2".

Faucet Holes: Available with 3, 4 or 6, 1-1/2" diameter faucet holes.

NOTE: Unless otherwise specified, sink is furnished with 4 faucet holes.

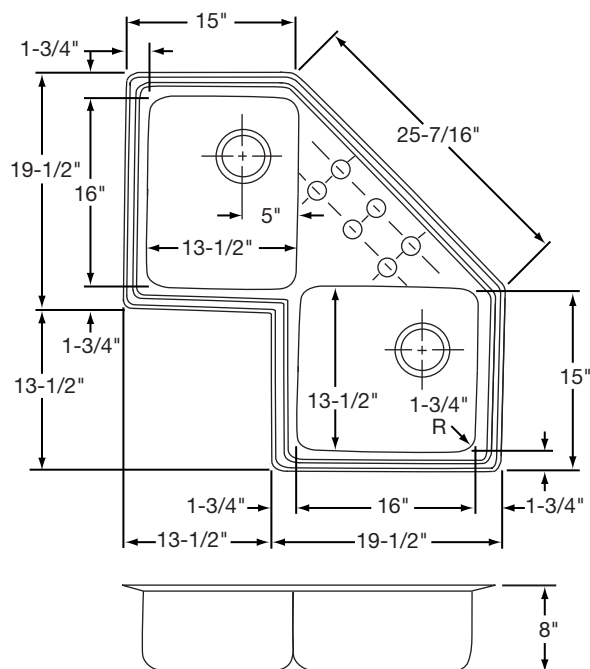


Model LCCR32324

SINK DIMENSIONS (INCHES)*

Model Number	Overall		Inside Each Bowl			Cutout in Countertop	No. of 1 1/2" Dia. Faucet Holes 4" Centers	Minimum Cabinet Size	Ship. Wt. Lbs.
	L	W	L	W	D				
LCCR3232	33	33	13 1/2	16	8	Use Sink Up-side-down as template and cut 5/16" INSIDE Sink Outline.	3, 4 or 6	36	23 3/4

* Length is left to right. Width is front to back.



Model LCCR32326 Illustrated

ALL DIMENSIONS IN INCHES, TO CONVERT TO MILLIMETERS MULTIPLY BY 25.4.

In keeping with our policy of continuing product improvement, Elkay reserves the right to change product specifications without notice.

This specification describes an Elkay product with design, quality and functional benefits to the user. When making a comparison of other producers' offerings, be certain these features are not overlooked.