

aquí | Texture Diagram

Notes:

Maximum panel size:

Up to 80" (2040mm) X 132" (3353mm)

Design:

An organic texture with freehand vertical markings. Directional texture that repeats every 27" (675mm)

Thickness available:

- 5/32" (4mm)
- 1/4" (6mm)
- 5/16" (8mm)
- 3/8" (10mm)

Natural color:

- Clear

Fabrication:

Contact your Authorized Distributor for more information.

Safety and security treatment options:

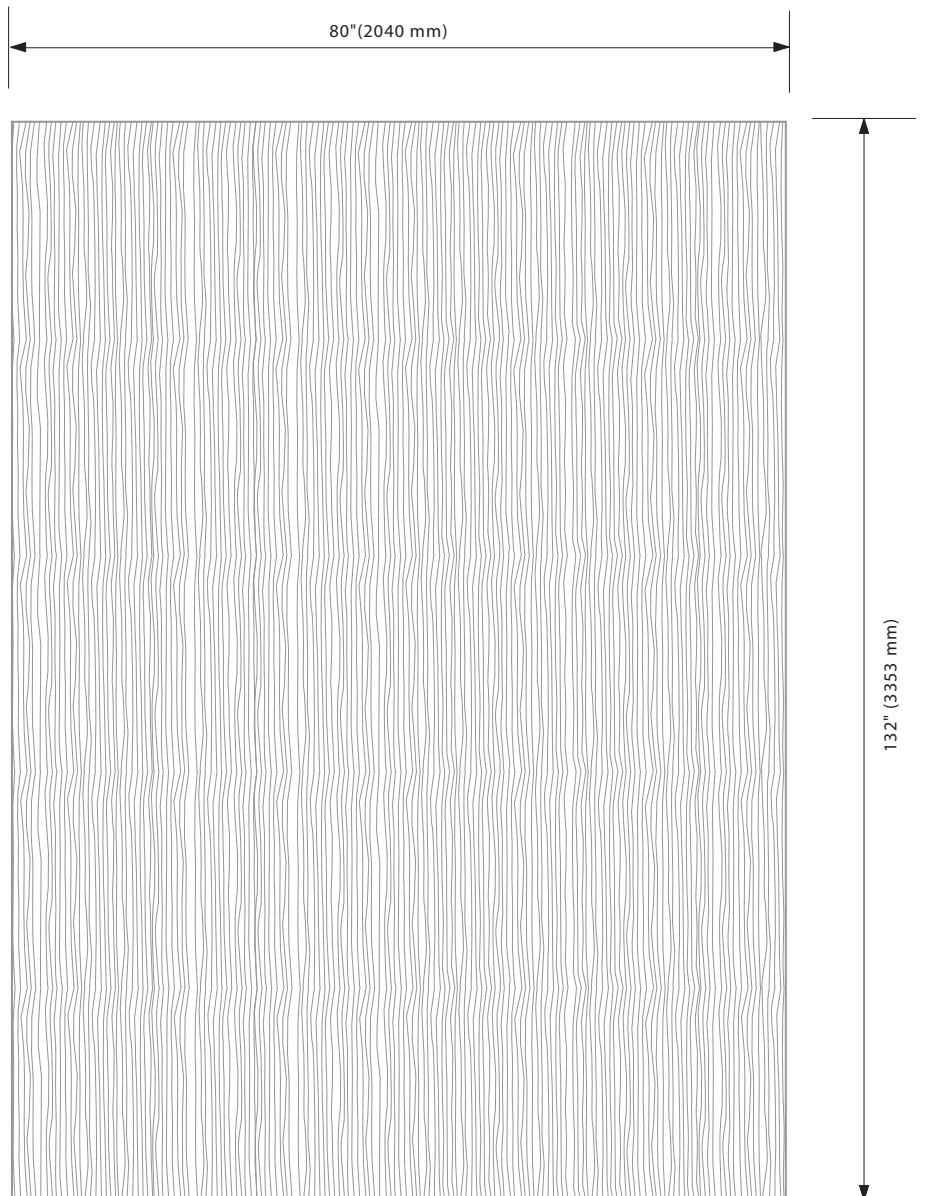
- Temper
- Laminate
- Temper and laminate
- Insulate

Design options:

Curve (Bend) · Shape (Cut) · Drill · Notch · Slump · Carve · Sandblast · Color

Edge Finish options:

- Arris
- Mitre
- Flat machine polish



Berman Glass editions 

The above diagram is a representation only. Please refer to our website or contact your Berman Glass Representative if you require additional information. All drawings and written material appearing herein constitute original and unpublished work of Joel Berman Glass Studios; and may not be duplicated without consent of Joel Berman Glass Studios.