

synèrgy

ONE WORLD. ONE COMPANY. ONE SOLUTION.

Model 300E

ThyssenKrupp Elevator Americas



ThyssenKrupp

synergy

ONE WORLD. ONE COMPANY. ONE SOLUTION.

Model 300E

ThyssenKrupp Elevator's synergy 300E offers our widest array of speeds, capacities and aesthetic options, including hospital and IBC stretcher requirements, and is fully customizable to meet your building needs.

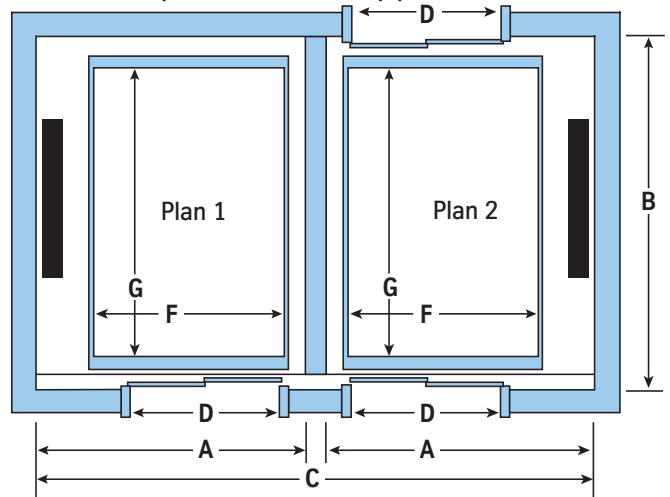
ThyssenKrupp Elevator's determination to develop the most innovative products available has allowed us to become committed to machine room-less elevator technology. synergy is a cost-efficient solution for architects, builders and building owners that uses less space and meets or exceeds today's safety standards.

synergy's compact permanent magnet gearless machine is a highly efficient sustainable solution that provides the performance of a much larger geared-driven system. These permanent magnet gearless machines, coupled with efficient drives in place of conventional geared machines, use less energy. In addition, the machines do not require contaminating gear lubricants.

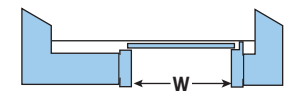
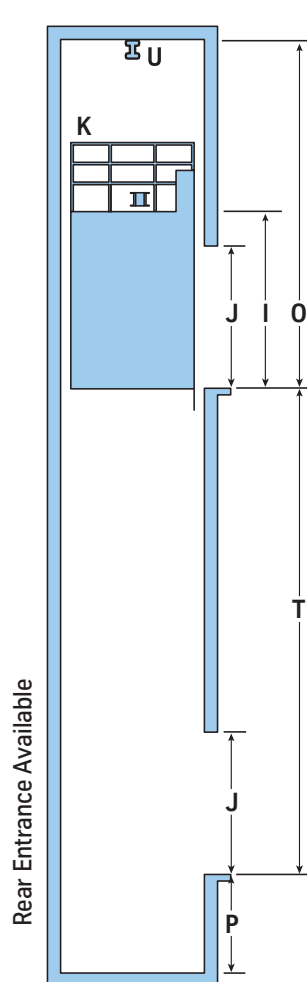
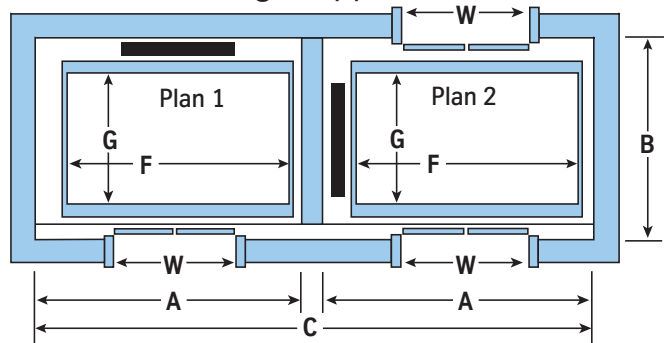
Both the counterweight and the car are roped 2:1, with standard steel ropes. Innovative design reduces hoistway footprint, as well as overhead and pit depth requirements. In fact, synergy's reduced overhead eliminates the need to alter the superstructure of roofs at all, thus giving it lower overhead requirements than other MRL systems.

It all adds up to maximum design freedom and flexibility – flexibility that allows you to design and plan without compromise. Contact your local ThyssenKrupp Elevator representative at (877) 230.0303.

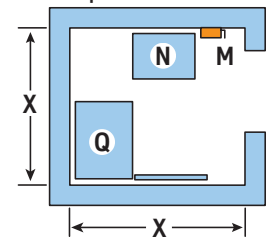
Hospital/Service Application



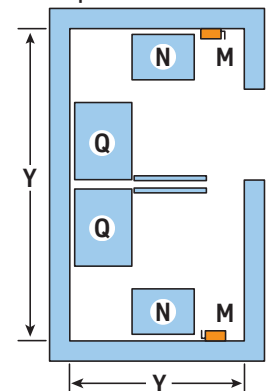
Passenger Application



Simplex Controller Closet



Duplex Controller Closet



Rear Entrance Available

plan 1

Capacity (lbs.)		2100	2500	3000	3500	4000 (IBC)	4500	5000	5000H
Speed (fpm)		200, 350	200, 350	200, 350	200, 350	200, 350	200, 350	200, 350	200, 350
		500	500	500	500	500	500	500	500
T	Maximum Travel	300'-0"	300'-0"	300'-0"	300'-0"	300'-0"	300'-0"	300'-0"	300'-0"
A	Hoistway Width	7'-4" ¹	8'-4" ¹	8'-4" ¹	8'-4" ¹	9'-4" ¹	8'-2" ²	8'-2" ²	8'-2" ²
B	Hoistway Depth	6'-8" ¹	6'-8" ¹	7'-2" ¹	7'-10" ¹	7'-10" ¹	9'-8"	10'-2"	10'-9"
C	Duplex Hoistway Width ⁷	16'-0" ¹	17'-0" ¹	17'-0" ¹	17'-0" ¹	19'-0" ¹	16'-8" ²	16'-8" ²	16'-8" ²
F	Clear Inside Width	5'-8"	6'-8"	6'-8"	6'-8"	7'-8"	5'-8"	5'-8"	5'-8"
G	Clear Inside Depth	4'-3"	4'-3"	4'-9"	5'-5"	5'-5"	7'-9 1/2"	8'-5"	9'-0"
W	Door Opening Width	3'-0" ⁶	3'-6"	3'-6"	3'-6"	4'-0" ⁴	N/A	N/A	N/A
D	Two-Speed Door Width	N/A	N/A	N/A	N/A	N/A	4'-0" / 4'-6"	4'-0" / 4'-6"	4'-0" / 4'-6"
J	Door Opening Height	7'-0"	7'-0"	7'-0"	7'-0"	7'-0"	7'-0"	7'-0"	7'-0"
I	Cab Height	7'-10"	7'-10"	7'-10"	7'-10"	7'-10"	7'-10"	7'-10"	7'-10"
P	Pit (200 fpm)	5'-0" ³	5'-0" ³	5'-0" ³	5'-0" ³	5'-0" ³	5'-0" ³	5'-0" ³	5'-0" ³
P	Pit (350 fpm)	5'-5" ³	5'-5" ³	5'-5" ³	5'-5" ³	5'-5" ³	5'-5" ³	5'-5" ³	5'-5" ³
P	Pit (500 fpm)	6'-6"	6'-6"	6'-6"	6'-6"	6'-6"	6'-6"	6'-6"	6'-6"
O	Overhead (200 fpm)	16'-0"	16'-0"	16'-0"	16'-0"	16'-0"	16'-4"	16'-4"	16'-4"
O	Overhead (350 fpm)	16'-4"	16'-4"	16'-4"	16'-4"	16'-4"	16'-4"	16'-4"	16'-4"
O	Overhead (500 fpm)	17'-6"	17'-6"	17'-6"	17'-6"	17'-6"	17'-6"	17'-6"	17'-6"
	Support Type	Machine Beams	Machine Beams	Machine Beams	Machine Beams	Machine Beams	Machine Beams	Machine Beams	Machine Beams
	Rope Size	10mm	10mm	10mm	10mm	10mm	10mm	10mm	10mm
X	Controller Closet ⁵	5'-6" x 5'-7"	5'-6" x 5'-7"	5'-6" x 5'-7"	5'-6" x 5'-7"	5'-6" x 5'-7"	5'-6" x 5'-7"	5'-6" x 5'-7"	5'-6" x 5'-7"
Y	Duplex Controller Closet ⁵	11'-6" x 5'-7"	11'-6" x 5'-7"	11'-6" x 5'-7"	11'-6" x 5'-7"	11'-6" x 5'-7"	11'-6" x 5'-7"	11'-6" x 5'-7"	11'-6" x 5'-7"
	Cwt Location	Rear	Rear	Rear	Rear	Rear	Side	Side	Side
	Roping	2:1 Overslung	2:1 Overslung	2:1 Overslung	2:1 Overslung	2:1 Overslung	2:1 Overslung	2:1 Overslung	2:1 Overslung

plan 2

Capacities and Speeds are the same as above									
T	Maximum Travel	N/A	300'-0"	300'-0"	300'-0"	N/A	300'-0"	300'-0"	300'-0"
A	Hoistway Width	N/A	9'-2" ²	9'-2" ²	9'-2" ²	N/A	8'-2" ²	8'-2" ²	8'-2" ²
B	Hoistway Depth	N/A	6'-8 3/4"	7'-2 3/4"	7'-10 3/4"	N/A	10'-9 1/4"	11'- 4 3/4"	11'-11 3/4"
C	Duplex Hoistway Width ⁷	N/A	18'-8" ²	18'-8" ²	18'-8" ²	N/A	16'-8" ²	16'-8" ²	16'-8" ²
F	Clear Inside Width	N/A	6'-8"	6'-8"	6'-8"	N/A	5'-8"	5'-8"	5'-8"
G	Clear Inside Depth	N/A	4'-3 1/2"	4'-9 1/2"	5'-5 1/2"	N/A	7'-10"	8'-5 1/2"	9'-0 1/2"
W	Door Opening Width	N/A	3'-6"	3'-6"	3'-6"	N/A	4'-0" / 4'-6"	4'-0" / 4'-6"	4'-0" / 4'-6"
D	Two-Speed Door Width	N/A	N/A	N/A	N/A	N/A	4'-0" / 4'-6"	4'-0" / 4'-6"	4'-0" / 4'-6"
J	Door Opening Height	N/A	7'-0"	7'-0"	7'-0"	N/A	7'-0"	7'-0"	7'-0"
I	Cab Height	N/A	7'-10"	7'-10"	7'-10"	N/A	7'-10"	7'-10"	7'-10"
P	Pit (200 fpm)	N/A	5'-0" ³	5'-0" ³	5'-0" ³	N/A	5'-0" ³	5'-0" ³	5'-0" ³
P	Pit (350 fpm)	N/A	5'-5" ³	5'-5" ³	5'-5" ³	N/A	5'-5" ³	5'-5" ³	5'-5" ³
P	Pit (500 fpm)	N/A	6'-6"	6'-6"	6'-6"	N/A	6'-6"	6'-6"	6'-6"
O	Overhead (200 fpm)	N/A	16'-4"	16'-4"	16'-4"	N/A	16'-4"	16'-4"	16'-4"
O	Overhead (350 fpm)	N/A	16'-4"	16'-4"	16'-4"	N/A	16'-4"	16'-4"	16'-4"
O	Overhead (500 fpm)	N/A	17'-6"	17'-6"	17'-6"	N/A	17'-6"	17'-6"	17'-6"
	Support Type	N/A	Machine Beams	Machine Beams	Machine Beams	N/A	Machine Beams	Machine Beams	Machine Beams
	Rope Size	N/A	10mm	10mm	10mm	N/A	10mm	10mm	10mm
X	Controller Closet ⁵	N/A	5'-6" x 5'-7"	5'-6" x 5'-7"	5'-6" x 5'-7"	N/A	5'-6" x 5'-7"	5'-6" x 5'-7"	5'-6" x 5'-7"
Y	Duplex Controller Closet ⁵	N/A	11'-6" x 5'-7"	11'-6" x 5'-7"	11'-6" x 5'-7"	N/A	11'-6" x 5'-7"	11'-6" x 5'-7"	11'-6" x 5'-7"
	Cwt Location	N/A	Side	Side	Side	N/A	Side	Side	Side
	Roping	N/A	2:1 Overslung	2:1 Overslung	2:1 Overslung	N/A	2:1 Overslung	2:1 Overslung	2:1 Overslung

Hoistway dimensions are based on 1" out of plumb and no occupied space below the hoistway. If these conditions cannot be met, then consideration must be given for additional required space.

Hoistway temperature range = 32° F minimum, 122° F maximum.

1 Seismic Zones 2 and greater, add 4" additional hoistway width (8" for duplex) and 2" additional hoistway depth.

2 Seismic Zones 2 and greater, add 7" additional hoistway width (14" for duplex).

3 Pit Ladder (P) by others. ETSL (350 fpm) or Oil Buffers (200 fpm) required to meet 2000 code. Consult ThyssenKrupp Elevator for pit requirements with travel over 250'-0".

4 To meet the requirements of IBC Code for 84" stretchers, a 4'-0" Center-Opening or 3'-6" Side-Slide (Single-Speed) door is required. Contact your local TKE office for requirements in your jurisdiction.

5 Controller closet temperature range 32° F. Min., 104° F. Max. 10% - 95% Non-Condensing Relative Humidity. (M) Disconnect by others. (N) - Isolation Transformer (as required). (Q) - Controller.

Additional controller closet space may be required with security cabinet or additional electrical boxes or features.

6 Center-Opening doors are not available on this model. 3'-0" Side-Slide (Single-Speed) doors are standard.

7 Duplex hoistway size includes 4" allowance for divider beam.

NOTE: (K) represents Car Top Railing, if required. 5,000 lb capacity safety beam (U) is by others.

ThyssenKrupp Elevator | P.O. Box 2177 | Memphis, TN 38101
Tel: (877) 230-0303 (toll free) | thyssenkruppelevator.com | version 05.19.10
All illustrations and specifications are based on information in effect at time of publication approval. ThyssenKrupp Elevator reserves the right to change specifications or design and to discontinue items without prior notice or obligation. Copyright © 2010 ThyssenKrupp Elevator Corporation.

