

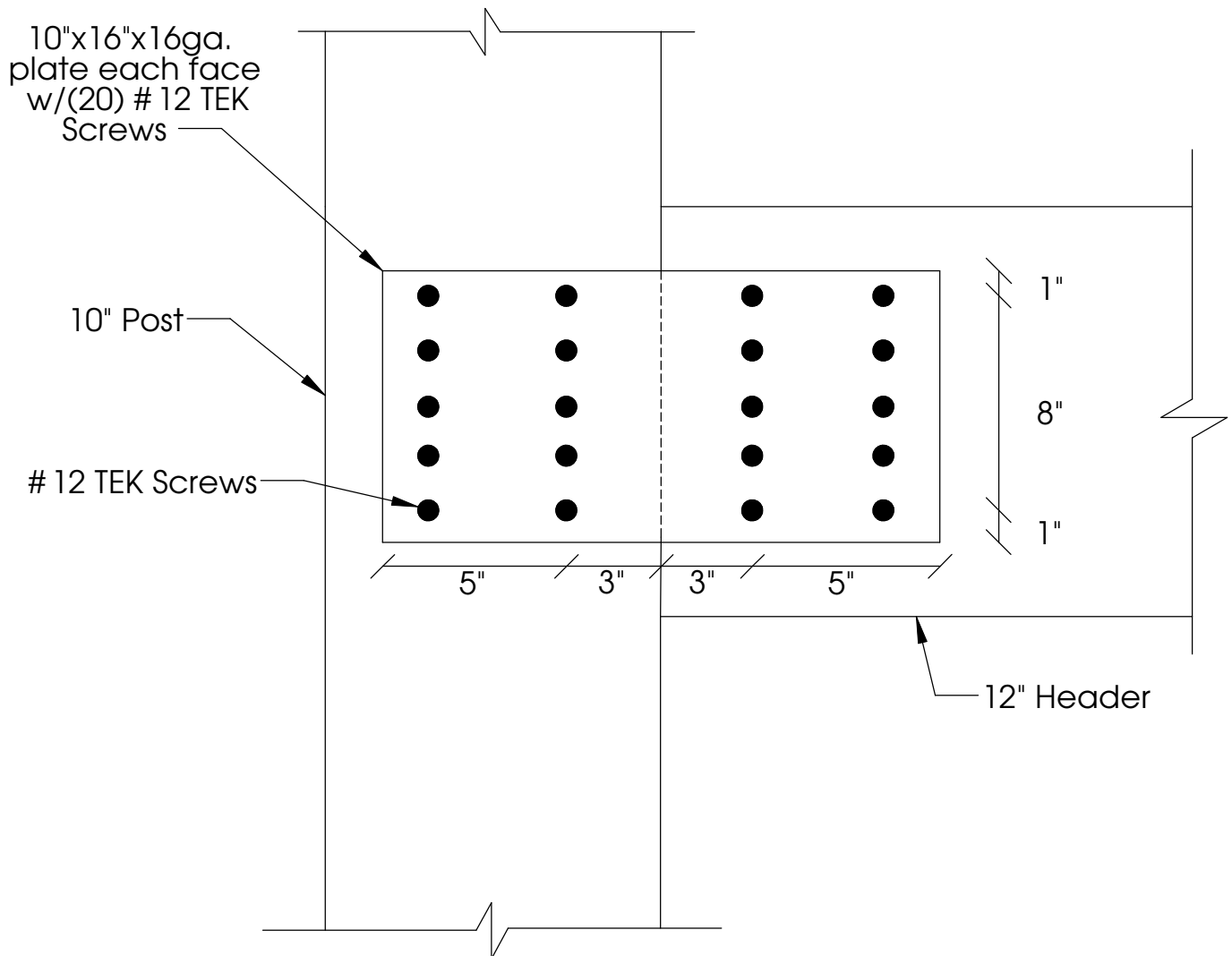
NOTE:

300 plf load with no roof: 8' tributary = 2400 lbs.

1160 plf load with roof: 8' tributary = 9300 lbs.

16 ga. material thickness (posts) - use the same for the gussets on each face of header.

12 TEK screws good to 540 lbs/screw



JTC

TITLE:

Garage Header Connection

ProTEC
CONCRETE STRUCTURAL INSULATED PANEL SYSTEM

REV:

8/14/06

NO:

AK-2