

connect blocking to
with Simpson "A34" clip
@ each end

2x4 blocking between trusses
@ 24" o.c. connect to top plate
w/ (2) 4"+ lag screws

(24) - # 12 TEK
screws along
track

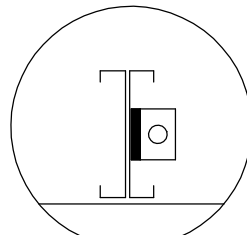
(24) # 12 TEK
screws along
double stud

(16) # 12 TEK
screws from
brace to gusset

3" 14ga. metal
strap

16"sq. x 16ga.
gusset plate
@ ends of
brace

4" embedment
into slab



top view

Simpson hold down anchor
"HDU-4" - attach to studs (dbl.
25ga. studs req'd) w/ (10) 4" TEK
screws and concrete 5/8" dia.
threaded rod - 4" emd't and
Simpson "ET" adhesive

JTC

Drawing Not To Scale

TITLE:

Sheer Wall Configuration

ProTEC

CONCRETE STRUCTURAL INSULATED PANEL SYSTEM

REV:

10/2/06

NO:

AK-6