

Start-Up Equipment Packages



WaterKat Trailer



WaterKat



SpaceSaver



HotShot

**IMPROVE
POURED WALL
QUALITY &
PROFITS**



Waterproofing and Basement Products



Don't Let Inferior Waterproofing Undermine The Quality of Your Poured Walls

As a poured wall professional, you've succeeded by doing things right.

But once you pull your forms, **your walls stand exposed to subcontractors who can damage your product and bury the evidence**, with the potential to haunt you later on.

Since you're already a trusted contractor, adding waterproofing can save your builders time, improve consistency, and differentiate you from other contractors who just pour, pull, and push on.

As you know, the foundation waterproofing industry lacks strict standards and oversight, and is chaotic and fragmented, at best. That's your opportunity to step it up and make a difference.

Mar-flex START-UP Packages Can Have You Up and Running in 30 Days

By managing all aspects of the foundations you install – including water protection – you can secure your builder relationships, enhance your reputation, and depending on how many foundations you average, the revenue potential can get very exciting, very quickly.

DO THE MATH:

<input type="text"/>	sq. ft.	x \$	<input type="text"/>	= \$	<input type="text"/>	x .50 = \$	<input type="text"/>
(wall face sq. ft.)			(membrane & board cost)		(gross income)		(net income)
1,000	sq. ft.	x \$	1.75*	= \$	1,750	x .50 = \$	875
(wall face sq. ft.)			(membrane & board cost)		(gross income)		(net income)

*This financial example is for illustrative purposes only and is based on pricing averages across the U.S.

**If you pour 50 foundations @ 1,000 sq. ft. each,
you can add \$87,500 to your top line.
At NET 50%, you'll put \$43,750 in your pocket!***



Get The Equipment and Training You Need To Become a Waterproofing Pro

7 Reasons Why YOU Should Waterproof the Walls You Pour

1. Control over quality and consistency, pre-backfill
2. Stronger builder relationships as one-stop provider
3. Fewer call-backs for you, and the builder
4. Defense against competitors who pour walls and waterproof
5. Additional profitable revenue stream
6. Low cost of entry, less than \$25,000
7. Up to 60-year performance guarantee against foundation leaks

Mar-flex has designed four, all-inclusive START-UP packages to help you move from poured-wall contractor to a foundation protection pro.

Designed for simple installation in a variety of vehicle configurations, Mar-flex spray units are turnkey systems that have been field-tested in climates across the country.

Count on Mar-flex for Expert Help, Every Step of the Way

Mar-flex equipment packages make it easy to turn your poured wall bids into more profitable opportunities.

Each package contains the equipment and supplies necessary to start waterproofing immediately. The only thing left to choose is which membrane, drainage board and drain tile you'll use.

You Can Waterproof Most Foundations in About 4 Man Hours



Patch with Mastic



Spray Membrane



Install Drainage Board



Attach Drainage Tile

WaterKat Trailer Spray Package

Dimensions

Length.....19' 10"

Width.....7' 3"

Height.....9'

Dry

Weight3,200 lbs

Tank

Capacity.....160 Gallons

PumpGear Pump

Max Tip Size0.067

Delivery5.00 US gpm

Working

Pressure.....1,200 PSI

Engine8 HP Honda

Hose.....150' Insulated
Airless with
Scuff Jacket

Vehicle

Requirement.....¾ Ton



Start-Up Package Includes:

- Break-A-Way Knives
- 1" Board Fasteners
- 1 ¼" Board Fasteners
- 1 ½" Board Fasteners
- 2 ½" Board Fasteners
- Deluxe Footer Broom
- 5 Gallons Spring/Fall Mastic
- Geo-Clips
- Diaphragm Transfer Pump
- Box of Hooded Coveralls
- PVC Gloves
- 2 Respirator Face Pieces
- Organic Vapor Cartridge
- Particulate Filter
- HEPA Piggyback adaptor
- 86" Spray Wand
- Footer Shovel
- Wall & Footer Scraper

Our Water-Based WaterKat in a Self-Contained Heated Trailer

- Hydronic Diesel Fired Heating Unit (burns ¼ gal per 4 hours)
- Fully Insulated Trailer
- Extruded Aluminum Flooring
- Deep Cycle Battery with On-board charger
- Shore Line hook-up for power to recharge battery
- External Mounted Heating Unit & Diesel/Coolant Tanks
- Internal Adjustable Thermostat & On/Off switch

Heated trailer keeps product warm

The Hydronic Unit has a built-in water pump that heats and pumps antifreeze through the system similar to a vehicle's coolant system. The coolant heats the heat exchanger that warms your material to maintain consistent product flow and spray temperature.



WaterKat Spray Package



Dimension

Length.....84"

Width.....44"

Height.....41"

Dry

Weight825 lbs

Wet

Weight1,825 lbs

Tank

Capacity.....125 Gallons

PumpGear Pump

Max Tip Size0.067

Delivery5.00 US gpm

Working

Pressure.....1,200 PSI

Engine8 HP Honda

Hose.....150' Insulated
Airless with
Scuff Jacket

Vehicle

Requirement $\frac{3}{4}$ Ton

Our Top-Selling Water-Based Spray System

- 150' of Insulated Hose with Scuff Jacket
- 1/2" x 125' & 3/8" x 25'
- Electric Hose Reel
- S-5 Spray Gun w/Heavy-Duty Swivel
- 24" Tube-in-Shell Heat Exchanger
- 125 Gallon Poly Tank

Quality control at your fingertips

- Heat Controls for the Heat Exchanger
- Analog Spray Temperature Gauge
- Analog Pressure Display
- Recirculation Valve

Start-Up Package Includes:

- Diaphragm Transfer Pump
- Equipment Installation Kit

Waterproofing and Basement Products

1-800-498-1411 • Mar-flex.com

SpaceSaver Spray Package

Dimensions

Length.....48"

Width.....48"

Height.....44"

Dry

Weight800 lbs

Wet

Weight1,752 lbs

Tank

Capacity.....119 Gallons

PumpGraco

Gmax II 7900

Max Tip Size0.048

Delivery2.2 US gpm

Working

Pressure.....3,300 PSI

Engine6.5 HP Honda

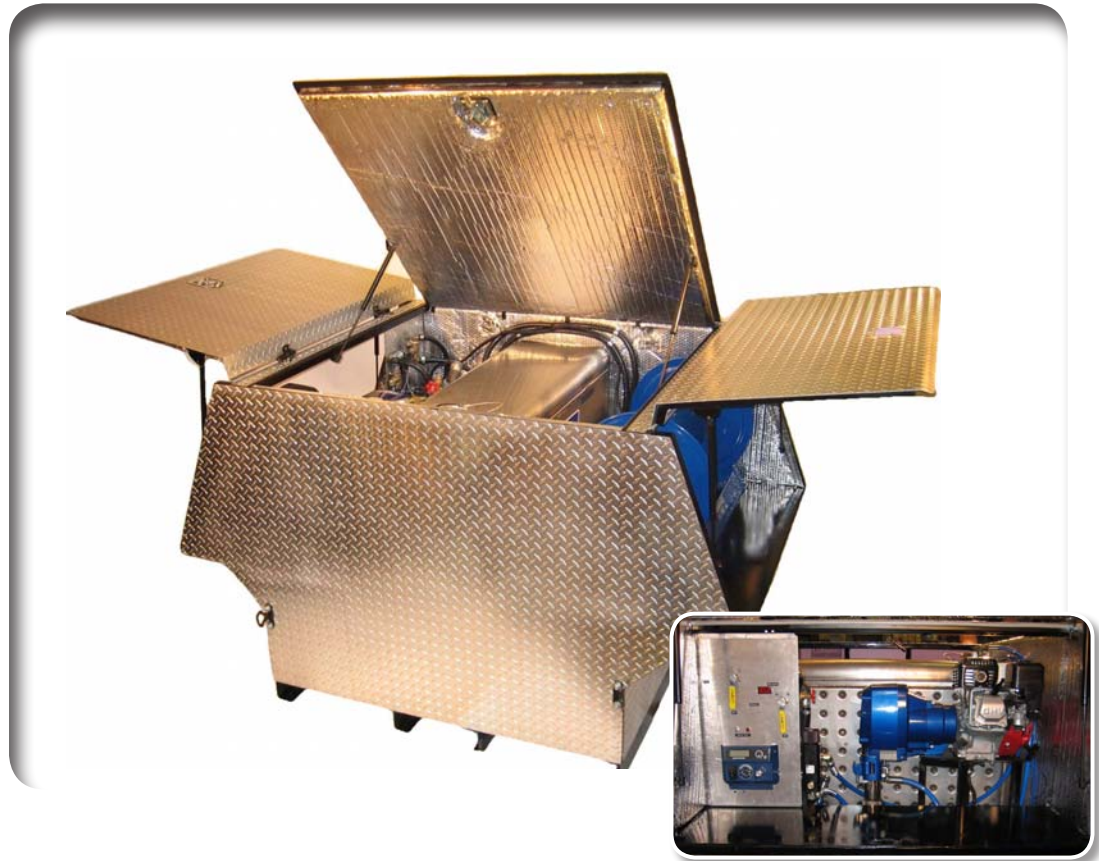
Hose.....150' Insulated

Airless with

Scuff Jacket

Vehicle

Requirement 3/4 Ton



Our Insulated Water-Based SpaceSaver Fits In a Pick-Up Bed

- Proven Graco GMax II 7900 w/Pro Connect
- 150' of Insulated Hose with Scuff Jacket
- 1/2" x 100' & 3/8" x 50'
- Electric Hose Reel
- S-5 Spray Gun with Heavy-Duty Swivel
- 24" Tube-in-Shell Heat Exchanger with Digital Temperature Read Out
- Stainless-Steel Heated Tote with Dimpled Jacket
- Diamond Plate Wrap – Hemispherically Sealed

Start-Up Package Includes:

- Diaphragm Transfer Pump
- Equipment Installation Kit

Uncomplicated and easy to use

- Heat Controls for the Heat Exchanger & Heated Tank
- Digital Display for Spray Temperature
- Pump Pressure Control & On/Off Switch
- Digital Pressure Display & Pump Diagnosis
- Re-circulate Valve & Manifold Filter
- Male/Female Quick Disconnects for coolant hoses
- Trailer Light Plug-in for lights and electrical



HotShot Spray Package



Dimensions

Length.....80"

Width.....48"

Height.....46"

Dry

Weight1,635 lbs

Wet

Weight2,579 lbs

Tank

Capacity.....118 Gallons

PumpSpeeflo
PowrTwin™
12000

Max Tip Size0.058

Delivery 2.2 US gpm

Working

Pressure..... 3,300 PSI

Engine 9 HP Honda

Hose..... 150' Insulated
Airless with
Scuff Jacket

Vehicle ¾ Ton

The Ultimate Solvent-Based Spray System

- 150' of Insulated Hose with Scuff Jacket
- 1/2" x 125' & 3/8" x 25'
- Electric Hose Reel
- S-5 Spray Gun w/Heavy-Duty Swivel
- 24" Tube-in-Shell Heat Exchanger

Fast, efficient and user-friendly

- Front-Mounted Controls
- Slide out tray for easy pump maintenance
- Heat Controls for the Heat Exchanger & Heated Tank
- Display for Spray Temperature
- Pump Pressure Control
- Analog Pressure Display
- Recirculation Valve

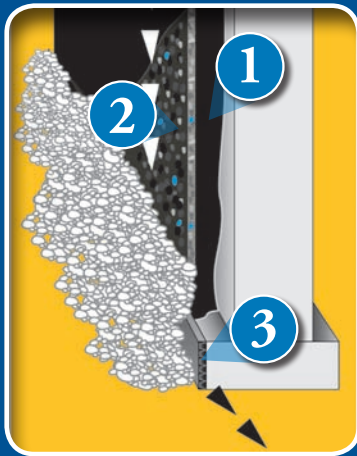
Start-Up Package Includes:

- 1:1 Transfer Pump
- 2 Drum Band Heaters
- 55 Gallon Drum Blanket
- Transfer Pump Hose
- 2 Respirator Face Pieces
- Organic Vapor Cartridge
- Particulate Filter
- HEPA Piggyback Adaptor
- Quick Disconnect
- Equipment Installation Kit

Waterproofing and Basement Products

1-800-498-1411 • Mar-flex.com

Improve Your Bottom Line With The Best Waterproofing Products In The Business



The Mar-flex 3-Step System

- 1** Continuous, seamless spray-on membrane seals each exterior wall.
- 2** Drainage board protects and insulates the wall, and channels water down and away.
- 3** Drainage tile then transports water away from the foundation.



60 YEAR GUARANTEE

The Mar-flex 5000 / 2" Shockwave / Drain-A-Way System guarantees protection from water leakage and seepage for years to come.



Mar-flex 5000™
Membrane

Solvent-Based – For 15 years, solvent-based “5000” has been the industry’s gold standard. It’s tough, flexible, and provides superior waterproofing, even as a foundation settles. It’s less susceptible to freeze/thaw cycles, has a very long shelf life, and is easy to ship and store.

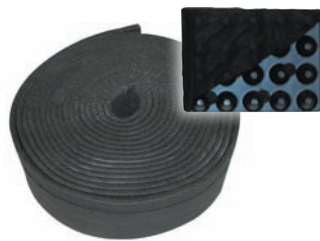
Water-Based – Our water-based “5000” is an eco-friendly GREEN product that is tough, flexible, and provides excellent waterproofing. In cold conditions, water-based membrane requires heated storage – for trucks, spray equipment and membrane materials.



Shockwave™
Drainage
Board

Shockwave does more than just cover the membrane – it channels away water, protects membrane from damage during backfill, and insulates the wall. Made of environmentally friendly closed-cell foam, it delivers superior water channeling and R-Value in an easy-to-hang product. Available in 1" and 2" thicknesses.

**MOST INNOVATIVE PRODUCT
EXPERTS CHOICE AWARD
2007 WORLD OF CONCRETE**



Drain-A-Way™
Drainage Tile

Drain-A-Way’s 3-dimensional, high-flow drainage core wrapped with a non-woven filter fabric runs along the base of the footer to channel water away from the foundation. It replaces conventional gravel-covered pipe drains and is available in 6" and 12" heights, 165 ft. /roll.



Waterproofing and Basement Products
1-800-498-1411 • Mar-flex.com