

Lighting system to be set into the ground. Wall grazing light emission. Body in extruded aluminium. Asymmetric reflector for low-angle light. Screen, without frame, in sandblasted glass stuck onto the main body. For installation an housing kit and closing plugs are required.

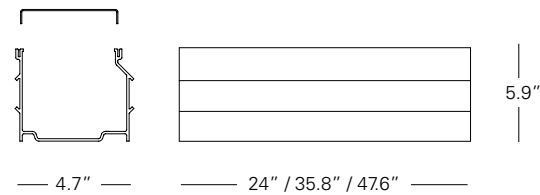
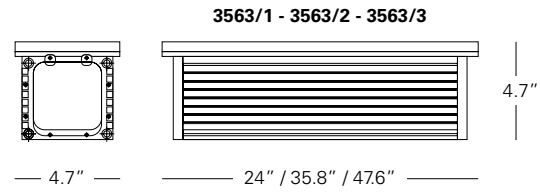
Aparato con sistema de iluminación a luz rasante para empotrar en el suelo. Cuerpo de aluminio extrudido. Reflector asimétrico para luz rasante. Vidrio, sin marco, templado arenado pegado al cuerpo principal. Para el montaje es necesario una kit de carcasa y tapones de cierre.

Système d'éclairage à lumière rasante à encastrer au sol. Corps en aluminium extrudé. Réflecteur asymétrique pour éclairage rasant. Verre trempé sablé, exempt de cadre, collé au corps principal. Pour l'assemblage, prévoir un kit coffre et des bouchons de fermeture

Raso IP67

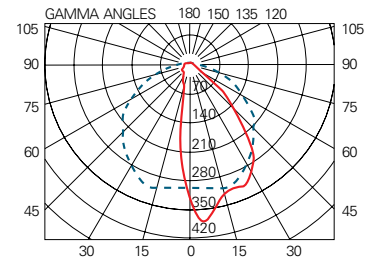
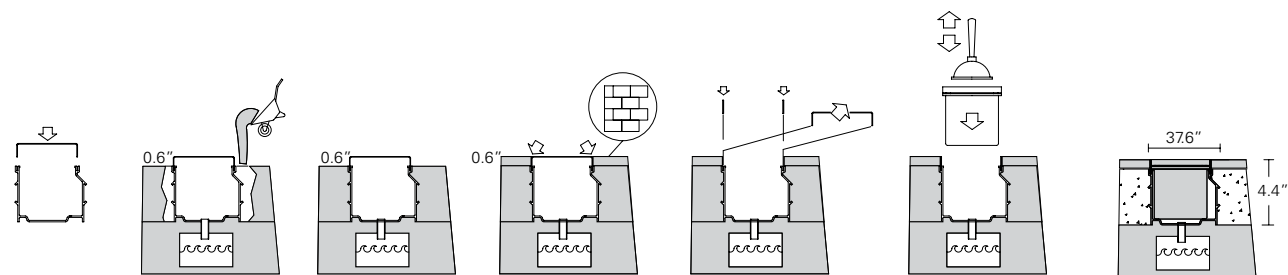
3563/1	24"		1x24W T5 G5 (FL)
3563/2	35.8"		1x39W T5 G5 (FL)
3563/3	47.6"		1x54W T5 G5 (FL)

Pending Suitable for wet location - Dimmable ballast upon request IP67

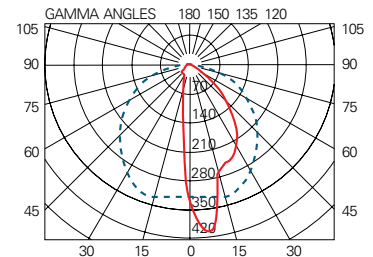


Housing kit / Carcasa / Coffre
 A3550/1 24"x5.9"x4.7"
 A3550/2 35.8"x5.9"x4.7"
 A3550/3 47.6"x5.9"x4.7"

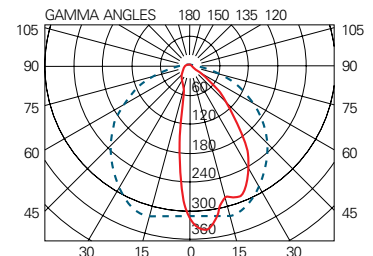
Closing plugs
 Tapones para carcasa
 Bouchons pour coffre
 A3593 5.5" x 5.2"



3563/1 Output 52,22%



3563/2 Output 52,07%



3563/3 Output 51,86%

Bocconi University - Milan (Italy)