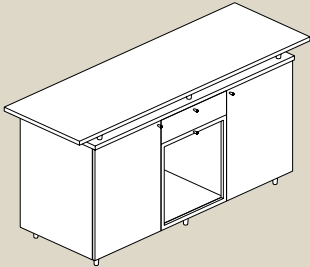
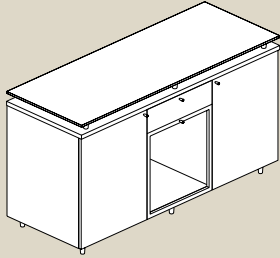
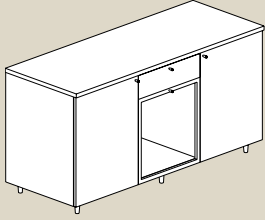


A HIGHER FORM OF FUNCTION



BRETFORD



## TRU AV CREDENZA

- ▶ Tru AV Credenza has a center door to transmit infrared remote control signals. Fit a flat screen monitor on the wall above and a refrigerator in one of the compartments to suit multiple tasks in your conference room.



TCRA32F AV credenza with maple veneer and stainless steel hardware. Floating top is in frosted glass 24" x 63".



Modular stainless steel drawer inserts are standard with all credenzas.



Four adjustable height wood shelves are standard with all credenzas. The shelves may be removed to add a refrigerator.



Frosted glass door allows remote controls to function properly while the door is closed.



**BRETFORD**

11000 SEYMOUR AVENUE  
FRANKLIN PARK, ILLINOIS 60131 USA  
TOLL FREE PHONE 800-521-9614  
PHONE 847-678-2545  
TOLL FREE FAX 800-343-1779  
FAX 847-678-0852

WWW.BRETFORD.COM

## TRU AV CREDENZA

### KEY FEATURES

Compartments are spacious enough to fit a mini-fridge. Interior shelves are height adjustable. Modular stainless steel utensil organizer stores silverware and packaged condiments. Available with or without a floating top. Wood and frosted glass tops are available in two lengths: 63"l to sit flush with the edges or 79"l to extend the service area. Each interior compartment has two 3" grommet holes for cords and refrigerator ventilation. Center compartment has a 4-outlet surge protected power strip.

### DIMENSIONS

#### BASE CABINET W/O FLOATING TOP

79"W x 24"D x 32"H (200 x 61 x 81 cm)

#### LEFT OR RIGHT INTERIOR COMPARTMENT

20"W x 22"D x 27"H (51 x 59 x 68 cm)

#### CENTER COMPARTMENT

20"W x 22"D x 20"H (51 x 59 x 51cm)

#### DRAWER INTERIOR

19 1/2"D x 18 3/4"W x 4"H (49 x 47 x 5 cm)

#### FLOATING WOOD TOP

63 or 79"W x 24"D x 1"H (160 or 200 x 61 x 3 cm)

#### FLOATING GLASS TOP

63 or 79"W x 24"D x 1/2"H (160 or 200 x 61 x 1 cm)

### CONSTRUCTION

#### BASE

Base is constructed of 3/4" thick particle board and architectural grade veneer with a UV finish.

#### COMPARTMENTS

Left and right compartments will hold a refrigerator up to 19 7/8" D x 18 5/8" W x 25 1/8" H

#### SHELVES

Four wood shelves are height adjustable using the 32 mm pin system.

#### FLOATING WOOD TOP

Floating wood top edges are offered in 3mm hardwood, petite waterfall, MDF knife, or profile edge.

#### FLOATING GLASS TOPS

Glass floating top is frosted and tempered with a protective coating to help prevent fingerprints.