

FOLDING BRACKET

LOAD CAPACITY
35~80 kg
77~176 lbs

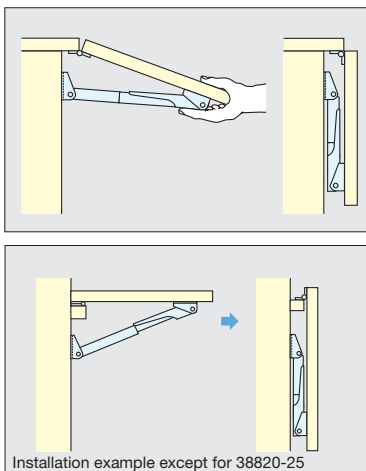
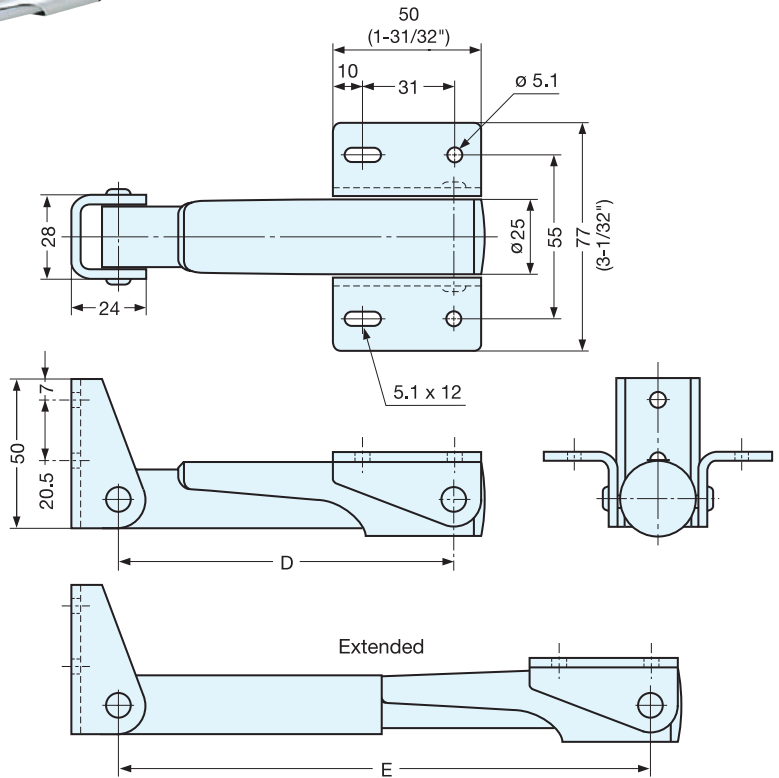
NO SCREW

ALUMINUM

388

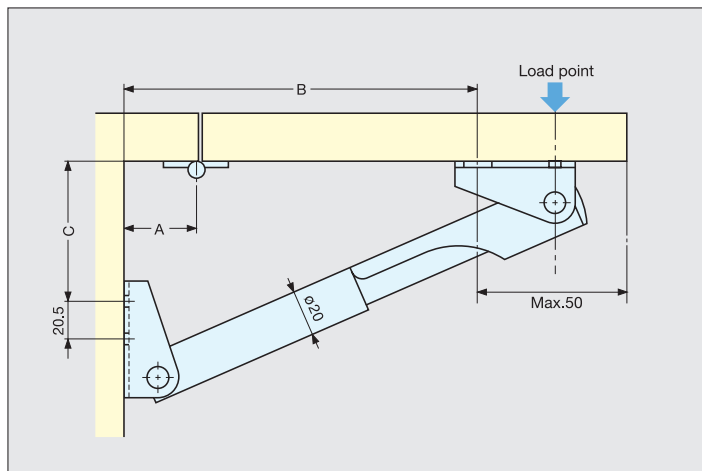


- Automatically locks when flap is in open position.
- Has release lever for un-locking.
- For panel thickness 15~35mm (19/32"~1-3/8")
- Required Quantity:
Width up to 600mm (23-5/8"...1pc)
Width 600~1300mm (23-5/8"-51-3/16"...2pcs)



Installation example except for 38820-25

Installation



Material	Finish
Aluminum	Anodized

Item No.	A	B	C	D	E	Load Capacity (kg)	Weight (g)	Box (pcs)	Carton (pcs)
38820-25	25 ~ 30	161	14	114	180	35 (77 lbs)	149	5	50
38830-25	25 ~ 39	252	45	168	275.9	55 (121 lbs)	187		30
38845-25	25 ~ 50	402	87	258.5	430.8	60 (132 lbs)	266		
38860-25	25 ~ 40	549	137	368.5	585.8	80 (176 lbs)	342		