



Washout Wall Hung Urinal
Vitreous China

FEATURES

- **7121 Bedford™**

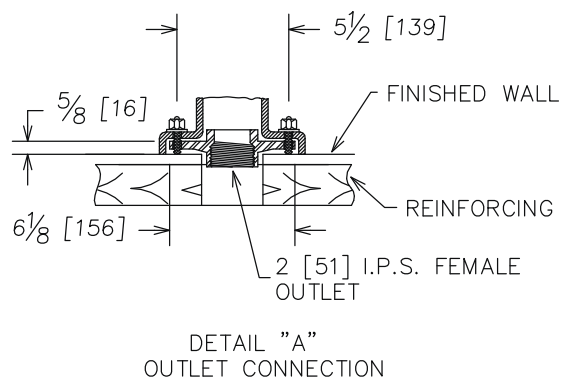
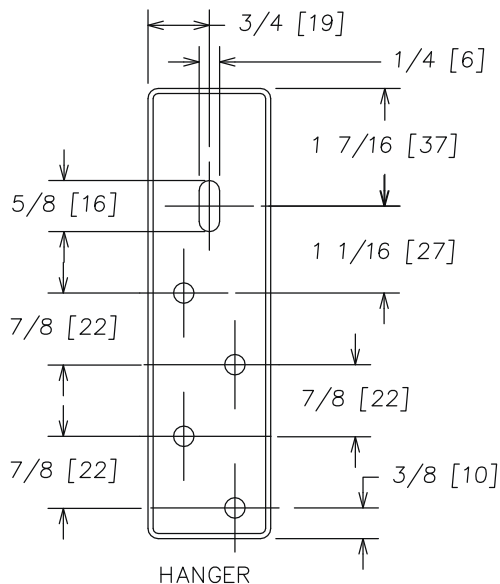
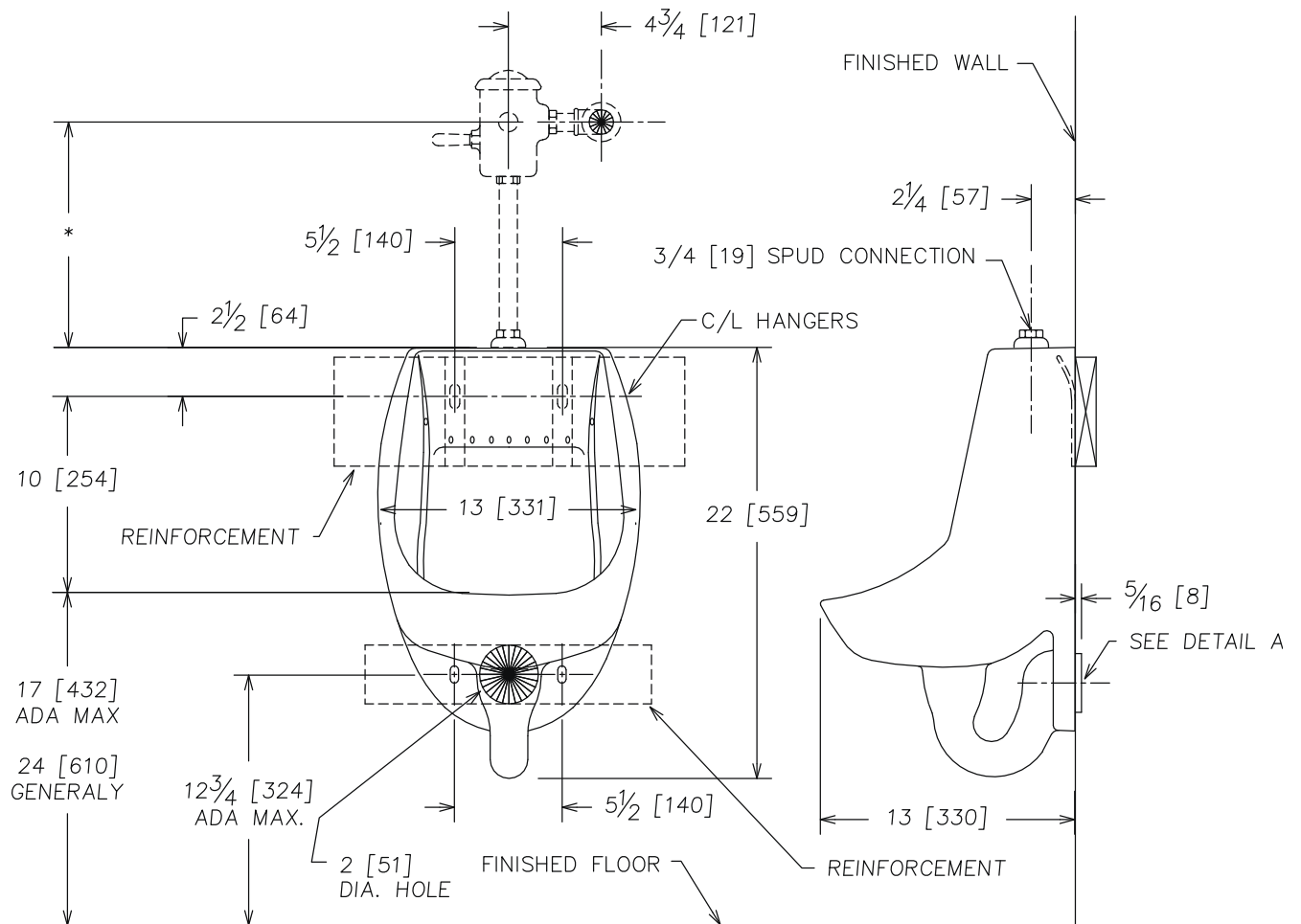
7121 Bedford™ (1.0 gpf / 3.8 lpf) washout vitreous china, wall-hung urinal with integral trap and strainer, $\frac{3}{4}$ " top spud, 2" I.P.S. female back outlet connection and supporting hanger.

Valve:* Unit is designed for $\frac{3}{4}$ " (1.0 gpf / 3.8 lpf) top inlet flush valve. Refer to flush valve manufacture's instructions and local codes for rough-in information.

Support: Wall mounted with supplied concealed hanger and supporting bolts.

NOTES

- Fixture conforms to ANSI/ASME A112.19.2M standard.
- For efficient operation of the urinal, a minimum flowing water pressure of 15 P.S.I. is required at the valve.
- ADA Compliant when mounted at 17" maximum height.



NOTE: * VARIABLE-CHECK WITH MANUFACTURER OF FLUSH VALVE FOR PROPER ROUGHING-IN DIMENSIONS.
 ** FIXTURE COMPLIES WITH AMERICANS WITH DISABILITIES ACT WHEN MOUNTED AT RIM HEIGHT OF 17".

IMPORTANT: Roughing-in dimensions may vary $\frac{1}{2}$ " and are subject to change or cancellation without prior notice.
 No responsibility is assumed for use of superseded or voided leaflets.