



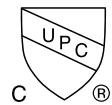
Features

- *Low Water Consumption
.5 gpf / 1.9 lpf - 1 gpf / 3.8 lpf*
- *18" [457mm] Wide with Integral Extended Shields*
- *14" [356mm] Lip Flushing Rim and Integral Trap*
- *Wall Mounted Design complete with Concealed Hangers*
- *Vitreous China Construction*
- *Available in White Only*
- *Limited Lifetime Warranty*



Model #	Description
7399	Washout wall hung urinal with 3/4" [19mm] top spud with 14" integral lip, integral trap, and concealed hangers. Less flush valve

High Efficiency Urinal
HEU



Specifications

Water Pressure Range: 20 to 80 P.S.I.

Flush System: Washout

Water Usage: .5 gpf / 1.9 lpf - 1 gpf / 3.8 lpf

Spud: 3/4" [19mm] top

I.P.S: 2" [51mm] female outlet connection

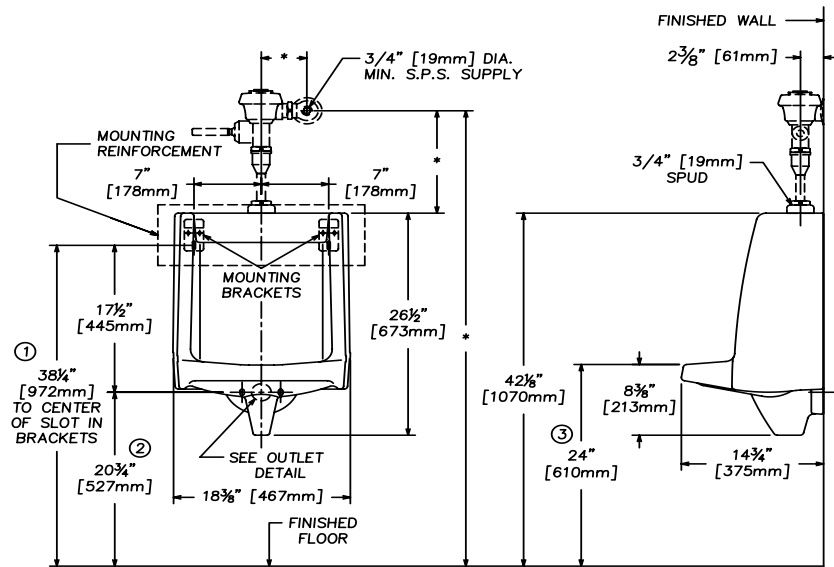
Shipping Cubes: 5.5 cf.

Shipping Weight: 55 lbs.

Warranty:

Vitreous China - Limited Lifetime

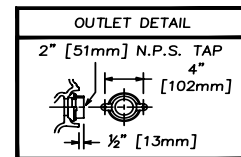
Parts - One Year Limited



NOTE: * VARIABLE - CHECK WITH MANUFACTURE OF FLUSH VALVE FOR PROPER ROUGHING-IN DIMENSIONS.

ADA INSTALLATION	
1	31 1/4" [794mm]
2	13 3/4" [349mm]
3	17" [433mm]

NOTE: OUTLET CONNECTION 2" [51mm] FEMALE THREADS - PROTRUDE 1/2" [13mm] PAST THE URINAL.



IMPORTANT: These dimensions are nominal and may vary within the range of tolerances established by ASME Standard A 112.19.2 Contact your local building code for approved barrier free measurements.

Customer Service United States
41 Cairns Road
Mansfield, OH 44903
Email: customerservice@craneplumbing.com

Customer Service Canada
15 Crane Ave.
Stratford, ON N5A 6T3
Email: sales@craneplumbing.com