



## Siphon Jet Urinal

Vitreous China

### FEATURES

- **7361 Embassy™**

7361 Embassy™ (1.0 gpf / 3.8 lpf) low consumption vitreous china siphon jet urinal with integral extended shields and 14" [356] lip, flushing rim and trap, 3/4" [19] back spud, 2" [51] I.P.S. female outlet connection, and supporting hangers.

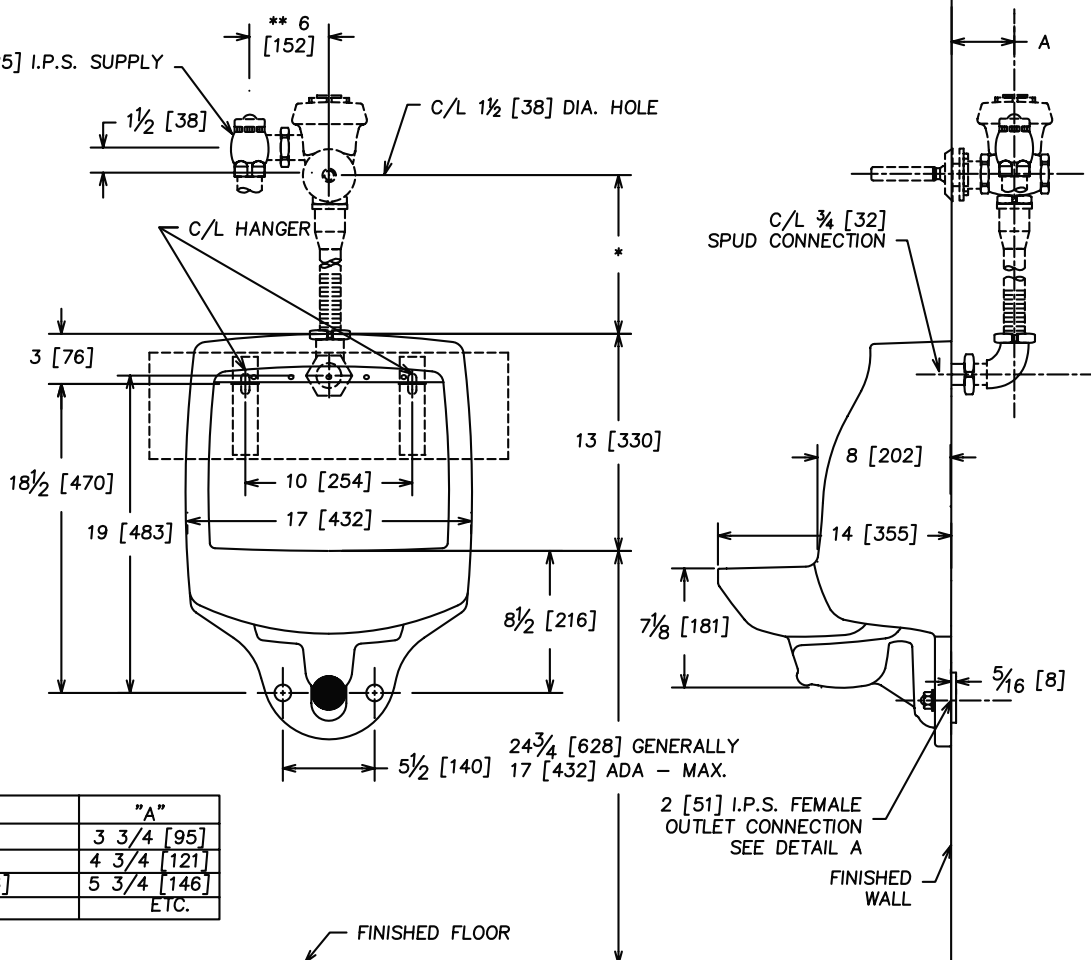
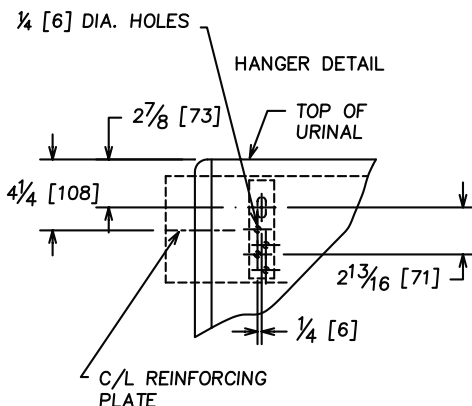
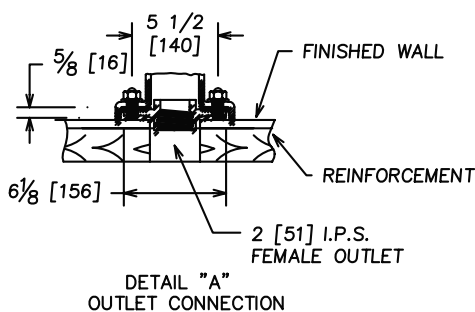
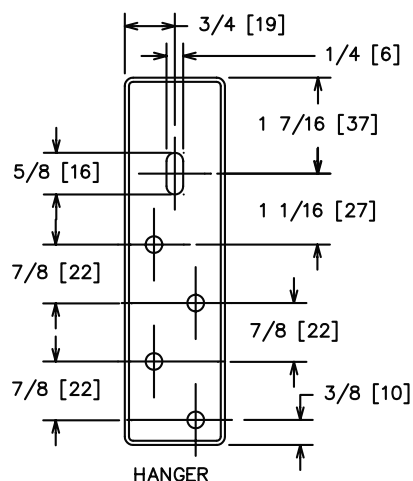
**Valve:**\* Flushvalve with vacuum breaker, 1" [25] angle screwdriver stop and flush connection. Suggested (1.0 gpf / 3.8 lpf) flushvalves are:

Sloan "Royal"	#195-1
Delany "Flushboy"	#F571-1
Zurn "Aquaflush"	#Z-6195-WS1

**Support:** Wall mounted with supplied concealed hangers and supporting bolts

### NOTES

- Fixture conforms to ANSI/ASME A112.19.2M standard.
- For efficient operation of the urinal, a minimum flowing water pressure of 15 P.S.I. is required at the valve.
- ADA Compliant when mounted at 17" [432] maximum height.



WALL THICKNESS	"A"
0 TO 1 [25]	3 3/4 [95]
1 [25] TO 2 [51]	4 3/4 [121]
2 [51] TO 3 [76]	5 3/4 [146]
ETC.	ETC.

- NOTES: \* VARIABLE-CHECK WITH MANUFACTURER OF FLUSHVALVE FOR PROPER ROUGHING-IN DIMENSION.  
 \*\* ROUGH-IN FOR ANGLE STOP REQUIRED.  
 \*\*\* FIXTURE COMPLIES WITH AMERICANS WITH DISABILITIES ACT WHEN MOUNTED AT RIM HEIGHT OF 17" [432].