



**Low Consumption Wall Hung
Water Closet Bowl**
Vitreous China

FEATURES

• **3449 Placidus™**

Bowl: 3449 Placidus™ (1.6 gpf), vitreous china elongated rim, whirlpool flush, siphon jet, 1½" back spud, wall hung bowl with self-draining jet.

Valve:* Flushvalve with vacuum breaker, 1" angle screwdriver stop and flush connection. Suggested (1.6 gpf) flushvalves are:

Sloan "Royal"	#143-1.5
Delany "Flushboy"	#F534-1.6
Zurn "Aquaflush"	#Z-6143-WS-1

Supply:

Seat:

Color:

Support:

NOTES

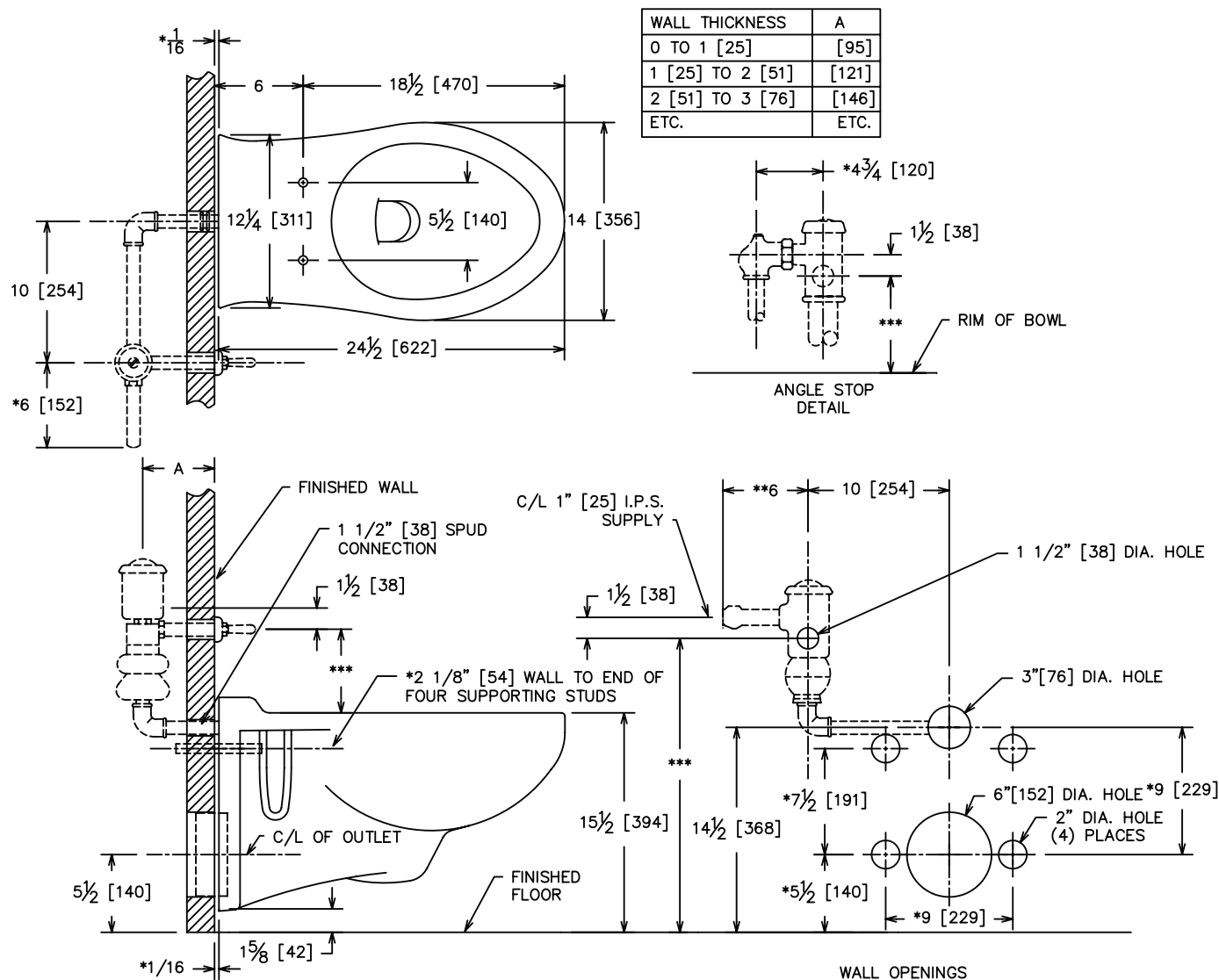
- Fixture conforms to ANSI/ASME A112.19.2M standard.
- **For efficient operation of the bowl, a minimum flowing water pressure of 25 P.S.I. is required at the valve.
- Fixture complies to ADA requirements when mounted at rim height of 17".
- Fully glazed trapway.

WATER ECONOMY FACTS

Average Gallons Per Flush	**25 PSI	50 PSI	80 PSI
3449 Placidus (gpf)	1.40	1.50	1.50
Trapway.....	2"		
Water Surface.....	12" x10"		
Water Seal.....	2 9/16"		

* Not furnished by CR/PL, L.L.C. Description for specification purposes only.





NOTE: ROUGHING-IN DIMENSIONS FOR CLOSET SUPPORT UNIT TO BE OBTAINED DIRECT FROM MANUFACTURER. FOR OUTLET CONNECTION USE NEOPRENE OR RUBBER GASKETS. NOT FOR USE WITH A WAX RING.

- * THESE DIMENSIONS MUST BE MAINTAINED FOR PROPER INSTALLATION.
- ** ROUGH-IN FOR ANGLE STOP WHEN REQUIRED.
- *** VARIABLE - CHECK WITH MANUFACTURER OF FLUSHVALVE FOR PROPER ROUGHING-IN DIMENSION.
- **** FIXTURE COMPLIES WITH AMERICANS WITH DISABILITIES ACT WHEN MOUNTED AT RIM HEIGHT OF 17".

IMPORTANT: Roughing-in dimensions may vary 1/2" and are subject to change or cancellation without prior notice.
No responsibility is assumed for use of superseded or voided leaflets. CR/PL© 12/02 Printed

CR/PL© 12/02 Printed in U.S.A.