

WALL SHELVING SYSTEM

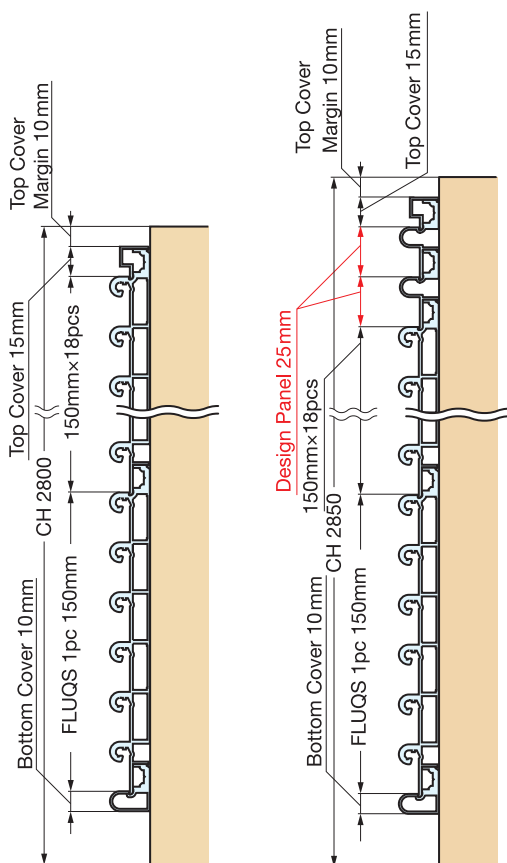
FLUQS® 250/750



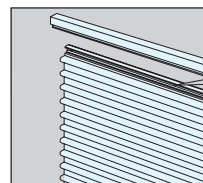
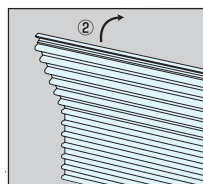
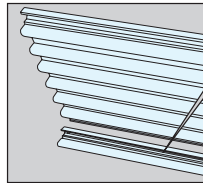
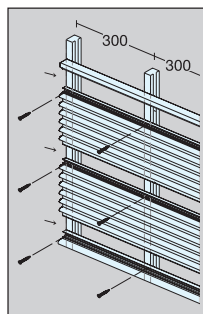
Installation Example

Ceiling Height (CH) : 2800mm

Ceiling Height (CH) : 2850mm



2 design panels are used to cover 50mm space in case of ceiling height 2850mm.

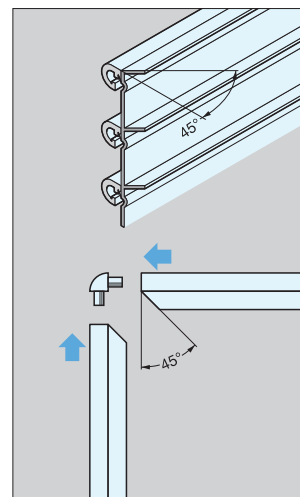


Install the bottom rail ①. Level the bottom rail before fastening. Insert the profile ② into the bottom rail. Fasten with screws.

Install the profile ② until it reaches required height. The profile will cover the screws.

Snap-in the top rail to cover all the screws.

Corner Installation



Corner Example

Part Details

No.	Item No.	Part Name	Dimensions	Material	Finish / Color	Length	Description
①	EX001-21	Main Panel FLUQS 250		Aluminum	Anodized	1820mm (71-21/32")	<ul style="list-style-type: none"> ● Basic Aluminum Wall Panel (Rail pitch 25mm) ● Screw hole pitch 300mm
②	EX004-21	Main Panel FLUQS 750		Aluminum	Anodized		<ul style="list-style-type: none"> ● Basic Aluminum Wall Panel (Rail pitch 75mm) ● Screw hole pitch 300mm
③	EX007-21	Top Cover		Aluminum	Anodized		<ul style="list-style-type: none"> ● Top Cover Track ● Covers the screw heads
④	EX008-21	Bottom Rail		Aluminum	Anodized		<ul style="list-style-type: none"> ● Bottom Track ● Screw hole pitch 300mm
⑤	EX905-21	End Cap (1Way Type)		ABS	Matte Silver	-	-
⑥	EX906-21	End Cap (2Way Type)		ABS	Matte Silver	-	-
⑦	EX701-21	Design Panel 150		Aluminum	Anodized	1820mm (71-21/32")	<ul style="list-style-type: none"> ● Panel with design pattern same as FLUQS 250 (25mm rail pitch type) ● No Slot for Hooks / Shelves ● For space where the design pattern is needed but hooks / shelves are not necessary. ● Screw hole pitch 300mm
⑧	EX709-21	Design Panel 25		Aluminum	Anodized		<ul style="list-style-type: none"> ● Panel to adjust overall height (25mm) ● No Slot for Hooks / Shelves ● Screw hole pitch 300mm
⑨	EX009-21	Connector		Aluminum	Anodized	50mm	<ul style="list-style-type: none"> ● Used to align Panels ● Use 2 pcs per Panel (2 pcs per set)
⑩	EX901-21	Corner Angle		Aluminum	Anodized	3000mm (118-7/64")	<ul style="list-style-type: none"> ● Corner plate to cover the edge of aluminum panel. ● Screws not included

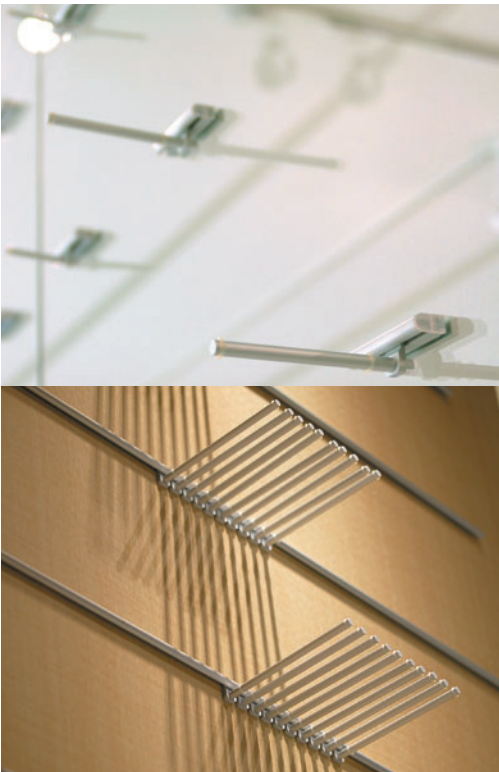
*Please see P.513~514 for accessories.

WALL SHELVING SYSTEM

FLUQS® 25/ONE



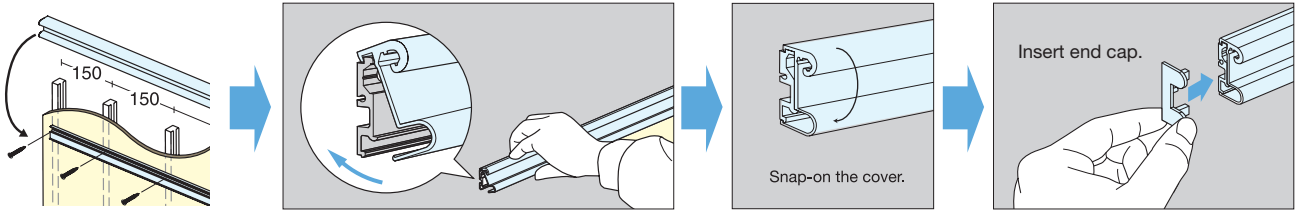
FLUQS 25



FLUQS ONE

FLUQS 25

Installation



FLUQS25 Part Details

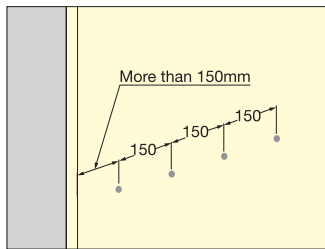
No.	Item No.	Part Name	Dimensions	Material	Finish / Color	Length	Description
①	EX022-21	FLUQS 25		Aluminum	Anodized	1820mm (71-21/32")	<ul style="list-style-type: none">● Single Aluminum Profile.● Easy installation type● End Cap 2 pcs included● Screw hole pitch 150mm
②	EX025-31	End Cap for FLUQS 25		Polypropylene	Grey	-	<ul style="list-style-type: none">● Non-handed (2pcs per set)

Please see P.513~514 for accessories.

FLUQS ONE

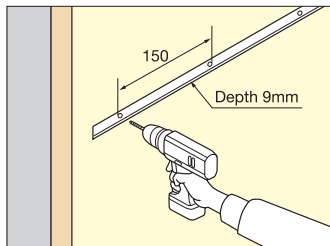
Installation

<Glass/Acrylic, Surface Mount>

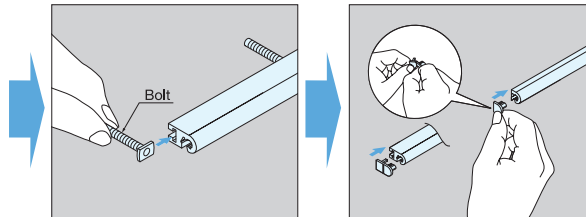


*Minimum Thickness:
Glass / Acrylic 10mm
*Use accessories "For FLUQS ONE Surface Mount". (Please see P.513 for details)
When using other accessories, adaptor (sold separately) is required.

<Wood Panel, Recess Mount>

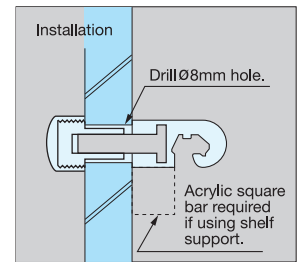


*Minimum Thickness:
Wood 24mm

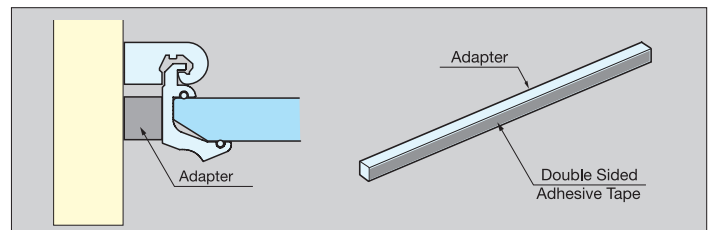
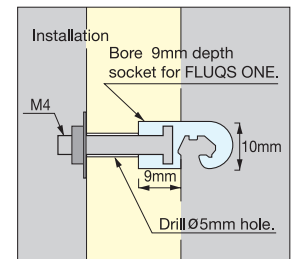


Adapter(Sold separately) is required to attach shelves when FLUQS ONE is installed on a surface. (See p.514)

<Glass/Acrylic>



<Wood Panel>



FLUQS ONE Part Details

No.	Item No.	Part Name	Dimensions	Material	Finish / Color	Length	Description
①	EX012-21	FLUQS ONE		Aluminum	Anodized	50mm (1-31/32")	<ul style="list-style-type: none"> ● Single Aluminum Profile ● Simple and flexible layout design ● End Cap 2 pcs included ● For Recess Mount, cut the End Cap at the cut line and use the shape part. * Access behind the wall/panel is required to install.
	EX010-21					1820mm (71-21/32")	
②	EX018-45	End Cap for FLUQS ONE		Polypropylene	Plain	-	<ul style="list-style-type: none"> ● For Recess Mount, cut the End Cap at the cut line and use the shape part. (2pcs per set)
③	EX019-25	FLUQS ONE Screw Set for Wood		Steel	Chromate	-	<ul style="list-style-type: none"> ● Fastener to attach FLUQS ONE to Wood Panel
④	EX020-20	FLUQS ONE Screw Set for Glass / Acrylic		Steel	Silver	-	<ul style="list-style-type: none"> ● Fastener to attach FLUQS ONE to Glass Panel

Please see P.513~514 for accessories.

ACCESSORIES

Hook Series (For FLUQS 250 / 750 / 25 / ONE Recess Mount)

No.	Item No.	Part Name	Dimensions	Material	Finish / Color	Length	Load Capacity (Kg)
①	EX030-20	Hook (ø3)		Steel	Chrome	15 (19/32")	1 (2.2lbs)
	EX031-20					30 (1-3/16")	
	EX032-20					55 (2-11/64")	
	EX030-07				Matte Silver	15	
	EX031-07					30	
	EX032-07					55	
②	EX035-20	Hook (ø4)		Steel	Chrome	50 (1-31/32")	1 (2.2lbs)
	EX036-20					75 (2-61/64")	
	EX037-20					100 (3-15/16")	
	EX035-07				Matte Silver	50	
	EX036-07					75	
	EX037-07					100	
③	EX040-20	Hook (ø6)		Steel	Chrome	50	2 (4.4lbs)
	EX041-20					100	
	EX042-20					150	
	EX040-07				Matte Silver	50	
	EX041-07					100	
	EX042-07					150	
④	EX046-20	Hook (ø9)		Steel	Chrome	100 (3-15/16")	3 (6.6lbs)
	EX047-20					150 (5-29/32")	
	EX048-20					200 (7-7/8")	
	EX046-07				Matte Silver	100	
	EX047-07					150	
	EX048-07					200	

Hook Series (For FLUQS ONE Surface Mount only)

No.	Item No.	Part Name	Dimensions	Material	Finish / Color	Length	Load Capacity (Kg)
①	EX051-20	Hook (ø3)		Steel	Chrome	15	1 (2.2lbs)
	EX052-20					30	
	EX053-20					55	
②	EX056-20	Hook (ø4)		Steel	Chrome	50	1 (2.2lbs)
	EX057-20					75	
	EX058-20					100	
③	EX061-20	Hook (ø6)		Steel	Chrome	50	2 (4.4lbs)
	EX062-20					100	
	EX063-20					150	
④	EX067-20	Hook (ø9)		Steel	Chrome	100	3 (6.6lbs)
	EX068-20					150	
	EX069-20					200	

Shelf Series

No.	Item No.	Part Name	Dimensions	Material	Finish / Color	W	D	t	Description
①	EX201-41	Acrylic Shelf Set		Aluminum (Bracket)	Anodized (Bracket)	300 (11-13/16")	150 (5-29/32")	10	Max. Weight Load 2.4kg (5.3lbs)
	EX202-41						200 (7-7/8")		
	EX203-41						250 (9-27/32")		
	EX206-41			Acrylic (Shelf)	Light Green (Shelf)	450 (17-23/32")	150		Max. Weight Load 3.6kg (7.9lbs)
	EX207-41						200		
	EX208-41						250		
	EX211-41					600 (23-5/8")	150		Max. Weight Load 4.8kg (10.6lbs)
	EX212-41						200		
	EX213-41						250		
②	EX204-41	Adapter		Acrylic	-	300	-	-	For Shelf Holder when used with FLUQS ONE Surface Mount (with double sided adhesive tape)
	EX209-41					450			
	EX214-41					600			
③	EX026-21	Shelf Holder		Aluminum	Anodized	1820 (71-31/32")	10	9	*For 10mm glass *Maximum shelf depth: 250mm *For permanent installation, apply caulk to bracket and glass/acrylic *2 rubber strips (clear, 1820mm) included *Glass not included, chamfer required as shown
④	EX027-21	Shelf Holder		Aluminum	Anodized	1820 (71-31/32")	-	-	*For 10mm glass *Maximum shelf depth: 450mm *For permanent installation, apply caulk to bracket and glass/acrylic *2 clear rubber strips (1820mm) included *Glass not included, chamfer required as shown
⑤	EX271-21	Shelf Plate		Aluminum	Anodized	300	-	-	Max. Weight Load 5kg (11lbs)
	EX276-21					450			
⑥	EX090-21	Mini Hook		Aluminum	Anodized	10 (25/64")	-	-	Max. Weight Load 3kg (6.6lbs)

FLUQS® 250/750



FLUQS® 25/ONE

