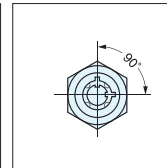
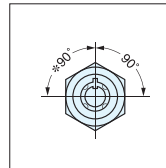
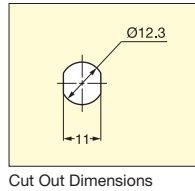
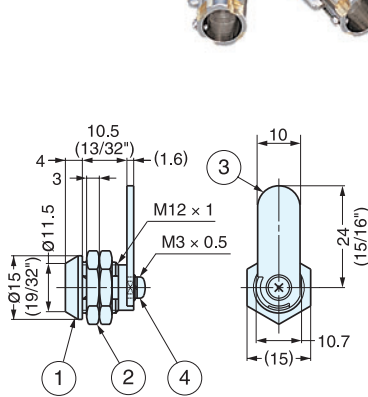


# SHEET METAL MINI CAM LOCK

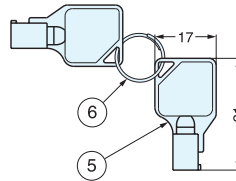
# NAL-S



- Mini zinc alloy cylinder cam lock for sheet metal doors.
- 90 degrees cam rotation.
- Cam is reversible.
- NAL-S-1: Key withdrawals in locked position only. (Key works as a knob in unlocked position.)
- NAL-S-2: Key withdrawals in both locked and unlocked positions.
- Master key type available upon request. (Special order)
- \* Cam should be horizontal when locked, and should be pointing upwards when unlocked.
- \* Not suitable for compression latch situation.
- \* Pressure to cam may cause damage to cylinder.



\* Turn the cam (3) over to use NAL-S as a counterclockwise turn lock.

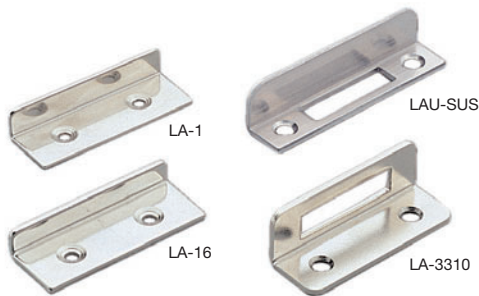


No.	Part Name	Material	Finish
①	Body	Zinc Alloy	Chrome
②	Hex Nut	Steel	Nickel
③	Cam		Zinc
④	Screw	Steel & Brass	Nickel
⑤	Key		
⑥	Key Ring	Steel	

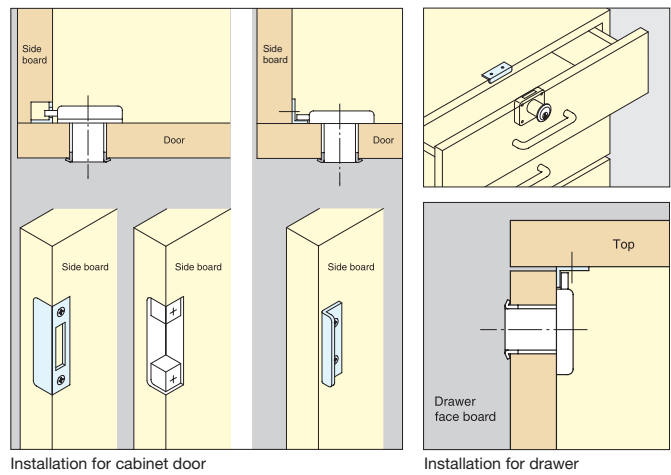
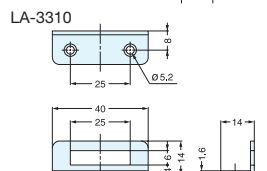
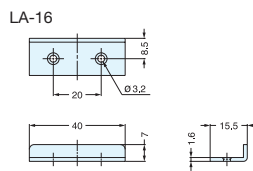
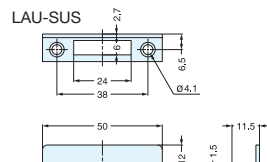
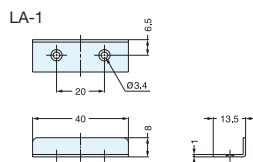
Item No.	Number of Slot (s)	Cylinder Diameter	Key Changes	Keys Included	Weight (g)	Box (pcs)	Carton (pcs)
NAL-S-1	1	12 (15/32") / Width 10.7 (27/64")	100	2	25	100	500
NAL-S-2	2	12 (15/32") / Width 10.7 (27/64")					

# STRIKE

# LA SERIES



- Optional strike plates for application where dead bolt is close to the cabinet edge or inset application.



Item No.	Weight (g)	Box (pcs)	Carton (pcs)	Material	Finish
LA-1	5	400	1600	Steel	Nickel
LA-16	9.6				
LA-3310	10	100	1000	304 Stainless Steel	Satin
LAU-SUS	9.8	250			