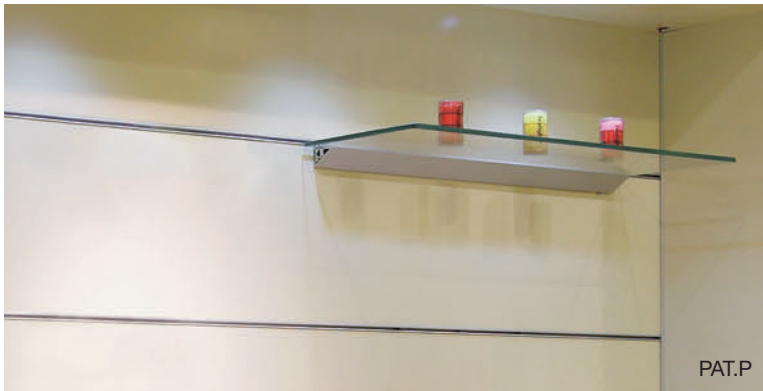


LEVEL ADJUSTABLE SHELVING SYSTEM

VT-DF

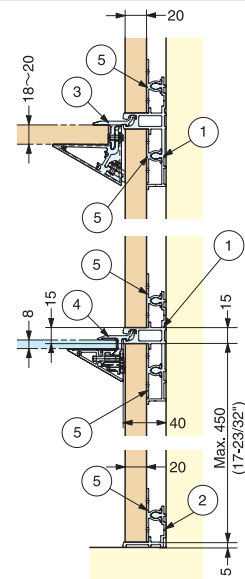
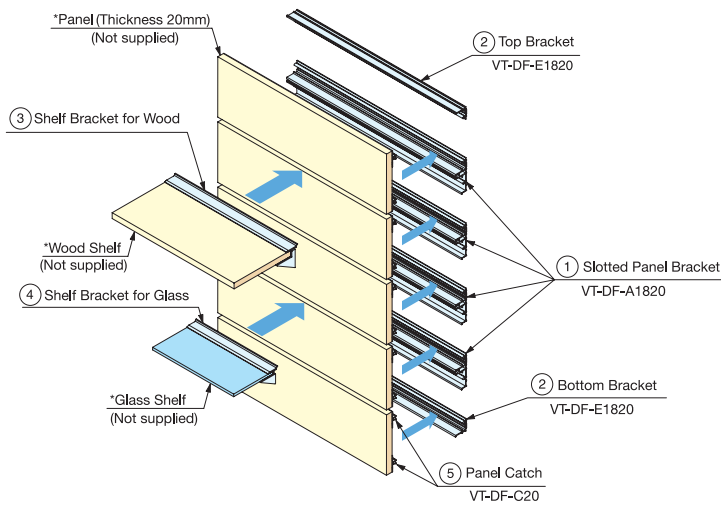
SHELVING SYSTEM

LEVEL ADJUSTABLE SHELVING SYSTEM



PAT.P

- Slotted shelving system for flexible layout.
- Shelves can be installed anywhere in the slot.
- Simple and easy installation.
- Use with desired panel to match the surrounding design.
- Snap-in type catch for easy panel installation.
- Panel Size:
 Thickness - 20mm
 Width - Max. 1820 mm (71-21/32")
 Height - 105~450 mm (4-1/8"~17-23/32")
 * Panel not included.
- Designed to have space behind panels for electric wiring.
- Shelf bracket for wood or glass available. (Shelf board not included.)
 Level adjustable.



| No. | Item No. | Part Name | Dimensions | Material | Finish / Color | Length | Panel Thickness | Load Capacity (kg) |
|-----|-------------|-------------------------|--------------------------------|------------|----------------|--------|-----------------|--------------------|
| ① | VT-DF-A1820 | Slotted Panel Bracket | 8pcs. of catch ⑤ included. | Aluminum | Anodized | 1820mm | 20mm | - |
| ② | VT-DF-E1820 | Top / Bottom Bracket | 8pcs. of catch ⑤ included. | Aluminum | Anodized | 1820mm | 20mm | - |
| ③ | VT-DS-X-450 | Shelf Bracket For Wood | | Aluminum | Anodized Grey | 450mm | 18~20mm | 40kg (88 lbs) |
| | 800mm | | | | | | | |
| ④ | VT-DS-G-450 | Shelf Bracket For Glass | | ABS | Anodized Grey | 450mm | 8mm | 10kg (22 lbs) |
| | VT-DS-G-685 | | | | | 685mm | | |
| ⑤ | VT-DF-C20 | Panel Catch | | Polyacetal | Natural | - | - | - |