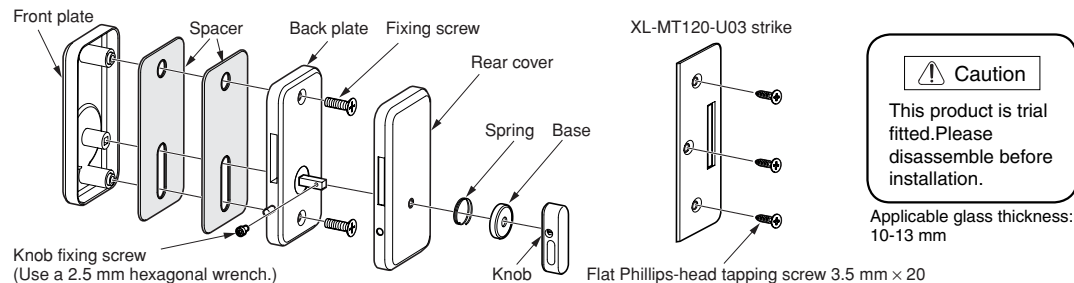


# LAMP<sup>®</sup> LAMP XL-MT120-H01/02 Glass Door Latch with Indicator (Surface Mounting) PAT Installation Instructions

Please read this instruction sheet carefully for proper installation and operation. Incorrect installation and improper use of the product may cause damage to the unit, and also cause injury. This instruction sheet should be kept by the user after installation.

**Parts** Make sure that the correct parts have been provided. The model number is XL-MT120-H02 (left hand use), XL-MT120-H01 (right hand use) is also available. Strike case for this product is also available: XL-MT120-U. When ordering, please specify right hand use (XL-MT120-H01/U01) or left hand use (XL-MT120-H02-/U02)

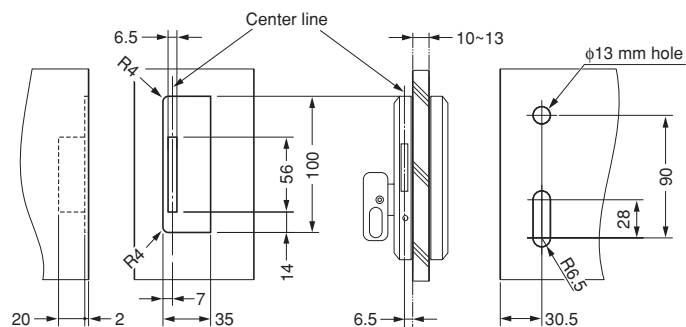


## Cutout Drawing

Referring to the drawing below, make cuts for the glass door latch. Make cutouts for the counter plate after fixing the glass door latch. Make sure the center of the cutout for the counter plate is positioned to the same height with the latch. Make sure that the center lines for the latch and the counter plate are same.

### Counter plate (on frame)

### Latch (sliding door)



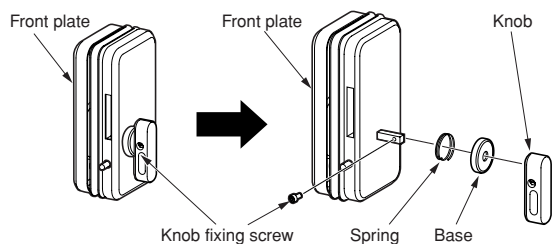
### Caution

Make a cutout for the counter plate after attaching the glass door latch to the door.

## Installation Procedure

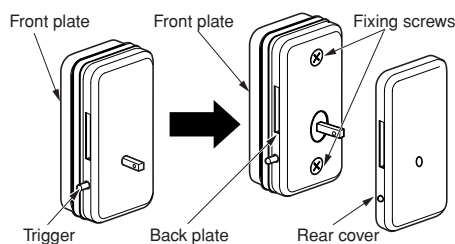
### Step 1. Remove the knob

Using a 2.5 mm hexagonal wrench, unscrew the knob fixing screw, and remove the knob, base, and spring.



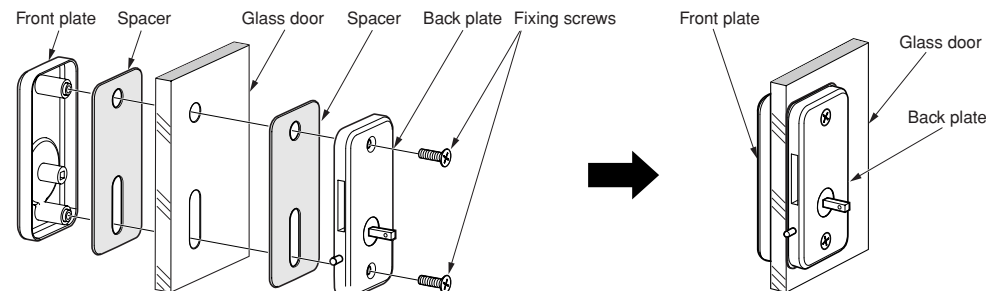
### Step 2. Remove the rear cover

Remove the rear cover with the trigger pushed in, separate the front and back plates from each other by removing the fixing screws.



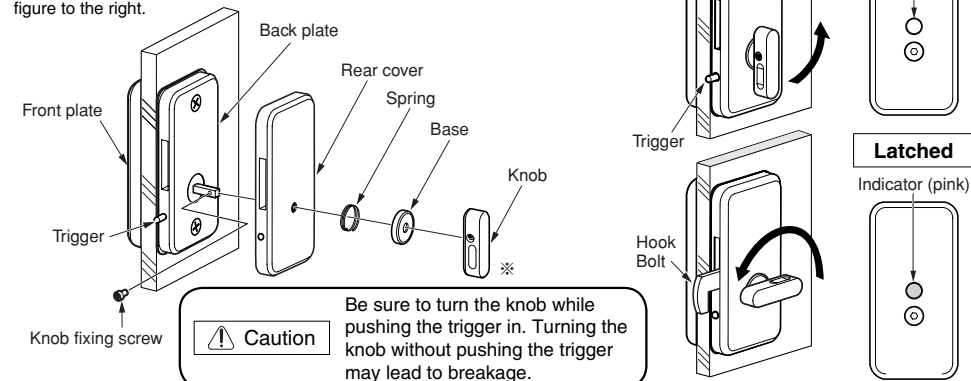
### Step 3. Attach the latch to the door

Sandwich the glass door with the front and back plates. Insert the spacer between each of the front and back plates and the glass door, fix the door latch using the fixing screws from the back plate side.



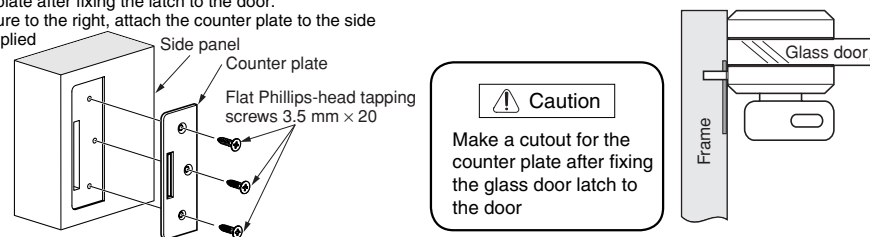
### Step 4. Attach the rear cover

Reverse procedure to remove the rear cover. Attach the rear cover on the back plate with the trigger pushed in. Set the spring, base, and knob in this order. Make sure the knob faces in the direction marked with ※ (with the dent faced downward). Fix the knob with the knob fixing screw. After attaching the door latch, rotate the knob pushing the trigger, and make sure the color of the indicator changes from white to pink as the hook operates as shown in the figure to the right.



### Step 5. Attach the counter plate. (Refer to the cutout drawing.)

Attach the counter plate after fixing the latch to the door. As shown in the figure to the right, attach the counter plate to the side panel using the supplied tapping screws.



For Overseas Customers  
**SUGATSUNE KOGYO CO., LTD.**

1-8-11 Higashikanda, Chiyoda-ku,  
Tokyo 101-8633, Japan  
TEL:+81-3-3866-2260 FAX:+81-3-3866-4447  
http://www.sugatsune.co.jp  
E-mail : export@sugatsune.co.jp

ISO9001(JSAQ384) · ISO14001(JSAE597) CERTIFICATE

For North American Customers  
**SUGATSUNE AMERICA, INC.**

221 East Selandia Lane,  
Carson, CA 90746, U.S.A.  
TEL:+1-310-329-6373 FAX:+1-310-329-0819  
TOLL FREE:(800) 562-5267 (from U.S.A & Canada only)  
http://www.sugatsune.com  
E-mail : sales@sugatsune.com