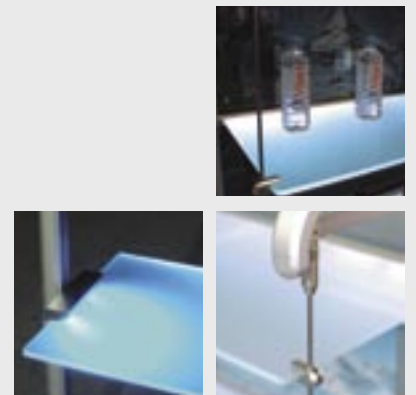
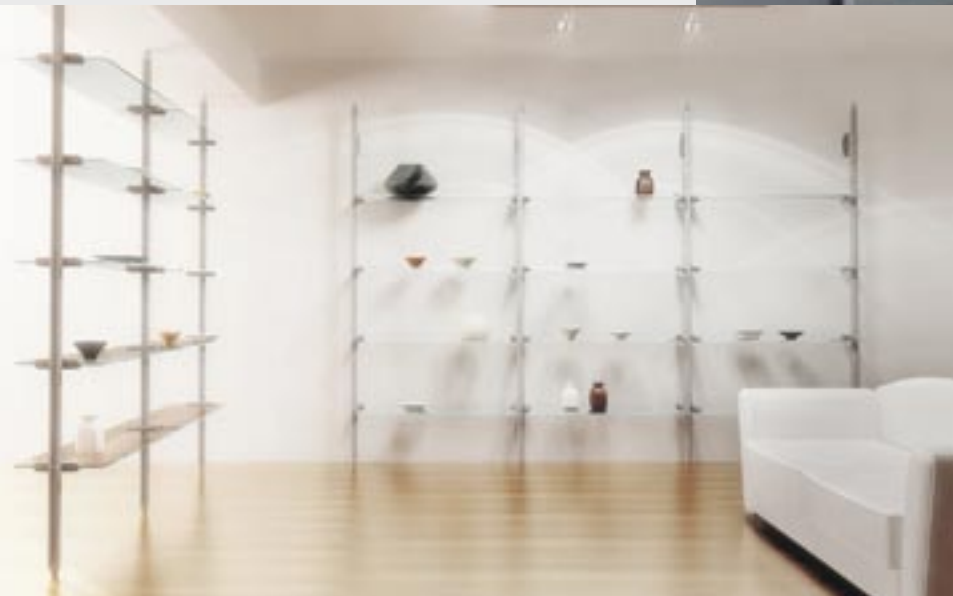




STORE FIXTURE COMPONENTS



XL-US02B PAT.P

UNIT SHELF TYPE "B"

Glass thickness : 8mm -10mm
 Width : Max. 1200mm (Glass thickness 8mm)
 : Max. 1500mm (Glass thickness 10mm)
 Height : Max. 2500mm
 Glass depth : Max. 450mm
 Load Capacity : Max. 30kg (66lbs) / shelf (Glass size 1200x400x10mm)

NEW



Parts Kit (See page 7-8 for details)

- ① MAIN FRAME (1 slot) XL-US02-S006 : 2 each
- ③ TYPE B WIRE KIT XL-US02-S011 : 2 each
- ⑭ TYPE B SHELF SUPPORT XL-US01-F20 : 8 each
- XL-US01-B20 : 8 each

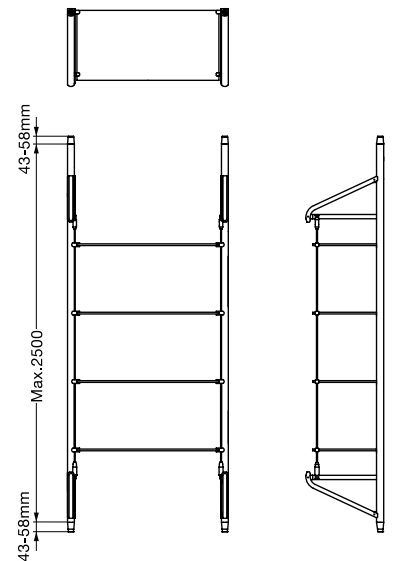
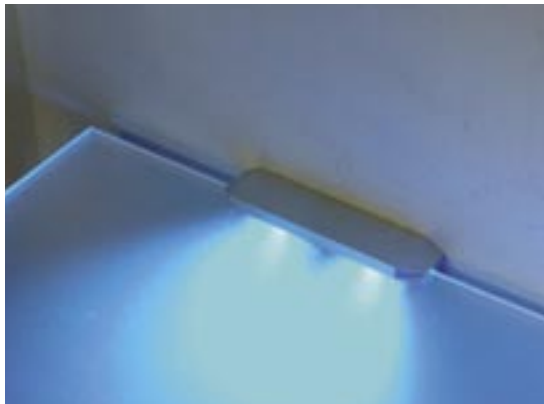
- * Additional parts (page 7-8) available.
- * LED lights are optional.
- * Glass shelves not included.
- * Contact customer service for recommended glass specification.

Optional

Wall Mount, Frame Mount Shelf Clamp

- ⑨ XL-US01-S200
- ⑩ XL-US01-S200L (with LED)

- * LED light will make the display effective.
- * LED Color: Blue, Cyan

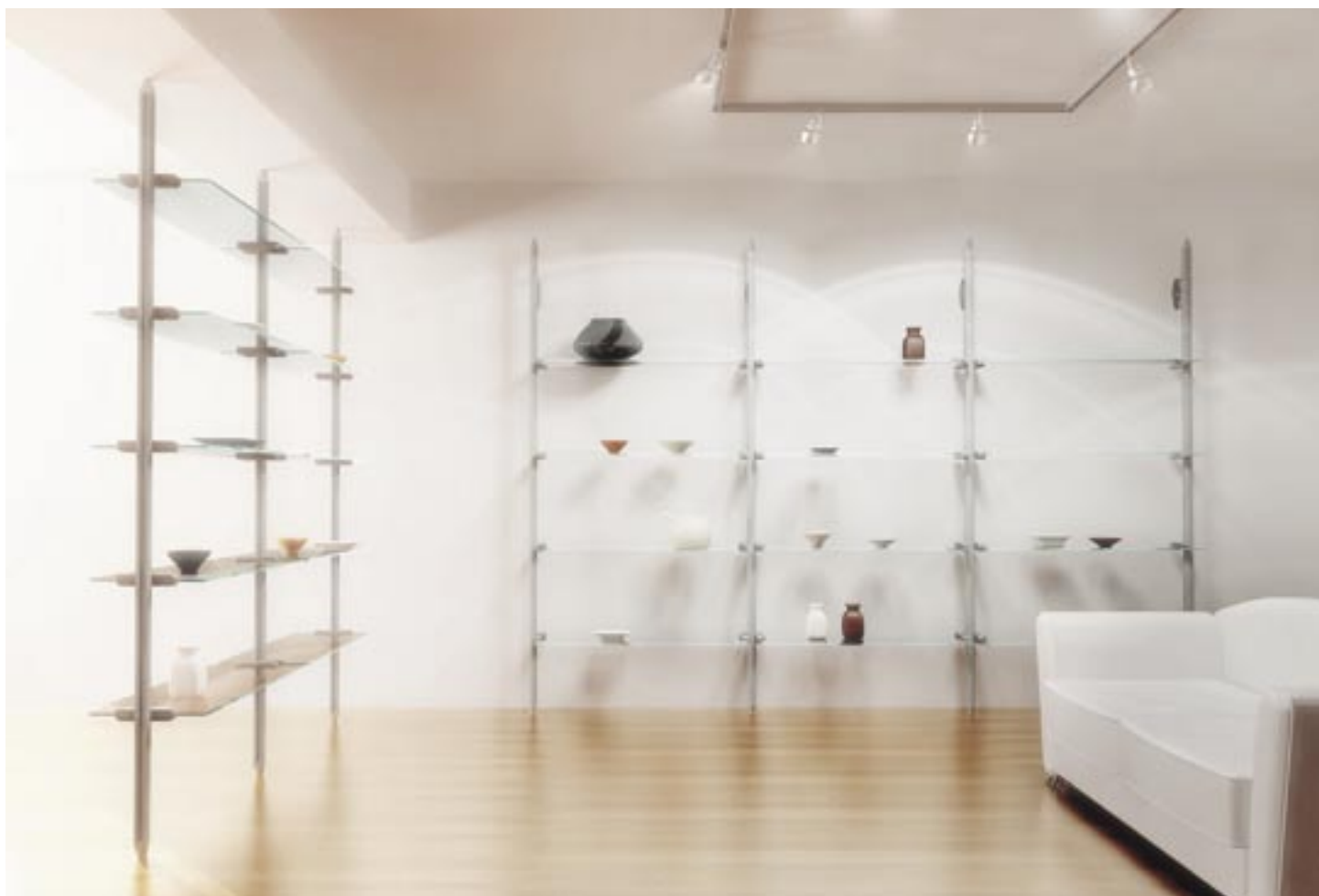


XL-US02C PAT.P

UNIT SHELF TYPE "C"

Glass thickness : 8mm - 10mm
 Width : Max. 1200mm (Glass thickness 8mm)
 : Max. 1500mm (Glass thickness 10mm)
 Height : Max. 2500mm
 Glass Depth : Max. 450mm
 Load Capacity : Max. 35kg (77lbs) / shelf (Glass size 1200×400×10mm)

NEW



Parts Kit (See page 7-8 for details)

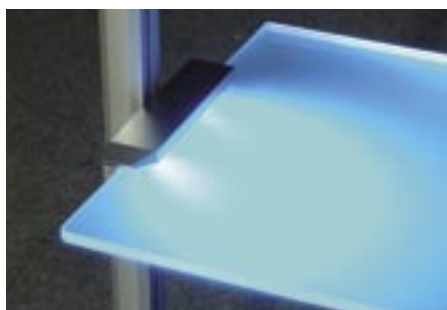
- ② MAIN FRAME (2 slot) XL-US02-S007: 2 each
 ⑨ GLASS SHELF CLAMP XL-US01-S200: 8 each

- * Additional parts (page 7-8) available.
- * Additional glass shelf clamp XL-US01-S200 available.
- * Glass shelves not included.
- * Contact customer service for recommended glass specification.

Optional

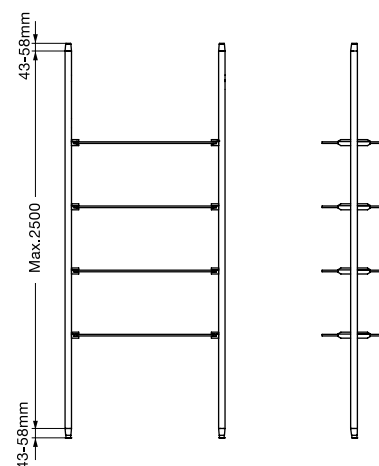
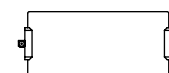
⑩ Glass Shelf Clamp (with LED) XL-US01-S200L

LED provides alternative lighting for shelf space.
 LED Color: Blue, Cyan



Optional

⑤ Wall Mounting Bracket XL-US02-S008



UNIT SHELF APPLICATION EXAMPLE

Utilized as a sign panel.

The flexibility allows for variety of configurations.



UNIT SHELF TYPE "B"

XL-US02B can be configured as a partition for shop and office spaces.



UNIT SHELF TYPE "C"

XL-US02C used as an entertainment center.

The shelving offers alternative lighting to space creating a sense of comfort to a room.



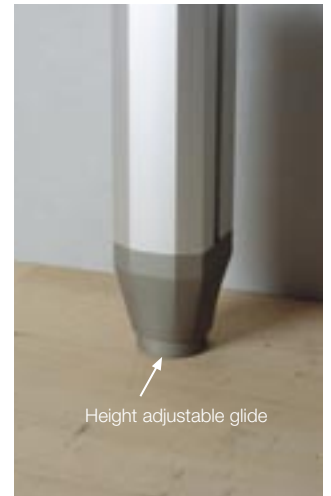
The flexibility and the contemporary appearance will add a unique visual taste to merchandise and exhibits.



Shelf edge (optional) will prevent items from falling off. Various optional parts available to satisfy the needs.



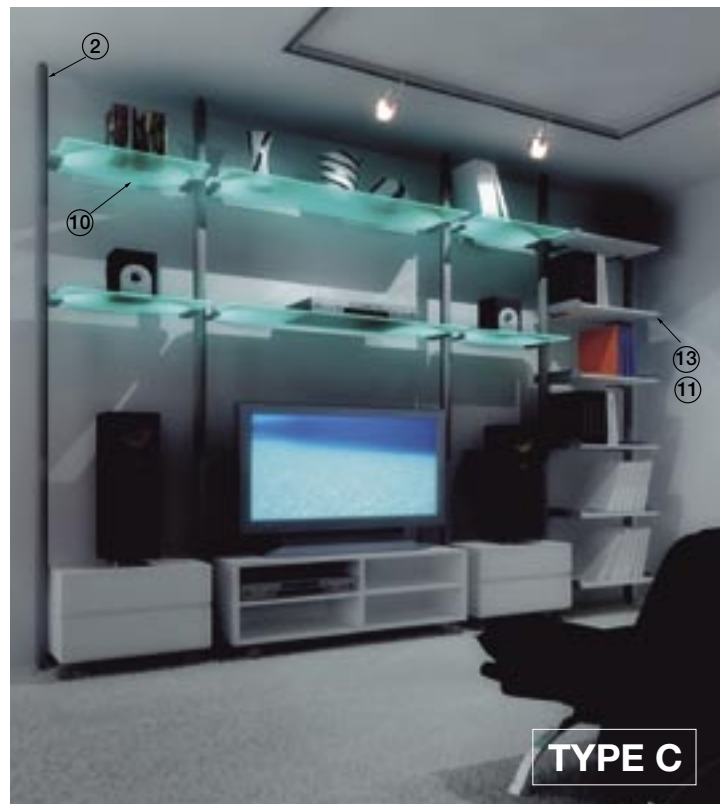
Height adjustable feature offers easy installation.



PARTS FOR UNIT SHELF



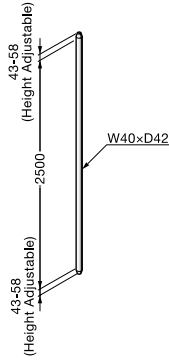
TYPE B



TYPE C

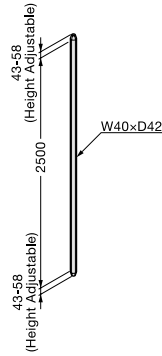
**① MAIN FRAME (1 Slot Type)
XL-US02-S006**

Material / Finish : Aluminum, Zinc Alloy / Alumite, Gray
Max. Height 2600mm (Floor to Ceiling)



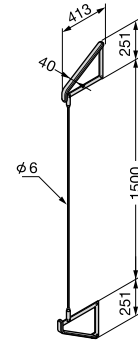
**② MAIN FRAME (2 Slot Type)
XL-US02-S007**

Material / Finish : Aluminum, Zinc Alloy / Alumite, Gray
Max. Height 2600mm (Floor to Ceiling)



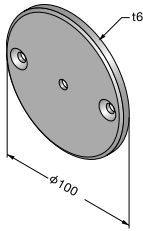
**③ TYPE B WIRE KIT
XL-US02-S011**

Material / Finish : Aluminum, Steel / Matte Chrome
For Main Frame 2100mm - 2500mm
To be used with TYPE B SHELF SUPPORT.



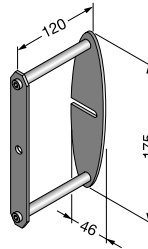
**④ WALL MOUNTING PLATE (For TYPE B)
XL-US02-S010**

Material / Finish : Steel / Matte Chrome
To be used with main frame(1 slot type).



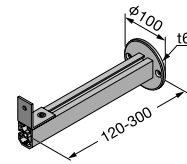
**⑤ WALL MOUNTING BRACKET
XL-US02-S008**

Material / Finish : 304 Stainless Steel, Steel / Gray



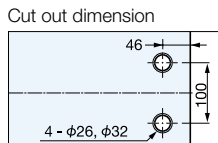
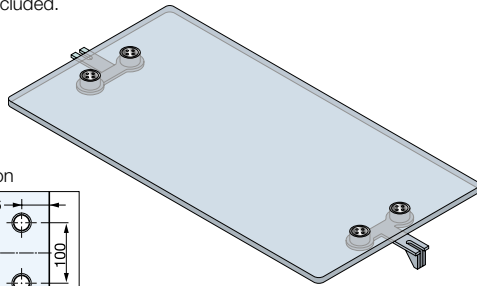
**⑥ WALL MOUNTING BRACKET
XL-US02-S009**

Material / Finish: Aluminum, Steel / Alumite, Matte Chrome



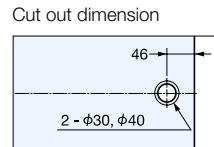
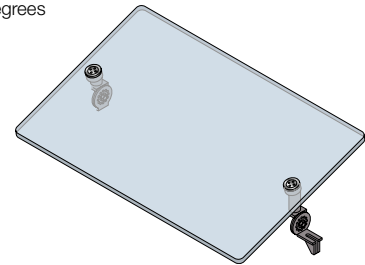
**⑦ SHELF SUPPORT (For GLASS SHELF)
XL-US02-S001**

Material / Finish : 304 Stainless Steel / Polished, Plain
For TYPE C
* Glass not included.



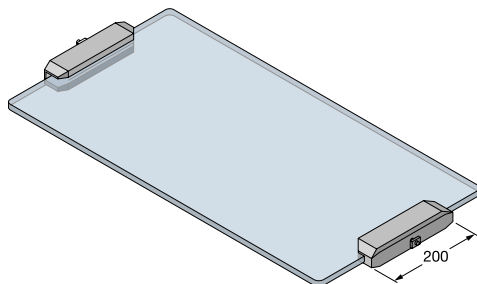
**⑧ SHELF SUPPORT FOR GLASS
(ANGLE ADJUSTABLE)
XL-US02-S003**

Material / Finish : 304 Stainless Steel / Polished, Plain
For TYPE C
Angle adjustable each 30° degrees
* Glass not included.



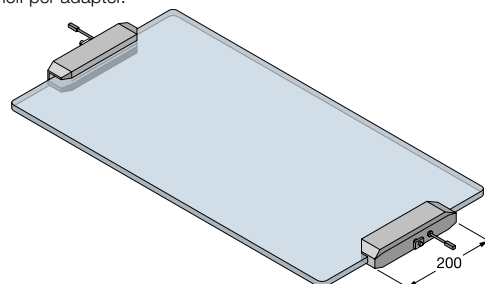
**⑨ SHELF CLAMP (For GLASS SHELF)
XL-US01-S200**

Material / Finish : Zinc Alloy, Rubber / Matte Chrome, Black
For TYPE C
* Glass not included.



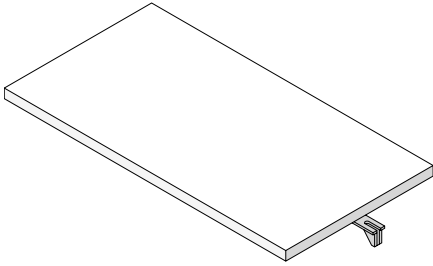
**⑩ SHELF CLAMP (With LED, For GLASS SHELF)
XL-US01-S200L**

Material / Finish : Zinc Alloy, Rubber / Matte Chrome, Black
For TYPE C
LED Color : Blue, Cyan
* Glass not included.
* Power adapter not included.
* Recommended power adapter : Output: DC 9V 0.8A / Plug: 2.1x5.5mm (+)
* 1 shelf per adapter.



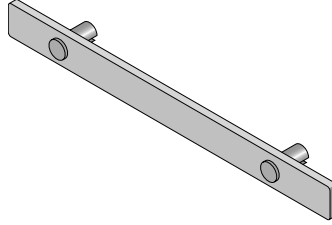
⑪ SHELF SUPPORT (For WOOD SHELF) XL-US02-S002

Material / Finish : 304 Stainless Steel / Plain
For TYPE C
* Shelf not included.



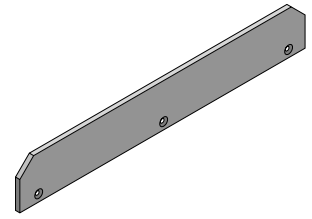
⑫ SHELF EDGE (For GLASS SHELF) XL-US02-S015

Material / Finish : Aluminum, Zinc Alloy /
Alumite, Chrome
W400 x H50 x t5
For angle adjustable glass shelf
Attach at the front of glass shelf to prevent items
from falling off.



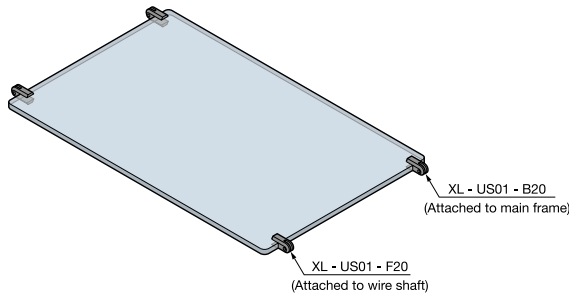
⑬ SHELF EDGE (For WOOD SHELF) XL-US02-S014

Material / Finish : Aluminum / Alumite
W400 x H50 x t5
Attach at the side of the wood shelf.



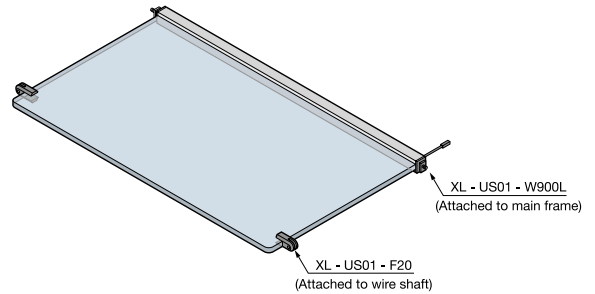
⑭ TYPE B SHELF SUPPORT XL-US01-F20 (For SHAFT) XL-US01-B20 (For MAIN FRAME)

Material / Finish : Zinc Alloy / Matte Chrome
For Type B
* Glass not included.



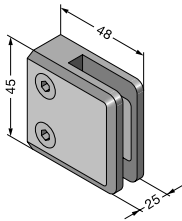
⑮ TYPE B SHELF SUPPORT FOR GLASS SHELF (WITH LED) XL-US01-F20 (For SHAFT) XL-US01-W900L (For MAIN FRAME)

Material / Finish : Zinc Alloy, Aluminum / Matte Chrome, Alumite
Width : 900mm
LED Color : Blue, White
* Glass not included.
* Power adapter not included.
* Recommended power adapter : Output: DC 24V 1A / Plug: 2.5x5.5mm (+)
* 2 shelves per adapter.



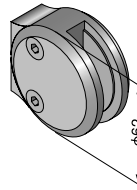
⑯ CENTER PANEL CLAMP 9344VA2

Material / Finish : 316 Stainless Steel / Satin
Glass thickness : 8mm-10mm
Holds panel between main frames.



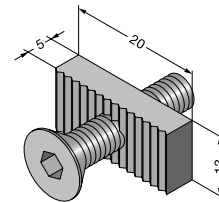
⑰ CENTER PANEL CLAMP 4856ZN1, 4856ZN5

Material / Finish : Zinc Alloy / Matte Chrome (ZN1)
Zinc Alloy / Chrome (ZN5)
Glass thickness : 10mm
Holds panel between main frames.



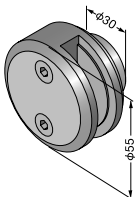
⑱ CENTER PANEL CLAMP FASTENER XL-US02-S012

Material / Finish : 304 Stainless Steel / Plain
To be used to fasten center panel clamp and main frame.



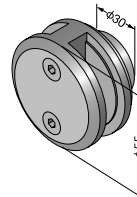
⑲ BACK PANEL CLAMP 4860ZN1, 4860ZN5

Material / Finish : Zinc Alloy / Matte Chrome (ZN1)
Zinc Alloy / Chrome (ZN5)
Glass thickness : 8mm-12mm
Hold panel between main frames.



⑳ BACK PANEL CLAMP 4866ZN1, 4866ZN5

Material / Finish : Zinc Alloy / Matte Chrome (ZN1)
Zinc Alloy / Chrome (ZN5)
Glass thickness : 8mm-12mm
Hold panel between main frames (2 slot type).



㉑ BACK PANEL CLAMP FASTENER XL-US02-S013

Material / Finish : 304 Stainless Steel / Plain
To be used to fasten back panel clamp and main frame.

