

LIGHT COVES

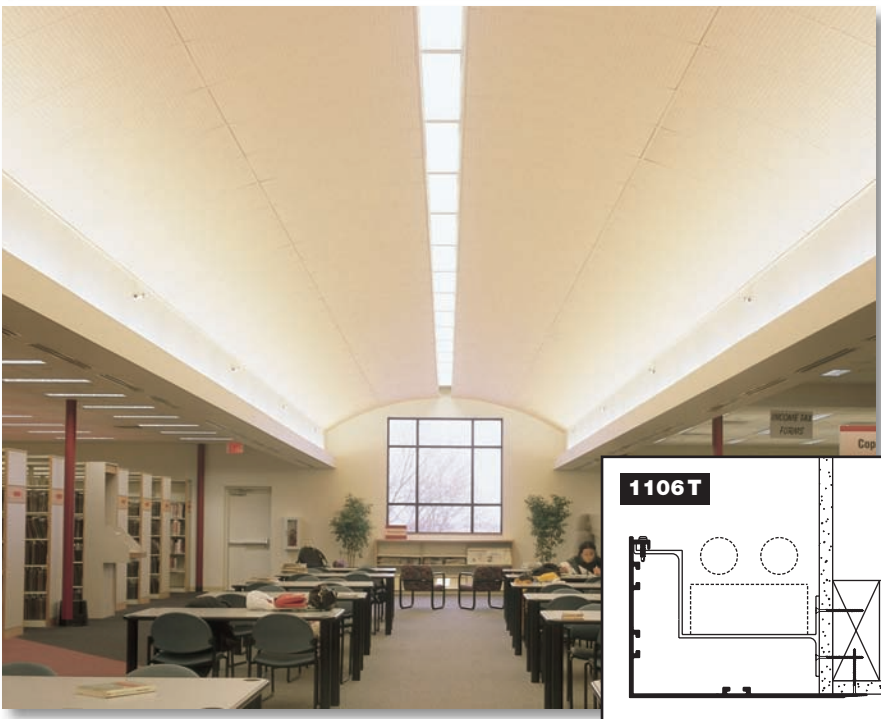
GORDON

INTERIOR SPECIALTIES DIVISION

LIGHT COVES

Surprisingly affordable, extruded aluminum Gordon light covers provide a crisp look and generally install for less than traditional drywall or glass-fiber reinforced gypsum shapes. Because of the economies, light covers have been used in many institutions where the elegance of indirect lighting is desired without affecting the budget. Field labor savings help eliminate the traditional steps such as installing corner beads, taping, floating, sanding and painting. You have the option of finishing light covers in the field or choosing a factory finish. Most of our standard profiles can be curved to a minimum radius of 12' 0". Contact Gordon for more details.

Create a continuous cove or just a small sconce...the design options are yours. Manufactured in high quality extruded aluminum, light covers combine unmatched durability and ease of installation with maximum design flexibility. Whether you want to create subtle accents or dramatic lighting in commercial or residential environments, you can be assured of Gordon quality and attention to detail.



CORNERS/END CAPS

Inside and outside corners are factory mitered and welded for clean lines and the elimination of labor intensive field work. Straight lengths are spliced to corners, joints are filled with caulk or filler materials and the entire system can be painted right along with the wall or factory finished in a color of your choice. End caps that exactly match the profile of the light cove are factory fabricated and are field or factory applied.



LIGHTING

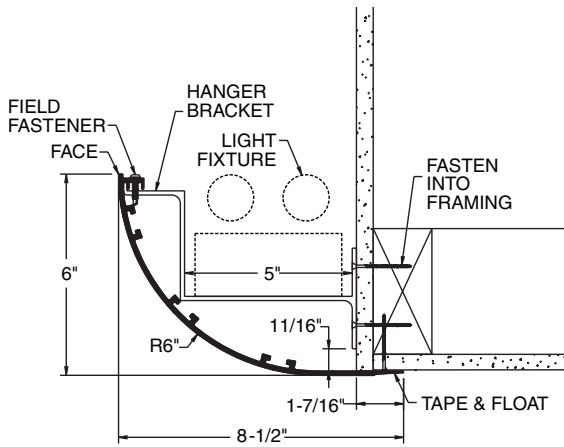
Choose from a variety of light sources. Standard florescent, high-output, cold tube cathode and neon are compatible with light coves, whether continuous or interrupted.

Light sources can also be metal halide, high pressure sodium high intensity discharge light fixtures or halogen incandescent.

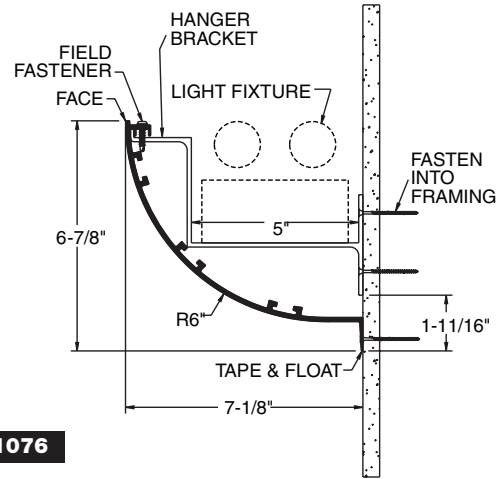
The cost efficiencies of Gordon light coves results from the use of economical strip fixtures mounted directly to the light cove hanger bracket.



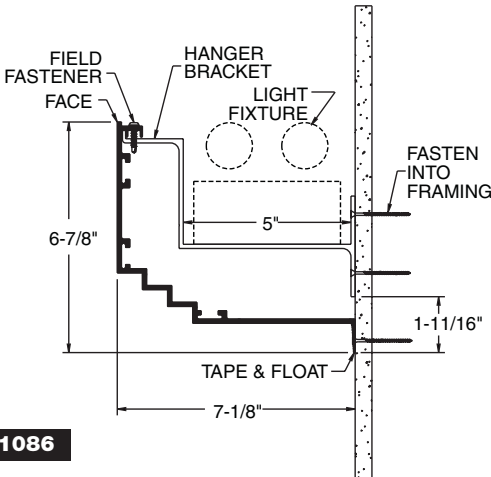
LIGHT COVES



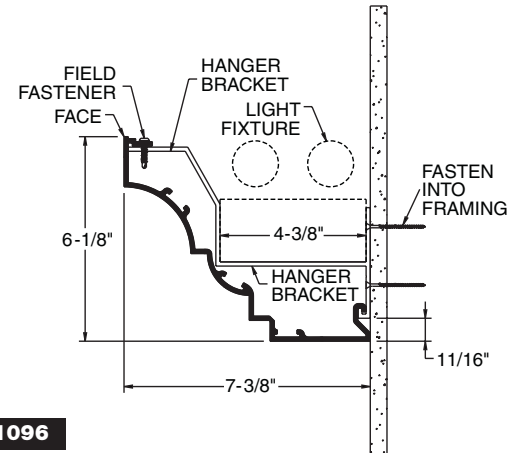
1066



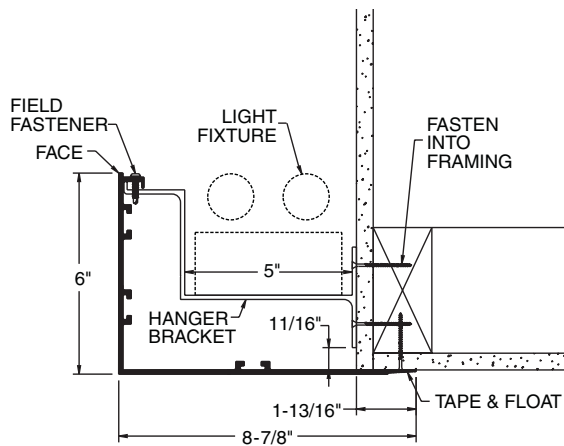
1076



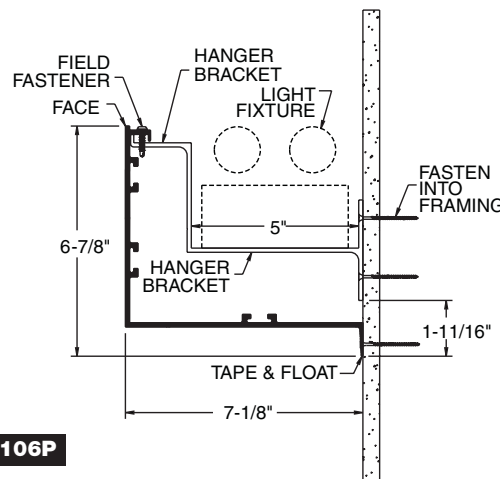
1086



1096

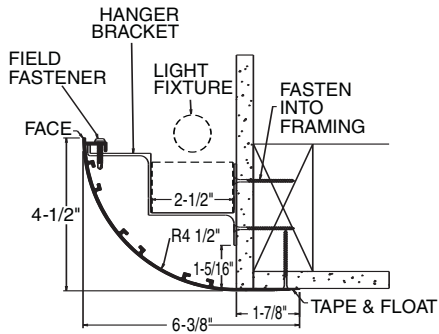


1106T

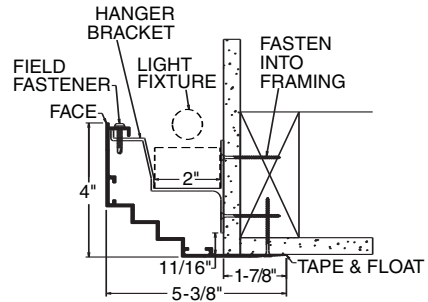


1106P

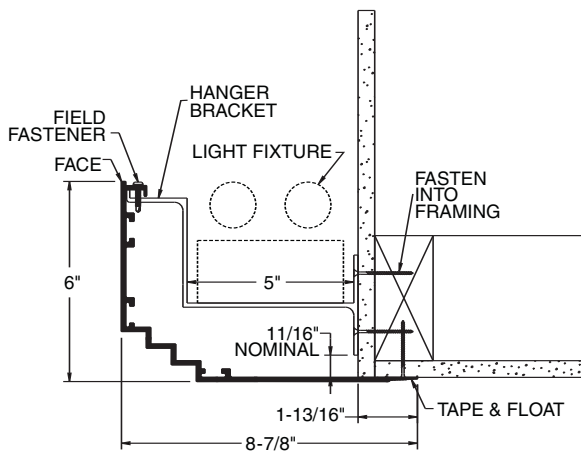
LIGHT COVES



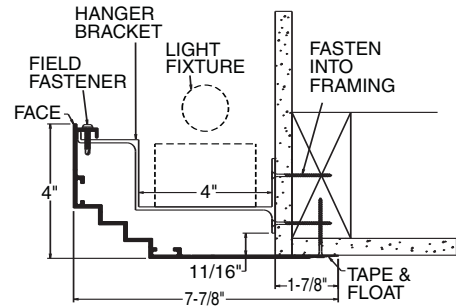
1066R



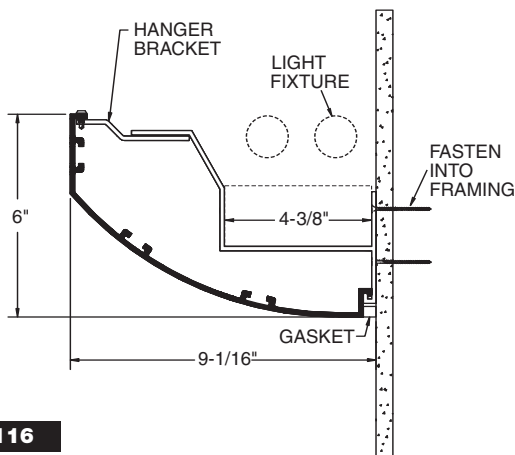
1086STR



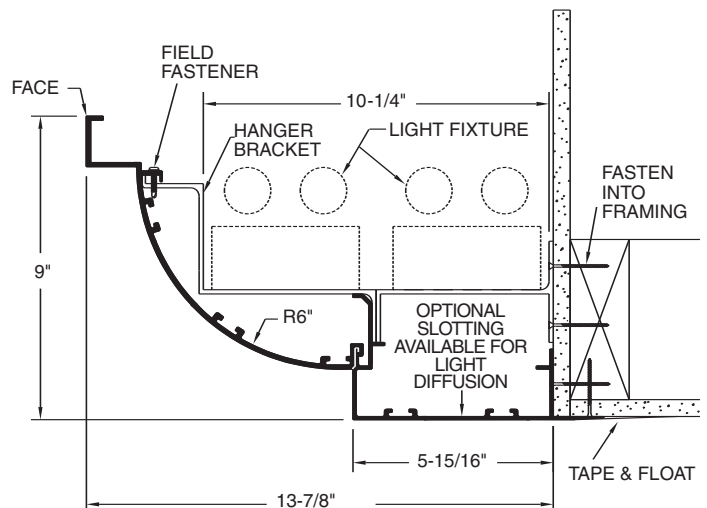
1086T



1086TR



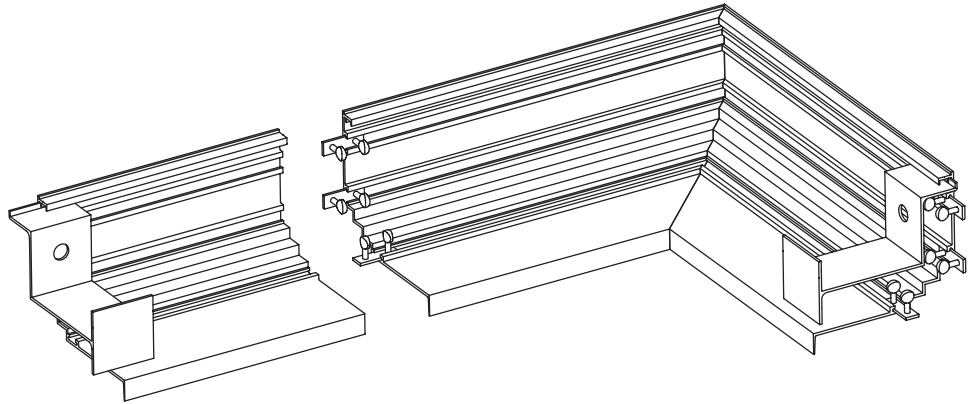
1116



1206T

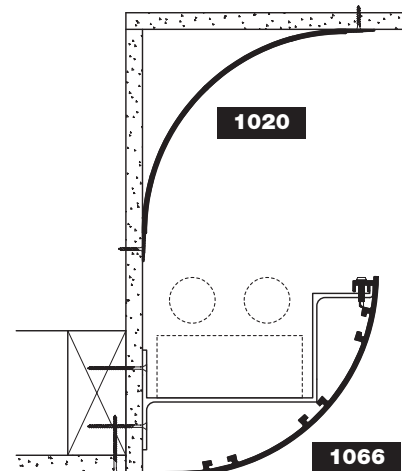
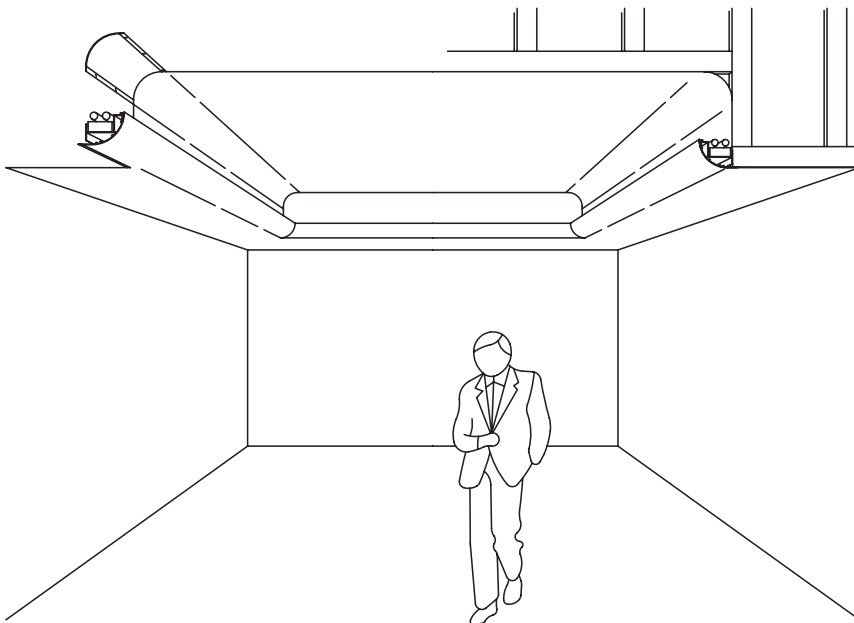
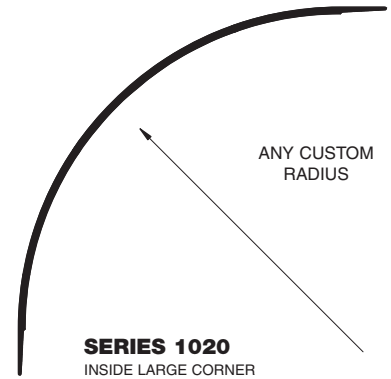
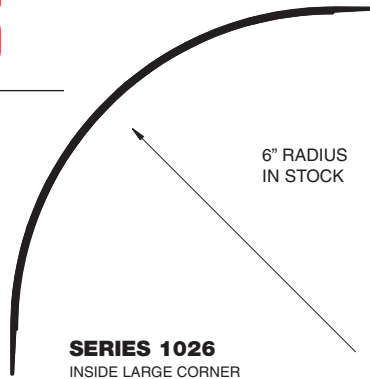
HANGER/SPLICE

Positive locking splices with easy to use thumb screws insure virtually invisible joints and a strong assembly. The light cove hanger bracket doubles as an integral shelf for a standard strip fixtures. Hangers are always provided with light covers and are installed 4' O.C. and wherever joints occur.



LIGHT REFLECTORS

Light reflectors, in combination with light coves, create unique indirect lighting. By incorporating light cove with a variety of light reflectors, you can create the exact lighting effect desired plus improve the efficiency of your lighting.



The standard finish for Gordon light covers and light reflectors is alodine precoat, which allows for the painting right along with the drywall.

A variety of factory finishes are available including powder coat and acrylic "wet" paint. These finishes encompass a large spectrum of colors that meets most designer's vision.

What's your vision?... We're ready to help.





Gordon, Inc. is represented by independent sales representatives throughout the world. We stand ready to assist you in design, pricing and coordination. Contact our headquarters for the name of your representative.

Detailed light cove specifications described in this brochure are available in AIA Masterspec® format. Contact our headquarters or website, gordonceilings.com.

GORDON

INTERIOR SPECIALTIES DIVISION

5023 Hazel Jones Road
Bossier City, Louisiana 71111
Tel: 800.747.8954
Tel: 318.747.8954
Fax: 800.877.8746
gordonceilings.com
sales@gordonceilings.com