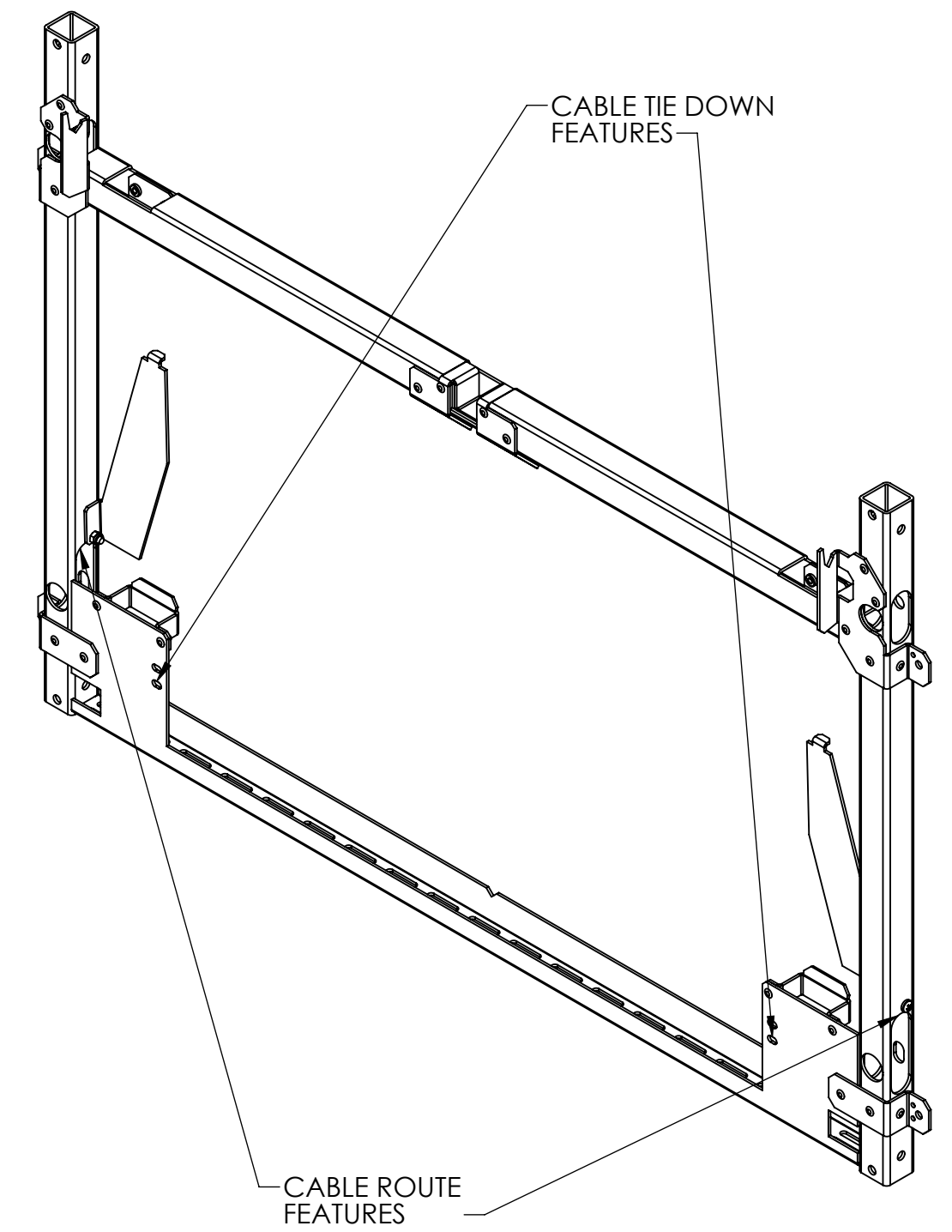




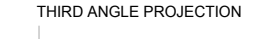
REVISION HISTORY				
ECO	ZONE	REV.	DESCRIPTION	DATE
				APPR'D

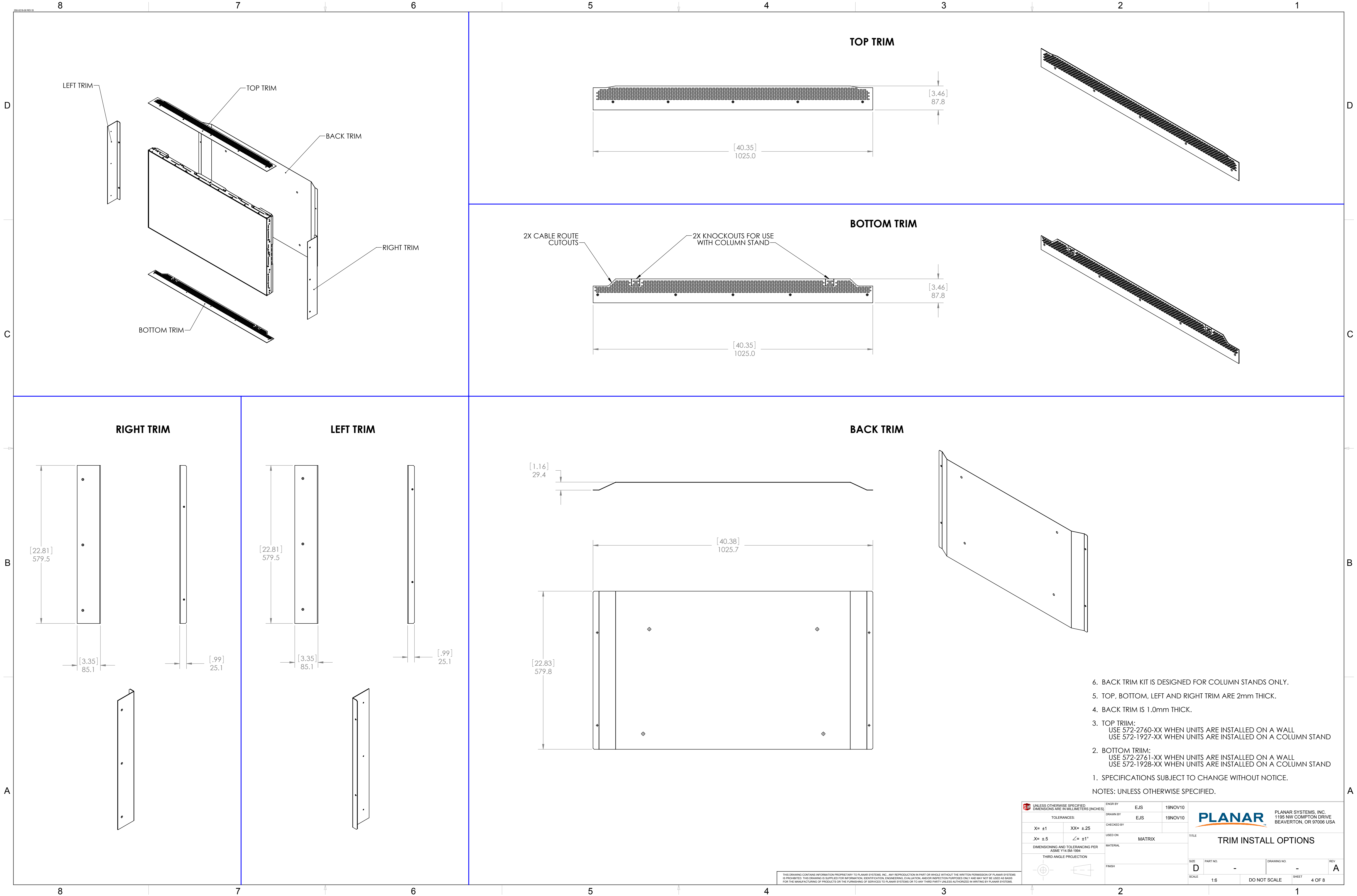
1. SPECIFICATIONS SUBJECT TO CHANGE WITHOUT NOTICE.
NOTES: UNLESS OTHERWISE SPECIFIED.

UNLESS OTHERWISE SPECIFIED: DIMENSIONS ARE IN MILLIMETERS (INCHES)		ENGR BY EJS	19NOV10	PLANAR PLANAR SYSTEMS, INC. 1195 NW COMPTON DRIVE BEAVERTON, OR 97006 USA	
TOLERANCES:		DRAWN BY EJS	19NOV10		
X= ±1	XX= ±.25	CHECKED BY		TITLE ADA MATRIX PRODUCT OUTLINE	
.X= ±.5	∠= ±1°	USED ON	MATRIX		
DIMENSIONING AND TOLERANCING PER ASME Y14.5M-1994		MATERIAL		SIZE D	PART NO. -
THIRD ANGLE PROJECTION		FINISH		DRAWING NO. -	REV A
SCALE 1:5		DO NOT SCALE		SHEET 1 OF 8	

THIS DRAWING CONTAINS INFORMATION PROPRIETARY TO PLANAR SYSTEMS, INC. ANY REPRODUCTION IN PART OR WHOLE WITHOUT THE WRITTEN PERMISSION OF PLANAR SYSTEMS IS PROHIBITED. THIS DRAWING IS SUPPLIED FOR INFORMATION, IDENTIFICATION, ENGINEERING, EVALUATION, AND/OR INSPECTION PURPOSES ONLY AND MAY NOT BE USED AS BASIS FOR THE MANUFACTURING OF PRODUCTS OR THE FURNISHING OF SERVICES TO PLANAR SYSTEMS OR TO ANY THIRD PARTY UNLESS AUTHORIZED IN WRITING BY PLANAR SYSTEMS.



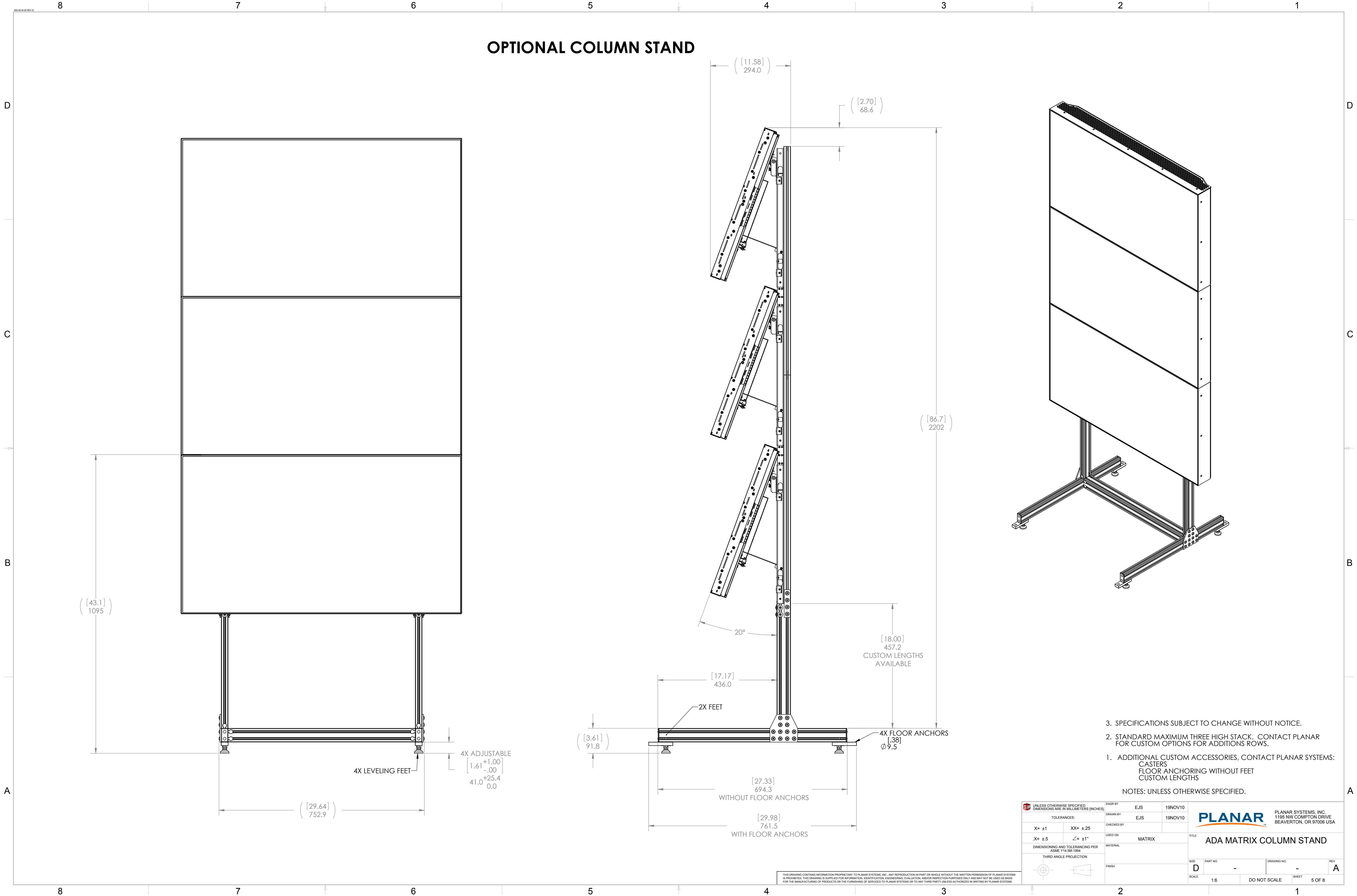
<div></div> <div>UNLESS OTHERWISE SPECIFIED DIMENSIONS ARE IN MILLIMETERS [INCHES]</div>	ENGR BY		EJS	22SEP10	<div></div> <div>PLANAR SYSTEMS, INC. 1195 NW COMPTON DRIVE BEAVERTON, OR 97006 USA</div>	
	TOLERANCES:		DRAWN BY	EJS		22SEP10
	X= ±1		XX= ±25	CHECKED BY		
	X= ±5		∠= ±1°	USED ON		
DIMENSIONING AND TOLERANCING PER ASME Y14.5M-1994		MATERIAL		TITLE		
THIRD ANGLE PROJECTION		FINISH		STANDARD ADA MATRIX MOUNT BRACKET LAYOUT		
				SIZE D SCALE	PART NO. - 1:5	
				DRAWING NO. - DO NOT SCALE	REV A SHEET 2 OF 8	



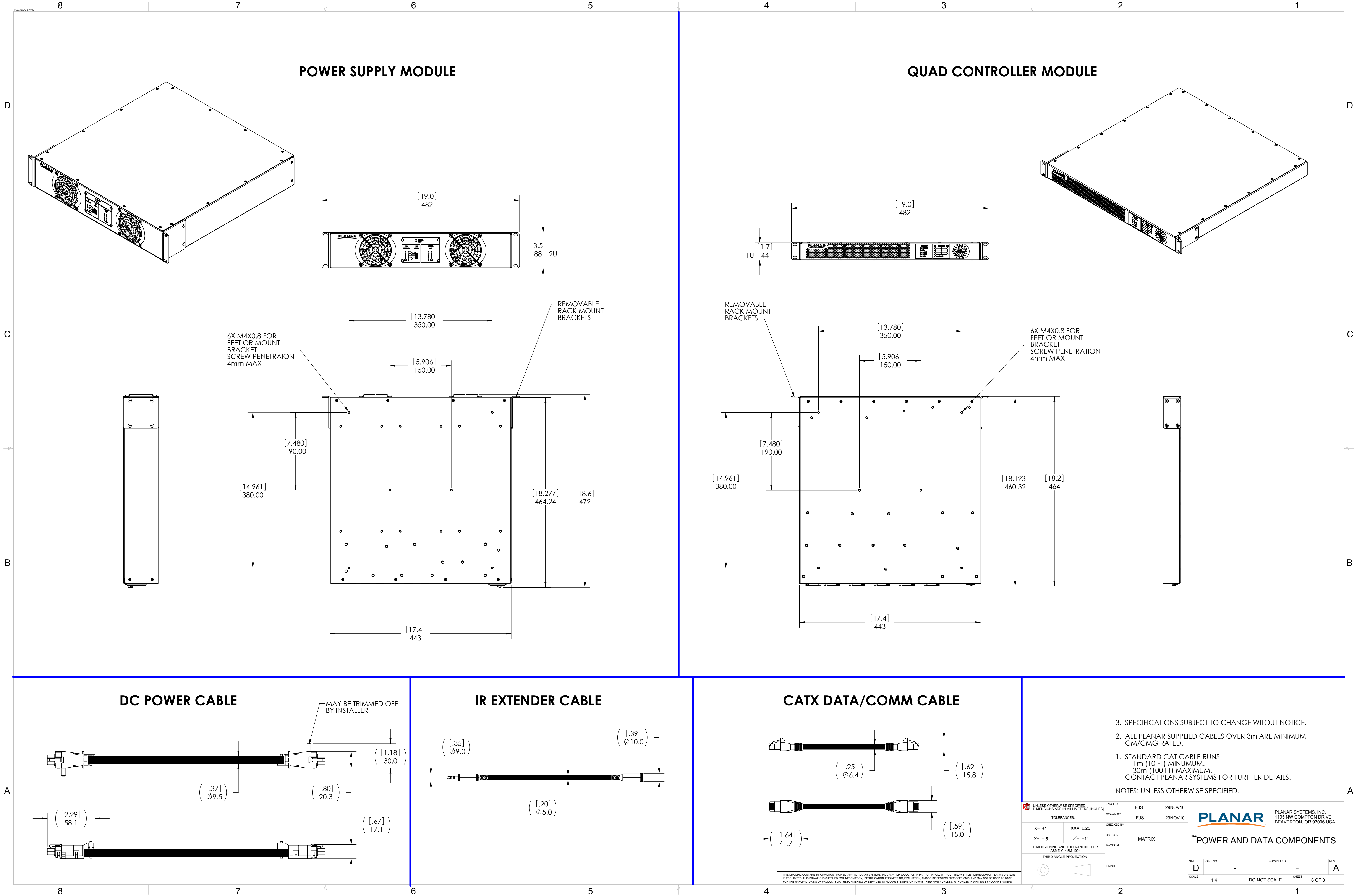
6. BACK TRIM KIT IS DESIGNED FOR COLUMN STANDS ONLY.
5. TOP, BOTTOM, LEFT AND RIGHT TRIM ARE 2mm THICK.
4. BACK TRIM IS 1.0mm THICK.
3. TOP TRIM:
USE 572-2760-XX WHEN UNITS ARE INSTALLED ON A WALL
USE 572-1927-XX WHEN UNITS ARE INSTALLED ON A COLUMN STAND
2. BOTTOM TRIM:
USE 572-2761-XX WHEN UNITS ARE INSTALLED ON A WALL
USE 572-1928-XX WHEN UNITS ARE INSTALLED ON A COLUMN STAND
1. SPECIFICATIONS SUBJECT TO CHANGE WITHOUT NOTICE.
- NOTES: UNLESS OTHERWISE SPECIFIED.

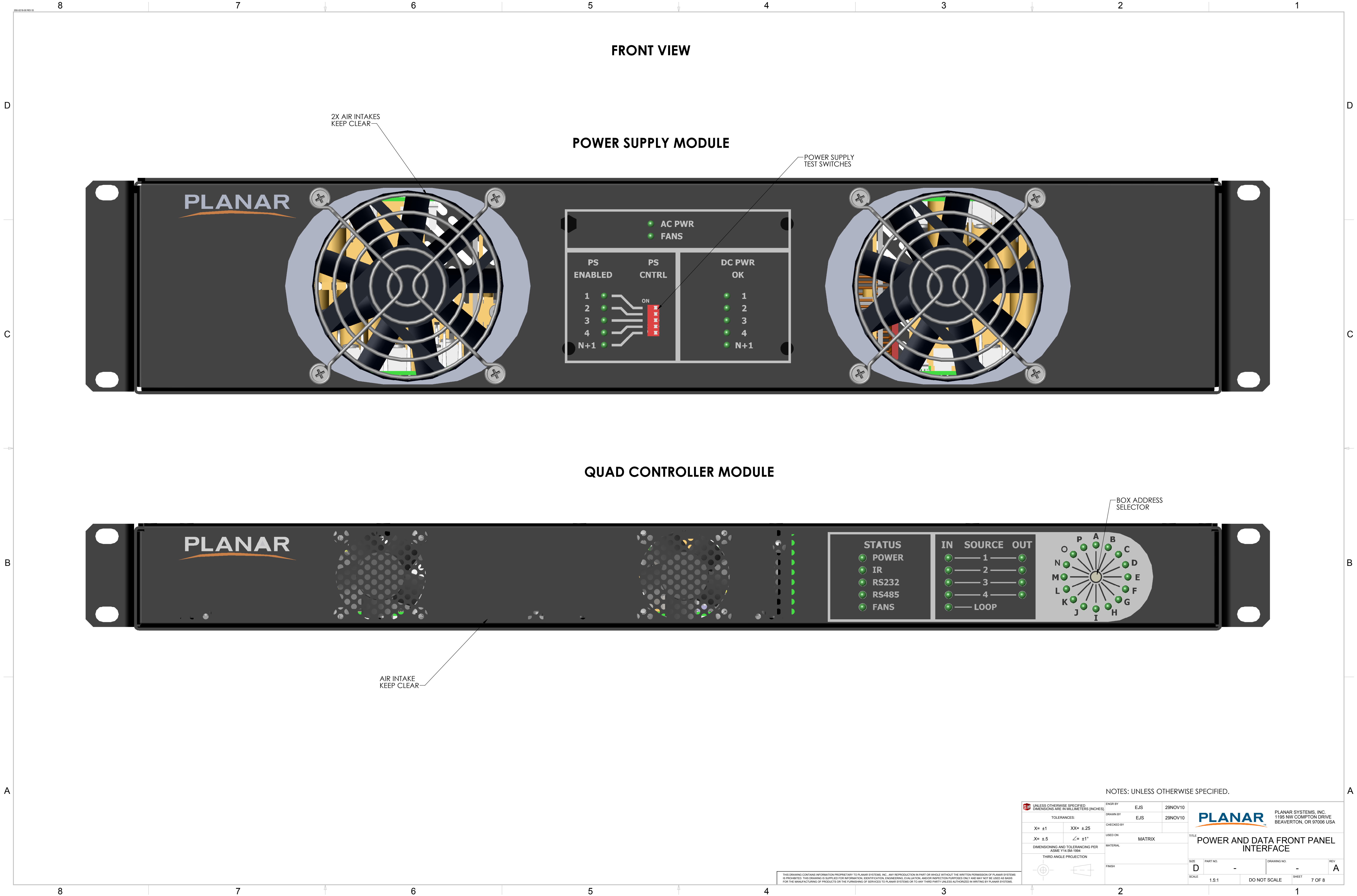
UNLESS OTHERWISE SPECIFIED DIMENSIONS ARE IN MILLIMETERS (INCHES)		ENGR BY EJS	19NOV10	PLANAR PLANAR SYSTEMS, INC. 1195 NW COMPTON DRIVE BEAVERTON, OR 97006 USA	
TOLERANCES:		DRAWN BY EJS	19NOV10		
X= ±1	XX= ±.25	CHECKED BY		TITLE TRIM INSTALL OPTIONS	
.X= ±.5	∠= ±1°	USED ON	MATRIX	SIZE D	
DIMENSIONING AND TOLERANCING PER ASME Y14.5M-1994		MATERIAL		PART NO. -	
THIRD ANGLE PROJECTION		FINISH		DRAWING NO. -	
SCALE 1:6		DO NOT SCALE		REV A	
				SHEET 4 OF 8	

THIS DRAWING CONTAINS INFORMATION PROPRIETARY TO PLANAR SYSTEMS, INC. ANY REPRODUCTION IN PART OR WHOLE WITHOUT THE WRITTEN PERMISSION OF PLANAR SYSTEMS IS PROHIBITED. THIS DRAWING IS SUPPLIED FOR INFORMATION, IDENTIFICATION, ENGINEERING, EVALUATION, AND/OR INSPECTION PURPOSES ONLY AND MAY NOT BE USED AS BASIS FOR THE MANUFACTURING OF PRODUCTS OR THE FURNISHING OF SERVICES TO PLANAR SYSTEMS OR TO ANY THIRD PARTY UNLESS AUTHORIZED IN WRITING BY PLANAR SYSTEMS.






UNLESS OTHERWISE SPECIFIED: DIMENSIONS ARE IN MILLIMETERS (INCHES)		ENGR BY EJS	19NOV10	PLANAR PLANAR SYSTEMS, INC. 1195 NW COMPTON DRIVE BEAVERTON, OR 97006 USA	
TOLERANCES:		DRAWN BY EJS	19NOV10		
X= ±1	XX= ±.25	CHECKED BY		TITLE ADA MATRIX COLUMN STAND	
.X= ±.5	∠= ±1°	USED ON	MATRIX		
DIMENSIONING AND TOLERANCING PER ASME Y14.5M-1994		MATERIAL		SIZE D	
THIRD ANGLE PROJECTION		FINISH			
THIS DRAWING CONTAINS INFORMATION PROPRIETARY TO PLANAR SYSTEMS, INC. ANY REPRODUCTION IN PART OR WHOLE WITHOUT THE WRITTEN PERMISSION OF PLANAR SYSTEMS IS PROHIBITED. THIS DRAWING IS SUPPLIED FOR INFORMATION, IDENTIFICATION, ENGINEERING, EVALUATION, AND/OR INSPECTION PURPOSES ONLY AND MAY NOT BE USED AS BASIS FOR THE MANUFACTURING OF PRODUCTS OR THE FURNISHING OF SERVICES TO PLANAR SYSTEMS OR TO ANY THIRD PARTY UNLESS AUTHORIZED IN WRITING BY PLANAR SYSTEMS.		SCALE 1:6		DRAWING NO. -	REV A
		DO NOT SCALE		SHEET 5 OF 8	





NOTES: UNLESS OTHERWISE SPECIFIED.

UNLESS OTHERWISE SPECIFIED DIMENSIONS ARE IN MILLIMETERS (INCHES)		ENGR BY	EJS	29NOV10			PLANAR SYSTEMS, INC. 1195 NW COMPTON DRIVE BEAVERTON, OR 97006 USA	
		DRAWN BY	EJS	29NOV10				
TOLERANCES:		CHECKED BY						
X= ±1	XX= ±.25	USED ON						
X= ±.5	∠= ±1°	MATERIAL						
DIMENSIONING AND TOLERANCING PER ASME Y14.5M-1994		FINISH						
THIRD ANGLE PROJECTION					TITLE POWER AND DATA FRONT PANEL INTERFACE			
								
					SIZE	PART NO.	DRAWING NO.	REV
					D	-	-	A
					SCALE	1:5:1	DO NOT SCALE	SHEET 7 OF 8

THIS DRAWING CONTAINS INFORMATION PROPRIETARY TO PLANAR SYSTEMS, INC. ANY REPRODUCTION IN PART OR WHOLE WITHOUT THE WRITTEN PERMISSION OF PLANAR SYSTEMS, INC. IS PROHIBITED. THIS DRAWING IS SUPPLIED FOR INFORMATION, IDENTIFICATION, ENGINEERING, EVALUATION, AND/OR INSPECTION PURPOSES ONLY AND MAY NOT BE USED AS BASIS FOR THE MANUFACTURING OF PRODUCTS OR THE FURNISHING OF SERVICES TO PLANAR SYSTEMS OR TO ANY THIRD PARTY UNLESS AUTHORIZED IN WRITING BY PLANAR SYSTEMS.

