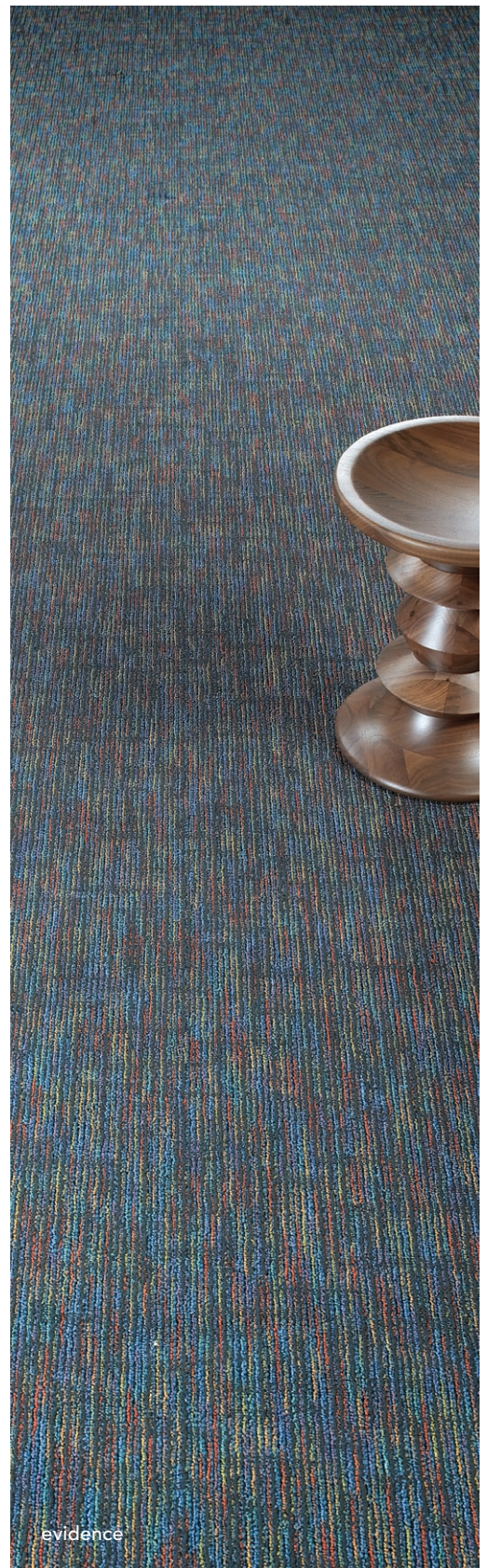
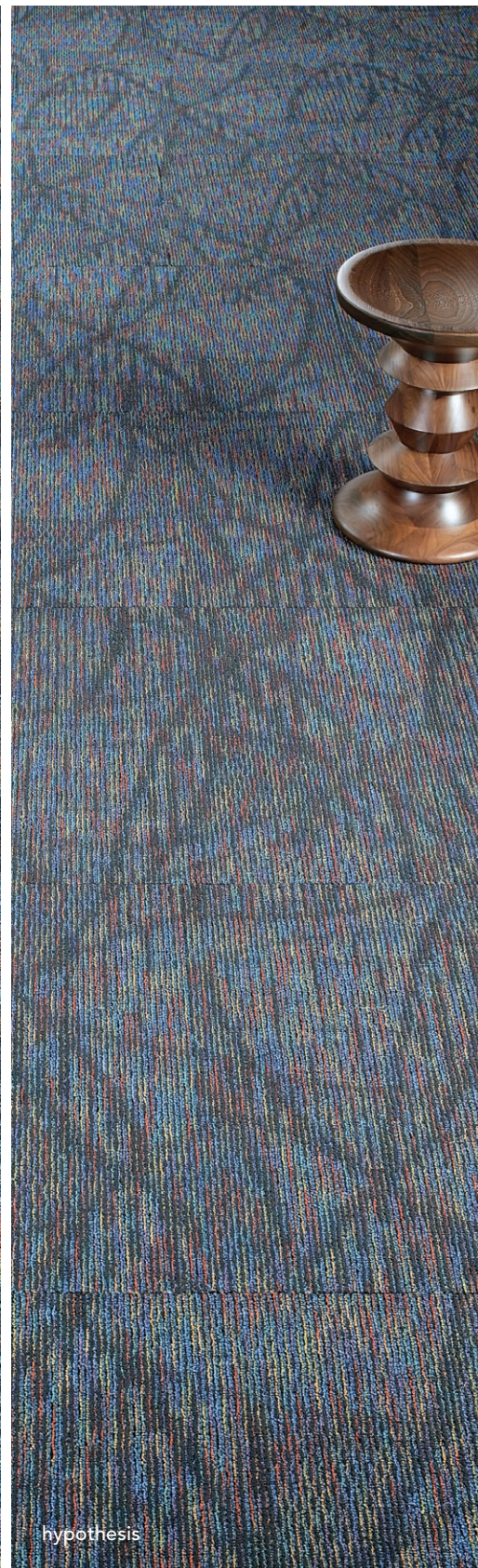


new Work.



An array of pattern and scale.

Using bright, multi-color striations with curvilinear elements and small scale geometrics, In Theory is the perfect flooring solution for high performance applications.

MANNINGTON
COMMERCIAL

IN THEORY COLLECTION

PERFORMANCE ATTRIBUTES

- Antron® Legacy Type 6,6 nylon
- Available in 24" x 24" modular and 12' broadloom
- Limited 15-Year ColorSafe® Bleach Resistant Warranty
- Limited 15-Year XGUARD® Stain Resistant Warranty
- Limited 15-Year UltraBac® RE Wear and Backing Warranty
- Limited Lifetime Integra HP® RE Wear and Backing Warranty
- Limited Lifetime Infinity® Modular Wear and Backing Warranty

ENVIRONMENTAL ATTRIBUTES

- UltraBac® RE and Integra HP® RE are certified NSF/ANSI-140 Platinum
- UltraBac® RE and Integra HP® RE contain a minimum of 10% post-consumer recycled content by total product weight
- Infinity® Modular contains pre-consumer recycled content
- Infinity® Modular is certified NSF/ANSI-140 Gold with Antron® fiber
- CRI Green Label Plus
- Adhesive meets VOC content limit of SCAQMD Rule 1168
- ISO 14001 registered manufacturing facility
- Contributes to LEED credits
- Carpet can be reclaimed through Mannington's LOOP® carpet reclamation program

ULTRABAC® RE (PROOF ONLY)

- Certified NSF/ANSI-140 Platinum
- Contains a minimum of 10% post-consumer recycled content by total product weight
- High tuft bind
- Resists edge ravel and delamination
- 12' broadloom
- Limited 15-Year Wear and Backing Warranty

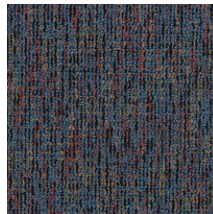
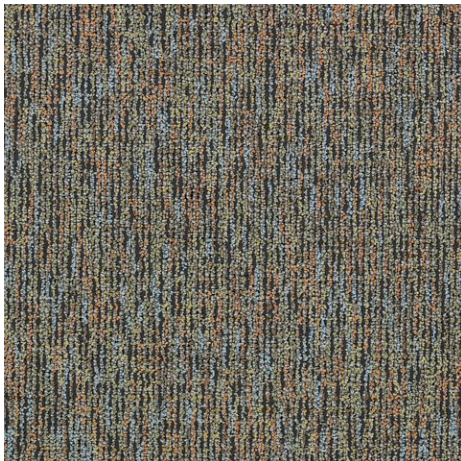
INTEGRA HP® RE (PROOF ONLY)

- Certified NSF/ANSI-140 Platinum
- Contains a minimum of 10% post-consumer recycled content by total product weight
- Impermeable moisture barrier
- Eliminates wick-back staining
- Superior tuft bind wet/dry
- Superior dimensional stability
- Passes British Spill and Moisture Impact Tests
- Flexible in cold/hot environments
- 12' performance broadloom
- Limited Lifetime Wear and Backing Warranty

INFINITY® MODULAR

- Certified NSF/ANSI-140 Gold with Antron® fiber
- Contains pre-consumer recycled content
- Impermeable moisture barrier
- Eliminates wick-back staining
- Superior tuft bind wet/dry
- Superior dimensional stability
- Passes British Spill and Moisture Impact Tests
- 24" x 24" modular carpet tile
- Limited Lifetime Wear and Backing Warranty

PROOF FEATURED all colors available in all three patterns



attest (3404)



axiom (5309)



essence (7306)



exhibit (8502)



expose (8410)



idea (6411)



impression (1205)



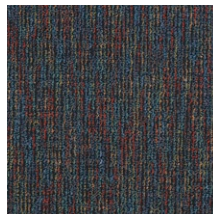
outline (4314)



premise (8203)



reason (3307)



tactics (3413)



tangible (8401)



trace (1412)