

# Miele

The diagram illustrates the installation requirements for the 30-inch electric range. It shows the range's profile with a cooktop and a rear vent. Key dimensions include:

- Height:** 685 mm - 995 mm (27" - 39 1/8") for the main body and 800 mm - 1100 mm (31 1/2" - 43 1/2") for the total height including the vent.
- Width:** 160 mm (6 1/4") for the cooktop and 470 mm (18 1/2") for the rear vent.
- Depth:** 52 mm (2") for the cooktop and 55 mm (2 1/8") for the rear vent.
- Location Codes:** 1 Air extraction mode, 2 Recirculation mode.
- Distance S:** Determined by the cooking surface.
- Recirculation Vent:** Located at the top of the rear vent.

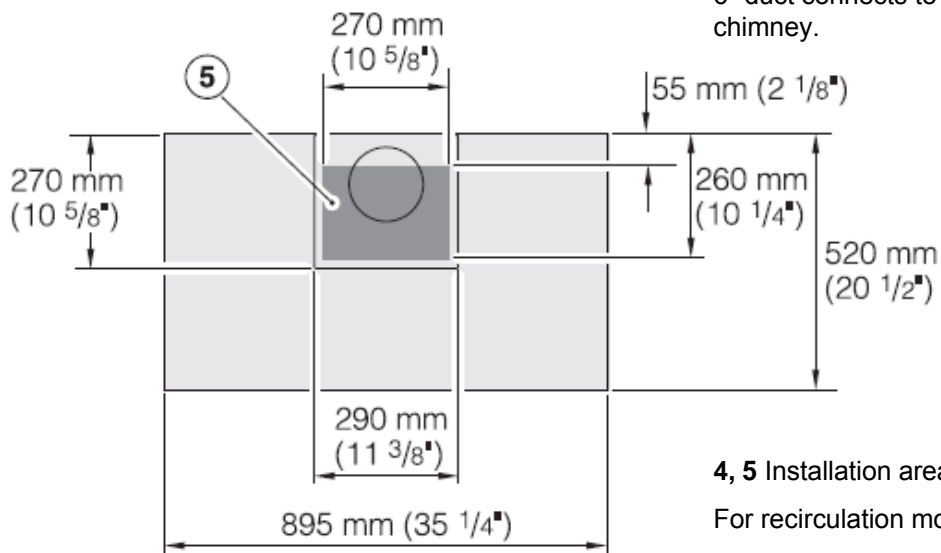
**Location Codes**

- E - 110 Volt – 15 Amp 3 wire power supply connects through top or rear of chimney.
- O - Standard 110 Volt Outlet
- Offset from duct center line by 2"

**Notes**

All installations must be done in accordance with local codes.

6" duct connects to blower system inside chimney.



Wall/ceiling area respectively for vent hole and outlet installation.

# Product Dimensions

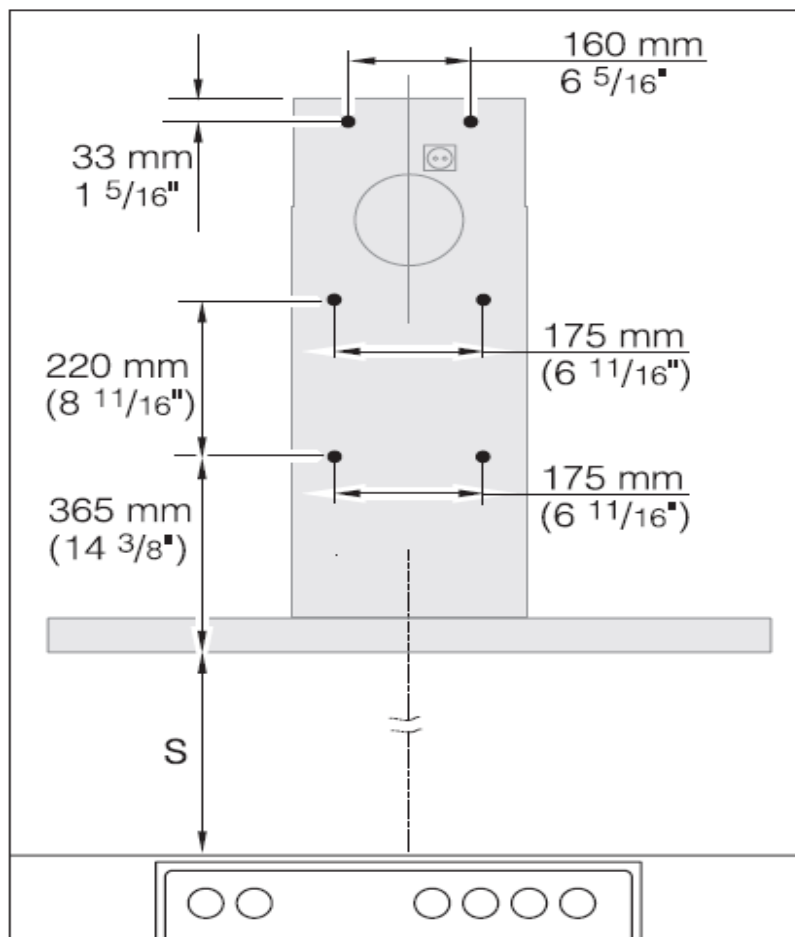
## Decorator Wall Hood

### DA6290W

### Drilling diagram



Page 2 of 2



#### Notes

Center unit over cooking surface

Distance "S" is determined by the cooking surface

(see hood instructions below for details)

Area behind mounting plates **MUST** be reinforced using a minimum of ½" plywood. Reinforcing material should be affixed to structural wall members

Provided a larger distance is not given by the manufacturer of the cooktop, follow the minimum safety distances between a cooktop and the bottom of the hood:

	Miele Cooktops	Non-Miele Cooktops
Electric Cooktops	24" (610 mm)	
Electric Barbeques and Fryers	26" (660 mm)	
Multiburners Gas cooktops ≤43,00 BTU (12.6 KW) And no burner > 15,000 BTU (6KW)	26" (660 mm)	30" (760 mm)
Single burner (Wok) ≤ 20,500 BTU (6 KW)	26" (660 mm)	30" (760 mm)
All other gas cooktops	30" (760 mm)	

Drawing is not to scale - Specification Sheets 010411