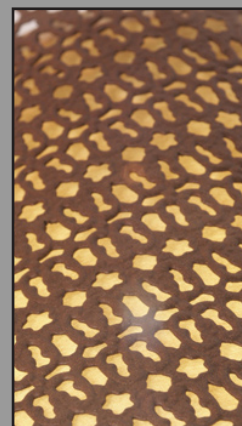
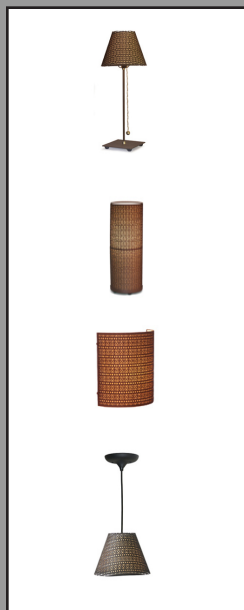


# LENA TABLE LAMP

## RELATED PRODUCTS



RUST BASE



METAL AND PARCHMENT



PARCHMENT

## PRODUCT DESCRIPTION

The Lena filigree metal shade creates a richly patterned light, while the parchment colored under-shade provides a warm, even down light. The base and metal over-shade have a rust finish. The table lamp has a curling hemp pull cord and brass details. The Tori and Casbah are available in matching table lamps, pendants and wall sconces.

## SPECIFICATIONS

<b>Style Code</b>	35-T
<b>Collection</b>	Tori & Lena
<b>Dimensions</b>	29"H x 6"W
<b>Key Features</b>	Shade – rust filigree metal over parchment or parchment only Finish – rust painted metal base Switch style – socket pull chain On/Off One 40w medium incandescent base bulb – Type B
<b>Wiring Options</b>	--
<b>Designer</b>	Adam Jackson Pollock and Ben Goldstone
<b>Manufacturer</b>	Fire Farm, Inc. in the USA
<b>Additional Notes</b>	Custom shade or finish may be ordered for modest additional charge

## ORDERING & SHIPPING INFORMATION

<b>Please specify</b>	Style code, shade color
<b>Shipping Weight</b>	6 lbs



PO Box 458

Elkader, IA 52043

P 563.245.3515

F 563.245.3516

Info@FireFarm.com

www.FireFarm.com