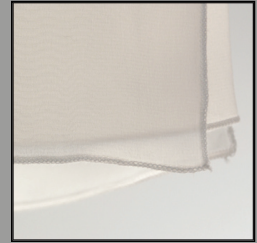


# HEAVEN & EARTH WALL SCONCE

## RELATED PRODUCTS



WHITE SILK  
CREPE DE CHINE



RED SILK  
CREPE DE CHINE

## PRODUCT DESCRIPTION

Illuminated silk panels float in space in our Heaven & Earth lamps. The light it casts is suitable bright, but soft. Our Heaven & Earth series offers many options: available as a floor lamp, pendant in three sizes, two table lamps, two chandeliers and a wall sconce. Shades are removable for cleaning.

## SPECIFICATIONS

<b>Style Code</b>	75-S
<b>Collection</b>	Heaven & Earth
<b>Dimensions</b>	10"H x 10"W x 4"D
<b>Key Features</b>	Shade – white or red silk crepe de chine One 100w medium incandescent base bulb – Type A
<b>Wiring Options</b>	Hardwire (incandescent or fluorescent)
<b>Designer</b>	Elizabeth Meredith
<b>Manufacturer</b>	Fire Farm, Inc. in the USA
<b>Additional Notes</b>	Custom shade may be ordered for modest additional charge. Shades may be fire retardant treated for contract applications for an additional charge.

## ORDERING & SHIPPING INFORMATION

**Please specify** Style code, shade color, incandescent or fluorescent  
**Shipping Weight**



PO Box 458

Elkader, IA 52043

P 563.245.3515

F 563.245.3516

Info@FireFarm.com

www.FireFarm.com