

# cura

FAMILY OF SEATING





# cura

## SMART DESIGN FOR SMART SPACES

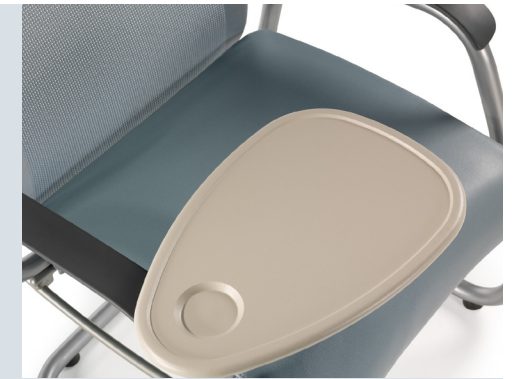
With a unique flexing frame to accommodate subtle movements that can increase comfort while reducing anxiety, Cura™ fits perfectly into a patient room or waiting environment. Created by award-winning designer Michael Shields, Cura provides refined ergonomics, ease of use, and site renewable high-wear components in a simple but effective statement of line.



**THE CURA FAMILY** is available in a four-leg base, sled base, mid-back, high-back, 21" and 24" seat widths, wood or plastisol arms, and single and tandem versions. An ottoman, swivel tablet, and coordinating ganging and freestanding tables complete the collection.

## CHOICES

Cura offers superior comfort and performance for both patient and waiting rooms. Available in multiple frame styles, back heights, and seat widths, Cura can be further customized with a swivel tablet and wood or plastisol arm caps.



## ACCOMMODATING

The steel frame offers a passive flex that encourages movement, aiding in overall circulation and reduced anxiety. Cura's curved back mimics the user's posture for proper support.



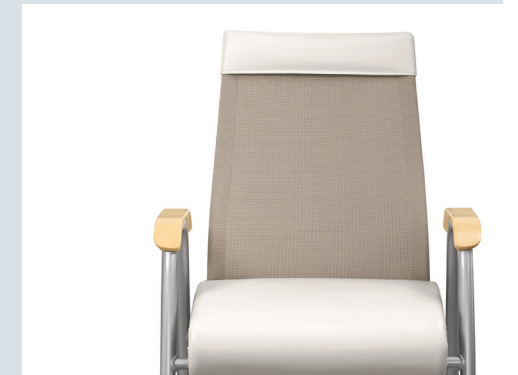
## COMFORTABLE

CuraNet's integrated suspension system provides superior, breathable support. Stain-resistant and anti-microbial, CuraNet combines with Promessa – a durable PVC-free polyurethane – to create comfortable, cleanable options for the seat, back, and headrest.



## DURABLE

The Cura frame is constructed of steel tubing and rods for structural integrity and features a clean out space between the seat and back, making Cura a strong and cleanable solution for the 24/7 healthcare environment.



## SUSTAINABLE

Cura's design accommodates quick and easy replacement in the field. The upholstered seat is also reversible to provide a refurbished look without new component expense.



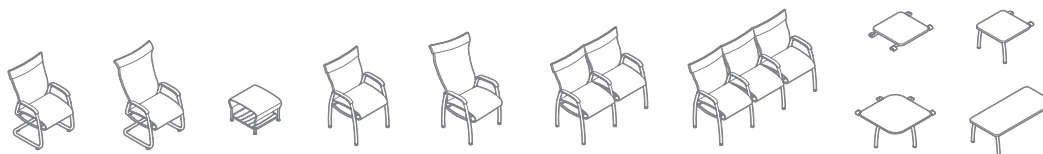


# cura



Customer Care: 1-800-342-8562  
customer care@nurture.com

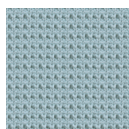
## STATEMENT OF LINE



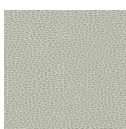
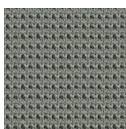
	OVERALL DIMENSIONS			SEAT DIMENSIONS			ARM
	DEPTH	WIDTH	HEIGHT	DEPTH	WIDTH	HEIGHT	HEIGHT
MID-BACK SINGLE-SEAT	24 <sup>1</sup> / <sub>2</sub> "	26" / 29"	40 <sup>1</sup> / <sub>2</sub> "	19"	21" / 24"	18 <sup>1</sup> / <sub>2</sub> "	25 <sup>3</sup> / <sub>4</sub> "
HIGH-BACK SINGLE-SEAT	24 <sup>1</sup> / <sub>2</sub> "	26" / 29"	48"	19"	21" / 24"	18 <sup>1</sup> / <sub>2</sub> "	25 <sup>3</sup> / <sub>4</sub> "
TWO-SEAT TANDEM	24 <sup>1</sup> / <sub>2</sub> "	48 <sup>3</sup> / <sub>4</sub> " / 55"	40 <sup>1</sup> / <sub>2</sub> "	19"	21" / 24"	18 <sup>1</sup> / <sub>2</sub> "	25 <sup>3</sup> / <sub>4</sub> "
THREE-SEAT TANDEM	24 <sup>1</sup> / <sub>2</sub> "	73" / 82"	40 <sup>1</sup> / <sub>2</sub> "	19"	21" / 24"	18 <sup>1</sup> / <sub>2</sub> "	25 <sup>3</sup> / <sub>4</sub> "
OTTOMAN	18 <sup>1</sup> / <sub>4</sub> "	16"	12 <sup>1</sup> / <sub>4</sub> "	NA	NA	NA	NA
TANDEM GANGING TABLE	22 <sup>1</sup> / <sub>4</sub> "	30"	16"	NA	NA	NA	NA
END OF RUN GANGING TABLE	22 <sup>1</sup> / <sub>4</sub> "	26"	16"	NA	NA	NA	NA
CORNER GANGING TABLE	31 <sup>3</sup> / <sub>4</sub> "	31 <sup>3</sup> / <sub>4</sub> "	16"	NA	NA	NA	NA
FREESTANDING TABLE	22 <sup>1</sup> / <sub>4</sub> "	46 <sup>1</sup> / <sub>2</sub> "	16"	NA	NA	NA	NA

## UPHOLSTERY

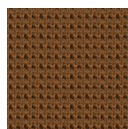
AQUAMARINE



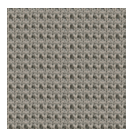
ASH



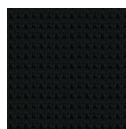
CAMEL



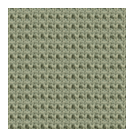
COCOA



EBONY



LILY PAD

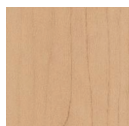


Chair testing – loads per seat:  
Dynamic = 300 lbs.  
Lifetime Warranty. Refer to specification  
guide for complete product details.

Upholstery is available on seat, back, and  
headrest. Paint is available on chair frame and  
table legs. Plastisol and wood are available on  
arm caps. Laminate is available on table top.

## LAMINATE/WOOD

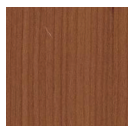
SUGAR LOAF  
MAPLE



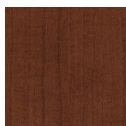
ALMOND  
CHERRY



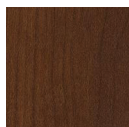
SAMBA  
CHERRY



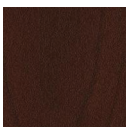
COGNAC  
CHERRY



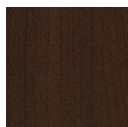
DARK RUM  
CHERRY



SHIRAZ  
CHERRY

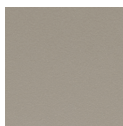


FLAMENCO  
CHERRY



## PAINTS

CHAMPAGNE



PLATINUM



SAND



BLACK



## PLASTISOL

STERLING  
DARK

