



*Flexibility and style  
for the healthcare environment.*

CASEGOODS



Folio offers a variety of flexible shelving and storage configurations (above) allowing for additional shelves to be added in the field. A garage application provides convenient access to stored carts or other items (left).

## DESIGN INSPIRATION

With all the changes happening in today's healthcare landscape, a modular approach is no longer just another solution – it's the smarter solution. Folio™ delivers progressive, modular components for hard-working environments. Whether renovating an existing space or undertaking a new construction project, Folio is faster to specify, order and install – and easier to modify and move when change is required. Folio provides great performance and great flexibility. Its manufactured components provide consistent, dependable quality and a unified appearance, both at the time of install and over the life of the product. Whether in exam rooms, lab environments, caregiver stations or respite areas, Folio's broad offering provides smart design and easy adaptability to meet the challenge – today and tomorrow.



The Euro hinge (top right) comes standard on cabinet drawers and doors and neatly hides hardware behind doors that open 110°. The optional Five Knuckle hinge (left, bottom right) allows doors to swing a full 270° for maximum access to cabinet interiors. (180° if connected to an adjacent cabinet.)

## FEATURES AND BENEFITS

**FLEXIBLE** Folio's smart design provides a wealth of component choices and the ability to make changes over time through reconfiguration and expansion.

**PERFORMANCE** Consistent quality with a unified appearance, Folio delivers a long-term commitment to service, including BIFMA quality and safety testing.

**DESIGN** Delivers crisp, clean lines in healthcare settings with matching wood grains on doors and drawers. Recessed cabinet base allows refined integration of cove molding. Unique Euro hinge design conceals hardware behind cabinet doors.

**SUSTAINABLE** Our modular casework incorporates environmentally responsible materials, contributes to LEED certification and supports infection control through ease of cleaning and maintenance.

**ACCOMMODATING** Cabinets can be individually leveled and feature hinge options for maximum access to cabinet interiors. ADA surface heights, sink cabinets with angled fronts, and sloped-top cabinet options are available to meet specific requirements.

**DURABLE** All edges are banded to provide optimum moisture resistance. Solid surface tops are also available for ease of cleaning and increased infection control.



D-pull (standard)



Contemporary pull

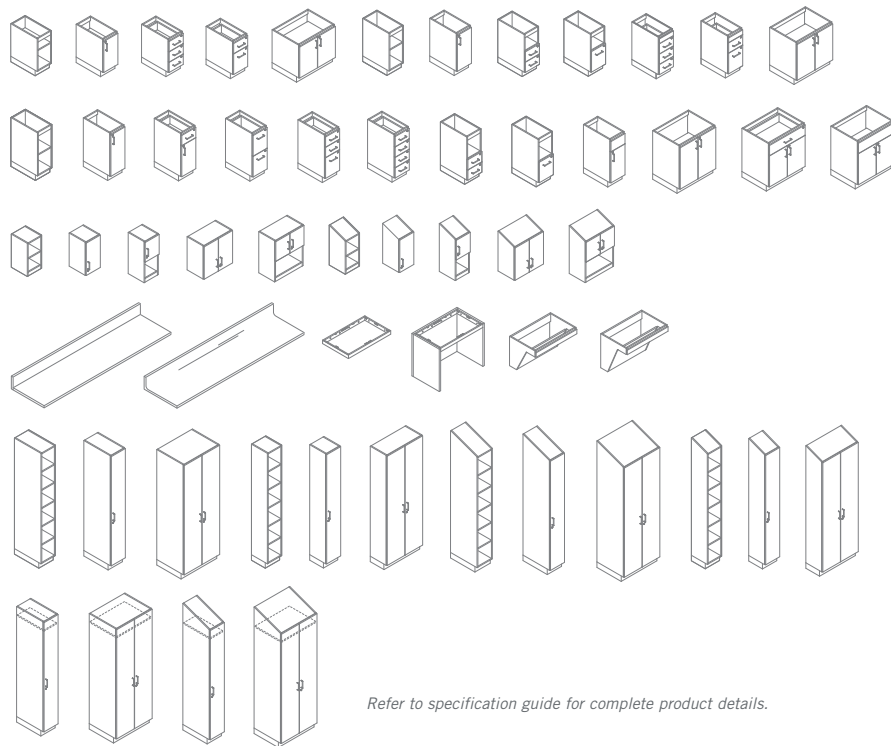


Opus pull



Jazz pull

STATEMENT OF LINE



Refer to specification guide for complete product details.