
Folio

Tip: Folio has replaced Cesar product. To see Cesar style numbers please refer to Specification Guides - Adstock at in2.steelcase.com.



Statement of Line **150**



Understanding

28"H Base Cabinets	156
33"H ADA Base Cabinets	160
36"H Base Cabinets	164
Sink Cabinets	168
Storage Cabinets	172
Wardrobe Cabinets	176
Bookcases	178
Upper Storage Cabinets	180
Worksurfaces	182
Desk Frames	184
Accessories	186
Storage Capacities	188

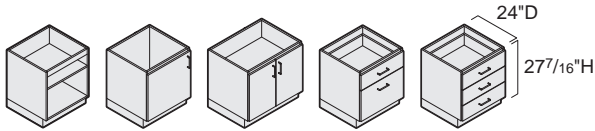


Specifying

28"H Base Cabinets	192
33"H ADA Base Cabinets	194
36"H Base Cabinets	198
Sink Cabinets	201
84"H Storage Cabinets	202
92"H Storage Cabinets with Sloped Top	204
84"H Wardrobe Cabinets	206
92"H Wardrobe Cabinets with Sloped Top	207
84"H Bookcases	208
89"H Bookcases with Sloped Top	210
Upper Storage Cabinets	212
Upper Storage Cabinets with Sloped Top	214
Laminate Worksurfaces	216
4"H Laminate Sidesplash	217
Solid Surface Worksurfaces	218
4"H Solid Surface Sidesplash	219
Desk Frames	220
Accessories	221

Statement of Line

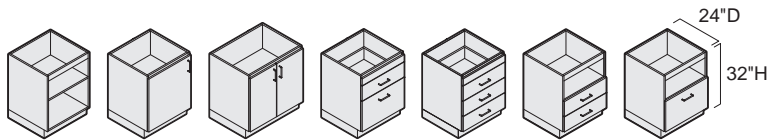
Folio



Understanding
 ▶ Page 156
 Specifying
 ▶ Page 192

28"H Base Cabinets

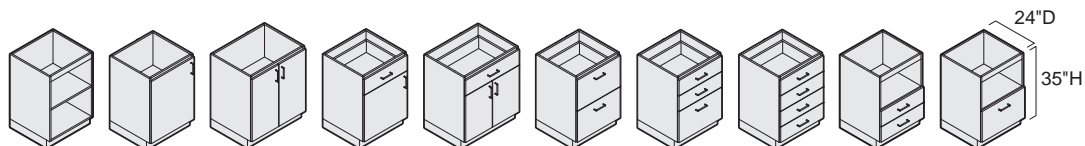
	12"W	18"W	21"W	24"W	30"W	36"W
Open with one adjustable shelf	●	●	●	●	●	●
With single door and one adjustable shelf	●	●	●	●		
With double doors and one adjustable shelf					●	●
With one small drawer and one large drawer	●	●	●	●	●	●
With three small drawers	●	●	●	●	●	●



Understanding
 ▶ Page 160
 Specifying
 ▶ Page 194

33"H ADA Base Cabinets

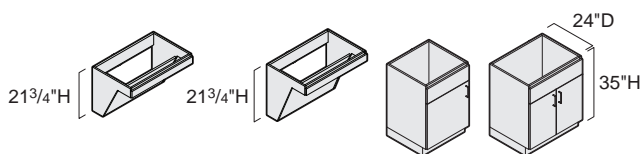
	12"W	18"W	21"W	24"W	30"W	36"W
Open with one adjustable shelf	●	●	●	●	●	●
With single door and one adjustable shelf	●	●	●	●		
With double doors and one adjustable shelf					●	●
With one small drawer and one large drawer	●	●	●	●	●	●
With three small drawers	●	●	●	●	●	●
With open shelf and two small drawers	●	●	●	●	●	●
With open shelf and one large drawer	●	●	●	●	●	●



Understanding
 ▶ Page 164
 Specifying
 ▶ Page 198

36\"/>

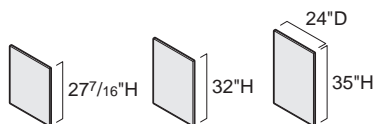
	12\"/>					
Open with one adjustable shelf	●	●	●	●	●	●
With single door and one adjustable shelf	●	●	●	●		
With double doors and one adjustable shelf					●	●
With one small drawer, single door, and one adjustable shelf	●	●	●	●		
With one small drawer, double doors, and one adjustable shelf					●	●
With two large drawers	●	●	●	●	●	●
With two small drawers and one large drawer	●	●	●	●	●	●
With four small drawers	●	●	●	●	●	●
With open shelf and two small drawers	●	●	●	●	●	●
With open shelf and one large drawer	●	●	●	●	●	●



Understanding
 ▶ Page 168
 Specifying
 ▶ Page 201

Sink Cabinets

	24\"/>
32\"/>	
35\"/>	
35\"/>	
35\"/>	

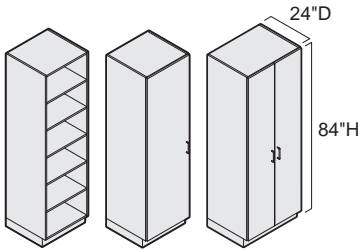


Specifying
 ▶ Pages 193, 196,
 and 200

Support End Panels

Adjacent Cabinet Height	28\"/>
24\"/>	

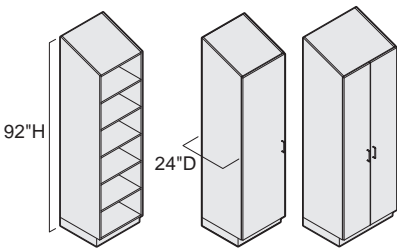
Statement of Line Folio, continued



Understanding
▶ Page 172
Specifying
▶ Page 202

84"H Storage Cabinets

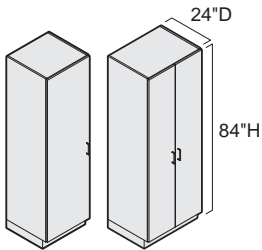
	12"W	18"W	21"W	24"W	30"W	36"W
Open with five shelves	●	●	●	●	●	●
With single door and five shelves	●	●	●	●		
With double doors and five shelves					●	●



Understanding
▶ Page 172
Specifying
▶ Page 204

92"H Storage Cabinets with Sloped Top

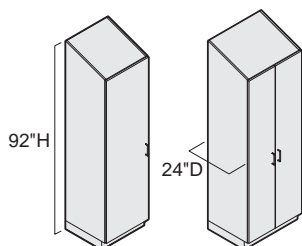
	12"W	18"W	21"W	24"W	30"W	36"W
Open with five shelves	●	●	●	●	●	●
With single door and five shelves	●	●	●	●		
With double doors and five shelves					●	●



Understanding
▶ Page 176
Specifying
▶ Page 206

84"H Wardrobe Cabinets

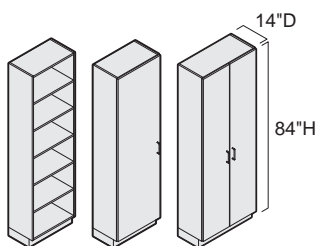
	12"W	18"W	21"W	24"W	30"W	36"W
With single door and one fixed shelf	●	●	●	●		
With double doors and one fixed shelf					●	●



Understanding
 ▶ Page 176
 Specifying
 ▶ Page 207

92"H Wardrobe Cabinets with Sloped Top

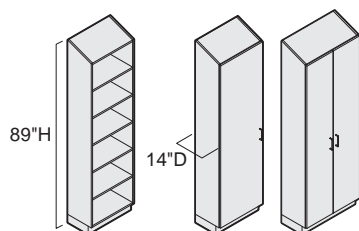
	12"W	18"W	21"W	24"W	30"W	36"W
With single door and one fixed shelf	●	●	●	●		
With double doors and one fixed shelf					●	●



Understanding
 ▶ Page 178
 Specifying
 ▶ Page 208

84"H Bookcases

	12"W	18"W	21"W	24"W	30"W	36"W
Open with five shelves	●	●	●	●	●	●
With single door and five shelves	●	●	●	●		
With double doors and five shelves					●	●

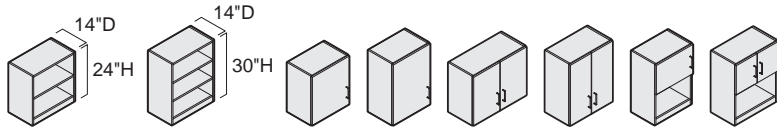


Understanding
 ▶ Page 178
 Specifying
 ▶ Page 210

89"H Bookcases with Sloped Top

	12"W	18"W	21"W	24"W	30"W	36"W
Open with five shelves	●	●	●	●	●	●
With single door and five shelves	●	●	●	●		
With double doors and five shelves					●	●

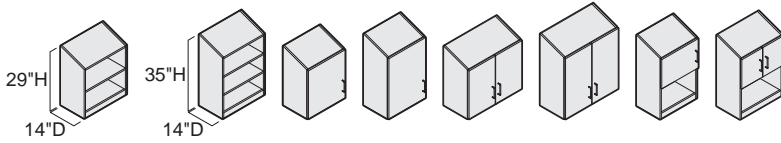
Statement of Line Folio, continued



Understanding
 ▶ Page 180
 Specifying
 ▶ Page 212

Upper Storage Cabinets

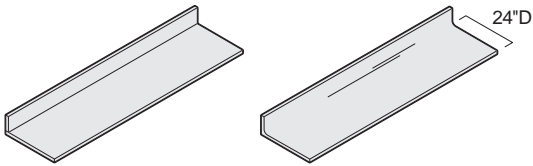
	12\"W	18\"W	21\"W	24\"W	30\"W	36\"W
24\"H open storage cabinet	●	●	●	●	●	●
30\"H open storage cabinet	●	●	●	●	●	●
24\"H with single door	●	●	●			
30\"H with single door	●	●	●			
24\"H with double doors				●	●	●
30\"H with double doors				●	●	●
30\"H with single door and open shelf	●	●	●			
30\"H with double doors and open shelf				●	●	●



Understanding
 ▶ Page 180
 Specifying
 ▶ Page 214

Upper Storage Cabinets with Sloped Top

	12\"W	18\"W	21\"W	24\"W	30\"W	36\"W
29\"H open storage cabinet	●	●	●	●	●	●
35\"H open storage cabinet	●	●	●	●	●	●
29\"H with single door	●	●	●			
35\"H with single door	●	●	●			
29\"H with double doors				●	●	●
35\"H with double doors				●	●	●
35\"H with single door and open shelf	●	●	●			
35\"H with double doors and open shelf				●	●	●



Understanding
 ▶ Page 182
 Specifying
 ▶ Page 216

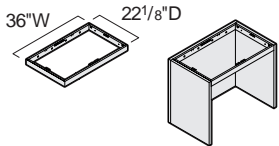
Worksurfaces

24"D Laminate worksurfaces with 4" backsplash

12"W	18"W	21"W	24"W	27"W	30"W	33"W	36"W	39"W	42"W	45"W	48"W	51"W
●	●	●	●	●	●	●	●	●	●	●	●	●
54"W	60"W	66"W	72"W	78"W	84"W	90"W	96"W	102"W	108"W	114"W	120"W	
●	●	●	●	●	●	●	●	●	●	●	●	

24"D Solid surface worksurfaces with integrated backsplash

12"W	18"W	21"W	24"W	27"W	30"W	33"W	36"W	39"W	42"W	45"W	48"W	51"W
●	●	●	●	●	●	●	●	●	●	●	●	●
54"W	60"W	66"W	72"W	78"W	84"W	90"W	96"W	102"W	108"W	114"W	120"W	
●	●	●	●	●	●	●	●	●	●	●	●	



Understanding
 ▶ Page 184
 Specifying
 ▶ Page 220

Desk Frames

	12"W	18"W	24"W	30"W	36"W	42"W	48"W	54"W	60"W	72"W
Without back panel for use with common top	●	●	●	●	●	●	●	●	●	●
With back panel for use with common top			●	●	●					



Folio

Folio

28"H Base Cabinets

28"H base cabinets meet storage needs in clinical settings. Base cabinets connect to a worksurface to create a single unit or a multicabinet wall unit.

Top of cabinet is open and requires attachment to a worksurface that is ordered separately.

Back is finished.

Sides are finished so the cabinet can stand alone or be used in right- or left-hand positions.

All edges are finished from the factory with matching plastic trim.

Large drawers and 36"W small drawers have single-wall steel sides and full extension, heavy-duty slides to handle the additional load.

Adjustable glides adjust for installation on uneven floors. Adjustability range is 1 1/2".

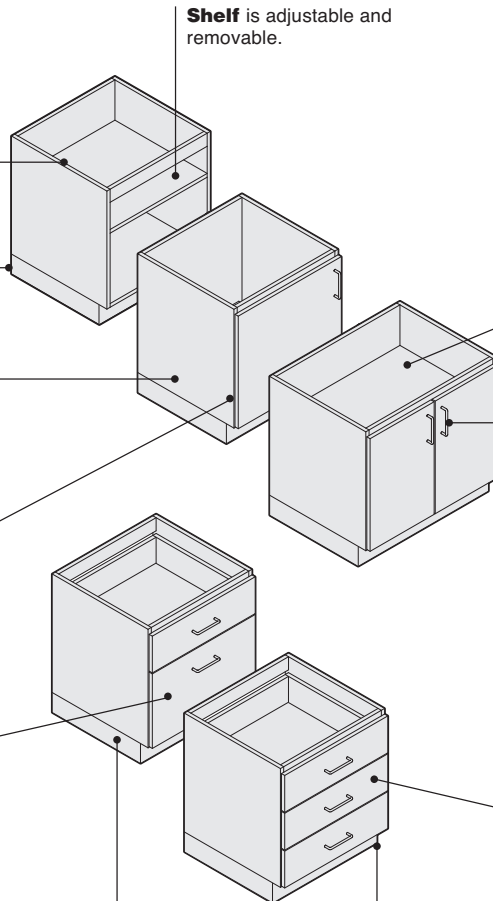
Base elevates the cabinet and is 3 3/4"H with the glide in the lowest position.

Shelf is adjustable and removable.

Adjustable shelf is standard inside the cabinet. Shelves adjust in 1 1/4" increments. Additional shelves are available, and must be specified separately.

D pulls are standard on doors and drawers and are nickel only. Additional pull styles are available as an option.

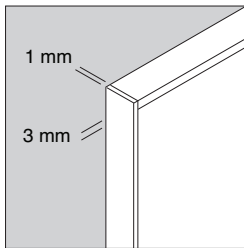
Small drawers have single-wall steel sides, and three quarter extension slides. Drawer configurations are available to accommodate supplies and equipment.
Tip: 36"W small drawers have full extension, heavy-duty slides to handle the additional load.



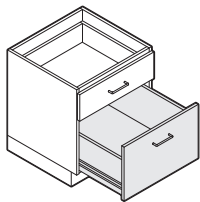
Actual Dimensions

Features	Overall Depth	Width	Height without Worksurface	Height with Laminate Worksurface	Height with Solid Worksurface
With open shelves	24"	12", 18", 21", 24", 30", or 36"	27 ⁷ / ₁₆ "	28 ⁵ / ₈ "	28 ⁷ / ₁₆ "
With single door	24"	12", 18", 21", or 24"	27 ⁷ / ₁₆ "	28 ⁵ / ₈ "	28 ⁷ / ₁₆ "
With double doors	24"	30" or 36"	27 ⁷ / ₁₆ "	28 ⁵ / ₈ "	28 ⁷ / ₁₆ "
With drawers	24"	12", 18", 21", 24", 30", or 36"	27 ⁷ / ₁₆ "	28 ⁵ / ₈ "	28 ⁷ / ₁₆ "

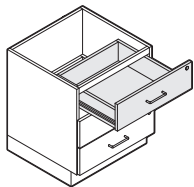
Product Details



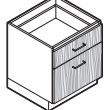
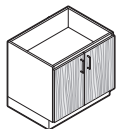
Edges on cabinets are matching 1 mm plastic trim. Drawer and door edges are matching 3 mm plastic trim.



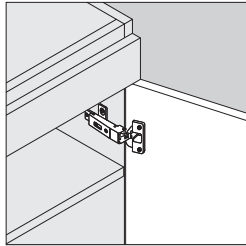
Large drawers and 36"W small drawers, when opened, extend their full depth.



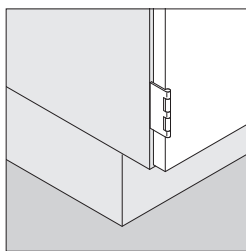
Small drawers with the exception of 36"W small drawers, when opened, extend three quarters of their depth.



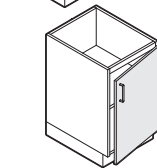
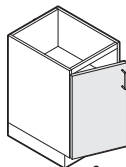
Woodgrain laminate matches on all door and drawer sets on base cabinets.



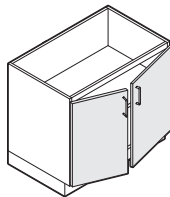
Euro hinge is standard on cabinet door and allows the door to open a full 110°.



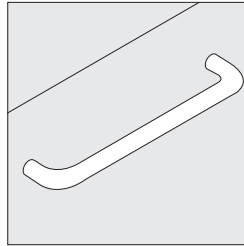
Five-knuckle hinge is optional and allows the door to open 270° or 180° if connected to adjacent cabinet.



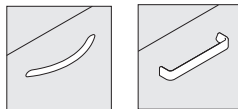
Single-door cabinets are hinged on the left or right side. A left-hand unit has the hinge on the left side of the door. A right-hand unit has the hinge on the right side of the door.



Double-door cabinets open from the center out.



D pulls are standard.



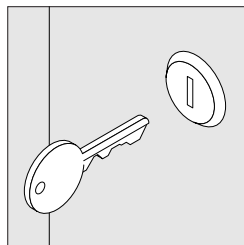
Contemporary Jazz



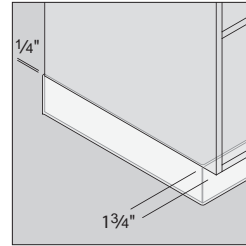
Opus

Additional door and drawer pull options are available. Optional pulls include:

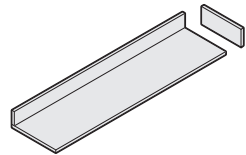
- Contemporary
- Jazz
- Opus



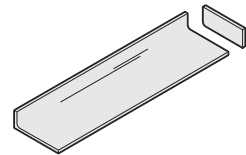
Lock is optional and factory- or field-installed to secure the doors or top drawer of the cabinet. Factory-installed locks are available keyed random only. Optional field-installed locks are available with consecutive, specific, or random keying options. Master-keyed locks are also available. Field-installed lock cylinders must be specified separately. ▶ Lock and Keying, Page 716



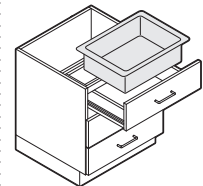
Cove molding must be field installed on base to complete installation. The front base of cabinet is recessed 1 3/4". The sides and back are set in 1/4" to allow cove molding to fit flush. Cove molding must be supplied locally.



Laminate worksurface, ordered separately, is available with High-Pressure Laminate or custom laminate. High-Pressure Laminate has a matching 3 mm plastic front edge and 1 mm plastic edge on sides and back. Backsplash is standard with the worksurface. Laminate sidesplash is also available and must be ordered separately. ▶ Pages 216-219

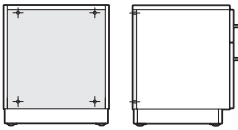


Solid surface worksurface, ordered separately, has an integrated backsplash. A solid surface sidesplash is also available and must be ordered separately.



Plastic drawer liner is available to place in any drawer of base cabinet to allow for ease of cleaning. They must be ordered separately.

Connections

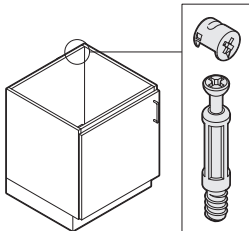


Base cabinets must always be fastened to a wall. Attachment hardware is included with cabinets.



Filler closes the gap between a cabinet and a structural wall. Additional length worksurface will be required. Field cutting of filler and worksurface may be required to achieve architectural fit.

▶ Page 222



Cam-lock assembly hardware is used.

Surface Materials

Cabinet, drawer front, door front, and shelf

- Melamine

Edges

- Matching plastic

Drawer sides

- White paint only

D pulls, contemporary, and jazz pulls

- Nickel

Opus pulls

- Champagne

Euro and five-knuckle hinges

- Nickel

Face lock

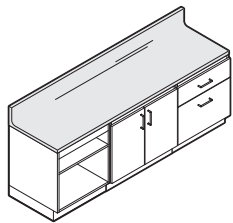
- 9201 Polished Chrome only

Filler

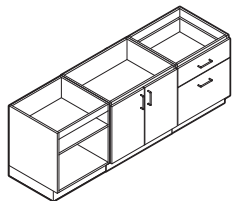
- Melamine

Shipping

All cabinets ship fully assembled.



Worksurface is available to connect to one cabinet or to span multiple cabinets. It fastens to the top of cabinet with brackets and is field-installed. Brackets are included as standard with base cabinets.



Bolts are used to align adjacent cabinets in a multi-unit configuration. The bolts can be removed and reinstalled if a different multi-unit configuration is desired.

Tip: Side of cabinet will be defaced by bolts. Exposed bolt holes will require field fix.

Folio

33"H ADA Base Cabinets

33"H ADA base cabinets provide a modular solution to meet storage needs in clinical settings. Base cabinets connect to a worksurface to create a single unit or a multicabinet wall unit.

Top of cabinet is open and requires attachment to a worksurface that is ordered separately.

Back is finished.

Sides are finished so the cabinet can stand alone or be used in right- or left-hand positions.

Adjustable glides adjust for installation on uneven floors. Adjustability range is 1 1/2".

Small drawers have single-wall steel sides, and three quarter extension slides. Drawer configurations are available to accommodate supplies and equipment.

Tip: 36"W small drawers have full extension, heavy-duty slides to handle the additional load.

Shelf is adjustable and removable.

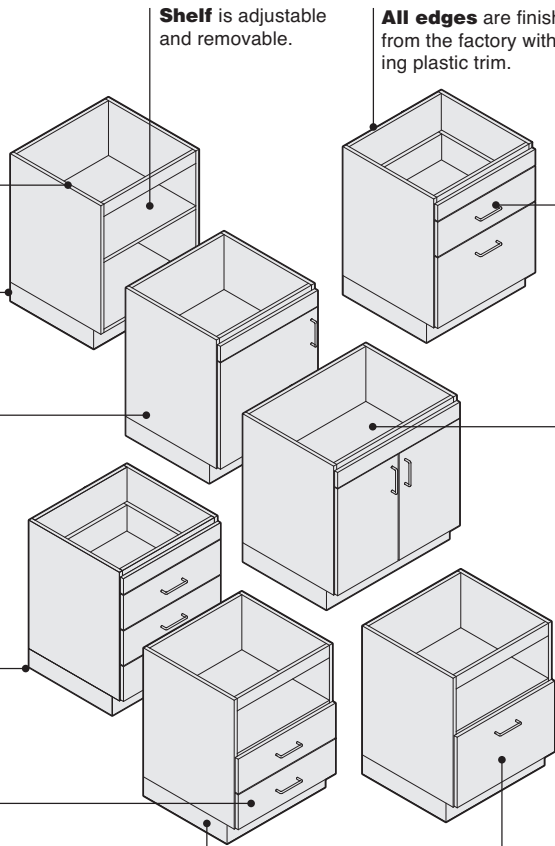
All edges are finished from the factory with matching plastic trim.

D pulls are standard on doors and drawers and are nickel only. Additional pull styles are available as an option.

Adjustable shelf is standard inside the cabinet. Shelves adjust in 1/4" increments. Additional shelves are available and must be specified separately.

Base elevates the cabinet and is 3 3/4"H with the glide in the lowest position.

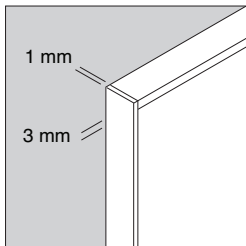
Large drawers and 36"W small drawers have single-wall steel sides and full extension, heavy-duty slides to handle the additional load.



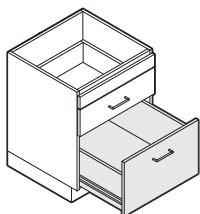
Actual Dimensions

Features	Overall Depth	Width	Height without Worksurface	Height with Laminate Worksurface	Height with Solid Worksurface
With open shelves	24"	12", 18", 21", 24", 30", or 36"	32"	33 3/16"	33"
With single door	24"	12", 18", 21", or 24"	32"	33 3/16"	33"
With double doors	24"	30" or 36"	32"	33 3/16"	33"
With drawers	24"	12", 18", 21", 24", 30", or 36"	32"	33 3/16"	33"

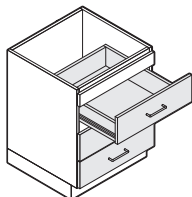
Product Details



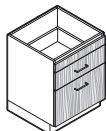
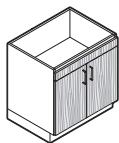
Edges on cabinets are matching 1 mm plastic trim. Drawer and door edges are matching 3 mm plastic trim.



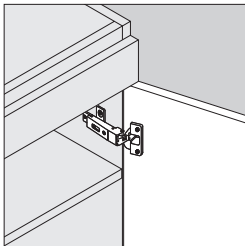
Large drawers and 36"W small drawers, when opened, extend their full depth.



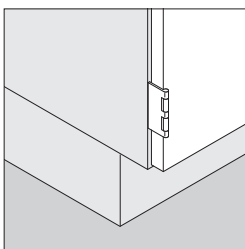
Small drawers with the exception of 36"W small drawers, when opened, extend three quarters of their depth.



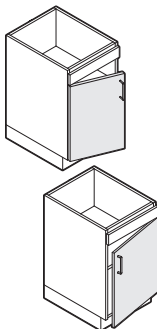
Woodgrain laminate matches on all door and drawer sets on base cabinets.



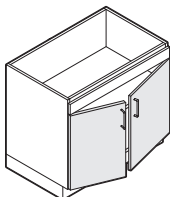
Euro hinge is standard on cabinet door and allows the door to open a full 110°.



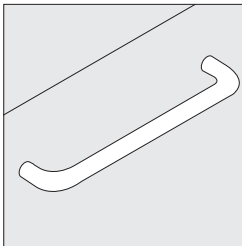
Five-knuckle hinge is optional and allows the door to open 270° or 180° if connected to adjacent cabinet.



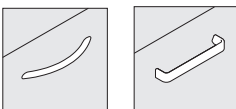
Single-door cabinets are hinged on the left or right side. A left-hand unit has the hinge on the left side of the door. A right-hand unit has the hinge on the right side of the door.



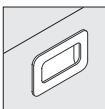
Double-door cabinets open from the center out.



D pulls are standard.



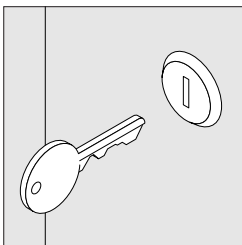
Contemporary Jazz



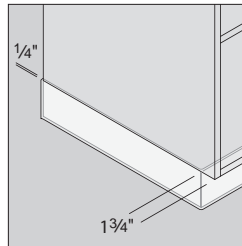
Opus

Additional door and drawer pull options are available. Optional pulls include:

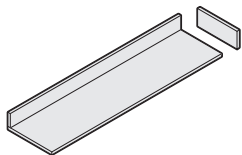
- Contemporary
- Jazz
- Opus



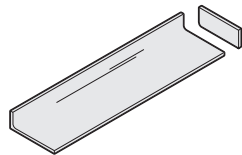
Lock is optional and factory- or field-installed to secure the doors or top drawer of the cabinet. Factory-installed locks are available keyed random only. Optional field-installed locks are available with consecutive, specific, or random keying options. Master-keyed locks are also available. Field-installed lock cylinders must be specified separately. ▶ Lock and Keying, Page 716



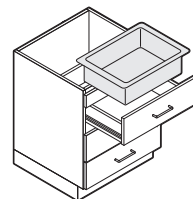
Cove molding must be field installed on base to complete installation. The front base of cabinet is recessed 1 3/4". The sides and back are set in 1/4" to allow cove molding to fit flush. Cove molding must be supplied locally.



Laminate worksurface, ordered separately, is available with High-Pressure Laminate or custom laminate. High-Pressure Laminate has a matching 3 mm plastic front edge and 1 mm plastic edge on sides and back. Backsplash is standard with the worksurface. Laminate sidesplash is also available and must be ordered separately. ▶ Pages 216-219

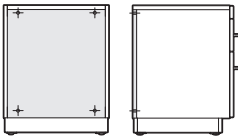


Solid surface worksurface, ordered separately, has an integrated back-splash. A solid surface sidesplash is also available and must be ordered separately.



Plastic drawer liner is available to place in any drawer of base cabinet to allow for ease of cleaning. They must be ordered separately.

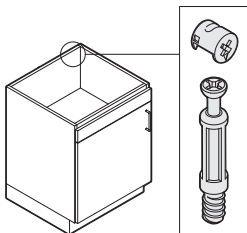
Connections



Base cabinets must always be fastened to a wall. Attachment hardware is included with cabinets.



Filler closes the gap between a cabinet and a structural wall. Additional length worksurface will be required. Field cutting of filler and worksurface may be required to achieve architectural fit.
▶ Page 222



Cam-lock assembly hardware is used.

Surface Materials

Cabinet, drawer front, door front, and shelf

- Melamine

Edges

- Matching plastic

Drawer sides

- White paint only

D pulls, contemporary, and jazz pulls

- Nickel

Opus pulls

- Champagne

Euro and five-knuckle hinges

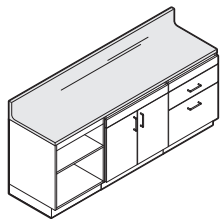
- Nickel

Face lock

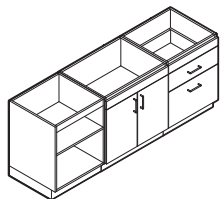
- 9201 Polished Chrome only

Shipping

All cabinets ship fully assembled.



Worksurface is available to connect to one cabinet or to span multiple cabinets. It fastens to the top of cabinet with brackets and is field-installed. Brackets are included as standard with base cabinets.



Bolts are used to align adjacent cabinets in a multi-unit configuration. The bolts can be removed and reinstalled if a different multi-unit configuration is desired.
Tip: Side of cabinet will be defaced by bolts. Exposed bolt holes will require field fix.

Folio

36"H Base Cabinets

36"H base cabinets provide a standing-height modular solution to meet storage needs in clinical settings. Base cabinets connect to a worksurface to create a single unit or a multicabinet wall unit.

Top of cabinet is open and requires attachment to a worksurface that is ordered separately.

Adjustable shelf is standard inside the cabinet. Shelves adjust in 1/4" increments. Additional shelves are available. They must be specified separately.

Back is finished.

Base elevates the cabinet and is 3/4"H with the glide in the lowest position.

Sides are finished so the cabinet can stand alone or be used in right- or left-hand positions.

Shelf is adjustable and removable.

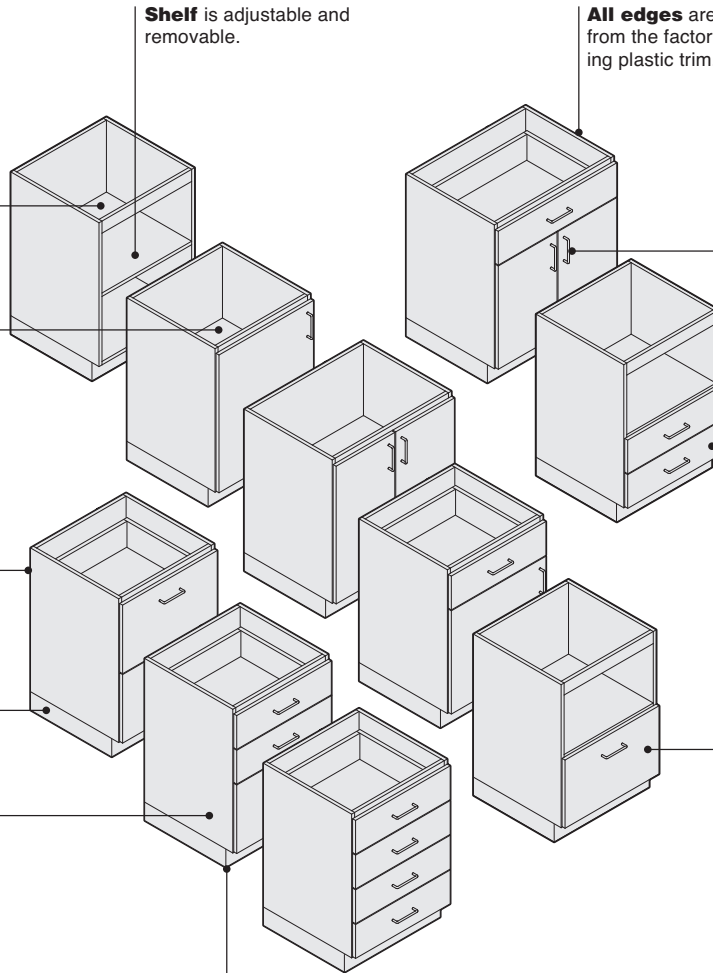
All edges are finished from the factory with matching plastic trim.

D pulls are standard on doors and drawers and are nickel only. Additional pull styles are available as an option.

Small drawers have single-wall steel sides, and three quarter extension slides. Drawer configurations are available to accommodate supplies and equipment.
Tip: 36"W small drawers have full extension, heavy-duty slides to handle the additional load.

Large drawers and 36"W small drawers have single-wall steel sides and full extension, heavy-duty slides to handle the additional load.

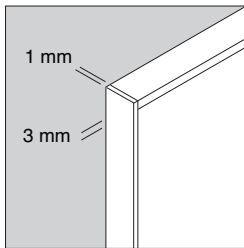
Adjustable glides adjust for installation on uneven floors. Adjustability range is 1 1/2".



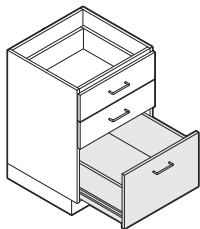
Actual Dimensions

Features	Overall Depth	Width	Height without Worksurface	Height with Laminate Worksurface	Height with Solid Worksurface
With open shelves	24"	12", 18", 21", 24", 30", or 36"	35"	36 ³ / ₁₆ "	36"
With single door	24"	12", 18", 21", or 24"	35"	36 ³ / ₁₆ "	36"
With double doors	24"	30" or 36"	35"	36 ³ / ₁₆ "	36"
With drawers	24"	12", 18", 21", 24", 30", or 36"	35"	36 ³ / ₁₆ "	36"

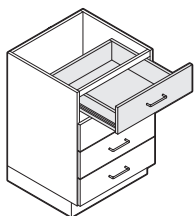
Product Details



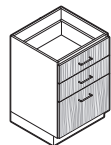
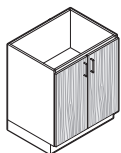
Edges on cabinets are matching 1 mm plastic trim. Drawer and door edges are matching 3 mm plastic trim.



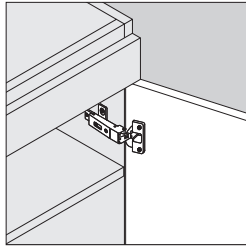
Large drawers and 36"W small drawers, when opened, extend their full depth.



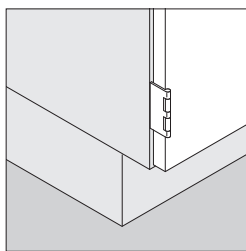
Small drawers with the exception of 36"W small drawers, when opened, extend three quarters of their depth.



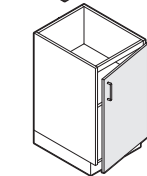
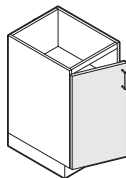
Woodgrain laminate matches on all door and drawer sets on base cabinets.



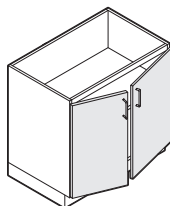
Euro hinge is standard on cabinet door and allows the door to open a full 110°.



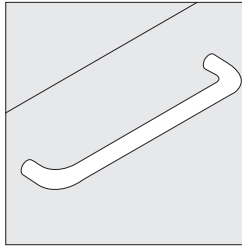
Five-knuckle hinge is optional and allows the door to open 270° or 180° if connected to adjacent cabinet.



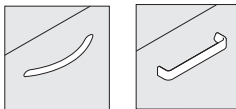
Single-door cabinets are hinged on the left or right side. A left-hand unit has the hinge on the left side of the door. A right-hand unit has the hinge on the right side of the door.



Double-door cabinets open from the center out.



D pulls are standard.



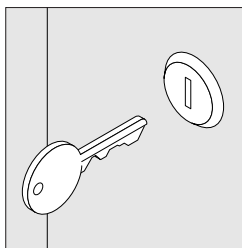
Contemporary Jazz



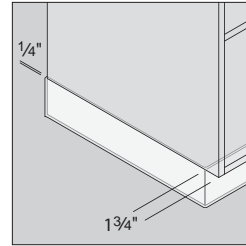
Opus

Additional door and drawer pull options are available. Optional pulls include:

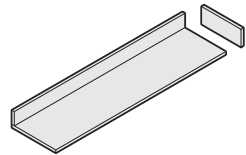
- Contemporary
- Jazz
- Opus



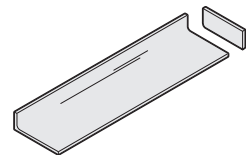
Lock is optional and factory- or field-installed to secure the doors or top drawer of the cabinet. Factory-installed locks are available keyed random only. Optional field-installed locks are available with consecutive, specific, or random keying options. Master-keyed locks are also available. Field-installed lock cylinders must be specified separately.
▶ Lock and Keying, Page 716



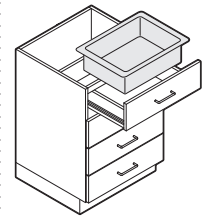
Cove molding must be field installed on base to complete installation. The front base of cabinet is recessed 1 3/4". The sides and back are set in 1/4" to allow cove molding to fit flush. Cove molding must be supplied locally.



Laminate worksurface, ordered separately, is available with High-Pressure Laminate or custom laminate. High-Pressure Laminate has a matching 3 mm plastic front edge and 1 mm plastic edge on sides and back. Backsplash is standard with the worksurface. Laminate sidesplash is also available and must be ordered separately.
▶ Pages 216-219

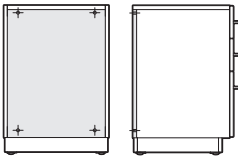


Solid surface worksurface, ordered separately, has an integrated backsplash. A solid surface sidesplash is also available and must be ordered separately.



Plastic drawer liner is available to place in any drawer of base cabinet to allow for ease of cleaning. They must be ordered separately.

Connections

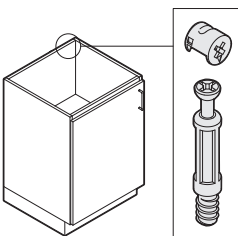


Base cabinets must always be fastened to a wall. Attachment hardware is included with cabinets.



Filler closes the gap between a cabinet and a structural wall. Additional length worksurface will be required. Field cutting of filler and worksurface may be required to achieve architectural fit.

▶ Page 222



Cam-lock assembly hardware is used.

Surface Materials

Cabinet, drawer front, door front, and shelf

- Melamine

Edges

- Matching plastic

Drawer sides

- White paint only

D pulls, contemporary, and jazz pulls

- Nickel

Opus pulls

- Champagne

Euro and five-knuckle hinges

- Nickel

Face lock

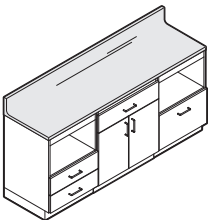
- 9201 Polished Chrome only

Filler

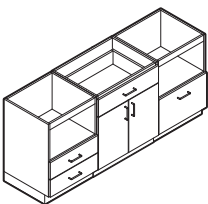
- Melamine

Shipping

All cabinets ship fully assembled.



Worksurface is available to connect to one cabinet or to span multiple cabinets. It fastens to the top of cabinet with brackets and is field-installed. Brackets are included as standard with base cabinets.



Bolts are used to align adjacent cabinets in a multi-unit configuration. The bolts can be removed and reinstalled if a different multi-unit configuration is desired.

Tip: Side of cabinet will be defaced by bolts. Exposed bolt holes will require field fix.

Folio Sink Cabinets

Sink cabinet accommodates a sink, which is independently purchased and field installed. Cabinets are available with a removable angled front or with doors.

Angled front panel can be removed without tools for easy access to plumbing and allows toe space.

Back of sink cabinet with angled front is open to access plumbing.

All edges are finished from the factory with matching plastic trim.

Top of cabinet is open and requires attachment to a worksurface that is ordered separately.

Back of sink cabinet with single door or double doors is closed.

Sides of cabinet are finished so the cabinet can be used as a single unit or be used in right- or left-hand positions.

Adjustable glides adjust for installation on uneven floors. Adjustability range is 1 1/2".

Sink cabinet front panel is fixed.

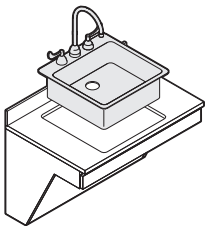
D pulls are standard on sink units with doors and are nickel only. Additional pull styles are available as an option.

Actual Dimensions

Features	Overall Depth	Width	Inside Depth	Width	Height	Height without Worksurface	Height with Laminate Worksurface	Height with Solid Worksurface
33"H ADA Sink Cabinet with angled front	24"	36"	20"	32"	4 ² / ₅ "	32"	33 ³ / ₁₆ "	33"
36"H Sink Cabinet with angled front	24"	36"	20"	32"	7 ² / ₅ "	35"	36 ³ / ₁₆ "	36"
36"H Sink Cabinet with single door	24"	24"	21"	20"	N.A.	35"	36 ³ / ₁₆ "	36"
36"H Sink Cabinet with double doors	24"	30" or 36"	21"	26" or 32"	N.A.	35"	36 ³ / ₁₆ "	36"

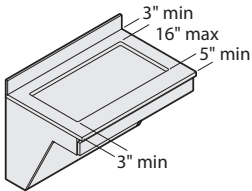
Product Details

ADA sink cabinets meet ADA guidelines.

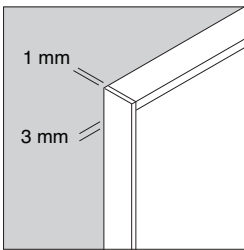


Sink must be independently purchased and field installed. Sink cutout must be cut in field.

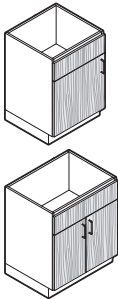
Tip: Sink for ADA cabinet must meet ADA guidelines. Check with sink manufacturer.



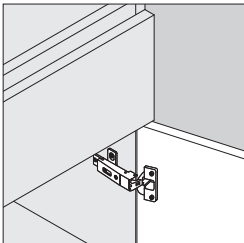
Maximum sink cutout size is 16" front to back. Minimum cutout requirements are 5" from front edge and 3" from back and side edges.



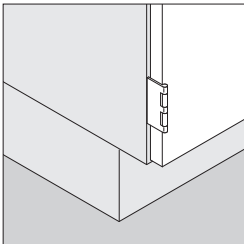
Edge, on cabinets are matching 1 mm plastic trim. Door edges are matching 3 mm plastic trim.



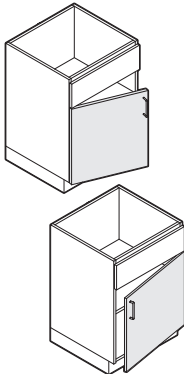
Woodgrain laminate matches on all drawer and door sets on base cabinets.



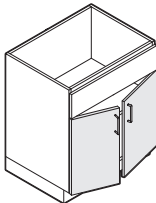
Euro hinge is standard on cabinet door and allows the door to open a full 110°.



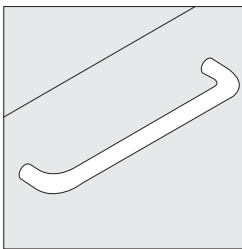
Five-knuckle hinge is optional and allows the door to open 270° or 180° if connected to adjacent cabinet.



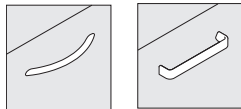
Single-door cabinets are hinged on the left or right side. A left-hand unit has the hinge on the left side of the door. A right-hand unit has the hinge on the right side of the door.



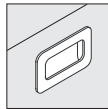
Double-door cabinets open from the center out.



D pulls are standard.



Contemporary Jazz

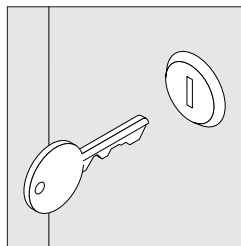


Opus

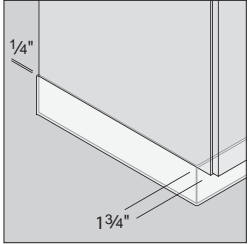
Additional door pull options are available.

Optional pulls include:

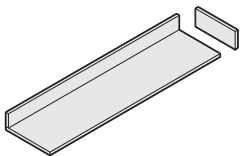
- Contemporary
- Jazz
- Opus



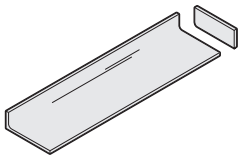
Lock is optional and factory- or field-installed to secure the doors. Factory-installed locks are available keyed random only. Optional field-installed locks are available with consecutive, specific, or random keying options. Master-keyed locks are also available. Field-installed lock cylinders must be specified separately.
▶ Lock and Keying, Page 716



Cove molding must be field installed on base to complete installation. The front base of cabinet is recessed 1 3/4". The sides and back are set in 1/4" to allow cove molding to fit flush. Cove molding must be supplied locally. Sink cabinets with angled fronts do not extend fully to the floor and do not require cove molding.



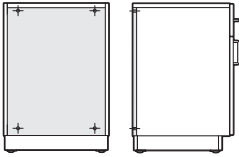
Laminate worksurface, ordered separately, is available with High-Pressure Laminate or custom laminate. High-Pressure Laminate has a matching 3 mm plastic front edge and 1 mm plastic edge on sides and back. Backsplash is standard with the worksurface. Laminate sidesplash is also available and must be ordered separately.
▶ Page 216-219



Solid surface worksurface, ordered separately, has an integrated backsplash. A solid surface sidesplash is also available and must be ordered separately.

Integrated solid sink bowl is available. Use engineering quote to specify location.

Connections

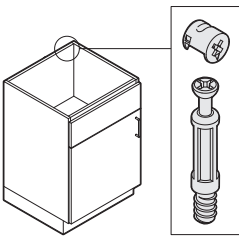


Base cabinets must always be fastened to a wall. Attachment hardware is included with cabinets.



Filler closes the gap between a cabinet and a structural wall. Additional length worksurface will be required. Field cutting of filler and worksurface may be required to achieve architectural fit.

▶ Page 222



Cam-lock assembly hardware is used.

Surface Materials

Sink cabinet and door fronts

- Melamine

Edges

- Matching plastic

D pulls, contemporary, and jazz pulls

- Nickel

Opus pulls

- Champagne

Euro and five-knuckle hinges

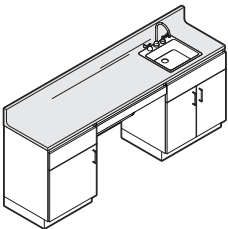
- Nickel

Face lock

- 9201 Polished Chrome only

Filler

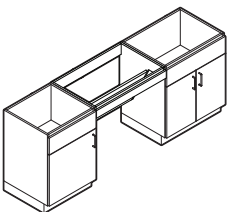
- Melamine



Worksurface is available to connect to one cabinet or to span multiple cabinets. It fastens to the top of cabinet with brackets and is field-installed. Brackets are included as standard with base cabinets.

Shipping

All cabinets ship fully assembled.



Bolts are used to align adjacent cabinets in a multi-unit configuration. The bolts can be removed and reinstalled if a different multi-unit configuration is desired.

Tip: Side of cabinet will be defaced by bolts. Exposed bolt holes will require field fix.

Folio Storage Cabinets

Storage cabinets

include open shelf and closed cabinet storage configurations for clinical settings. Storage cabinets are available in 84"H with flat top and 92"H with sloped top.

Top is finished.

Back is finished.

Sides are finished.

Five shelves are standard inside the storage cabinet. One shelf is fixed at 36"H and all other shelves are adjustable. Shelves adjust in 1¼" increments. Additional shelves are available and must be specified separately.

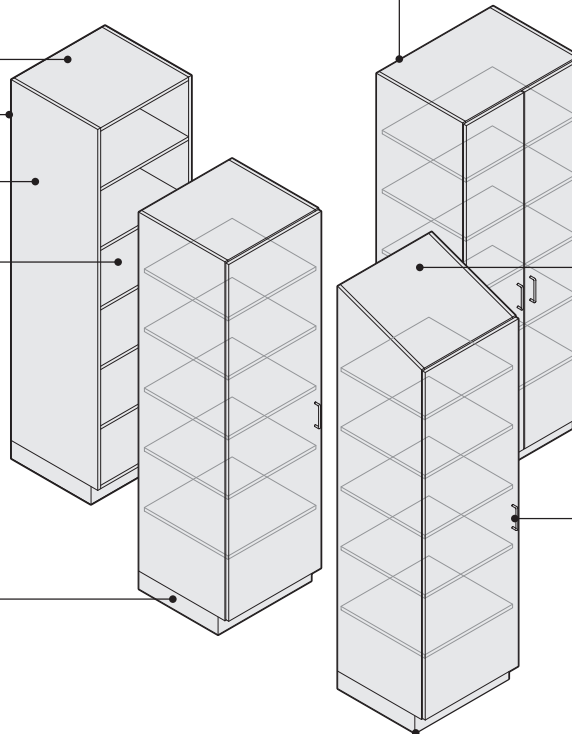
Base elevates the cabinet and is 3¾"H with the glide in the lowest position.

All edges are finished from the factory with matching plastic trim.

Sloped top style cabinets are available to comply with certain local codes. Check local codes for specific requirements.

D pulls are standard on doors and are nickel only. Additional pull styles are available as an option.

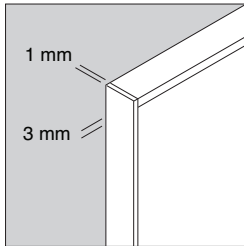
Adjustable glides adjust for installation on uneven floors. Adjustability range is 1½".



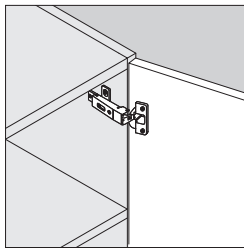
Actual Dimensions

Features	Overall Depth	Width	Height without Worksurface
Flat top with open shelves	24"	12", 18", 21", 24", 30", or 36"	84"
Flat top with single door	24"	12", 18", 21", or 24"	84"
Flat top with double doors	24"	30" or 36"	84"
Sloped top with open shelves	24"	12", 18", 21", 24", 30", or 36"	92"
Sloped top with single door	24"	12", 18", 21", or 24"	92"
Sloped top with double doors	24"	30" or 36"	92"

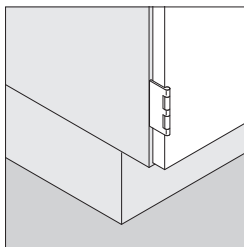
Product Details



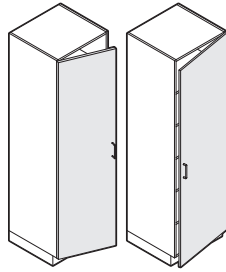
Edges on cabinets are matching 1 mm plastic trim. Drawer and door edges are matching 3 mm plastic trim.



Euro hinge is standard on cabinet door and allows the door to open a full 110°.



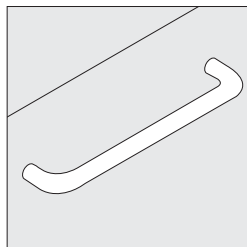
Five-knuckle hinge is optional and allows the door to open 270° or 180° if connected to adjacent cabinet



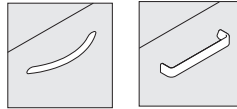
Single-door cabinets are hinged on the left or right side. A left-hand unit has the hinge on the left side of the door. A right-hand unit has the hinge on the right side of the door.



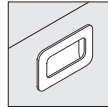
Double-door cabinets open from the center out.



D pulls are standard.



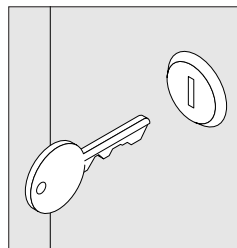
Contemporary Jazz



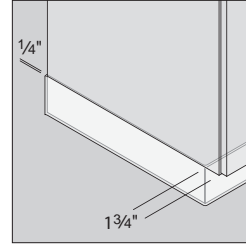
Opus

Additional door pull options are available. Optional pulls include:

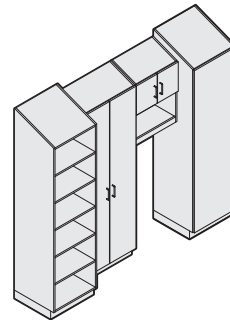
- Contemporary
- Jazz
- Opus



Lock is optional and factory- or field-installed to secure the doors. Factory-installed locks are available keyed random only. Optional field-installed locks are available with consecutive, specific, or random keying options. Master-keyed locks are also available. Field-installed lock cylinders must be specified separately.
▶ Lock and Keying, Page 716

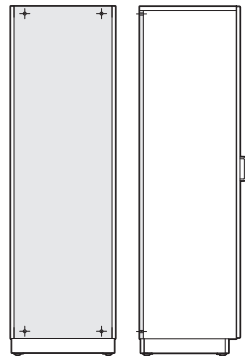


Cove molding must be field installed on base to complete installation. The front base of cabinet is recessed 1 3/4". The sides and back are set in 1/4" to allow cove molding to fit flush. Cove molding must be supplied locally.

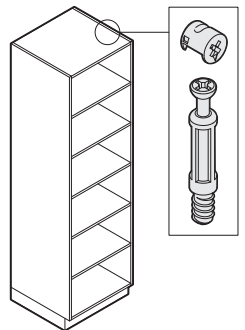


Sloped tops on storage, wardrobe, bookcase, and upper storage cabinets have a 20° slope. The height of a 24"D storage or wardrobe cabinet with a slope top is 92"H. The height of a 14"D bookcase cabinet with a sloped top or a 14"D wall-mounted upper storage cabinet with a sloped top is 89"H. The difference in heights is to allow the door fronts to align on adjacent cabinets of different depths. Storage and wardrobe cabinets are 24"D and bookcase and upper storage cabinets are 14"D. When placing a bookcase or upper storage cabinets with sloped top next to a storage or wardrobe cabinet with a sloped top, a step-down in height of 3" will result, but doors on all units will align.

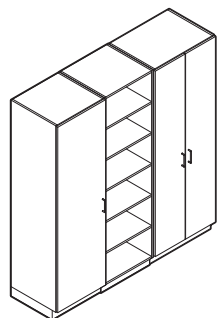
Connections



Storage cabinets must always be fastened to a wall. Attachment hardware is included with cabinets.



Cam-lock assembly hardware is used.



Bolts are used to align adjacent cabinets in a multi-unit configuration. The bolts can be removed and reinstalled if a different multi-unit configuration is desired.
Tip: Side of cabinet will be defaced by bolts. Exposed bolt holes will require field fix.

Surface Materials

Cabinet, door front, and shelf

- Melamine

Edges

- Matching plastic

D pulls, contemporary, and jazz pulls

- Nickel

Opus pulls

- Champagne

Euro and five-knuckle hinges

- Nickel

Face lock

- 9201 Polished Chrome only

Shipping

All cabinets ship fully assembled.

Folio Wardrobe Cabinets

Wardrobe cabinets offer coat and other storage for a clinical setting. Wardrobe cabinets are available in 84"H with flat top and 92"H with sloped top.

Top is finished.

Back is finished.

Sides are finished.

Sloped top style cabinets are available to comply with certain local codes. Check local codes for specific requirements.

Hanger bar runs the width of the cabinet.

Base elevates the cabinet and is 3³/₄"H with the glide in the lowest position.

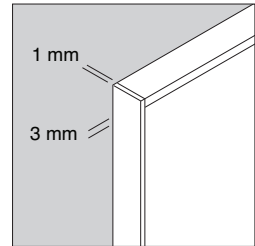
Adjustable glides adjust for installation on uneven floors. Adjustability range is 1¹/₂".

All edges are finished from the factory with matching plastic trim.

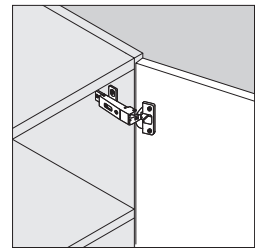
Shelf is fixed at 64¹/₄"H.

D pulls are standard on doors and are nickel only. Additional pull styles are available as an option.

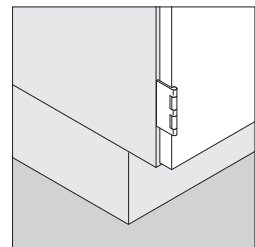
Product Details



Edges on cabinets are matching 1 mm plastic trim. Drawer and door edges are matching 3 mm plastic trim.



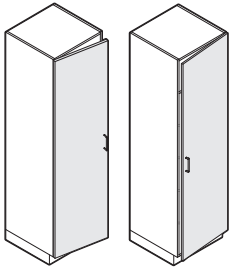
Euro hinge is standard on cabinet door and allows the door to open a full 110°.



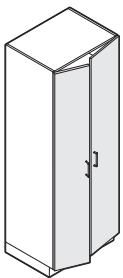
Five-knuckle hinge is optional and allows the door to open 270° or 180° if connected to adjacent cabinet.

Actual Dimensions

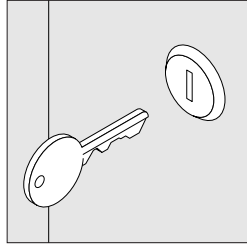
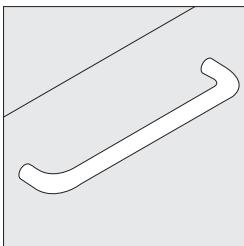
Features	Overall Depth	Width	Height
Flat top with single door	24"	12", 18", 21", or 24"	84"
Flat top with double doors	24"	30" or 36"	84"
Sloped top with single door	24"	12", 18", 21", or 24"	92"
Sloped top with double doors	24"	30" or 36"	92"



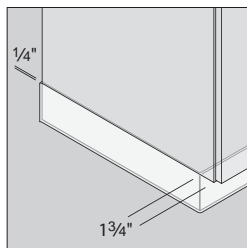
Single-door cabinets are hinged on the left or right side. A left-hand unit has the hinge on the left side of the door. A right-hand unit has the hinge on the right side of the door.



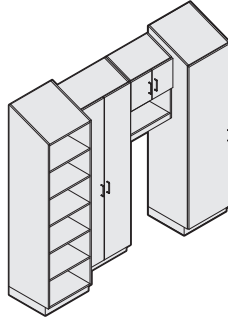
Double-door cabinets open from the center out.



Lock is optional and factory- or field-installed to secure the doors. Factory-installed locks are available keyed random only. Optional field-installed locks are available with consecutive, specific, or random keying options. Master-keyed locks are also available. Field-installed lock cylinders must be specified separately.
▶ Lock and Keying, Page 716

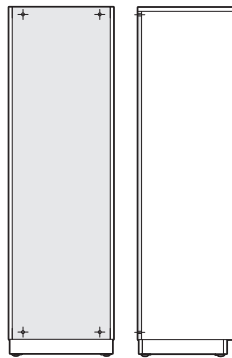


Cove molding must be field installed on base to complete installation. The front base of cabinet is recessed 1 3/4". The sides and back are set in 1/4" to allow cove molding to fit flush. Cove molding must be supplied locally.

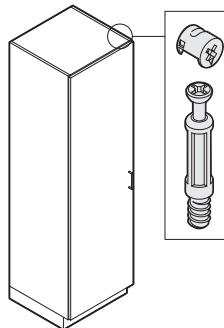


Sloped tops on storage, wardrobe, bookcase, and upper storage cabinets have a 20° slope. The height of a 24"D storage or wardrobe cabinet with a sloped top is 92"H. The height of a 14"D bookcase cabinet with a sloped top or a 14"D wall-mounted upper storage cabinet with a sloped top is 89"H. The difference in heights is to allow the door fronts to align on adjacent cabinets of different depths. Storage and wardrobe cabinets are 24"D and bookcase and upper storage cabinets are 14"D. When placing a bookcase or upper storage cabinets with sloped top next to a storage or wardrobe cabinet with a sloped top, a step-down in height of 3" will result, but doors on all units will align.

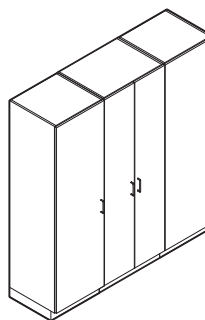
Connections



Wardrobe cabinets must always be fastened to a wall. Attachment hardware is included with cabinets.



Cam-lock assembly hardware is used.



Bolts are used to align adjacent cabinets in a multi-unit configuration. The bolts can be removed and reinstalled if a different multi-unit configuration is desired.
Tip: Side of cabinet will be defaced by bolts. Exposed bolt holes will require field fix.

Surface Materials

Cabinet, door front, and shelf

- Melamine

Edges

- Matching plastic

D pulls, contemporary, and jazz pulls

- Nickel

Opus pulls

- Champagne

Euro and five-knuckle hinges

- Nickel

Hanger bar

- Black

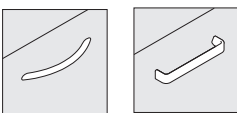
Face lock

- 9201 Polished Chrome only

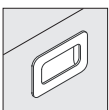
Shipping

All cabinets ship fully assembled.

D pulls are standard.



Contemporary Jazz



Opus

Additional door pull options are available.

Optional pulls include:

- Contemporary
- Jazz
- Opus

Folio Bookcases

Bookcases offer convenient storage for binders, books, and other objects used in a clinical setting. Bookcases are available in 84"H with flat top and 89"H with sloped top.

Top is finished.

Back is finished.

Sides are finished.

Five shelves are standard in the bookcase. One shelf is fixed at 36"H and all other shelves are adjustable. Shelves adjust in 1 1/4" increments. Additional shelves are available and must be specified separately.

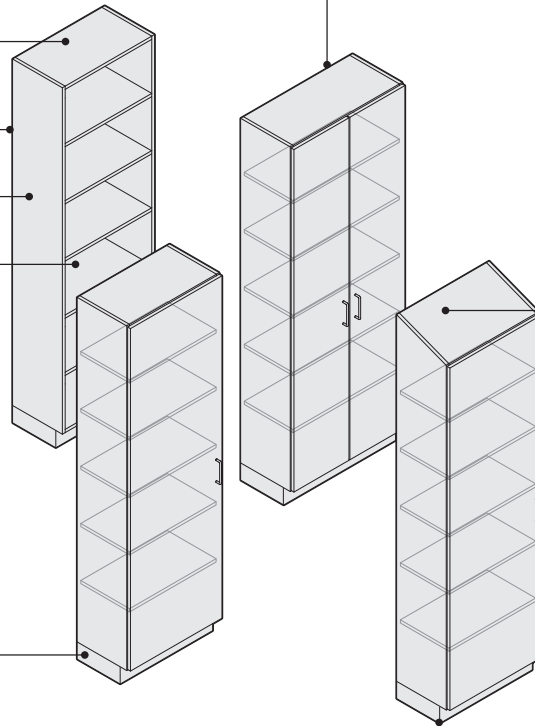
Base elevates the bookcase and is 3 3/4"H with the glide in the lowest position.

All edges are finished from the factory with matching plastic trim.

Sloped top style cabinets are available to comply with certain local codes. Check local codes for specific requirements.

D pulls are standard on doors and are nickel only. Additional pull styles are available as an option.

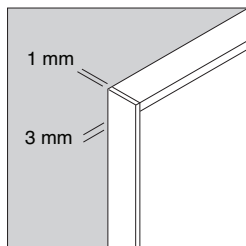
Adjustable glides adjust for installation on uneven floors. Adjustability range is 1 1/2".



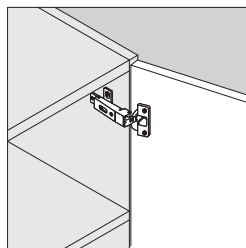
Actual Dimensions

Features	Overall Depth	Width	Height
Flat top with open shelves	14"	12", 18", 21", 24", 30", or 36"	84"
Flat top with single door	14"	12", 18", 21", or 24"	84"
Flat top with double doors	14"	30" or 36"	84"
Sloped top with open shelves	14"	12", 18", 21", 24", 30", or 36"	89"
Sloped top with single door	14"	12", 18", 21", or 24"	89"
Sloped top with double doors	14"	30" or 36"	89"

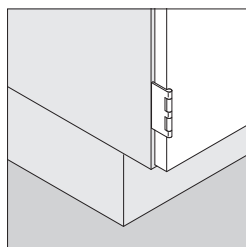
Product Details



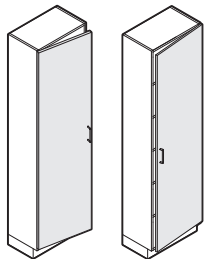
Edges on cabinets are matching 1 mm plastic trim. Drawer and door edges are matching 3 mm plastic trim.



Euro hinge is standard on cabinet door and allows the door to open a full 110°.



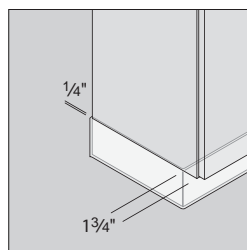
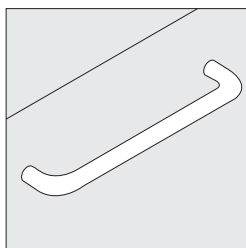
Five-knuckle hinge is optional and allows the door to open 270° or 180° if connected to adjacent cabinet.



Single-door cabinets are hinged on the left or right side. A left-hand unit has the hinge on the left side of the door. A right-hand unit has the hinge on the right side of the door.

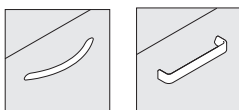


Double-door cabinets open from the center out.

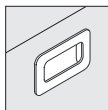


Cove molding must be field installed on base to complete installation. The front base of cabinet is recessed 1 3/4". The sides and back are set in 1/4" to allow cove molding to fit flush. Cove molding must be supplied locally.

D pulls are standard.



Contemporary Jazz

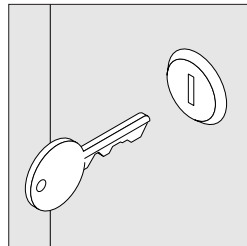


Opus

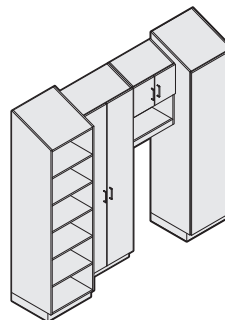
Additional door pull options are available.

Optional pulls include:

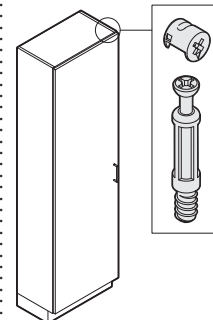
- Contemporary
- Jazz
- Opus



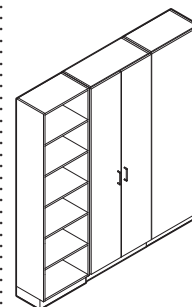
Lock is optional and factory- or field-installed to secure the doors. Factory-installed locks are available keyed random only. Optional field-installed locks are available with consecutive, specific, or random keying options. Master-keyed locks are also available. Field-installed lock cylinders must be specified separately.
▶ Lock and Keying, Page 716



Sloped tops on storage, wardrobe, bookcase, and upper storage cabinets have a 20° slope. The height of a 24"D storage or wardrobe cabinet with a sloped top is 92"H. The height of a 14"D bookcase cabinet with a sloped top or a 14"D wall-mounted upper storage cabinet with a sloped top is 89"H. The difference in heights is to allow the door fronts to align on adjacent cabinets of different depths. Storage and wardrobe cabinets are 24"D and bookcase and upper storage cabinets are 14"D. When placing a bookcase or upper storage cabinets with a sloped top next to a storage or wardrobe cabinet with a sloped top, a step-down in height of 3" will result, but doors on all units will align.

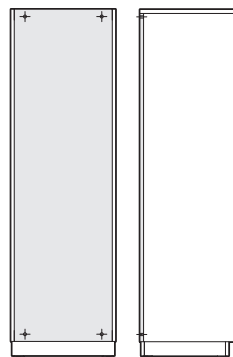


Cam-lock assembly hardware is used.



Bolts are used to align adjacent cabinets in a multi-unit configuration. The bolts can be removed and reinstalled if a different multi-unit configuration is desired. *Tip: Side of cabinet will be defaced by bolts. Exposed bolt holes will require field fix.*

Connections



Bookcase cabinets must always be fastened to a wall. Attachment hardware is included with cabinets.

Surface Materials

Cabinet, door front, and shelf

- Melamine

Edges

- Matching plastic

D pulls, contemporary, and jazz pulls

- Nickel

Opus pulls

- Champagne

Euro and five-knuckle hinges

- Nickel

Face lock

- 9201 Polished Chrome only

Shipping

All cabinets ship fully assembled.

Folio Upper Storage Cabinets

Upper storage cabinets address storage needs above a worksurface. They are available in open shelf, closed cabinet, and combination open shelf with closed cabinet models. They are available with a flat top or sloped top.

Sloped top style cabinets are available to comply with certain local codes. Check local codes for specific requirements.

Top is finished.

Back is finished.

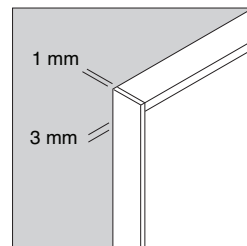
Shelf is adjustable and removable. Shelves adjust in 1 1/4" increments. Additional shelves are available and must be specified separately.

Sides are finished.

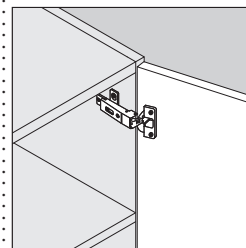
All edges are finished from the factory with matching plastic trim.

D pulls are standard on doors and are nickel only. Additional pull styles are available as an option.

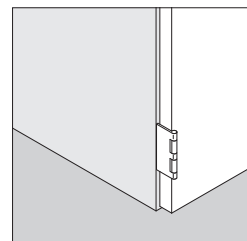
Product Details



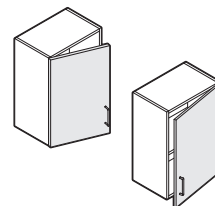
Edges on cabinets are matching 1 mm plastic trim. Door edges are matching 3 mm plastic trim.



Euro hinge is standard on cabinet door and allows the door to open a full 110°.



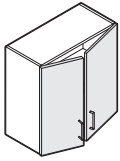
Five-knuckle hinge is optional and allows the door to open 270° or 180° if connected to adjacent cabinet.



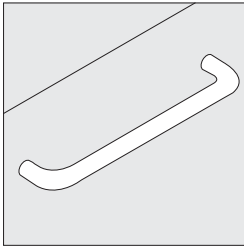
Single-door cabinets are hinged on the left or right side. A left-hand unit has the hinge on the left side of the door. A right-hand unit has the hinge on the right side of the door.

Actual Dimensions

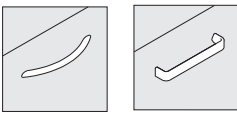
Features	Overall Depth	Width	Height
Flat top with open shelves	14"	12", 18", 21", 24", 30", or 36"	24" or 30"
Flat top with single door	14"	12", 18", or 21"	24" or 30"
Flat top with double doors	14"	24", 30", or 36"	24" or 30"
Flat top with single door and open shelf	14"	12", 18", or 21"	30"
Flat top with double doors and open shelf	14"	24", 30", or 36"	30"
Sloped top with open shelves	14"	12", 18", 21", 24", 30", or 36"	28 7/8" or 34 7/8"
Sloped top with single door	14"	12", 18", or 21"	28 7/8" or 34 7/8"
Sloped top with double doors	14"	24", 30", or 36"	28 7/8" or 34 7/8"
Sloped top with single door and open shelf	14"	12", 18", or 21"	34 7/8"
Sloped top with double doors and open shelf	14"	24", 30", or 36"	34 7/8"



Double-door cabinets open from the center out.



D pulls are standard.



Contemporary Jazz

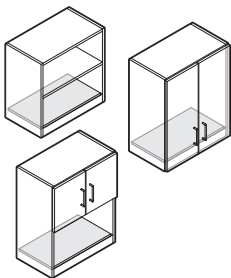


Opus

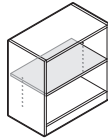
Additional door pull options are available.

Optional pulls include:

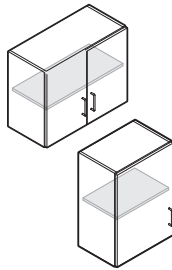
- Contemporary
- Jazz
- Opus



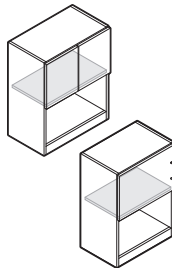
Bottom shelf is fixed on all upper storage cabinets.



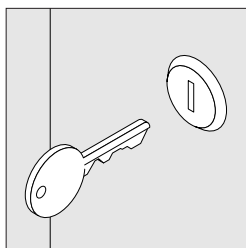
Open shelf is adjustable.



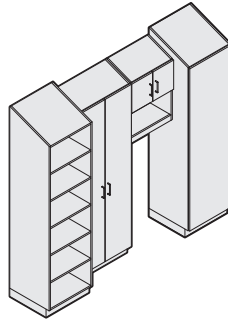
Shelf behind full door is adjustable and removable.



Shelf on upper storage cabinet with single or double door and open shelf is fixed.

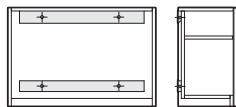


Lock is optional and factory- or field-installed to secure the doors of the cabinet. Factory-installed locks are available keyed random only. Optional field-installed locks are available with consecutive, specific, or random keying options. Master-keyed locks are also available. Field-installed lock cylinders must be specified separately. ▶ Lock and Keying, Page 716.

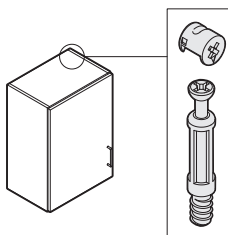


Sloped tops on storage, wardrobe, bookcase, and upper storage cabinets have a 20° slope. The height of a 24"D storage or wardrobe cabinet with a sloped top is 92"H. The height of a 14"D bookcase cabinet with a sloped top or a 14"D wall-mounted upper storage cabinet with a sloped top is 89"H. The difference in heights is to allow the door fronts to align on adjacent cabinets of different depths. Storage and wardrobe cabinets are 24"D and bookcase and upper storage cabinets are 14"D. When placing a bookcase or upper storage cabinets with sloped top next to a storage or wardrobe cabinet with a sloped top, a step-down in height of 3" will result, but doors on all units will align.

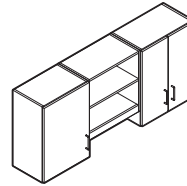
Connections



Cabinets must always be fastened to wall. It is recommended that upper storage cabinet be mounted to a wall stud. Mounting cleats and attachment hardware are included with upper storage cabinets.



Cam-lock assembly hardware is used.



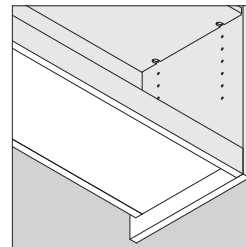
Bolts are used to align adjacent cabinets in a multi-unit configuration. The bolts can be removed and reinstalled if a different multi-unit configuration is desired.

Tip: Side of cabinet will be defaced by bolts. Exposed bolt holes will require field fix.



Filler closes the gap between an upper storage cabinet and a structural wall.

Wiring & Cabling



Recessed area under the cabinet provides space for task lighting that is ordered separately.

The recessed area actual dimensions are:

Cabinet Width	Recessed Area		Height
	Depth	Width	
12"	11 ⁷ / ₈ "	10 ¹ / ₂ "	1 ¹³ / ₁₆ "
18"	11 ⁷ / ₈ "	16 ¹ / ₂ "	1 ¹³ / ₁₆ "
21"	11 ⁷ / ₈ "	19 ¹ / ₂ "	1 ¹³ / ₁₆ "
24"	11 ⁷ / ₈ "	22 ¹ / ₂ "	1 ¹³ / ₁₆ "
30"	11 ⁷ / ₈ "	28 ¹ / ₂ "	1 ¹³ / ₁₆ "
36"	11 ⁷ / ₈ "	34 ¹ / ₂ "	1 ¹³ / ₁₆ "

Surface Materials

Cabinet, door front, and shelf

- Melamine

Edges

- Matching plastic

D pulls, contemporary, and jazz pulls

- Nickel

Opus pulls

- Champagne

Euro and five-knuckle hinges

- Nickel

Face lock

- 9201 Polished Chrome only

Shipping

All cabinets ship fully assembled.

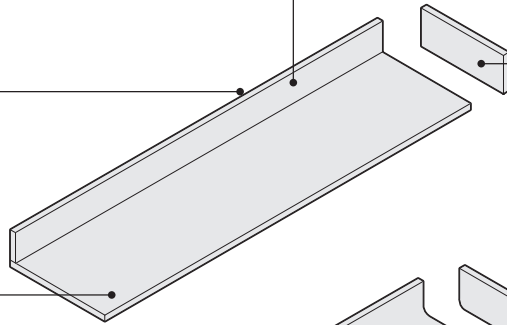
Folio Worksurfaces

Worksurfaces attach to the top of base or sink cabinets. They provide a writing or display surface.

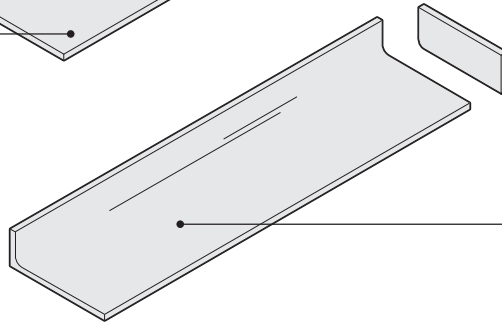
Backsplash is standard with each worksurface. Laminate backsplash must be field installed. Solid surface has integrated backsplash.

Edges on laminate worksurface are finished with 3 mm trim on front and 1 mm plastic trim on sides and back. Laminate sidesplash has 1 mm matching plastic trim all around.

Laminate worksurface and backsplash have a particle board core with a High-Pressure Laminate surface.



Sidesplash in laminate or solid surface is available. Laminate sidesplash is non-handed. Solid surface sidesplash is available right- or left-handed. Sidesplashes must be ordered separately.

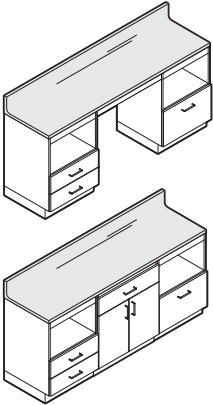


Solid surface worksurface with integrated backsplash is available.

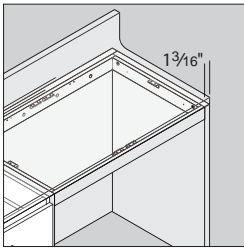
Actual Dimensions

Features	Overall Depth	Width	Height
Laminate worksurfaces	24"	12", 18", 21", 24", 27", 30", 33", 36", 39", 42", 45", 48", 51", 54", 60", 66", 72", 78", 84", 90", 96", 102", 108", 114", or 120"	1 ³ / ₁₆ "
Laminate sidesplash	21"	1 ³ / ₁₆ "	4"
Solid surface sidesplash	21"	1/2"	4"
Solid worksurfaces	24"	12", 18", 21", 24", 27", 30", 33", 36", 39", 42", 45", 48", 51", 54", 60", 66", 72", 78", 84", 90", 96", 102", 108", 114", or 120"	1"

Product Details

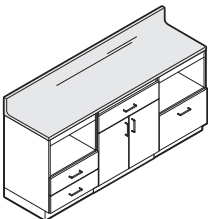


Worksurface can attach to the top of one base cabinet or desk frame, or it can span multiple storage cabinets to create a wall unit.



Extended worksurface option is available and adds 1³/₁₆" length to the worksurface for attachment to one support end panel. Support end panel must be ordered separately.
Tip: 12"W, 18"W, 21"W, and 120"W worksurfaces are not available with the extended worksurface option.

Connections



Brackets are used to attach the worksurface to the base cabinet in the field. Brackets are included as standard with base cabinets.

Surface Materials

Worksurface, back-splash, and sidesplash

- High-Pressure Laminate
- Solid surface

Tip: Graded-In solid surfaces are available.

▶ See *Surface Materials* section for complete listing.

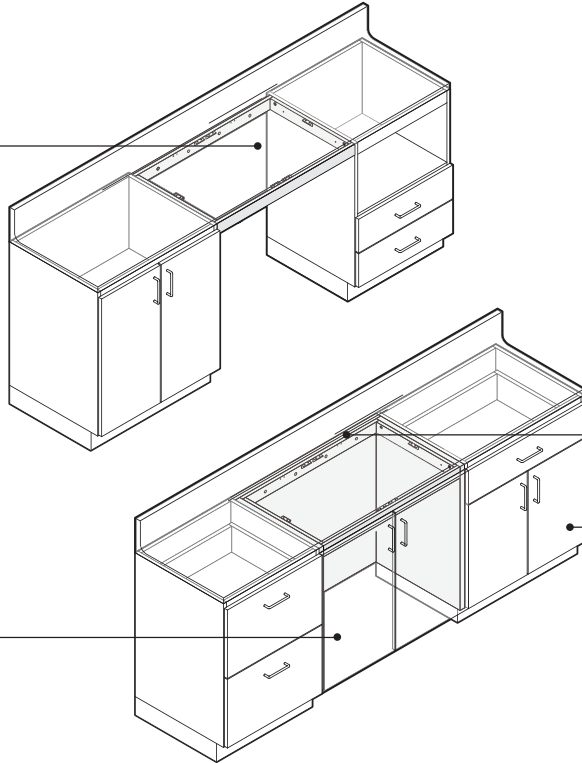
Edges

- Plastic on laminate worksurface
- Self edge (option on custom laminate worksurfaces only)

Folio Desk Frames

Desk frames attach under a worksurface and to an adjacent base or sink cabinet or structural wall to create a desk or garage configuration to store carts or other items.

Worksurface must be attached to a desk frame. Specify worksurface separately.



Desk frames are available with or without a back panel.

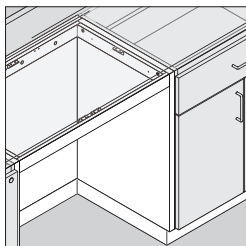
Base or sink cabinet or structural wall must be attached to one or both sides of a desk frame.

Doors are optional on desk frames with back panels to create a garage application.

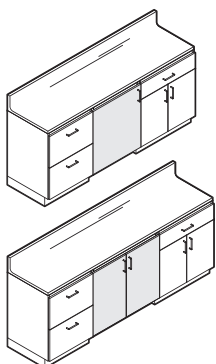
Actual Dimensions

	Without Back Panel	With Back Panel
Depth	22 ¹ / ₈ "	22 ¹ / ₈ "
Width	12", 18", 24", 30", 36", 42", 48", 54", 60", or 72"	24", 30", or 36"
Height	25 ⁵ / ₈ "	35"

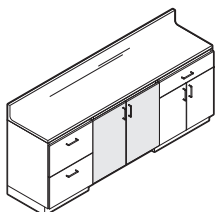
Product Details



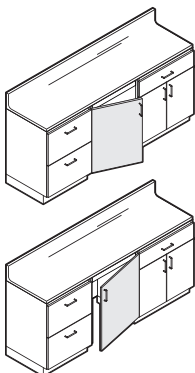
When desk frame with back panel is selected, side panels are included. Side and back panels extend to the top of the base of the adjacent cabinet to allow for easy installation of the cove molding.



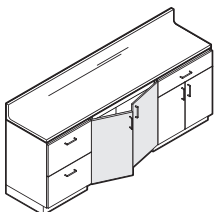
Doors are optional on desk frames with back panels. Single doors, hinged left or right, are available on 24"W desk frames. Double doors are available on 30"W and 36"W desk frames.



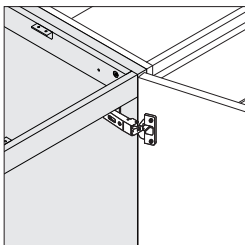
Doors align with doors on adjacent cabinets to allow visual access at floor level.



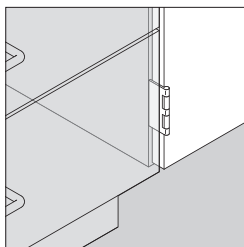
Desk frames with the single-door option are hinged on the left or right side. A left-hand unit has the hinge on the left side of the door. A right-hand unit has the hinge on the right side of the door.



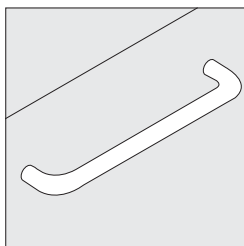
Desk frames with the double-door option open from the center out.



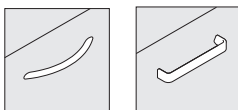
Euro hinge is standard on units with doors and allows the door to open a full 110°.



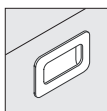
Five-knuckle hinge is optional on units with doors and allows the door to open 270° or 180° if connected to adjacent cabinet.



D pulls are standard when doors are specified.

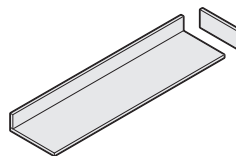


Contemporary Jazz

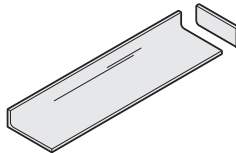


Opus

Additional door pull options are available. Optional pulls include:
• Contemporary
• Jazz
• Opus

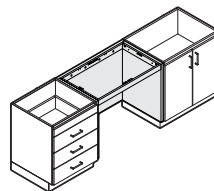


Laminate worksurface, ordered separately, is available with High-Pressure Laminate or custom laminate. High-Pressure Laminate has a matching 3 mm plastic front edge and 1 mm plastic edge on sides and back. Backsplash is standard with the worksurface. Laminate sidesplash is also available and must be ordered separately.
▶ Pages 216-219

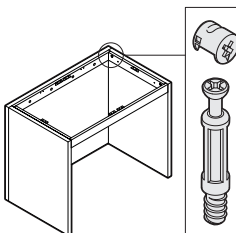


Solid surface worksurface, ordered separately, has an integrated backsplash. A solid surface sidesplash is also available and must be ordered separately.

Connections



Base or sink cabinets or structural wall must be attached to one or both sides of desk frame.



Cam-lock assembly hardware is used.

Folio Accessories

Storage Shelves

► Specifying, page 221

Product Details



Extra shelves are available for use in storage cabinets, bookcases, upper storage cabinets, and base cabinets.

Surface Materials

Shelves
• Melamine

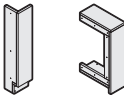
Actual Dimensions

Depth	14" or 24"
Width	12", 18", 21", 24", 30", or 36"

Fillers

► Specifying, page 222

Product Details



Fillers are available for use with base cabinets and upper storage cabinets.

Fillers close the gap between a cabinet and structural wall. Field cutting of filler may be required to achieve architectural fit.

Surface Materials

Fillers
• Melamine

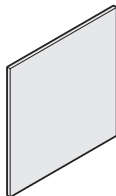
Actual Dimensions

Fillers	
Depth	3"
Width	6"
Height	24", 29", 30", 33", 35", or 36"

Mounting Board

► Specifying, page 222

Product Details



Mounting boards are available to provide a surface for equipment attachment.

Surface Materials

Mounting board
• Melamine

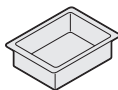
Actual Dimensions

Depth	3/4"
Width	34"
Height	36"

Plastic Drawer Liners

► Specifying, page 223

Product Details



Plastic drawer liners are available to place in any drawer of base cabinet to allow for ease of cleaning.

Plastic drawer liners ship in a package of four.

Surface Materials

Plastic drawer liner

- White plastic only

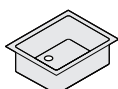
Actual Dimensions

Depth	16 ⁵ / ₈ "
Width	8 ³ / ₄ ", 14 ³ / ₄ ", 17 ³ / ₄ ", 20 ³ / ₄ ", 26 ³ / ₄ ", 32 ³ / ₄ "
Height	3 ³ / ₄ "

Sinks

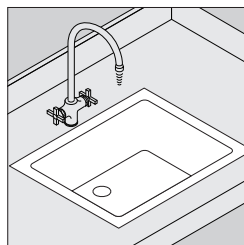
► Specifying, page 223

Product Details



Sinks are available in stainless steel, flanged, and undermount. ADA options are also available and can be purchased through Lab Crafters or any other external vendor.

Lab Crafters is a strategic business partner with extensive expertise in the design and manufacturer of laboratory spaces. As a service to Nurture dealers, we have established a process that provides a simple, streamlined method for purchasing accessories such as stainless steel sinks. RFQ templates and answers to your accessory product questions can be obtained by contacting Lab Crafters at lab-crafters.com. Purchases of stainless steel sinks are made directly with Lab Crafters (the products are not available thru Hedberg). Products also carry the manufacturer's warranty rather than Nurture's warranty.



Sinks are available in a variety of styles. We offer sinks in stainless steel. Undermount and lip-mount styles are available. Please see the specifying pages for available sink sizes.

CAUTION

Careful coordination is required to ensure the sink sizes match the cutout sizes in the worksurfaces and that the sinks are appropriately sized to fit in the sink base cabinet.

Undermount sinks are shipped standard with sink support brackets.

Mixing faucets are available with swing and stationary (rigid) options, clearance of 6" or 8", and with vacuum breakers.

CAUTION

Careful coordination is required for designs for worksurfaces, sinks, faucet, and eyewashes. Local code authorities require minimum head clearance and accessibility around eyewash fixtures.

Connections

Stainless steel sinks

can be fastened to the underside of the worksurfaces with spring clips (provided). A ⁵/₃₂" pilot hole is required at each fastening point. The sink is sealed with silicone.

In all undermount cases it is recommended that the sink support hardware (included with sink purchase) be installed to support the weight of the sink and contents.

In most cases, the plumbing sub-contractor will be responsible for installation of sinks.

Laminate worksurfaces can be field-cut/drilled for the placement of sinks and faucets.

Surface Materials

Sinks

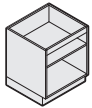
- Stainless steel

Folio

Storage Capacities

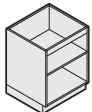
Cabinets with Adjustable Shelves

28" Cabinet



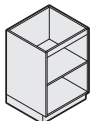
Size	Inside Dimensions		
	D	W	H
12"W Cabinet	20½"	10½"	20½"
18"W Cabinet	20½"	16½"	20½"
21"W Cabinet	20½"	19½"	20½"
24"W Cabinet	20½"	22½"	20½"
30"W Cabinet	20½"	28½"	20½"
36"W Cabinet	20½"	34½"	20½"

33"H ADA Cabinet



Size	Inside Dimensions		
	D	W	H
12"W Cabinet	20½"	10½"	25"
18"W Cabinet	20½"	16½"	25"
21"W Cabinet	20½"	19½"	25"
24"W Cabinet	20½"	22½"	25"
30"W Cabinet	20½"	28½"	25"
36"W Cabinet	20½"	34½"	25"

36"H Cabinet

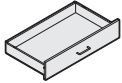


Size	Inside Dimensions		
	D	W	H
12"W Cabinet	20½"	10½"	28"
18"W Cabinet	20½"	16½"	28"
21"W Cabinet	20½"	19½"	28"
24"W Cabinet	20½"	22½"	28"
30"W Cabinet	20½"	28½"	28"
36"W Cabinet	20½"	34½"	28"

Note: Shelf adjusts in 1¼" vertical increments.
 Note: Height of adjustable shelf is ¾".

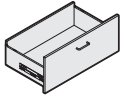
Cabinets with Drawers

7³/₈" Small Drawer



Size	Inside Dimensions		
	D	W	H
12"W Cabinet	19 ¹ / ₂ "	9 ¹ / ₄ "	4"
18"W Cabinet	19 ¹ / ₂ "	15 ¹ / ₄ "	4"
21"W Cabinet	19 ¹ / ₂ "	18 ¹ / ₄ "	4"
24"W Cabinet	19 ¹ / ₂ "	21 ¹ / ₄ "	4"
30"W Cabinet	19 ¹ / ₂ "	27 ¹ / ₄ "	4"
36"W Cabinet	19 ¹ / ₂ "	33 ¹ / ₄ "	4"

14⁷/₈" H Large Drawer



Size	Inside Dimensions		
	D	W	H
12"W Cabinet	19 ¹ / ₂ "	9 ¹ / ₄ "	7 ³ / ₄ "
18"W Cabinet	19 ¹ / ₂ "	15 ¹ / ₄ "	7 ³ / ₄ "
21"W Cabinet	19 ¹ / ₂ "	18 ¹ / ₄ "	7 ³ / ₄ "
24"W Cabinet	19 ¹ / ₂ "	21 ¹ / ₄ "	7 ³ / ₄ "
30"W Cabinet	19 ¹ / ₂ "	27 ¹ / ₄ "	7 ³ / ₄ "
36"W Cabinet	19 ¹ / ₂ "	33 ¹ / ₄ "	7 ³ / ₄ "

Cabinets with Fixed Open Shelf

Fixed Open Shelf in 33" ADA Cabinet



Size	Inside Dimensions		
	D	W	H
12"W Cabinet	21 ¹ / ₄ "	10 ¹ / ₂ "	10 ¹ / ₄ "
18"W Cabinet	21 ¹ / ₄ "	16 ¹ / ₂ "	10 ¹ / ₄ "
21"W Cabinet	21 ¹ / ₄ "	19 ¹ / ₂ "	10 ¹ / ₄ "
24"W Cabinet	21 ¹ / ₄ "	22 ¹ / ₂ "	10 ¹ / ₄ "
30"W Cabinet	21 ¹ / ₄ "	28 ¹ / ₂ "	10 ¹ / ₄ "
36"W Cabinet	21 ¹ / ₄ "	34 ¹ / ₂ "	10 ¹ / ₄ "

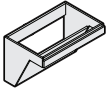
Fixed Open Shelf in 36" H Cabinet



Size	Inside Dimensions		
	D	W	H
12"W Cabinet	21 ¹ / ₄ "	10 ¹ / ₂ "	13 ¹ / ₄ "
18"W Cabinet	21 ¹ / ₄ "	16 ¹ / ₂ "	13 ¹ / ₄ "
21"W Cabinet	21 ¹ / ₄ "	19 ¹ / ₂ "	13 ¹ / ₄ "
24"W Cabinet	21 ¹ / ₄ "	22 ¹ / ₂ "	13 ¹ / ₄ "
30"W Cabinet	21 ¹ / ₄ "	28 ¹ / ₂ "	13 ¹ / ₄ "
36"W Cabinet	21 ¹ / ₄ "	34 ¹ / ₂ "	13 ¹ / ₄ "

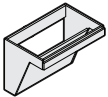
Sink Cabinets

33"H ADA Cabinet



Size	Inside Dimensions		
	D	W	H
36"W Cabinet	20½"	34½"	25"

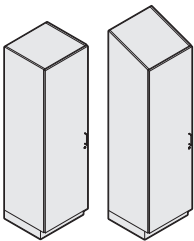
36"H Cabinet



Size	Inside Dimensions		
	D	W	H
36"W Cabinet	20½"	34½"	28"

Storage Cabinets

84"H or 92"H Cabinet

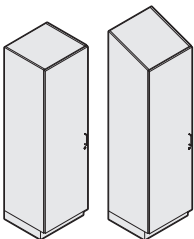


Size	Inside Dimensions			Height Below Fixed 36"H Shelf
	D	W	Height Above Fixed 36"H Shelf	
12"W Cabinet	21¼"	10½"	47¼"	30¾"
18"W Cabinet	21¼"	16½"	47¼"	30¾"
21"W Cabinet	21¼"	19½"	47¼"	30¾"
24"W Cabinet	21¼"	22½"	47¼"	30¾"
30"W Cabinet	21¼"	28½"	47¼"	30¾"
36"W Cabinet	21¼"	34½"	47¼"	30¾"

Tip: One shelf is fixed at 36"H.
 Note: Shelf adjusts in 1¼" vertical increments with the exception of the middle shelf.
 Note: Height of adjustable shelf is ¾".

Wardrobe Cabinets

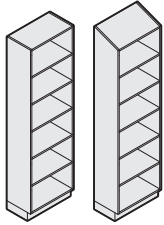
84"H or 92"H Cabinet



Size	Inside Dimensions			
	D	W	Height Above Fixed Shelf	Height Below Fixed Shelf (Wardrobe Area)
12"W Cabinet	21¼"	10½"	13"	64½"
18"W Cabinet	21¼"	16½"	13"	64½"
21"W Cabinet	21¼"	19½"	13"	64½"
24"W Cabinet	21¼"	22½"	13"	64½"
30"W Cabinet	21¼"	28½"	13"	64½"
36"W Cabinet	21¼"	34½"	13"	64½"

Bookcases

84"H or 89"H Bookcase



Size	Inside Dimensions			Height Above Fixed 36"H Shelf	Height Below Fixed 36"H Shelf
	D	W	H		
12"W Bookcase	11 1/4"	10 1/2"	47 1/4"	47 1/4"	30 3/4"
18"W Bookcase	11 1/4"	16 1/2"	47 1/4"	47 1/4"	30 3/4"
21"W Bookcase	11 1/4"	19 1/2"	47 1/4"	47 1/4"	30 3/4"
24"W Bookcase	11 1/4"	22 1/2"	47 1/4"	47 1/4"	30 3/4"
30"W Bookcase	11 1/4"	28 1/2"	47 1/4"	47 1/4"	30 3/4"
36"W Bookcase	11 1/4"	34 1/2"	47 1/4"	47 1/4"	30 3/4"

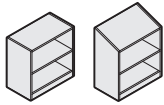
Tip: One shelf is fixed at 36"H.

Note: Shelf adjusts in 1/4" vertical increments with the exception of the middle shelf.

Note: Height of adjustable shelf is 3/4".

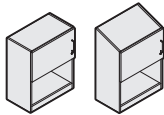
Upper Storage Cabinets

24"H or 29"H Cabinet



Size	Inside Dimensions		
	D	W	H
12"W Cabinet	11 3/4"	10 3/8"	20 1/2"
18"W Cabinet	11 3/4"	16 3/8"	20 1/2"
21"W Cabinet	11 3/4"	19 3/8"	20 1/2"
24"W Cabinet	11 3/4"	22 3/8"	20 1/2"
30"W Cabinet	11 3/4"	28 3/8"	20 1/2"
36"W Cabinet	11 3/4"	34 3/8"	20 1/2"

30"H or 35"H Cabinet



Size	Inside Dimensions		
	D	W	H
12"W Cabinet	11 3/4"	10 3/8"	26 1/2"
18"W Cabinet	11 3/4"	16 3/8"	26 1/2"
21"W Cabinet	11 3/4"	19 3/8"	26 1/2"
24"W Cabinet	11 3/4"	22 3/8"	26 1/2"
30"W Cabinet	11 3/4"	28 3/8"	26 1/2"
36"W Cabinet	11 3/4"	34 3/8"	26 1/2"

Note: Shelf adjusts in 1/4" vertical increments.

Note: Height of adjustable shelf is 3/4".

Folio

28"H Base Cabinets

	Standard Includes	Required to Specify
▶ Need help? Product details, page 156	<ul style="list-style-type: none"> Base cabinet, door and drawer fronts, and shelves: melamine D pull, if selected: nickel only Euro hinge, if selected: nickel only Edges: matching 3 mm plastic on doors and drawers and matching 1 mm plastic on all other edges Shelf pins Adjustable glides 	1 Style number 2 Laminate color number for base cabinet 3 Options, if selected (see below) ▶ See <i>Surface Materials</i> , page 681.

	Options	U.S. Price	Required to Specify
Door and Drawer Pulls	<ul style="list-style-type: none"> Contemporary: nickel only Opus: champagne only Jazz: nickel only 	No cost +\$12 per pull +\$17 per pull	Specify with <i>contemporary pull</i> . Specify with <i>Opus pull</i> . Specify with <i>jazz pull</i> .
Five-Knuckle Hinges	<ul style="list-style-type: none"> For cabinet with single door: nickel only For cabinet with double doors: nickel only 	+\$15 +\$30	Specify with <i>five-knuckle hinge</i> . Specify with <i>five-knuckle hinge</i> .
Lock and Keying	<ul style="list-style-type: none"> Lock 9201 Polished Chrome only Keying Factory and field-installed keying 	+\$31	Specify with <i>lock</i> . ▶ Page 716
Related Products	<ul style="list-style-type: none"> Shelves for base cabinets Fillers for base cabinets Plastic drawer liners 		▶ Page 221 ▶ Page 222 ▶ Page 223

Tip: Lock is located in top drawer only on units with multiple drawers or a drawer and door combination.

Tip: Additional shelves are available and must be specified separately.

Specification Information				
Dimensions			Style	U.S.
D	W	H	Number	Base Price

Open Cabinets with One Adjustable Shelf

24"	12"	27 ⁷ / ₁₆ "	HXBP1228	\$510
24"	18"	27 ⁷ / ₁₆ "	HXBP1828	\$539
24"	21"	27 ⁷ / ₁₆ "	HXBP2128	\$558
24"	24"	27 ⁷ / ₁₆ "	HXBP2428	\$578
24"	30"	27 ⁷ / ₁₆ "	HXBP3028	\$600
24"	36"	27 ⁷ / ₁₆ "	HXBP3628	\$621

Cabinets with Single Door and One Adjustable Shelf

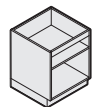
Hinged Left

24"	12"	27 ⁷ / ₁₆ "	HXBD1228L	\$619
24"	18"	27 ⁷ / ₁₆ "	HXBD1828L	\$663
24"	21"	27 ⁷ / ₁₆ "	HXBD2128L	\$694
24"	24"	27 ⁷ / ₁₆ "	HXBD2428L	\$716

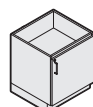
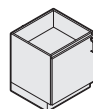
Hinged Right

24"	12"	27 ⁷ / ₁₆ "	HXBD1228R	\$619
24"	18"	27 ⁷ / ₁₆ "	HXBD1828R	\$663
24"	21"	27 ⁷ / ₁₆ "	HXBD2128R	\$694
24"	24"	27 ⁷ / ₁₆ "	HXBD2428R	\$716

▶ Specification Information, continued on next page



Tip: Height is for base cabinet without worksurface.



Folio

33"H ADA Base Cabinets

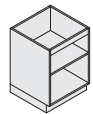
	Standard Includes	Required to Specify
▶ Need help? Product details, page 160	<ul style="list-style-type: none"> Storage cabinet, door and drawer fronts, and shelves: melamine D pull, if selected: nickel only Euro hinge, if selected: nickel only Edges: matching 3 mm plastic on doors and drawers and matching 1 mm plastic on all other edges Shelf pins Adjustable glides 	<ul style="list-style-type: none"> 1 Style number 2 Laminate color number for base cabinet 3 Options, if selected (see below) ▶ See <i>Surface Materials</i>, page 681.

	Options	U.S. Price	Required to Specify
Door and Drawer Pulls	<ul style="list-style-type: none"> Contemporary: nickel only Opus: champagne only Jazz: nickel only 	<ul style="list-style-type: none"> No cost +\$12 per pull +\$17 per pull 	<ul style="list-style-type: none"> Specify with contemporary pull. Specify with Opus pull. Specify with jazz pull.
Five-Knuckle Hinges	<ul style="list-style-type: none"> For cabinet with single door: nickel only For cabinet with double doors: nickel only 	<ul style="list-style-type: none"> +\$15 +\$30 	<ul style="list-style-type: none"> Specify with five-knuckle hinge. Specify with five-knuckle hinge.
Lock and Keying	<ul style="list-style-type: none"> Lock 9201 Polished Chrome only Keying Factory and field-installed keying 	<ul style="list-style-type: none"> +\$31 	<ul style="list-style-type: none"> Specify with lock. ▶ Page 716
Related Products	<ul style="list-style-type: none"> Shelves for base cabinets Fillers for base cabinets Plastic drawer liners 		<ul style="list-style-type: none"> ▶ Page 221 ▶ Page 222 ▶ Page 223

Tip: Lock is located in top drawer only on units with multiple drawers or a drawer and door combination.

Tip: Additional shelves are available and must be specified separately.

Specification Information				
Dimensions			Style	U.S.
D	W	H	Number	Base Price



Tip: Height is for base cabinet without worksurface.

Open Cabinets with One Adjustable Shelf

24"	12"	32"	HXBP1233A	\$519
24"	18"	32"	HXBP1833A	\$548
24"	21"	32"	HXBP2133A	\$569
24"	24"	32"	HXBP2433A	\$588
24"	30"	32"	HXBP3033A	\$610
24"	36"	32"	HXBP3633A	\$633

Cabinets with Single Door and One Adjustable Shelf

Hinged Left

24"	12"	32"	HXBD1233AL	\$584
24"	18"	32"	HXBD1833AL	\$622
24"	21"	32"	HXBD2133AL	\$652
24"	24"	32"	HXBD2433AL	\$670

Hinged Right

24"	12"	32"	HXBD1233AR	\$584
24"	18"	32"	HXBD1833AR	\$622
24"	21"	32"	HXBD2133AR	\$652
24"	24"	32"	HXBD2433AR	\$670

▶ Specification Information, continued on next page

► **Specification Information, continued from previous page**

Specification Information

Dimensions			Style Number	U.S. Base Price
D	W	H		

Cabinets with Double Doors and One Adjustable Shelf

24"	30"	32"	HXBD3033A	\$ 801
24"	36"	32"	HXBD3633A	\$ 834

Cabinets with One Small Drawer and One Large Drawer

24"	12"	32"	HXBC1233A	\$ 905
24"	18"	32"	HXBC1833A	\$ 961
24"	21"	32"	HXBC2133A	\$1004
24"	24"	32"	HXBC2433A	\$1031
24"	30"	32"	HXBC3033A	\$1067
24"	36"	32"	HXBC3633A	\$1103

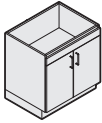
Cabinets with Three Small Drawers

24"	12"	32"	HXBM1233A	\$ 973
24"	18"	32"	HXBM1833A	\$1056
24"	21"	32"	HXBM2133A	\$1131
24"	24"	32"	HXBM2433A	\$1162
24"	30"	32"	HXBM3033A	\$1197
24"	36"	32"	HXBM3633A	\$1235

Cabinets with Open Shelf and Two Small Drawers

24"	12"	32"	HXCN1233A	\$ 851
24"	18"	32"	HXCN1833A	\$ 920
24"	21"	32"	HXCN2133A	\$ 979
24"	24"	32"	HXCN2433A	\$1008
24"	30"	32"	HXCN3033A	\$1042
24"	36"	32"	HXCN3633A	\$1079

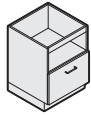
► **Specification Information, continued on next page**



 **For Canadian Pricing**
Multiply U.S. Price by the
Canadian price factor.
► See page 1 for details.

► **Specification Information, continued from previous page**

Specification Information				
Dimensions			Style	U.S.
D	W	H	Number	Base Price



Cabinets with Open Shelf and One Large Drawer

24"	12"	32"	HXBL1233A	\$783
24"	18"	32"	HXBL1833A	\$825
24"	21"	32"	HXBL2133A	\$852
24"	24"	32"	HXBL2433A	\$877
24"	30"	32"	HXBL3033A	\$912
24"	36"	32"	HXBL3633A	\$947

Support End Panel

For 33"H ADA Base Cabinets



Tip: An end panel must be attached to a worksurface. When ordering a worksurface for attachment to an end panel, the extended worksurface option must be specified. Worksurfaces are specified separately.

Tip: Height is for support end panel without worksurface attached.

Standard Includes	Required to Specify
<ul style="list-style-type: none"> Support end panel: melamine Edges: matching 1 mm plastic 	<ul style="list-style-type: none"> 1 Style number 2 Laminate color number for support end panel <p>► See <i>Surface Materials</i>, page 681.</p>

Specification Information				
Dimensions			Style	U.S.
D	W	H	Number	Price

24"	13 ¹ / ₁₆ "	32"	HXBE33A	\$138
-----	-----------------------------------	-----	----------------	-------



For Canadian Pricing

Multiply U.S. Price by the Canadian price factor.

► See page 1 for details.

Folio

36"H Base Cabinets

	Standard Includes	Required to Specify
▶ Need help? Product details, page 164	<ul style="list-style-type: none"> Base cabinet, door and drawer fronts, and shelves: melamine D pull, if selected: nickel only Euro hinge, if selected: nickel only Edges: matching 3 mm plastic on doors and drawers and matching 1 mm plastic on all other edges Shelf pins Adjustable glides 	1 Style number 2 Laminate color number for base cabinet 3 Options, if selected (see below) ▶ See <i>Surface Materials</i> , page 681.

	Options	U.S. Price	Required to Specify
Door and Drawer Pulls	<ul style="list-style-type: none"> Contemporary: nickel only Opus: champagne only Jazz: nickel only 	No cost +\$12 per pull +\$17 per pull	Specify with <i>contemporary pull</i> . Specify with <i>Opus pull</i> . Specify with <i>jazz pull</i> .
Five-Knuckle Hinges	<ul style="list-style-type: none"> For cabinet with single door: nickel only For cabinet with double doors: nickel only 	+\$15 +\$30	Specify with <i>five-knuckle hinge</i> . Specify with <i>five-knuckle hinge</i> .
Lock and Keying	Lock <ul style="list-style-type: none"> 9201 Polished Chrome only Keying <ul style="list-style-type: none"> Factory and field-installed keying 	+\$31	Specify with <i>lock</i> . ▶ Page 716
Related Products	<ul style="list-style-type: none"> Shelves for base cabinets Fillers for base cabinets Plastic drawer liners 		▶ Page 221 ▶ Page 222 ▶ Page 223

Tip: Lock is located in top drawer only on units with multiple drawers or a drawer and door combination.

Tip: Additional shelves are available and must be specified separately.

Specification Information				
Dimensions			Style	U.S.
D	W	H	Number	Base Price

Open Cabinets with One Adjustable Shelf

24"	12"	35"	HXBP1236	\$529
24"	18"	35"	HXBP1836	\$559
24"	21"	35"	HXBP2136	\$579
24"	24"	35"	HXBP2436	\$599
24"	30"	35"	HXBP3036	\$621
24"	36"	35"	HXBP3636	\$644
:	:	:	:	:

Cabinets with Single Door and One Adjustable Shelf

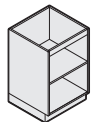
Hinged Left

24"	12"	35"	HXBD1236L	\$638
24"	18"	35"	HXBD1836L	\$683
24"	21"	35"	HXBD2136L	\$715
24"	24"	35"	HXBD2436L	\$737

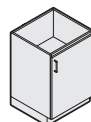
Hinged Right

24"	12"	35"	HXBD1236R	\$638
24"	18"	35"	HXBD1836R	\$683
24"	21"	35"	HXBD2136R	\$715
24"	24"	35"	HXBD2436R	\$737

▶ Specification Information, continued on next page



Tip: Height is for base cabinet without worksurface.



► Specification Information, continued from previous page

Specification Information

Dimensions			Style Number	U.S. Base Price
D	W	H		

Cabinets With Double Doors and One Adjustable Shelf

24"	30"	35"	HXBD3036	\$ 873
24"	36"	35"	HXBD3636	\$ 912

Cabinets with One Small Drawer, Single Door, and One Adjustable Shelf

Hinged Left

24"	12"	35"	HXBG1236L	\$ 804
24"	18"	35"	HXBG1836L	\$ 869
24"	21"	35"	HXBG2136L	\$ 920
24"	24"	35"	HXBG2436L	\$ 947

Hinged Right

24"	12"	35"	HXBG1236R	\$ 804
24"	18"	35"	HXBG1836R	\$ 869
24"	21"	35"	HXBG2136R	\$ 920
24"	24"	35"	HXBG2436R	\$ 947

Cabinets with One Small Drawer, Double Doors, and One Adjustable Shelf

24"	30"	35"	HXBG3036	\$1089
24"	36"	35"	HXBG3636	\$1135

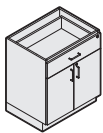
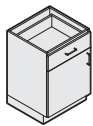
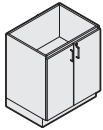
Cabinets with Two Large Drawers

24"	12"	35"	HXBF1236	\$1013
24"	18"	35"	HXBF1836	\$1063
24"	21"	35"	HXBF2136	\$1092
24"	24"	35"	HXBF2436	\$1121
24"	30"	35"	HXBF3036	\$1164
24"	36"	35"	HXBF3636	\$1205

Cabinets with Two Small Drawers and One Large Drawer

24"	12"	35"	HXBC1236	\$1081
24"	18"	35"	HXBC1836	\$1158
24"	21"	35"	HXBC2136	\$1219
24"	24"	35"	HXBC2436	\$1252
24"	30"	35"	HXBC3036	\$1294
24"	36"	35"	HXBC3636	\$1337

► Specification Information, continued on next page



 **For Canadian Pricing**
Multiply U.S. Price by the
Canadian price factor.
► See page 1 for details.

► **Specification Information, continued from previous page**

Specification Information				
Dimensions			Style Number	U.S. Base Price
D	W	H		



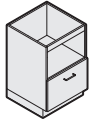
Cabinets with Four Small Drawers

24"	12"	35"	HXBR1236	\$1149
24"	18"	35"	HXBR1836	\$1253
24"	21"	35"	HXBR2136	\$1346
24"	24"	35"	HXBR2436	\$1383
24"	30"	35"	HXBR3036	\$1424
24"	36"	35"	HXBR3636	\$1469



Cabinets with Open Shelf and Two Small Drawers

24"	12"	35"	HXBN1236	\$ 861
24"	18"	35"	HXBN1836	\$ 931
24"	21"	35"	HXBN2136	\$ 989
24"	24"	35"	HXBN2436	\$1019
24"	30"	35"	HXBN3036	\$1053
24"	36"	35"	HXBN3636	\$1090



Cabinets with Open Shelf and One Large Drawer

24"	12"	35"	HXBL1236	\$ 793
24"	18"	35"	HXBL1836	\$ 836
24"	21"	35"	HXBL2136	\$ 862
24"	24"	35"	HXBL2436	\$ 888
24"	30"	35"	HXBL3036	\$ 923
24"	36"	35"	HXBL3636	\$ 958

Support End Panel
For 36"H Base Cabinets



Tip: An end panel must be attached to a worksurface. When ordering a worksurface for attachment to an end panel, the extended worksurface option must be specified. Worksurfaces are specified separately.

Tip: Height is for support end panel without worksurface attached.

Standard Includes	Required to Specify
-------------------	---------------------

- Support end panel: melamine
- Edges: matching 1 mm plastic

- 1 Style number
 - 2 Laminate color number for support end panel
- See *Surface Materials*, page 681.

Specification Information				
Dimensions			Style Number	U.S. Price
D	W	H		

24"	13/16"	35"	HXBE36	\$138
-----	--------	-----	---------------	-------

Folio Sink Cabinets

Standard Includes		Required to Specify
<ul style="list-style-type: none"> ▶ Need help? Product details, page 168 	<ul style="list-style-type: none"> • Sink cabinet: melamine • D pull, if selected: nickel only • Euro hinge, if selected: nickel only • Edges: matching 3 mm plastic on doors and drawers and matching 1 mm plastic on all other edges • Shelf pins • Adjustable glides 	<ul style="list-style-type: none"> 1 Style number 2 Laminate color number for sink cabinet 3 Options, if selected (see below) ▶ See <i>Surface Materials</i>, page 681.

Options	U.S. Price	Required to Specify
Door Pulls <ul style="list-style-type: none"> • Contemporary: nickel only • Opus: champagne only • Jazz: nickel only 	No cost +\$12 per pull +\$17 per pull	Specify with <i>contemporary pull</i> . Specify with <i>Opus pull</i> . Specify with <i>jazz pull</i> .
Five-Knuckle Hinges <ul style="list-style-type: none"> • For cabinet with single door: nickel only • For cabinet with double doors: nickel only 	+\$15 +\$30	Specify with <i>five-knuckle hinge</i> . Specify with <i>five-knuckle hinge</i> .
Lock and Keying <ul style="list-style-type: none"> • Lock • 9201 Polished Chrome only • Keying • Factory and field-installed keying 	+\$31	Specify with <i>lock</i> . ▶ Page 716
Related Products <ul style="list-style-type: none"> • Shelves for sink cabinets • Fillers for sink cabinets 		▶ Page 221 ▶ Page 222

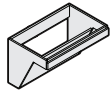
Tip: For inside dimensions of sink cabinets, ▶ See page 168.

Specification Information				
Dimensions			Style Number	U.S. Base Price
D	W	H		
:	:	:	:	:
:	:	:	:	:

Sink Cabinets with Angled Front

33"H ADA Sink Cabinet

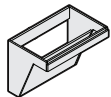
24"	36"	32"	HXBK3633A	\$848
:	:	:	:	:



Tip: Height is for sink cabinet without worksurface.

36"H Sink Cabinet

24"	36"	35"	HXBK3636	\$865
:	:	:	:	:



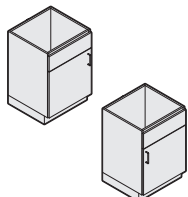
Sink Cabinets with Single Door

Hinged Left

24"	24"	35"	HXBKD2436L	\$786
-----	-----	-----	-------------------	-------

Hinged Right

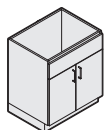
24"	24"	35"	HXBKD2436R	\$786
:	:	:	:	:



Sink Cabinets with Double Doors

24"	30"	35"	HXBKD3036	\$920
-----	-----	-----	------------------	-------

24"	36"	35"	HXBKD3636	\$956
:	:	:	:	:



Folio

84"H Storage Cabinets

	Standard Includes	Required to Specify
▶ Need help? Product details, page 172	<ul style="list-style-type: none"> Storage cabinet, door fronts, and shelves: melamine D pull, if selected: nickel only Euro hinge, if selected: nickel only Edges: matching 3 mm plastic on doors and drawers and matching 1 mm plastic on all other edges Shelf pins Adjustable glides 	<ol style="list-style-type: none"> Style number Laminate color number for storage cabinet Options, if selected (see below) <ul style="list-style-type: none"> ▶ See <i>Surface Materials</i>, page 681.

	Options	U.S. Price	Required to Specify
Door Pulls	<ul style="list-style-type: none"> Contemporary: nickel only Opus: champagne only Jazz: nickel only 	No cost +\$12 per pull +\$17 per pull	Specify with <i>contemporary pull</i> . Specify with <i>Opus pull</i> . Specify with <i>jazz pull</i> .
Five-Knuckle Hinges	<ul style="list-style-type: none"> For cabinet with single door: nickel only For cabinet with double doors: nickel only 	+\$30 +\$60	Specify with <i>five-knuckle hinge</i> . Specify with <i>five-knuckle hinge</i> .
Lock and Keying	Lock <ul style="list-style-type: none"> 9201 Polished Chrome only Keying <ul style="list-style-type: none"> Factory and field-installed keying 	+\$31	Specify with <i>lock</i> . ▶ Page 716
Related Products	<ul style="list-style-type: none"> Shelves for storage cabinets 		▶ Page 221

Tip: Additional shelves are available and must be specified separately.

Tip: One shelf is fixed at 36"H. All other shelves are adjustable.



Specification Information				
Dimensions			Style Number	U.S. Base Price
D	W	H		
24"	12"	84"	HXCP1284	\$ 886
24"	18"	84"	HXCP1884	\$1064
24"	21"	84"	HXCP2184	\$1192
24"	24"	84"	HXCP2484	\$1320
24"	30"	84"	HXCP3084	\$1497
24"	36"	84"	HXCP3684	\$1702

Open Cabinets with Five Shelves

24"	12"	84"	HXCP1284	\$ 886
24"	18"	84"	HXCP1884	\$1064
24"	21"	84"	HXCP2184	\$1192
24"	24"	84"	HXCP2484	\$1320
24"	30"	84"	HXCP3084	\$1497
24"	36"	84"	HXCP3684	\$1702

▶ Specification Information, continued on next page



For Canadian Pricing
 Multiply U.S. Price by the Canadian price factor.
 ▶ See page 1 for details.

► **Specification Information, continued from previous page**

Specification Information

Dimensions			Style Number	U.S. Base Price
D	W	H		

Cabinets with Single Door and Five Shelves

Hinged Left

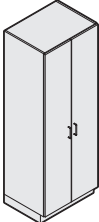
24"	12"	84"	HXCD1284L	\$1094
24"	18"	84"	HXCD1884L	\$1311
24"	21"	84"	HXCD2184L	\$1471
24"	24"	84"	HXCD2484L	\$1630
:	:	:	:	:

Hinged Right

24"	12"	84"	HXCD1284R	\$1094
24"	18"	84"	HXCD1884R	\$1311
24"	21"	84"	HXCD2184R	\$1471
24"	24"	84"	HXCD2484R	\$1630
:	:	:	:	:

Cabinets with Double Doors and Five Shelves

24"	30"	84"	HXCD3084	\$1847
24"	36"	84"	HXCD3684	\$2108
:	:	:	:	:



For Canadian Pricing

Multiply U.S. Price by the Canadian price factor.

► See page 1 for details.

Folio

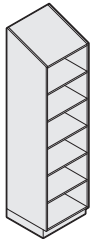
92"H Storage Cabinets with Sloped Top

	Standard Includes	Required to Specify
▶ Need help? Product details, page 172	<ul style="list-style-type: none"> Storage cabinet, sloped top, door fronts, and shelves: melamine D pull, if selected: nickel only Euro hinge, if selected: nickel only Edges: matching 3 mm plastic on doors and matching 1 mm plastic on all other edges Shelf pins Adjustable glides 	<ol style="list-style-type: none"> Style number Laminate color number for storage cabinet Options, if selected (see below) ▶ See <i>Surface Materials</i> , page 681.

	Options	U.S. Price	Required to Specify
Door Pulls	<ul style="list-style-type: none"> Contemporary: nickel only Opus: champagne only Jazz: nickel only 	No cost +\$12 per pull +\$17 per pull	Specify with <i>contemporary pull</i> . Specify with <i>Opus pull</i> . Specify with <i>jazz pull</i> .
Five-Knuckle Hinges	<ul style="list-style-type: none"> For cabinet with single door: nickel only For cabinet with double doors: nickel only 	+\$30 +\$60	Specify with <i>five-knuckle hinge</i> . Specify with <i>five-knuckle hinge</i> .
Lock and Keying	Lock <ul style="list-style-type: none"> 9201 Polished Chrome only Keying <ul style="list-style-type: none"> Factory and field-installed keying 	+\$31	Specify with <i>lock</i> . ▶ Page 716
Related Products	<ul style="list-style-type: none"> Shelves for storage cabinets 		▶ Page 221

Tip: Additional shelves are available and must be specified separately.

Tip: One shelf is fixed at 36"H. All other shelves are adjustable.



Specification Information				
Dimensions			Style	U.S.
D	W	H	Number	Base Price

Open Cabinets with Five Shelves

24"	12"	92"	HXCP1292S	\$ 974
24"	18"	92"	HXCP1892S	\$1170
24"	21"	92"	HXCP2192S	\$1310
24"	24"	92"	HXCP2492S	\$1452
24"	30"	92"	HXCP3092S	\$1646
24"	36"	92"	HXCP3692S	\$1873

▶ Specification Information, continued on next page



For Canadian Pricing
 Multiply U.S. Price by the Canadian price factor.
 ▶ See page 1 for details.

► **Specification Information, continued from previous page**

Specification Information

Dimensions			Style Number	U.S. Base Price
D	W	H		

Cabinets with Single Door and Five Shelves

Hinged Left

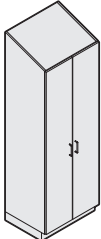
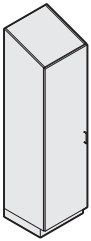
24"	12"	92"	HXCD1292LS	\$1203
24"	18"	92"	HXCD1892LS	\$1442
24"	21"	92"	HXCD2192LS	\$1618
24"	24"	92"	HXCD2492LS	\$1793

Hinged Right

24"	12"	92"	HXCD1292RS	\$1203
24"	18"	92"	HXCD1892RS	\$1442
24"	21"	92"	HXCD2192RS	\$1618
24"	24"	92"	HXCD2492RS	\$1793

Cabinets with Double Doors and Five Shelves

24"	30"	92"	HXCD3092S	\$2031
24"	36"	92"	HXCD3692S	\$2319



For Canadian Pricing

Multiply U.S. Price by the
Canadian price factor.

► See page 1 for details.

Folio

84"H Wardrobe Cabinets

Standard Includes		Required to Specify
<ul style="list-style-type: none"> ▶ Need help? Product details, page 176 	<ul style="list-style-type: none"> Wardrobe, door fronts, and fixed shelf: melamine D pull, if selected: nickel only Euro hinge, if selected: nickel only Edges: matching 3 mm plastic on doors and matching 1 mm plastic on all other edges Adjustable glides Hanger bar: chrome 	<ol style="list-style-type: none"> Style number Laminate color number for wardrobe cabinet Options, if selected (see below) <ul style="list-style-type: none"> ▶ See <i>Surface Materials</i>, page 681.

Options	U.S. Price	Required to Specify
Door Pulls <ul style="list-style-type: none"> Contemporary: nickel only Opus: champagne only Jazz: nickel only 	No cost +\$12 per pull +\$17 per pull	Specify with <i>contemporary pull</i> . Specify with <i>Opus pull</i> . Specify with <i>jazz pull</i> .
Five-Knuckle Hinges <ul style="list-style-type: none"> For cabinet with single door: nickel only For cabinet with double doors: nickel only 	+\$30 +\$60	Specify with <i>five-knuckle hinge</i> . Specify with <i>five-knuckle hinge</i> .
Lock and Keying <ul style="list-style-type: none"> Lock 9201 Polished Chrome only Keying Factory and field-installed keying 	+\$31	Specify with <i>lock</i> . ▶ Page 716

Specification Information				
Dimensions			Style	U.S.
D	W	H	Number	Base Price

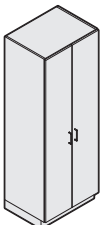
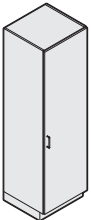
Wardrobe Cabinets with Single Door and One Fixed Shelf

Hinged Left				
24"	12"	84"	HXCW1284L	\$ 973
24"	18"	84"	HXCW1884L	\$1137
24"	21"	84"	HXCW2184L	\$1263
24"	24"	84"	HXCW2484L	\$1387
:	:	:	:	:

Hinged Right				
24"	12"	84"	HXCW1284R	\$ 973
24"	18"	84"	HXCW1884R	\$1137
24"	21"	84"	HXCW2184R	\$1263
24"	24"	84"	HXCW2484R	\$1387
:	:	:	:	:

Wardrobe Cabinets with Double Doors and One Fixed Shelf

24"	30"	84"	HXCW3084	\$1552
24"	36"	84"	HXCW3684	\$1716
:	:	:	:	:



Folio 92"H Wardrobe Cabinets with Sloped Top

Folio
92"H Wardrobe
Cabinets with
Sloped Top

	Standard Includes	Required to Specify
▶ Need help? Product details, page 176	<ul style="list-style-type: none"> Wardrobe, sloped top, door fronts, and fixed shelf: melamine D pull, if selected: nickel only Euro hinge, if selected: nickel only Edges: matching 3 mm plastic on doors and matching 1 mm plastic on all other edges Adjustable glides Hanger bar: chrome 	<ol style="list-style-type: none"> Style number Laminate color number for wardrobe cabinet Options, if selected (see below) ▶ See <i>Surface Materials</i> , page 681.

	Options	U.S. Price	Required to Specify
Door Pulls	<ul style="list-style-type: none"> Contemporary: nickel only Opus: champagne only Jazz: nickel only 	No cost +\$12 per pull +\$17 per pull	Specify with <i>contemporary pull</i> . Specify with <i>Opus pull</i> . Specify with <i>jazz pull</i> .
Five-Knuckle Hinges	<ul style="list-style-type: none"> For cabinet with single door: nickel only For cabinet with double doors: nickel only 	+\$30 +\$60	Specify with <i>five-knuckle hinge</i> . Specify with <i>five-knuckle hinge</i> .
Lock and Keying	Lock <ul style="list-style-type: none"> 9201 Polished Chrome only Keying <ul style="list-style-type: none"> Factory and field-installed keying 	+\$31	Specify with <i>lock</i> . ▶ Page 716

Specification Information				
Dimensions			Style	U.S.
D	W	H	Number	Base Price
:	:	:	:	:
:	:	:	:	:

Wardrobe Cabinets with Single Door and One Fixed Shelf

Hinged Left

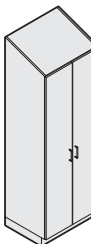
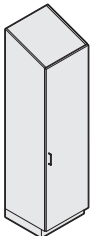
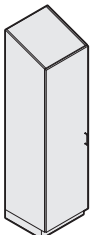
24"	12"	92"	HXCW1292LS	\$1070
24"	18"	92"	HXCW1892LS	\$1250
24"	21"	92"	HXCW2192LS	\$1388
24"	24"	92"	HXCW2492LS	\$1527
:	:	:	:	:

Hinged Right

24"	12"	92"	HXCW1292RS	\$1070
24"	18"	92"	HXCW1892RS	\$1250
24"	21"	92"	HXCW2192RS	\$1388
24"	24"	92"	HXCW2492RS	\$1527
:	:	:	:	:

Wardrobe Cabinets with Double Doors and One Fixed Shelf

24"	30"	92"	HXCW3092S	\$1707
24"	36"	92"	HXCW3692S	\$1888
:	:	:	:	:



Folio 84"H Bookcases

Tip: One shelf is fixed at 36"H. All other shelves are adjustable.

	Standard Includes	Required to Specify
▶ Need help? Product details, page 178	<ul style="list-style-type: none"> Bookcase, door fronts, and shelves: melamine D pull, if selected: nickel only Euro hinge, if selected: nickel only Edges: matching 3 mm plastic on doors and matching 1 mm plastic on all other edges Shelf Pins Adjustable glides 	1 Style number 2 Laminate color number for bookcase 3 Options, if selected (see below) ▶ See <i>Surface Materials</i> , page 681.

	Options	U.S. Price	Required to Specify
Door Pulls	<ul style="list-style-type: none"> Contemporary: nickel only Opus: champagne only Jazz: nickel only 	No cost +\$12 per pull +\$17 per pull	Specify with <i>contemporary pull</i> . Specify with <i>Opus pull</i> . Specify with <i>jazz pull</i> .
Five-Knuckle Hinges	<ul style="list-style-type: none"> For cabinet with single door: nickel only For cabinet with double doors: nickel only 	+\$30 +\$60	Specify with <i>five-knuckle hinge</i> . Specify with <i>five-knuckle hinge</i> .
Lock and Keying	Lock <ul style="list-style-type: none"> 9201 Polished Chrome only Keying <ul style="list-style-type: none"> Factory and field-installed keying 	+\$31	Specify with <i>lock</i> . ▶ Page 716
Related Products	<ul style="list-style-type: none"> Shelves for bookcases 		▶ Page 221

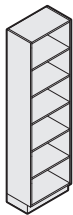
Tip: Additional shelves are available and must be specified separately.

Specification Information				
Dimensions			Style Number	U.S. Base Price
D	W	H		

Open Bookcase with Five Shelves

14"	12"	84"	HXCBP1284	\$ 753
14"	18"	84"	HXCBP1884	\$ 904
14"	21"	84"	HXCBP2184	\$1013
14"	24"	84"	HXCBP2484	\$1122
14"	30"	84"	HXCBP3084	\$1272
14"	36"	84"	HXCBP3684	\$1447

▶ Specification Information, continued on next page



For Canadian Pricing
 Multiply U.S. Price by the Canadian price factor.
 ▶ See page 1 for details.

► **Specification Information, continued from previous page**

Specification Information

Dimensions			Style Number	U.S. Base Price
D	W	H		

Bookcases with Single Door and Five Shelves

Hinged Left

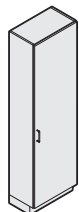
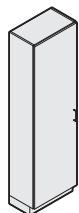
14"	12"	84"	HXCBD1284L	\$ 930
14"	18"	84"	HXCBD1884L	\$1115
14"	21"	84"	HXCBD2184L	\$1250
14"	24"	84"	HXCBD2484L	\$1385

Hinged Right

14"	12"	84"	HXCBD1284R	\$ 930
14"	18"	84"	HXCBD1884R	\$1115
14"	21"	84"	HXCBD2184R	\$1250
14"	24"	84"	HXCBD2484R	\$1385

Bookcases with Double Doors and Five Shelves

14"	30"	84"	HXCBD3084	\$1569
14"	36"	84"	HXCBD3684	\$1792



 **For Canadian Pricing**
Multiply U.S. Price by the
Canadian price factor.
► See page 1 for details.

Folio

89"H Bookcases with Sloped Top

Tip: One shelf is fixed at 36"H. All other shelves are adjustable.

	Standard Includes	Required to Specify
▶ Need help? Product details, page 178	<ul style="list-style-type: none"> Bookcase, sloped top, door fronts, and shelves: melamine D pull, if selected: nickel only Euro hinge, if selected: nickel only Edges: matching 3 mm plastic on doors and matching 1 mm plastic on all other edges Shelf pins Adjustable glides 	<ul style="list-style-type: none"> 1 Style number 2 Laminate color number for bookcase 3 Options, if selected (see below) ▶ See <i>Surface Materials</i>, page 681.

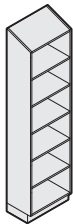
	Options	U.S. Price	Required to Specify
Door Pulls	<ul style="list-style-type: none"> Contemporary: nickel only Opus: champagne only Jazz: nickel only 	<ul style="list-style-type: none"> No cost +\$12 per pull +\$17 per pull 	<ul style="list-style-type: none"> Specify with <i>contemporary pull</i>. Specify with <i>Opus pull</i>. Specify with <i>jazz pull</i>.
Five-Knuckle Hinges	<ul style="list-style-type: none"> For cabinet with single door: nickel only For cabinet with double doors: nickel only 	<ul style="list-style-type: none"> +\$30 +\$60 	<ul style="list-style-type: none"> Specify with <i>five-knuckle hinge</i>. Specify with <i>five-knuckle hinge</i>.
Lock and Keying	<ul style="list-style-type: none"> Lock 9201 Polished Chrome only Keying Factory and field-installed keying 	<ul style="list-style-type: none"> +\$31 	<ul style="list-style-type: none"> Specify with <i>lock</i>. ▶ Page 716
Related Products	<ul style="list-style-type: none"> Shelves for bookcases 		▶ Page 221

Tip: Additional shelves are available and must be specified separately.

Specification Information				
Dimensions			Style	U.S.
D	W	H	Number	Base Price
...

Open Bookcase with Five Shelves				
14"	12"	89"	HXCBP1289S	\$ 828
14"	18"	89"	HXCBP1889S	\$ 994
14"	21"	89"	HXCBP2189S	\$1114
14"	24"	89"	HXCBP2489S	\$1233
14"	30"	89"	HXCBP3089S	\$1400
14"	36"	89"	HXCBP3689S	\$1592
...

▶ **Specification Information, continued on next page**



 **For Canadian Pricing**
 Multiply U.S. Price by the Canadian price factor.
 ▶ See page 1 for details.

► **Specification Information, continued from previous page**

Specification Information

Dimensions			Style	U.S.
D	W	H	Number	Base Price

Bookcases with Single Door and Five Shelves

Hinged Left

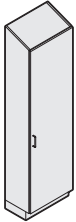
14"	12"	89"	HXCBD1289LS	\$1022
14"	18"	89"	HXCBD1889LS	\$1226
14"	21"	89"	HXCBD2189LS	\$1375
14"	24"	89"	HXCBD2489LS	\$1524

Hinged Right

14"	12"	89"	HXCBD1289RS	\$1022
14"	18"	89"	HXCBD1889RS	\$1226
14"	21"	89"	HXCBD2189RS	\$1375
14"	24"	89"	HXCBD2489RS	\$1524

Bookcases with Double Doors and Five Shelves

14"	30"	89"	HXCBD3089S	\$1726
14"	36"	89"	HXCBD3689S	\$1972



For Canadian Pricing

Multiply U.S. Price by the Canadian price factor.

► See page 1 for details.

Folio Upper Storage Cabinets

Tip: Shelves in open upper storage cabinet are adjustable.

	Standard Includes	Required to Specify
▶ Need help? Product details, page 180	<ul style="list-style-type: none"> Upper storage cabinet, door fronts, and shelves: melamine D pull, if selected: nickel only Euro hinge, if selected: nickel only Edges: matching 3 mm plastic on doors and matching 1 mm plastic on all other edges Wall attachment brackets Shelf pins 	<ol style="list-style-type: none"> Style number Laminate color number for upper storage cabinet Options, if selected (see below) ▶ See <i>Surface Materials</i> , page 681.

	Options	U.S. Price	Required to Specify
Door Pulls	<ul style="list-style-type: none"> Contemporary: nickel only Opus: champagne only Jazz: nickel only 	No cost +\$12 per pull +\$17 per pull	Specify with <i>contemporary pull</i> . Specify with <i>Opus pull</i> . Specify with <i>jazz pull</i> .
Five-Knuckle Hinges	<ul style="list-style-type: none"> For cabinet with single door: nickel only For cabinet with double doors: nickel only 	+\$15 +\$30	Specify with <i>five-knuckle hinge</i> . Specify with <i>five-knuckle hinge</i> .
Lock and Keying	Lock <ul style="list-style-type: none"> 9201 Polished Chrome only Keying <ul style="list-style-type: none"> Factory and field-installed keying 	+\$31	Specify with <i>lock</i> . ▶ Page 716
Related Products	<ul style="list-style-type: none"> Shelves for upper storage cabinets Fillers for upper storage cabinets 		▶ Page 221 ▶ Page 222

Specification Information

Dimensions			Style	Number	U.S.
D	W	H	Number	of Shelves	Base Price

Open Upper Storage Cabinets

14"	12"	24"	HXUP1224	1	\$225
14"	18"	24"	HXUP1824	1	\$279
14"	21"	24"	HXUP2124	1	\$302
14"	24"	24"	HXUP2424	1	\$326
14"	30"	24"	HXUP3024	1	\$380
14"	36"	24"	HXUP3624	1	\$451
14"	12"	30"	HXUP1230	2	\$248
14"	18"	30"	HXUP1830	2	\$303
14"	21"	30"	HXUP2130	2	\$330
14"	24"	30"	HXUP2430	2	\$357
14"	30"	30"	HXUP3030	2	\$416
14"	36"	30"	HXUP3630	2	\$489

▶ Specification Information, continued on next page



For Canadian Pricing
 Multiply U.S. Price by the Canadian price factor.
 ▶ See page 1 for details.

► Specification Information, continued from previous page

Specification Information

Dimensions			Style Number	Number of Shelves	U.S. Base Price
D	W	H			

Upper Storage Cabinets with Single Door

Hinged Left

14"	12"	24"	HXUD1224L	1	\$345
14"	18"	24"	HXUD1824L	1	\$428
14"	21"	24"	HXUD2124L	1	\$465
14"	12"	30"	HXUD1230L	2	\$381
14"	18"	30"	HXUD1830L	2	\$472
14"	21"	30"	HXUD2130L	2	\$512

Hinged Right

14"	12"	24"	HXUD1224R	1	\$345
14"	18"	24"	HXUD1824R	1	\$428
14"	21"	24"	HXUD2124R	1	\$465
14"	12"	30"	HXUD1230R	2	\$381
14"	18"	30"	HXUD1830R	2	\$472
14"	21"	30"	HXUD2130R	2	\$512

Upper Storage Cabinets with Double Doors

14"	24"	24"	HXUD2424	1	\$500
14"	30"	24"	HXUD3024	1	\$572
14"	36"	24"	HXUD3624	1	\$664
14"	24"	30"	HXUD2430	2	\$550
14"	30"	30"	HXUD3030	2	\$629
14"	36"	30"	HXUD3630	2	\$730

Upper Storage Cabinets with Single Door and Open Shelf

Hinged Left

14"	12"	30"	HXUDP1230L	1	\$399
14"	18"	30"	HXUDP1830L	1	\$495
14"	21"	30"	HXUDP2130L	1	\$537

Hinged Right

14"	12"	30"	HXUDP1230R	1	\$399
14"	18"	30"	HXUDP1830R	1	\$495
14"	21"	30"	HXUDP2130R	1	\$537

Upper Storage Cabinets with Double Doors and Open Shelf

14"	24"	30"	HXUDP2430	1	\$578
14"	30"	30"	HXUDP3030	1	\$660
14"	36"	30"	HXUDP3630	1	\$766



Tip: Shelves behind full doors are adjustable.



Tip: Shelves on upper storage cabinets with single or double doors and open shelf are fixed.



Folio

Upper Storage Cabinets with Sloped Top

Tip: Shelves in open upper storage cabinet are adjustable.

	Standard Includes	Required to Specify
▶ Need help? Product details, page 180	<ul style="list-style-type: none"> Upper storage cabinet, sloped top, door fronts, and shelves: melamine D pull, if selected: nickel only Euro hinge, if selected: nickel only Edges: matching 3 mm plastic on doors and matching 1 mm plastic on all other edges Wall attachment brackets Shelf pins 	<ol style="list-style-type: none"> Style number Laminate color number for upper storage cabinet Options, if selected (see below) <p>▶ See <i>Surface Materials</i>, page 681.</p>

	Options	U.S. Price	Required to Specify
Door Pulls	<ul style="list-style-type: none"> Contemporary: nickel only Opus: champagne only Jazz: nickel only 	No cost +\$12 per pull +\$17 per pull	Specify with <i>contemporary pull</i> . Specify with <i>Opus pull</i> . Specify with <i>jazz pull</i> .
Five-Knuckle Hinges	<ul style="list-style-type: none"> For cabinet with single door: nickel only For cabinet with double doors: nickel only 	+\$15 +\$30	Specify with <i>five-knuckle hinge</i> . Specify with <i>five-knuckle hinge</i> .
Lock and Keying	Lock <ul style="list-style-type: none"> 9201 Polished Chrome only Keying <ul style="list-style-type: none"> Factory and field-installed keying 	+\$31	Specify with <i>lock</i> . ▶ Page 716
Related Products	<ul style="list-style-type: none"> Shelves for upper storage cabinets Fillers for upper storage cabinets 		▶ Page 221 ▶ Page 222

Specification Information					
Dimensions			Style	Number	U.S.
D	W	H	Number	of Shelves	Base Price

Open Upper Storage Cabinets					
D	W	H	Style Number	Number of Shelves	U.S. Base Price
14"	12"	29"	HXUP1229S	1	\$246
14"	18"	29"	HXUP1829S	1	\$307
14"	21"	29"	HXUP2129S	1	\$332
14"	24"	29"	HXUP2429S	1	\$358
14"	30"	29"	HXUP3029S	1	\$417
14"	36"	29"	HXUP3629S	1	\$497
14"	12"	35"	HXUP1235S	2	\$272
14"	18"	35"	HXUP1835S	2	\$333
14"	21"	35"	HXUP2135S	2	\$362
14"	24"	35"	HXUP2435S	2	\$392
14"	30"	35"	HXUP3035S	2	\$458
14"	36"	35"	HXUP3635S	2	\$538

▶ Specification Information, continued on next page



 **For Canadian Pricing**
 Multiply U.S. Price by the Canadian price factor.
 ▶ See page 1 for details.

► Specification Information, continued from previous page

Specification Information

Dimensions			Style Number	Number of Shelves	U.S. Base Price
D	W	H			

Upper Storage Cabinets with Single Door

Hinged Left

14"	12"	29"	HXUD1229LS	1	\$381
14"	18"	29"	HXUD1829LS	1	\$472
14"	21"	29"	HXUD2129LS	1	\$512
14"	12"	35"	HXUD1235LS	2	\$418
14"	18"	35"	HXUD1835LS	2	\$519
14"	21"	35"	HXUD2135LS	2	\$563

Hinged Right

14"	12"	29"	HXUD1229RS	1	\$381
14"	18"	29"	HXUD1829RS	1	\$472
14"	21"	29"	HXUD2129RS	1	\$512
14"	12"	35"	HXUD1235RS	2	\$418
14"	18"	35"	HXUD1835RS	2	\$519
14"	21"	35"	HXUD2135RS	2	\$563

Upper Storage Cabinets with Double Doors

14"	24"	29"	HXUD2429S	1	\$550
14"	30"	29"	HXUD3029S	1	\$629
14"	36"	29"	HXUD3629S	1	\$730
14"	24"	35"	HXUD2435S	2	\$605
14"	30"	35"	HXUD3035S	2	\$692
14"	36"	35"	HXUD3635S	2	\$803

Upper Storage Cabinets with Single Door and Open Shelf

Hinged Left

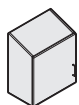
14"	12"	35"	HXUDP1235LS	1	\$439
14"	18"	35"	HXUDP1835LS	1	\$545
14"	21"	35"	HXUDP2135LS	1	\$591

Hinged Right

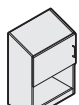
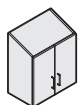
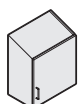
14"	12"	35"	HXUDP1235RS	1	\$439
14"	18"	35"	HXUDP1835RS	1	\$545
14"	21"	35"	HXUDP2135RS	1	\$591

Upper Storage Cabinets with Double Doors and Open Shelf

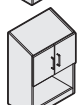
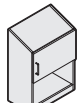
14"	24"	35"	HXUDP2435S	1	\$635
14"	30"	35"	HXUDP3035S	1	\$727
14"	36"	35"	HXUDP3635S	1	\$843



Tip: Shelves behind full doors are adjustable.



Tip: Shelves on upper storage cabinets with single or double doors and open shelf are fixed.



Folio

4"H Laminate Sidesplash

Folio
4"H Laminate Sidesplash



Tip: Overall length is intended to be adjacent to tall cabinets.

Standard Includes		Required to Specify
▶ Need help? Product details, page 182	<ul style="list-style-type: none"> Laminate sidesplash: laminate Edge band: 1 mm plastic 	<ol style="list-style-type: none"> Style number Laminate color number for sidesplash Plastic color number for edge on sidesplash Options, if selected (see below) <p>▶ See <i>Surface Materials</i>, page 681.</p>

Options	U.S. Price	Required to Specify
Surface Materials <ul style="list-style-type: none"> Laminate Steelcase laminate Open Line laminate 	No cost No cost +\$21 plus the cost of laminate	<p>▶ See <i>Surface Materials</i>, page 681.</p> <p>▶ See <i>Surface Materials</i>, page 681.</p> <p>▶ See <i>Surface Materials</i>, page 681.</p>

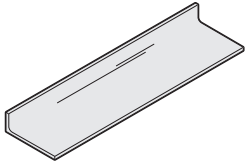
Specification Information			
Dimensions		Style Number	U.S. Base Price
D	W		
21"	4"	HXWS424L	\$52

Folio



For Canadian Pricing
 Multiply U.S. Price by the Canadian price factor.
 ▶ See page 1 for details.

Folio Solid Surface Worksurfaces



Tip: Extended work surface option adds 13/16" length to work surface for use with one end panel.

Tip: 12"W, 18"W, 21"W, and 120"W work surfaces are not available with the extended work surface option.

Tip: Worksurfaces must be attached to base cabinets or desk frames.

Standard Includes	Required to Specify
<ul style="list-style-type: none"> Need help? Product details, page 182 Solid surface work surface with integrated backsplash 	<ul style="list-style-type: none"> 1 Style number 2 Solid surface color number for work surface and backsplash 3 Options, if selected (see below) ▶ See <i>Surface Materials</i>, page 681.

Options	U.S. Price	Required to Specify
<ul style="list-style-type: none"> Extended work surface 	No cost	Specify with extended work surface.

Specification Information						
Dimensions D W	Style Number	U.S. Prices				
		Price Group A	Price Group B	Price Group C	Price Group D	Price Group E

Solid Surface Worksurfaces with Integrated Backsplash

24"	12"	HXW1224S	\$ 534	\$ 577	\$ 592	\$ 662	\$ 737
24"	18"	HXW1824S	\$ 568	\$ 614	\$ 630	\$ 704	\$ 783
24"	21"	HXW2124S	\$ 602	\$ 650	\$ 669	\$ 747	\$ 831
24"	24"	HXW2424S	\$ 632	\$ 683	\$ 702	\$ 784	\$ 872
24"	27"	HXW2724S	\$ 679	\$ 733	\$ 754	\$ 842	\$ 937
24"	30"	HXW3024S	\$ 726	\$ 784	\$ 806	\$ 900	\$1002
24"	33"	HXW3324S	\$ 772	\$ 833	\$ 857	\$ 957	\$1065
24"	36"	HXW3624S	\$ 818	\$ 884	\$ 908	\$1015	\$1129
24"	39"	HXW3924S	\$ 865	\$ 935	\$ 961	\$1073	\$1194
24"	42"	HXW4224S	\$ 912	\$ 985	\$1012	\$1130	\$1258
24"	45"	HXW4524S	\$ 959	\$1036	\$1064	\$1189	\$1323
24"	48"	HXW4824S	\$1005	\$1085	\$1115	\$1246	\$1387
24"	51"	HXW5124S	\$1051	\$1135	\$1166	\$1304	\$1450
24"	54"	HXW5424S	\$1098	\$1185	\$1219	\$1361	\$1515
24"	60"	HXW6024S	\$1202	\$1298	\$1334	\$1490	\$1659
24"	66"	HXW6624S	\$1306	\$1410	\$1450	\$1619	\$1802
24"	72"	HXW7224S	\$1410	\$1522	\$1565	\$1748	\$1946
24"	78"	HXW7824S	\$1548	\$1672	\$1719	\$1919	\$2136
24"	84"	HXW8424S	\$1685	\$1820	\$1870	\$2090	\$2326
24"	90"	HXW9024S	\$1822	\$1968	\$2023	\$2259	\$2515
24"	96"	HXW9624S	\$1959	\$2116	\$2174	\$2429	\$2704
24"	102"	HXW10224S	\$2097	\$2264	\$2328	\$2600	\$2894
24"	108"	HXW10824S	\$2234	\$2413	\$2479	\$2771	\$3083
24"	114"	HXW11424S	\$2344	\$2531	\$2602	\$2907	\$3235
24"	120"	HXW12024S	\$2454	\$2651	\$2724	\$3043	\$3387



For Canadian Pricing
Multiply U.S. Price by the Canadian price factor.
▶ See page 1 for details.

Folio

4"H Solid Surface Sidesplash

Folio
4"H Solid Surface
Sidesplash

Tip: Overall length is intended to be adjacent to tall cabinets.

Standard Includes		Required to Specify
▶ Need help? Product details, page 182	• Solid surface sidesplash	1 Style number 2 Solid surface color number for sidesplash ▶ See <i>Surface Materials</i> , page 681.

Specification Information

Dimensions		Style Number	U.S. Prices				
D	W		Price Group A	Price Group B	Price Group C	Price Group D	Price Group E

Left-Hand Sidesplash

21"	4"	HXWS424LS	\$139	\$150	\$155	\$172	\$192
:	:	:	:	:	:	:	:

Right-Hand Sidesplash

21"	4"	HXWS424RS	\$139	\$150	\$155	\$172	\$192
:	:	:	:	:	:	:	:



 **For Canadian Pricing**
Multiply U.S. Price by the
Canadian price factor.
▶ See page 1 for details.

Folio Desk Frames

For Use with Common Tops

Standard Includes		Required to Specify
<ul style="list-style-type: none"> ▶ Need help? Product details, page 184 	<ul style="list-style-type: none"> • Desk frame without back panel, if selected: melamine • Desk frame, back panel, and side panel, if selected: melamine • Door, if selected: melamine • D pull, if door option selected: nickel only • Euro hinge, if door option selected: nickel only 	<ol style="list-style-type: none"> 1 Style number 2 Laminate color number for desk frame, and back panel 3 Options, if selected (see below) <ul style="list-style-type: none"> ▶ See <i>Surface Materials</i>, page 681.

Tip: If door option is selected, door color will default to match desk frame.

Tip: When door option is specified, a garage application is created.

Tip: Door pulls may only be specified when door option has been specified.

Tip: Five-knuckle hinge may only be specified when door option has been specified.

Options	U.S. Price	Required to Specify
Door		
• Left hand door for use on 24"W desk frame with back panel only	+\$104	Specify with left hand door.
• Right hand door for use on 24"W desk frame with back panel only	+\$104	Specify with right hand door.
• Double doors for use on 30"W and 36"W desk frame with back panel only	+\$208	Specify with double doors.
Door Pulls		
• Contemporary: nickel only	No cost	Specify with contemporary pull.
• Opus: champagne only	+\$ 12 per pull	Specify with Opus pull.
• Jazz: nickel only	+\$ 17 per pull	Specify with jazz pull.
Five-Knuckle Hinges		
• For desk frames with one door: nickel only	+\$ 15	Specify with five-knuckle hinge.
• For desk frames with double doors: nickel only	+\$ 30	Specify with five-knuckle hinge.
Related Products		<ul style="list-style-type: none"> ▶ Page 202 ▶ Page 206 ▶ Page 192 ▶ Page 216

Specification Information

Dimensions			Style	U.S.
D	W	H	Number	Base Price
:	:	:	:	:

Desk Frames without Back Panel for use with Common Top

22 ¹ / ₈ "	12"	2 ⁵ / ₈ "	HXDF1224	\$149
22 ¹ / ₈ "	18"	2 ⁵ / ₈ "	HXDF1824	\$153
22 ¹ / ₈ "	24"	2 ⁵ / ₈ "	HXDF2424	\$157
22 ¹ / ₈ "	30"	2 ⁵ / ₈ "	HXDF3024	\$161
22 ¹ / ₈ "	36"	2 ⁵ / ₈ "	HXDF3624	\$166
22 ¹ / ₈ "	42"	2 ⁵ / ₈ "	HXDF4224	\$172
22 ¹ / ₈ "	48"	2 ⁵ / ₈ "	HXDF4824	\$177
22 ¹ / ₈ "	54"	2 ⁵ / ₈ "	HXDF5424	\$182
22 ¹ / ₈ "	60"	2 ⁵ / ₈ "	HXDF6024	\$187
22 ¹ / ₈ "	72"	2 ⁵ / ₈ "	HXDF7224	\$192
:	:	:	:	:

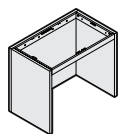
Desk Frames with Back Panel for use with Common Top

22 ¹ / ₈ "	24"	35"	HXDFB2424	\$626
22 ¹ / ₈ "	30"	35"	HXDFB3024	\$645
22 ¹ / ₈ "	36"	35"	HXDFB3624	\$664
:	:	:	:	:



Tip: Desk frames must be attached to adjacent 24"D cabinet or structural wall.

Tip: Desk frames must be attached to worksurface. Specify worksurfaces separately.



Storage Shelves

Standard Includes	Required to Specify
<ul style="list-style-type: none"> ▶ Need help? Product details, page 186 • Shelves: melamine • Edges: matching 3 mm plastic on fronts and matching 1mm plastic on sides and back • Shelf pins 	<ul style="list-style-type: none"> 1 Style number 2 Laminate color number for shelf ▶ See <i>Surface Materials</i>, page 681.

Specification Information		
Dimensions	Style	U.S.
D W	Number	Price



Tip: For use with base cabinets only.

Shelves for Base Cabinets

24"	12"	HXBS1224	\$44
24"	18"	HXBS1824	\$50
24"	21"	HXBS2124	\$53
24"	24"	HXBS2424	\$56
24"	30"	HXBS3024	\$61
24"	36"	HXBS3624	\$67



Tip: For use with storage cabinets only.

Shelves for Storage Cabinets

24"	12"	HXCS1224	\$55
24"	18"	HXCS1824	\$63
24"	21"	HXCS2124	\$68
24"	24"	HXCS2424	\$71
24"	30"	HXCS3024	\$79
24"	36"	HXCS3624	\$85



Tip: For use with bookcases only.

Shelves for Bookcases

14"	12"	HXCBS1214	\$46
14"	18"	HXCBS1814	\$53
14"	21"	HXCBS2114	\$56
14"	24"	HXCBS2414	\$59
14"	30"	HXCBS3014	\$66
14"	36"	HXCBS3614	\$71



Tip: For use with upper storage cabinets only.

Shelves for Upper Storage Cabinets

14"	12"	HXUS1214	\$46
14"	18"	HXUS1814	\$53
14"	21"	HXUS2114	\$56
14"	24"	HXUS2414	\$59
14"	30"	HXUS3014	\$66
14"	36"	HXUS3614	\$71



For Canadian Pricing
Multiply U.S. Price by the Canadian price factor.
▶ See page 1 for details.

Fillers

Tip: Fillers close the gap between a cabinet and structural wall. Field cutting of filler may be required to achieve architectural fit.



Standard Includes	Required to Specify
-------------------	---------------------

- | | | |
|--|--|---|
| <ul style="list-style-type: none"> ▶ Need help? Product details, page 186 | <ul style="list-style-type: none"> • Filler: melamine | <ul style="list-style-type: none"> 1 Style number 2 Laminate color number for filler ▶ See <i>Surface Materials</i>, page 681. |
|--|--|---|

Specification Information			
• Dimensions		• Style	• U.S.
W	H	Number	Price

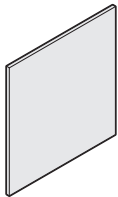
Fillers for use with Base or Sink Cabinets

6"	27 ⁷ / ₁₆ "	HXFB628	\$85
6"	32"	HXFB633	\$85
6"	35"	HXFB636	\$85
⋮	⋮	⋮	⋮

Fillers for use with Upper Storage Cabinets

6"	24"	HXFU624	\$85
6"	29"	HXFU629	\$85
6"	30"	HXFU630	\$85
6"	35"	HXFU635	\$85
⋮	⋮	⋮	⋮

Mounting Board



Standard Includes	Required to Specify
-------------------	---------------------

- | | | |
|--|---|---|
| <ul style="list-style-type: none"> ▶ Need help? Product details, page 186 | <ul style="list-style-type: none"> • Mounting board: melamine • Edges: matching 1 mm plastic • Attachment hardware | <ul style="list-style-type: none"> 1 Style number 2 Laminate color number for mounting board 3 Options, if selected (see below) ▶ See <i>Surface Materials</i>, page 681. |
|--|---|---|

Options	U.S. Price	Required to Specify
---------	------------	---------------------

- | | | |
|---|------------------|--|
| Surface Materials <ul style="list-style-type: none"> • Laminate • Open Line laminate | No cost
+\$21 | <ul style="list-style-type: none"> ▶ See <i>Surface Materials</i>, page 681. ▶ See <i>Surface Materials</i>, page 681. |
|---|------------------|--|

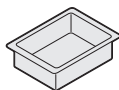
Specification Information			
• Dimensions		• Style	• U.S.
W	H	Number	Base Price

34"	36"	HXAB3436	\$125
⋮	⋮	⋮	⋮



For Canadian Pricing
Multiply U.S. Price by the Canadian price factor.
▶ See page 1 for details.

Plastic Drawer Liners

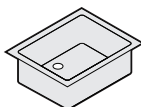


Standard Includes	Required to Specify
<ul style="list-style-type: none"> ▶ Need help? Product details, page 187 • Package of four plastic drawer liners: white only 	Style number

Specification Information

Width	Style Number	U.S. Price
12"	HXADL12	\$119
18"	HXADL18	\$119
21"	HXADL21	\$119
24"	HXADL24	\$133
30"	HXADL30	\$133
36"	HXADL36	\$133

Stainless Steel Sinks



Tip: Sinks can be purchased through Lab Crafters (lab-crafters.com) or any other external vendor.

Standard Includes	Required to Specify
<ul style="list-style-type: none"> ▶ Need help? Product details, page 187 • Sink • Crumb cup strainer • Undermount sink, if selected, includes the sink supports 	Style number

Specification Information

Dimensions			Style Number
D	W	H	Number

Drop-in Stainless Steel Topmount Sinks

14"	18"	7½"	S-1721-A-GR-KIT
14"	14"	10½"	SX-1717-A-GR-KIT
14"	16"	10½"	SX-1719-A-GR-KIT

ADA Compliant Stainless Steel Drop-in Sink

14"	18"	5"	S-ADA-1721-A-GR-KIT
-----	-----	----	----------------------------

Undermount Stainless Steel Sinks

14"	18"	7½"	US-1620-A-KIT
14"	14"	10½"	USX-1616-A-KIT
14"	16"	10½"	USX-1618-A-KIT

ADA Compliant Stainless Steel Undermount Sink

14"	18"	5"	US-ADA-1620-A-KIT
-----	-----	----	--------------------------



For Canadian Pricing
Multiply U.S. Price by the Canadian price factor.
▶ See page 1 for details.

Surface Materials

Nurture Surface Materials	682
Color Availability Matrix for Nurture Caseloads	684
Color Availability Matrix for Nurture Seating and Tables	686
Recommended Worksurface Edge Finishes	690
Steelcase Seating Surface Materials	691
Steelcase Wood Seating Surface Materials	692
Turnstone Seating Surface Materials	693
Visual Worktools Surface Materials	694
Upholstery and Color Numbers	696
Nurture Graded-In Programs	
Acrylic Panel	698
Solid Surface	698
Upholstery	699
Fabric Application Direction Guidelines	702

Nurture Surface Materials

This listing includes all the surface material choices that are available for the Nurture products in this specification guide.

Resources

For more information about Nurture surface materials or to get surface material samples, contact Nurture at 1.800.342.8562.

Materials and colors are not available on every product. Refer to the Color Availability Matrices before specifying.

Plastisol/Urethane

6059 Sterling Dark
6161 Graphite
6162 Taupe
6205 Black

Paint

4750 Champagne Metallic
4798 Sterling
4799 Platinum Metallic
4851 Wheat
4853 Cream
4854 Graphite
4855 Silver
7207 Black
7225 Sand
7237 Slate
7238 Fieldstone
7239 Midnight
7241 Arctic White
7243 Seagull

Metal

Polished Chrome
Brushed Stainless Steel
Nickel Steel

Wood

Veneer

3402 Clear Cherry
3412 Natural Cherry **E**
3416 Light Cherry (W-15)
3422 Medium Cherry
3456 Clear on Ash
3457 Almond on Ash
3458 Samba on Ash
3459 Cognac on Ash
3460 Dark Rum on Ash
3461 Shiraz on Ash
3462 Flamenco on Ash
3522 Clear Maple
3572 Amber Maple
3575 Sugarloaf Maple
3576 Almond Cherry
3577 Samba Cherry
3578 Cognac Cherry
3579 Dark Rum Cherry
3580 Shiraz Cherry
3581 Flamenco Cherry
3592 Blonde on Maple
3602 Desert Oak
3620 English Oak (W-20)
3730 Mahogany (W-45)
3772 Medium Mahogany on Walnut
3970 Ebony (W-60)

Laminate

Laminate

2570 Sugarloaf Maple
2571 Almond Cherry
2572 Samba Cherry
2573 Cognac Cherry
2574 Dark Rum Cherry
2575 Shiraz Cherry
2576 Flamenco Cherry

Steelcase High-Pressure Laminate

Applies to:

- Cura Tables
- Exchange Tables
- Folio Worksurfaces
- Malibu Tables
- Neighbor Tables
- Progeny Tables
- Rave Tables
- Sieste Tables
- Sine Tables
- Sonata Tops
- Sync

Fiber Laminate

2850 Vanadium Fiber
2851 Rhyme Fiber
2852 Tungsten Fiber
2854 Vellum Fiber
2859 Novell Fiber
2860 Granite Fiber
2861 Coconut Fiber
2862 Stucco Fiber

Micro Laminate

2920 Marl Micro
2921 Gypsum Micro
2922 Clay Micro
2923 Shadow Micro

Patina Laminate

2870 Blonde Bronze Patina
2871 Blackened Bronze Patina
2873 Instant Iron Patina

Solid Laminate

2722 Cream **E**
2730 Arctic White
2746 Black
2759 Warm White **E**
2766 Warm Brown V1
2782 Grey V1
2811 Mist **E**
2883 Seagull
2884 Milk
2885 Dune

Speckle Laminate

2820 Coffee Speckle
2822 Woodrose Speckle
2823 Driftwood Speckle
2824 Smoke Speckle
2825 Vanadium Speckle

Woodgrain Laminate

2409 Clear Maple
2410 Graphite Walnut
2412 Natural Cherry
2422 Medium Cherry
2511 Winter on Maple
2538 Clear Walnut
2539 Warm Oak
2592 Blonde on Maple
2714 Natural Walnut
2772 Medium Mahogany on Walnut **E**

Turnstone Laminate Collection

A selection of laminates and edge bands in this collection are available on Steelcase brand products. This collection is available with standard leadtimes and supported like standard laminates to help make ordering easy. Please see the Turnstone section of in2.steelcase.com for swatching information.

2535 Virginia Walnut
2536 Blackwood
2612 Marbled Maple
2614 Chocolate Walnut
2615 Marbled Cherry

Open Line Laminate (OLL)

Open Line laminates are available at an additional \$64 (U.S.) per surface, plus the cost of the laminate.

Example:

4' x 8' sheet = 32 square feet
32 square feet x \$1.10 = \$35.20 (U.S.) per sheet
Laminate costs vary by supplier. The cost of the laminate will be added to your invoice as a separate line on the acknowledgement.

Applies to:

- Exchange tables
- Folio Laminate worksurfaces
- Opus
- Sonata
- Jenny
- Sync

This service allows you to order non-standard laminate at an additional fee per unit. See the specification pages for upcharge information.

When processing orders for Open Line Laminate on Opus or Sonata, specify 2902 in the laminate finish field and enter the OLL manufacturer information.

Edge bands must also be specified and will incur an \$83 upcharge.

6131 White
6132 Grey
6133 Folkstone
6134 Northsea
6135 Shadow
6136 Nubian Brown
6137 Black

When processing orders for Open Line Laminate on Jenny, Exchange Tables, Folio Laminate Worksurfaces, and Sync, specify 2900 in the laminate finish field and enter the OLL manufacturer information.

Edge bands must also be specified using the plastic edge band offering.

Thermoform

2030 Arctic White
2031 Seagull
2032 Dune
2065 Sugarloaf Maple
2066 Almond Cherry
2068 Cognac Cherry
2069 Dark Rum Cherry
2070 Shiraz Cherry
2071 Flamenco Cherry
2072 Samba Cherry
6775 Sand

Solid Surface

Applies to:

- Folio Worksurfaces
- Leela
- Senza
- Sonata
- Sync
- Tava

Price Group A

2975 Bisque

Price Group B

2973 Linen

Price Group C

2972 Antarctica
2974 Canvas

E = Established

Plastic Edge Band

- 6013 Sugarloaf Maple
- 6014 Almond Cherry
- 6021 Samba Cherry
- 6022 Cognac Cherry
- 6023 Dark Rum Cherry
- 6024 Shiraz Cherry
- 6025 Flamenco Cherry

Applies to:

- Cura tables
- Exchange tables
- Folio Worksurfaces
- Sync

- 6000 Black
- 6001 Coffee
- 6034 Natural Cherry
- 6036 Medium Cherry
- 6037 Winter on Maple
- 6038 Blonde on Maple
- 6041 Natural Walnut
- 6052 Milk
- 6053 Seagull
- 6231 Graphite Walnut
- 6237 Clear Maple
- 6242 Virginia Walnut
- 6243 Blackwood
- 6245 Clear Walnut
- 6246 Warm Oak
- 6249 Platinum Solid
- 6615 Grey Value 5
- 6619 Ice **E**
- 6631 Cream
- 6635 Dawn **E**
- 6636 Mist
- 6654 Sand
- 6655 Warm White
- 6676 Marbled Maple
- 6677 Chocolate Walnut
- 6678 Marbled Cherry
- 6694 Slate
- 6695 Midnight
- 6697 Fog

Fusion

Applies to:

- Sonata island modules

Price Group 1

- 6526 Mulberry Tissue

Price Group 3

- 6523 Desert Stalk

Price Group 4

- 6525 Sheer Leaf Medium

Soft Pulls

- 6000 Black

E = Established

Markerboard

Applies to:

- Opus wardrobe cabinet with sliding door only
- White

Urethane

Applies to:

- Verge seat
- 6688 Non metallic steel

CuraNet

Applies to:

- Cura
- 5081 Ash (Silver Grey)
5083 Lily Pad (Moss)
5085 Ebony (Black)
5086 Camel
5087 Cocoa
5088 Aquamarine

Promessa

Applies to:

- Cura
- UL81 Ash
UL83 Lily Pad
UL85 Ebony
UL86 Camel
UL87 Cocoa
UL88 Aquamarine

Upholstery

- ▶ See page 696 for a complete listing of upholstery colors and numbers

California 133 Option

Nurture offers Fire Code Seating Modifications (FCS) on nearly all seating models. The most rigorous fire codes in the nation have been developed in California, and the Steelcase FCS modification is designed to meet those codes. Fire Code Seating (FCS) indicates that a product is constructed to meet the strict fire code requirements of high public occupancy areas such as hospitals, theaters, meeting rooms, and lobbies. The FCS standards will meet both the State of California Home Furnishings Technical Bulletin 133 (CAL TB 133) and Boston Fire Code (BFC). Boston adopted the California Home Furnishing Technical Bulletin CAL TB 133 test standard in 1992.

CAL 133 is specified using an "F" suffix. When an "F" suffix is available, it means that these models have been tested and certified using approved fabrics. A complete list of approved fabrics are listed on the COM website at www.Steelcase.com

If a specific chair/fabric combination has not been tested, an actual burn test can be performed on the product in the specified fabric. The cost of the test is \$700 (net). Please allow a minimum of six weeks for the production of the chair and the completion of the test.

Color Availability Matrix for Nurture Casegoods

Legend

- = Not available
- = Available
- = Available with exceptions
- ▶ See specification pages for details.

		Veneer							Laminate								Solid Surface					
		3575	3576	3577	3578	3579	3580	3581	2570	2571	2572	2573	2574	2575	2576	2730	2883	2885	2972	2973	2974	2975
		Sugarloaf Maple	Almond Cherry	Samba Cherry	Cognac Cherry	Dark Rum Cherry	Shiraz Cherry	Flamenco Cherry	Sugarloaf Maple	Almond Cherry	Samba Cherry	Cognac Cherry	Dark Rum Cherry	Shiraz Cherry	Flamenco Cherry	Arctic White	Seagull	Dune	Antarctica	Linen	Canvas	Bisque
Ainsley		■	■	■	■	■	■	■	■	■	■	■	■	■	■	•	•	•	•	•	•	•
Davenport		•	•	•	•	•	•	•	■	■	■	■	■	■	■	•	•	•	•	•	•	•
Exchange Table	Base	•	•	•	•	•	•	•	•	•	•	•	•	•	•	•	•	•	•	•	•	•
	Table Top*	•	•	•	•	•	•	•	■	■	■	■	■	■	■	■	■	■	•	•	•	•
Folio	Cabinets	•	•	•	•	•	•	•	■	■	■	■	■	■	■	■	■	■	•	•	•	•
	Laminate Worksurfaces*	•	•	•	•	•	•	•	■	■	■	■	■	■	■	■	■	■	•	•	•	•
	Solid Surface Worksurfaces	•	•	•	•	•	•	•	•	•	•	•	•	•	•	•	•	•	■	■	■	■
Opus	Cabinets	•	•	•	•	•	•	•	■	■	■	■	■	■	■	•	•	•	•	•	•	•
	Door pulls, table rails, and coat hooks	•	•	•	•	•	•	•	•	•	•	•	•	•	•	•	•	•	•	•	•	•
Park		•	•	•	•	•	•	•	■	■	■	■	■	■	■	■	■	■	•	•	•	•
Senza		■	■	■	■	■	■	■	■	■	■	■	■	■	■	•	•	•	■	■	■	■
Sonata*	Cabinets	•	•	•	•	•	•	•	■	■	■	■	■	■	■	•	•	•	■	■	■	■
	Rails, drawer/door pulls, and coat hooks	•	•	•	•	•	•	•	•	•	•	•	•	•	•	•	•	•	•	•	•	•
Sync*		•	•	•	•	•	•	•	■	■	■	■	■	■	■	■	■	■	■	■	■	■
Viridian		•	•	•	•	•	•	•	•	•	•	•	•	•	•	•	•	•	•	•	•	•
Waldorf		■	■	■	■	■	■	■	•	•	•	•	•	•	•	•	•	•	•	•	•	•
Overbed Tables		•	•	•	•	•	•	•	■	■	■	■	■	■	■	•	•	•	•	•	•	•
Headboards/Footboards		■	■	■	■	■	■	■	■	■	■	■	■	■	■	•	•	•	•	•	•	•

*Exchange table tops, Folio worksurfaces, Sonata tops, and Sync table tops are available in all Steelcase laminates.

▶ See page 691

Thermoform	
2030	Arctic White
2031	Seagull
2032	Dune
2065	Sugarloaf Maple
2066	Almond Cherry
2068	Cognac Cherry
2069	Dark Rum Cherry
2070	Shiraz Cherry
2071	Flamenco Cherry
2072	Samba Cherry
Fusion	
6523	Desert Stalk
6525	Sheer Leaf Medium
6526	Creamsicle
Paint	
4750	Champagne
4798	Sterling
4799	Platinum
7207	Black

Color Availability Matrix for Nurture Seating and Tables

Legend

- = Not available
- = Available
- = Available with exceptions
- ▶ See specification pages for details.

		Veneer																									
		3402	3412	3416	3422	3456	3457	3458	3459	3460	3461	3462	3522	3572	3575	3576	3577	3578	3579	3580	3581	3592	3602	3620	3730	3772	3970
		Clear Cherry	Natural Cherry ^E	Light Cherry (W-15)	Medium Cherry	Clear on Ash	Almond on Ash	Samba on Ash	Cognac on Ash	Dark Rum on Ash	Shiraz on Ash	Flamenco on Ash	Clear Maple	Amber Maple	Sugarloaf Maple	Almond Cherry	Samba Cherry	Cognac Cherry	Dark Rum Cherry	Shiraz Cherry	Flamenco Cherry	Blonde on Maple	Desert Oak	English Oak (W-20)	Mahogany (W-45)	Medium Mahogany on Walnut	Ebony (W-60)
Amaris	Legs	•	•	•	•	•	•	•	•	•	•	•	•	•	•	•	•	•	•	•	•	•	•	•	•	•	•
	Arm Caps	•	•	•	•	•	•	•	•	•	•	•	•	•	•	•	•	•	•	•	•	•	•	•	•	•	•
Asana		•	•	•	•	•	•	•	•	•	•	•	•	•	•	•	•	•	•	•	•	•	•	•	•	•	•
Aspekt	Seating Frame	•	•	•	•	•	•	•	•	•	•	•	•	•	•	•	•	•	•	•	•	•	•	•	•	•	•
	Arm Caps	•	•	•	•	•	•	•	•	•	•	•	•	•	•	•	•	•	•	•	•	•	•	•	•	•	•
	Table Legs	•	•	•	•	•	•	•	•	•	•	•	•	•	•	•	•	•	•	•	•	•	•	•	•	•	•
	Table Top	•	•	•	•	•	•	•	•	•	•	•	•	•	•	•	•	•	•	•	•	•	•	•	•	•	•
Cura	Arm Caps	•	•	•	•	•	•	•	•	•	•	•	•	•	•	•	•	•	•	•	•	•	•	•	•	•	•
	Frame	•	•	•	•	•	•	•	•	•	•	•	•	•	•	•	•	•	•	•	•	•	•	•	•	•	•
	Table Top*	•	•	•	•	•	•	•	•	•	•	•	•	•	•	•	•	•	•	•	•	•	•	•	•	•	•
Cypress		•	•	•	•	•	•	•	•	•	•	•	•	•	•	•	•	•	•	•	•	•	•	•	•	•	•
Empress	Lounge Frame	•	•	•	•	•	•	•	•	•	•	•	•	•	•	•	•	•	•	•	•	•	•	•	•	•	•
	Lounge Arm Caps	•	•	•	•	•	•	•	•	•	•	•	•	•	•	•	•	•	•	•	•	•	•	•	•	•	•
Flex Back		•	•	•	•	•	•	•	•	•	•	•	•	•	•	•	•	•	•	•	•	•	•	•	•	•	•
Flute		•	•	•	•	•	•	•	•	•	•	•	•	•	•	•	•	•	•	•	•	•	•	•	•	•	•
Hawthorne	Seating	•	•	•	•	•	•	•	•	•	•	•	•	•	•	•	•	•	•	•	•	•	•	•	•	•	•
Jarrah	Side Trim Panel	•	•	•	•	•	•	•	•	•	•	•	•	•	•	•	•	•	•	•	•	•	•	•	•	•	•
	Seating Legs	•	•	•	•	•	•	•	•	•	•	•	•	•	•	•	•	•	•	•	•	•	•	•	•	•	•
	Arm Caps	•	•	•	•	•	•	•	•	•	•	•	•	•	•	•	•	•	•	•	•	•	•	•	•	•	•
Leela	Arm Caps	•	•	•	•	•	•	•	•	•	•	•	•	•	•	•	•	•	•	•	•	•	•	•	•	•	•
	Legs	•	•	•	•	•	•	•	•	•	•	•	•	•	•	•	•	•	•	•	•	•	•	•	•	•	•
	Table Top	•	•	•	•	•	•	•	•	•	•	•	•	•	•	•	•	•	•	•	•	•	•	•	•	•	•
Linden	Seating Base	•	•	•	•	•	•	•	•	•	•	•	•	•	•	•	•	•	•	•	•	•	•	•	•	•	•
	Arm Caps	•	•	•	•	•	•	•	•	•	•	•	•	•	•	•	•	•	•	•	•	•	•	•	•	•	•
Loria		•	•	•	•	•	•	•	•	•	•	•	•	•	•	•	•	•	•	•	•	•	•	•	•	•	•
Kami		•	•	•	•	•	•	•	•	•	•	•	•	•	•	•	•	•	•	•	•	•	•	•	•	•	•
Malibu	Seating	■	■	■	■	•	•	•	•	•	•	•	•	•	•	•	•	•	•	•	•	•	•	•	•	•	•
	Tables*	■	■	■	■	•	•	•	•	•	•	•	•	•	•	•	•	•	•	•	•	•	•	•	•	•	•
Malibu Too		■	■	■	■	•	•	•	•	•	•	•	•	•	•	•	•	•	•	•	•	•	•	•	•	•	•
Mineral	Arm Caps	•	•	•	•	•	•	•	•	•	•	•	•	•	•	•	•	•	•	•	•	•	•	•	•	•	•
Mitra	Seating Frame	•	•	•	•	•	•	•	•	•	•	•	•	•	•	•	•	•	•	•	•	•	•	•	•	•	•
	Arm Caps	•	•	•	•	•	•	•	•	•	•	•	•	•	•	•	•	•	•	•	•	•	•	•	•	•	•
	Table Legs and Bases	•	•	•	•	•	•	•	•	•	•	•	•	•	•	•	•	•	•	•	•	•	•	•	•	•	•
	Table Top	•	•	•	•	•	•	•	•	•	•	•	•	•	•	•	•	•	•	•	•	•	•	•	•	•	•

^E = Established

* Also available in Steelcase Laminates.

▶ See page 691

Color Availability Matrix for Nurture Seating and Tables, continued

Legend

- = Not available
- = Available
- = Available with exceptions
- ▶ See specification pages for details.

		Veneer	3402	3412	3416	3422	3456	3457	3458	3459	3460	3461	3462	3522	3572	3575	3576	3577	3578	3579	3580	3581	3592	3602	3620	3730	3772	3970
			Clear Cherry	Natural Cherry ^E	Light Cherry (W-15)	Medium Cherry	Clear on Ash	Almond on Ash	Samba on Ash	Cognac on Ash	Dark Rum on Ash	Shiraz on Ash	Flamenco on Ash	Clear Maple	Amber Maple	Sugarloaf Maple	Almond Cherry	Samba Cherry	Cognac Cherry	Dark Rum Cherry	Shiraz Cherry	Flamenco Cherry	Blonde on Maple	Desert Oak	English Oak (W-20)	Mahogany (W-45)	Medium Mahogany on Walnut	Ebony (W-60)
Neighbor	Frames	•	•	•	•	•	•	•	•	•	•	•	•	•	•	•	•	•	•	•	•	•	•	•	•	•	•	•
	Arm Cap	■	■	■	■	•	•	•	•	•	•	•	•	■	■	■	■	■	■	■	■	■	■	■	■	■	■	■
	Table Top*	■	■	■	■	•	•	•	•	•	•	•	•	■	■	■	■	■	■	■	■	■	■	■	■	■	■	■
Nikko	Seating Frame	•	•	•	•	•	•	•	•	•	•	•	•	•	•	■	■	■	■	■	■	■	•	•	•	•	•	•
	Arm Caps	•	•	•	•	•	•	•	•	•	•	•	•	•	•	■	■	■	■	■	■	■	•	•	•	•	•	•
Orchid		•	•	•	•	•	•	•	•	•	•	•	•	•	•	■	■	■	■	■	■	■	•	•	•	•	•	•
Progeny	Frame	■	■	■	■	•	•	•	•	•	•	•	•	■	■	■	■	■	■	■	■	■	■	■	■	■	■	■
	Arm Cap	■	■	■	■	•	•	•	•	•	•	•	•	■	■	■	■	■	■	■	■	■	■	■	■	■	■	■
	Table Top*	■	■	■	■	•	•	•	•	•	•	•	•	■	■	■	■	■	■	■	■	■	■	■	■	■	■	■
Rave	Arm Caps and Frame	■	■	■	■	•	•	•	•	•	•	•	•	■	■	■	■	■	■	■	■	■	■	■	■	■	■	■
	Tables*	■	■	■	■	•	•	•	•	•	•	•	•	■	■	■	■	■	■	■	■	■	■	■	■	■	■	■
Sequoia	Seating Frame	•	•	•	•	•	•	•	•	•	•	•	•	•	•	■	■	■	■	■	■	■	•	•	•	•	•	•
	Arm Caps	•	•	•	•	•	•	•	•	•	•	•	•	•	•	■	■	■	■	■	■	■	•	•	•	•	•	•
	Table Tops	•	•	•	•	•	•	•	•	•	•	•	•	•	•	•	•	•	•	•	•	•	•	•	•	•	•	•
Sieste	Arm Caps	■	■	■	■	•	•	•	•	•	•	•	•	■	■	■	■	■	■	■	■	■	■	■	■	■	■	■
	Legs	■	■	■	■	•	•	•	•	•	•	•	•	■	■	■	■	■	■	■	■	■	■	■	■	■	■	■
	Table Top*	■	■	■	■	•	•	•	•	•	•	•	•	■	■	■	■	■	■	■	■	■	■	■	■	■	■	■
Sieste Sleeper		■	■	■	■	•	•	•	•	•	•	•	•	■	■	■	■	■	■	■	■	■	■	■	■	■	■	■
Sine	Seating and Table Frame	•	•	•	•	•	•	•	•	•	•	•	•	•	•	•	•	•	•	•	•	•	•	•	•	•	•	•
	Table Top*	•	•	•	•	•	•	•	•	•	•	•	•	•	•	•	•	•	•	•	•	•	•	•	•	•	•	•
Slumber Day Bed		•	•	•	•	•	•	•	•	•	•	•	•	•	•	•	•	•	•	•	•	•	•	•	•	•	•	•
Sorrel	Seating Frame and Arm Caps	•	•	•	•	•	•	•	•	•	•	•	•	•	•	•	•	•	•	•	•	•	•	•	•	•	•	•
	Seating Backs	•	•	•	•	•	•	•	•	•	•	•	•	•	•	■	■	■	■	■	■	■	•	•	•	•	•	•
	Table Legs	•	•	•	•	•	•	•	•	•	•	•	•	•	•	•	•	•	•	•	•	•	•	•	•	•	•	•
	Table Tops	•	•	•	•	•	•	•	•	•	•	•	•	•	•	•	•	•	•	•	•	•	•	•	•	•	•	•
Tava	Arm and Legs	•	•	•	•	■	■	■	■	■	■	■	■	•	•	•	•	•	•	•	•	•	•	•	•	•	•	•
	Bench Body and Table Tops	•	•	•	•	•	•	•	•	•	•	•	•	•	•	•	•	•	•	•	•	•	•	•	•	•	•	•
Traditional Lounge		•	•	•	•	•	•	•	•	•	•	•	•	•	•	■	■	■	■	■	■	■	•	•	•	•	•	•
X-tenz Sleeper	Arm Caps	•	•	•	•	•	•	•	•	•	•	•	•	•	•	■	■	■	■	■	■	■	•	•	•	•	•	•
	Frame	•	•	•	•	•	•	•	•	•	•	•	•	•	•	•	•	•	•	•	•	•	•	•	•	•	•	•
Verge		•	•	•	•	•	•	•	•	•	•	•	•	•	•	•	•	•	•	•	•	•	•	•	•	•	•	•
Freestanding and Interconnecting Tables																												
	Table Top	•	•	•	•	•	•	•	•	•	•	•	•	•	•	•	•	•	•	•	•	•	•	•	•	•	•	•
	Metal Legs	•	•	•	•	•	•	•	•	•	•	•	•	•	•	•	•	•	•	•	•	•	•	•	•	•	•	•
	Wood Legs	•	•	•	•	•	•	•	•	•	•	•	•	•	•	■	■	■	■	■	■	■	•	•	•	•	•	•

^E = Established
 * Also available in Steelcase Laminates.
 ▶ See page 691

Recommended Worksurface Edge Finishes

Recommended Edge Colors

Edges

The recommended edge color will complement the laminate color you specify. Edge color is specified separately.

Steelcase Laminate Color	Recommended 3 mm Edge Color
Fiber	
2850 Vanadium Fiber	6654 Sand
2851 Rhyme Fiber	6631 Cream
2852 Tungsten Fiber	6636 Mist
2854 Vellum Fiber	6655 Warm White
2859 Novell Fiber	6001 Coffee
2860 Granite Fiber	6000 Black
2861 Coconut Fiber	6654 Sand
2862 Stucco Fiber	6053 Seagull
Micro	
2920 Marl Micro	6053 Seagull
2921 Gypsum Micro	6654 Sand
2922 Clay Micro	6654 Sand
2923 Shadow Micro	6249 Platinum Solid
Patina	
2870 Blonde Bronze Patina	6654 Sand
2871 Blackened Bronze Patina	6615 Grey Value 5
2873 Instant Iron Patina	6615 Grey Value 5
Solid	
2722 Cream E	6631 Cream
2730 Arctic White	6697 Fog
2746 Black	6000 Black
2759 Warm White E	6655 Warm White
2811 Mist E	6636 Mist
2883 Seagull	6053 Seagull
2884 Milk	6052 Milk
2885 Dune	6654 Sand
Speckle	
2820 Coffee Speckle	6631 Cream
2822 Woodrose Speckle	6635 Dawn E
2823 Driftwood Speckle	6631 Cream
2824 Smoke Speckle	6636 Mist
2825 Vanadium Speckle	6619 Ice E
Woodgrain	
2409 Clear Maple	6237 Clear Maple
2410 Graphite Walnut	6231 Graphite Walnut
2412 Natural Cherry	6034 Natural Cherry
2422 Medium Cherry	6036 Medium Cherry
2511 Winter on Maple	6037 Winter on Maple
2538 Clear Walnut	6245 Clear Walnut
2539 Warm Oak	6246 Warm Oak
2592 Blonde on Maple	6038 Blonde on Maple
2714 Natural Walnut	6041 Natural Walnut
2772 Medium Mahogany on Walnut E	6045 Medium Mahogany on Walnut E

Nurture Laminate Color	Recommended 3 mm Edge Color
Fiber	
2570 Sugarloaf Maple	6013 Sugarloaf Maple
2571 Almond Cherry	6014 Almond Cherry
2572 Samba Cherry	6021 Samba Cherry
2573 Cognac Cherry	6022 Cognac Cherry
2574 Dark Rum Cherry	6023 Dark Rum Cherry
2575 Shiraz Cherry	6024 Shiraz Cherry
2576 Flamenco Cherry	6025 Flamenco Cherry

E = Established

This listing includes all the surface material choices that are available for the products in this specification guide.

Resources

For more information about surface materials, refer to the following resources:

Additional surface materials specification tools are available to assist you in the specification process—the Surface Materials Binders.

Surface Materials Binders

- Surface Materials Reference Manual
- A complete set of swatch cards for hard surfaces, vertical surface fabrics, and seating upholstery

Materials and colors are not available on every product. Refer to the Color Availability and Upholstery Matrices before specifying.

Plastic

- 6009 Arctic White
- 6059 Sterling Dark Solid
- 6205 Black
- 6206 Burgundy
- 6249 Platinum Solid
- 6250 Coffee
- 6256 Graphite
- 6259 Midnight
- 6268 Navy
- 6296 Sterling
- 6301 Aegean
- 6302 Baltic
- 6303 Pomegranate
- 6332 Citron
- 6333 Picasso
- 6334 Flash
- 6335 Wasabi
- 6336 Jazz
- 6337 Element
- 6338 Chili

Seating Coating

- 7000 Black
- 7005 Coffee
- 7011 Graphite

Paint

- 0835 Black
- 4799 Platinum Metallic
- 7239 Midnight

E = Established

Metal

- 8046 Polished Aluminum
- 9201 Polished Chrome

Laminate

- 2406 Clear Cherry
- 2409 Clear Maple
- 2410 Graphite Walnut
- 2412 Natural Cherry
- 2422 Medium Cherry
- 2511 Winter on Maple
- 2538 Clear Walnut
- 2539 Warm Oak
- 2714 Natural Walnut
- 2722 Cream
- 2730 Arctic White
- 2746 Black
- 2759 Warm White
- 2772 Medium Mahogany on Walnut **E**
- 2811 Mist
- 2883 Seagull
- 2884 Milk
- 2885 Dune

Elmosoft Leather

- L110 Maritime Blue
- L111 Midnight Blue
- L112 Ebony
- L113 Gunmetal
- L114 Mica
- L115 Dove Grey
- L116 Plum Pleasure
- L122 Truffle
- L128 Red Birch
- L132 Violet
- L133 Espresso
- L134 Ruby
- L135 Scarlet
- L136 Claret
- L137 Cabernet
- L138 Bourbon
- L139 Cinder
- L140 Garnet
- L143 Pecan
- L144 Chamois
- L145 Palomino
- L146 Russet
- L147 Saddle
- L148 Goldstone
- L150 Ivory
- L151 White
- L709 Sugar
- L710 Lava
- L711 Parchment
- L712 Buff
- L713 Sand
- L714 Maize
- L715 Camel
- L716 Khaki
- L717 Cameo
- L718 Mushroom
- L719 Taupe
- L720 Fawn
- L721 Rock
- L722 Desert
- L723 Storm
- L724 Mist
- L725 Teal
- L726 Celadon
- L727 Egyptian Blue
- L728 Bright Blue
- L729 Aquarium
- L730 Hunter
- L731 Fern
- L732 Edamame
- L733 Moss
- L734 Key Lime
- L735 Creamsicle
- L736 Lemon
- L737 Sunshine
- L738 Drama
- L739 Byzantium
- L740 Dazzle
- L741 Fuchsia
- L742 Flamingo

3D Knit

- 5064 Licorice
- 5065 Coconut
- 5066 Malt
- 5067 Root Beer
- 5090 Wasabi
- 5091 Maya Blue
- 5092 Graphite
- 5093 Nickel
- 5094 Tangerine
- 5095 Scarlet
- 5096 Turmeric
- 5097 Concord
- 5098 Blue Jay
- 5099 Basil

Upholstery

▶ See page 696 for a complete listing of upholstery colors and numbers.

▶ Check the COM database for specific product and fabric approvals.

Steelcase Wood Seating Surface Materials

This listing includes all the surface material choices that are available for the Steelcase Wood Seating products in this specification guide.

Resources

For more information about surface materials, refer to the following resources:

Additional surface materials specification tools are available to assist you in the specification process—the Surface Materials Binders.

Surface Materials Binders

- include:
- Surface Materials Reference Manual
 - A complete set of swatch cards for hard surfaces, vertical surface fabrics, and seating upholstery

Metal

- 4798 Sterling Metallic
- 7026 Nickel
- 7207 Black
- 8046 Polished Aluminum
- 9201 Polished Chrome

Paint

- 0835 Black
- 4799 Platinum Metallic
- 7207 Black

Wood

▶ See *Color Availability Matrix for Wood Seating in Surface Materials Reference Manual for color availability by product line.*

Tip: The wood used in the construction of chairs is either maple or European beech. Wood finishes applied to maple or beech will match the color of stains applied to oak, walnut, or cherry, but will not have the same natural grain.

- 3062 Graphite Walnut
- 3402 Clear Cherry (Aged)
- 3412 Natural Cherry **E**
- 3422 Medium Cherry
- 3522 Clear Maple*
- 3572 Amber on Maple
- 3592 Blonde on Maple
- 3602 Desert Oak
- 3612 Warm Oak
- 3692 Espresso Oak
- 3702 Clear Walnut
- 3712 Natural Walnut
- 3722 Dark Mahogany on Walnut
- 3752 Medium Walnut
- 3762 Dark Walnut
- 3772 Medium Mahogany on Walnut

**To ensure an understanding of the color ranges and characteristic variations of natural veneer, a sign-off sheet is required prior to orders being accepted for this clear-coat finish. The sign-off sheet is available through Steelcase advertising stock. Form number 05-0001370.*

Customiz stain is a service that allows you to create your own stain color. Minimum order quantities, per unit up-charges, and a one-time customer processing fee apply.

▶ See the *Surface Materials Reference Manual* for more information.

Upholstery

▶ See page 696 for a complete listing of upholstery colors and numbers.

▶ Check the COM database for specific product and fabric approvals.

E = Established

► For Surface Materials matrices for all Turnstone product lines, see *Surface Materials Reference Manual*.

Paint

Applies to:

- Scoop
- 4799 Platinum Metallic
- 7207 Black

Applies to:

- Jenny tablet arm
- 7207 Black

Plastic

Applies to:

- Jenny tablet arm
- Jenny end table
- Jenny coffee table
- 6205 Black

Applies to:

- Scoop
- 6618 White
- 6682 Cobblestone

Applies to:

- Jenny end table edge band
- Jenny coffee table edge band
- 6000 Black
- 6009 Arctic White
- 6034 Natural Cherry **E**
- 6037 Winter on Maple
- 6053 Seagull
- 6234 Clear Cherry
- 6242 Virginia Walnut
- 6243 Blackwood
- 6245 Clear Walnut
- 6246 Warm Oak
- 6636 Mist
- 6654 Sand
- 6676 Marbled Maple
- 6677 Chocolate Walnut
- 6678 Marbled Cherry
- 6689 Brushed Silver

Laminate

Low-Pressure Laminate

Applies to:

- Jenny tablet arm
- Jenny end table
- Jenny coffee table
- 247L Black Version 2 LPL
- 25L1 Winter on Maple LPL
- 25L5 Virginia Walnut LPL
- 25L6 Blackwood LPL
- 25L8 Clear Walnut LPL
- 25L9 Warm Oak LPL
- 262L Marbled Maple LPL
- 264L Chocolate Walnut LPL
- 267L Marbled Cherry Version 2 LPL
- 26L1 Natural Cherry Version 2 LPL
- 2L03 Brushed Silver LPL
- 2L30 Arctic White LPL
- 2L50 Vanadium Fiber LPL
- 2L52 Tungsten Fiber LPL
- 2L83 Seagull LPL
- 2L85 Dune LPL

High-Pressure Laminate

Applies to:

- Jenny tablet arm
- Jenny end table
- Jenny coffee table
- 2406 Clear Cherry
- 2412 Natural Cherry Version 2 HPL
- 2503 Brushed Silver HPL
- 2511 Winter on Maple HPL
- 2535 Virginia Walnut HPL
- 2536 Blackwood HPL
- 2538 Clear Walnut HPL
- 2539 Warm Oak HPL
- 2612 Marbled Maple HPL
- 2614 Chocolate Walnut HPL
- 2615 Marbled Cherry Version 2 HPL
- 2730 Arctic White HPL
- 2746 Black HPL
- 2850 Vanadium Fiber HPL
- 2852 Tungsten Fiber HPL
- 2883 Seagull HPL
- 2885 Dune HPL

Note: Some wood veneer finishes and woodgrain laminates share the same name. Because of the difference in materials, veneers and laminates of the same name are not an exact match but do coordinate with each other.

Wood

Applies to:

- Jenny wood legs
- Jenny wood arm
- 3412 Natural Cherry **E**
- 3522 Clear Maple
- 3762 Dark Walnut

Tip: Due to natural variations in wood, finished products may vary in color, texture and grain.

Turnstone Leather

T802 Black
T803 Port
L305 Brown Leather

Upholstery

► See *Surface Materials Reference Manual* for a complete listing of upholstery colors and numbers.

► Check the COM database for specific product and fabric approvals.

E = Established

Visual Worktools Surface Materials

This listing includes all surface material and/or finish choices applicable to Premium Whiteboards and Tackboards, and Contractor Series. Not all surface material and/or finish choices are available on all products. Please refer to the Finish Matrices.

► For surface materials matrices, see the *Visual Worktools Specification Guide*.

Paint

Price Group 2

- 0835 Black **E**
- 4750 Champagne Metallic
- 4798 Sterling Metallic
- 4799 Platinum Metallic

Metal Paint

Price Group 2

- 8043 Clear Anodized Aluminum
- 8044 Black Anodized Aluminum

Wood

Wood Trim Finishes

The wood finish is an open pore, high gloss finish on maple, cherry, or walnut. Colors match current Steelcase wood finishes in color only and do not match the Steelcase finish in sheen.

- 3412 FC/OP Natural Cherry **E**
- 3422 FC/OP Medium Cherry
- 3572 FC/OP Amber on Maple
- 3592 FC/OP Blonde on Maple
- 3712 FC/OP Natural Walnut on Walnut
- 3772 FC/OP Medium Mahogany on Walnut

Markerboard Surface

Markerboards are standard in white high-gloss 7655 e³ environmental ceramicsteel. Optional screenprint patterns are available to provide a guide for writing or drawing. See below for patterns.

Standard:

- 7655 High Gloss White

Optional Screenprint on e³ environmental ceramicsteel:

- 7656 2" Circular Dot Pattern
- 7657 2" Grid Pattern
- 7658 Music Staff Lines

Vertical Surface Fabric

Fabric Tackboard Surfaces

Tackboard surfaces are available in select Steelcase and Designtex fabrics; pricing for Designtex and Steelcase fabrics is determined by a grading program. All fabrics are applied railroaded, i.e. salvages parallel to floor.

Price Group 1

Abacus **E**

- P122 Entasis
- P123 Portico
- P124 Opus
- P125 Cusp
- P126 Artifact
- P129 Atlas

Bariolage

- G220 Etude
- G221 Andante
- G226 Cantata
- G227 Adagio
- G233 Melody
- G234 Ballata
- G235 Sonata

Designtex Graded-In Program

For additional information and fabric samples, contact your local Designtex sales representative at 1.800.221.1540.

The following fabrics are part of the program formerly known as Designtex Graded-In. These patterns can be ordered through the Select Surfaces order fulfill model.

► See *Surface Materials Reference Manual* for complete Select Surfaces ordering information.

Price Group 2

- Brunswick - 6307
- Solara - 4101

Price Group 3

- Foxtrot - 6375
- Sumo - 6499

Price Group 4

- Rivergrass - 2690

Price Group COM (Customer's Own Material)

Fabric Approval and Yardage

To confirm whether a particular COM material has already been tested for use on a specific Steelcase product or to determine actual yardage requirements:

- Visit www.steelcase.com

For additional information regarding Customer's Own Material, call

1.888.STEELCASE (1.888.783.3522) or send an e-mail to lineone@steelcase.com.

E = Established

Upholstery and Color Numbers

Upholstery

Not all fabrics are available on all products. See the COM database for specific product and fabric availability.

Price Group 1

Buzz2

- 5F01 Camel **E**
- 5F03 Tomato
- 5F04 Red **E**
- 5F05 Burgundy
- 5F06 Sky **E**
- 5F07 Blue
- 5F08 Navy
- 5F10 Grape **E**
- 5F11 Eggplant **E**
- 5F15 Stone
- 5F16 Grey
- 5F17 Black
- 5G50 Dunegrass
- 5G51 Sable
- 5G52 Barley
- 5G53 Sunrise
- 5G54 Carrot
- 5G55 Pumpkin
- 5G56 Timber
- 5G57 Rouge
- 5G58 Chocolate
- 5G59 Meadow
- 5G60 Ivy
- 5G61 Cyan
- 5G62 Atlantic
- 5G63 Crocus
- 5G64 Alpine
- 5G65 Tornado

Jacks

- 5B61 Taupe
- 5B63 Camel
- 5B64 Pewter
- 5B66 Plum
- 5B70 Midnight

Link

- 5A20 Burgundy
- 5A21 Rust
- 5A23 Green
- 5A24 Blue
- 5A25 Navy
- 5A26 Purple
- 5A27 Black
- 5A28 Ocean
- 5A29 Lichen
- 5A30 Chamois

Playground

- 5F28 Claret
- 5F29 Chile
- 5F30 Amber
- 5F31 Nut
- 5F32 Blade
- 5F33 Stone
- 5F34 Sky
- 5F35 Navy
- 5F36 Huckleberry
- 5F37 Charcoal

Seating Vinyl

- 5801 Topaz
- 5805 Foggy Night
- 5809 Black
- 5810 Forest
- 5812 Navy
- 5813 Currant
- 5814 Leaf
- 5815 Seaside
- 5817 Pebble
- 5818 Spice
- 5819 Thistle
- 5820 Coffee
- 5822 Iris

Price Group 2

Cogent: Connect

- 5S15 Coconut
- 5S16 Turmeric
- 5S17 Tangerine
- 5S18 Scarlet
- 5S19 Concord
- 5S20 Maya Blue
- 5S21 Blue Jay
- 5S22 Basil
- 5S23 Wasabi
- 5S24 Nickel
- 5S25 Graphite
- 5S26 Licorice
- 5S27 Malt
- 5S28 Root Beer
- 5S93 Blueprint
- 5S94 Lizard
- 5S95 Sailor
- 5S96 Quicksilver
- 5S97 Nugget
- 5S98 Canary
- 5S99 Lipstick

Cogent: Geode Seating

- 5S46 Bark
- 5S47 Coal
- 5S48 Smoke
- 5S49 Cobalt
- 5S50 Ink
- 5S51 Shamrock
- 5S52 Pear
- 5S53 Berry
- 5S54 Mandarin
- 5S55 Sunset
- 5S56 Citrus
- 5S57 Thunder

Cogent: Geode Vertical

- 5S31 Pebble
- 5S32 Canyon
- 5S33 Honey
- 5S34 Ice
- 5S35 Slate
- 5S36 Cement
- 5S37 Rock
- 5S38 Oyster
- 5S39 Buff
- 5S40 Toast
- 5S41 Sesame
- 5S42 Ecru
- 5S43 Dove

Cogent: Trails

- 5S29 Bronzite
- 5S30 Amethyst
- 5S84 Jasper
- 5S85 Agate
- 5S86 Lapis
- 5S87 Malachite
- 5S88 Quartz
- 5S89 Carnelian
- 5S90 Tiger Eye
- 5S91 Travertine
- 5S92 Topaz

Cricket

- 5A84 Plum
- 5A85 Camel
- 5A86 Charcoal
- 5A87 Black
- 5A90 Currant
- 5A91 Spearmint
- 5A92 Sky
- 5A93 Midnight
- 5A95 Ocean
- 5A96 Forest

Crosswalk

- 5F48 Beech
- 5F49 Moon
- 5F50 Berry
- 5F51 Admiral Blue
- 5F52 Moss
- 5F53 Persimmon
- 5F54 Bittersweet
- 5F55 Midnight
- 5F56 Poppy

Nitelights

- 5F58 Hazelnut
- 5F59 Burgundy
- 5F60 Cherry
- 5F61 Earth
- 5F62 Shore
- 5F63 Moss
- 5F64 Sea
- 5F65 Regal Blue
- 5F66 Stone
- 5F67 Moon

Regis2

- 5F18 Black
- 5F24 Pacific
- 5F26 Cherry
- 5F27 Navy

Spyder

- 5B00 Orchid **E**
- 5B01 Foggy Night **E**
- 5B04 Peri **E**
- 5B05 Merlot **E**
- 5B06 Dove **E**
- 5B07 Sage **E**
- 5B09 Topaz **E**
- 5B11 Currant **E**
- 5B12 Lichen **E**

Zoe2

- 5C90 Eggplant
- 5C91 Aloe
- 5C92 Fiddle
- 5C93 Patina
- 5C94 Peacock
- 5C95 Rain
- 5C96 Grey Flannel
- 5C97 Pebble
- 5C98 Cymbal
- 5C99 Fiesta

Price Group 3

Cogent: Tides

- 5S71 Butter
- 5S72 Snow
- 5S73 Celery
- 5S74 Wicker
- 5S75 Pool
- 5S76 Cloud
- 5S77 Grass
- 5S78 Clay
- 5S79 Hyacinth
- 5S80 Jet
- 5S81 Doe
- 5S82 Boysenberry
- 5S83 Night

Hampstead

- B351 Blue Green V4 **E**
- B359 Blue Blue
Green V5 **E**
- B366 Blue Blue Violet
V4 **E**
- B369 Blue Blue Violet
V5 **E**
- B377 Violet V5
(Low Intensity) **E**
- B389 Red Red
Violet V5 **E**
- B395 Grey V5 **E**
- B399 Black
- B406 Windflower **E**
- B413 Shale **E**
- B423 Clementine
- B424 Butter Cream
- B425 Iris
- B426 Sapphire
- B427 Turquoise
- B428 Navy
- B429 Charcoal
- B430 Spa
- B431 Plum
- B432 Cocoa
- B433 Cork
- B434 Stone
- B435 Metal
- B436 Peridot
- B437 Cactus
- B438 Sycamore
- B439 Candy Apple

Price Group 5

Bo Peep

- 5G66 Pita
- 5G67 Bone
- 5G68 Safari
- 5G69 Brown Sugar
- 5G70 Chocolate Chip
- 5G71 Candlelight
- 5G72 Honey Mustard
- 5G73 Marmalade
- 5G74 Picnic
- 5G75 Pinot
- 5G76 Bloom
- 5G77 Grapevine
- 5G78 Firefly
- 5G79 Artichoke
- 5G80 Serpent
- 5G81 Carolina
- 5G82 Blue Bonnet
- 5G83 Nautical
- 5G84 Gravel
- 5G85 Sharkskin
- 5G86 Kohl

Price Group 6

Brisa

- BR01 Black Onyx
- BR04 Truffle
- BR06 Ash
- BR07 Sage
- BR08 Celery
- BR09 Sterling Blue
- BR10 Night Navy
- BR11 Cambridge Blue
- BR12 Abyss
- BR13 Canyon
- BR14 Pompeian Red
- BR15 Salsa
- BR16 Cinnabar
- BR17 Aztec
- BR18 New Sand
- BR19 Cream
- BR20 White
- BR21 Moccasin
- BR22 Buckskin
- BR23 Prairie

Leather Price Group

- L107 Black
- L202 Dusk
- L203 Bottle
- L207 Mahogany
- L220 Soapstone
- L221 Rocky
- L224 Plum
- L500 Camel
- L503 Navy
- L507 Vineyard

E = Established

**Select Surfaces
Designtex**

For additional information and fabric samples, contact your local Designtex sales representative at 1.800.221.1540.

The following fabrics are part of the program formerly known as Designtex Graded-In. These patterns can be ordered through the Select Surfaces order fulfillment model. These materials are available on Steelcase and Nurture brand products.
▶ See *Surface Materials Reference Manual* for complete Select Surfaces ordering information.

**Price Group 2 -
Finish Code 59DB**

- Bee - 4975
- Ludington - 3285
- Sandpiper - 3313

**Price Group 3 -
Finish Code 59DC**

- Boyne - 3280
- Crossroads - 2895
- Great Lakes - 3282
- Lagoon - 4977
- Prairie - 2552
- Rocket - 2693

**Price Group 4 -
Finish Code 59DD**

- Astrid - 2747
- At Ease - 3309
- Bolzano - 3412
- Bunta - 3360
- Candor - 3306
- Closed Loop - 2550
- Easy Going - 3305
- Free & Easy - 3316
- Glen Arbor - 3283
- Gujarat - 3357
- Introvert - 2879
- Kalanga - 3359
- Leland - 3281
- Matter of Fact - 3356
- Metta - 2681
- No Frills - 3318
- Nonchalant - 3307
- Omar Seating - 2865
- Sari - 3361
- Sarong - 3358
- Saugatuck - 3284
- To The Point - 3308
- Topiary - 2897
- Well Rounded - 3317

**Price Group 5 -
Finish Code 59DE**

- Abex - 2072
- Appleseed - 2682
- Brooch - 2762
- Café - 2789
- Caillou - 2778
- Cascadia - 2733
- Crossover - 2683
- Fonte - 2796
- Halos - 2899
- Kabuki - 2794
- Metaphor - 2877
- Protect - 2852
- Salon - 2797
- Surface - 2787
- Sustain - 2851
- Synchronize - 2876
- Tailored Stripe - 2763
- Terrasse - 2795
- V - 2957

**Price Group 6 -
Finish Code 59DF**

- Acacia - 2843
- Agave - 2847
- Alistair - 2992
- Allure - 2756
- Amaranth w/o Crypton - 2855u
- Amuse - 2767
- Arlington - 2724
- Banda - 3227
- Barnsbury - 2726
- Bottle Bank - 2869
- Cassava - 2838
- Chicory - 2993
- Circolo - 3229
- Converge - 2873
- Copa - 2641
- Coupe - H245
- Dahlia - 2995
- Décor - H244
- Dot to Dot - 2691
- Downtown - 2029
- Epiphany - 2734
- Faconne - 2764
- Friendly Faux w/Knit Backing - 2008
- Griglia - 3231
- Hula Hoop - 3297
- Kenaf - 2859
- Kenaf w/o Crypton - 2859u
- Klange - 2741
- Knockabout - 3326
- Laureate - 2774
- Palace - H254
- Pivot - 3374
- Pueblo - 2844
- Quintessence - 3347
- React - 2861
- Rice - 2858
- Rough & Ready - 2016
- Salvage - 2867
- Seed - 2839
- Senna - 2848
- Sequence - 2742
- Sock Hop - 3298
- Soda Pop - 2868
- Square - 2788
- Swing Set - 2421
- Tangent - 2875
- Tartan - 2994
- Teddy - H236
- Terrain - 2846
- Transpose - 2874
- Tumbleweed - 2845

**Price Group 7 -
Finish Code 59DG**

- Amaranth - 2855
- Baratto - 3266
- Battista - 2718
- Beam - 2785
- Bon Bon - 2749
- Calm - 2768
- Cestino - 3270
- Chakin - 7146
- Coperta - 3228
- Drive-In - 3299
- Dwell - 2850
- Faux Sure w/Knit Backing - 3351
- Flux - 3239
- Fuse w/Knit Backing - 3362
- Garden Key - 3252
- Inertia - 3235
- Juxtaposition - 2744
- Kaleidoscope - 2863
- Lorien - H201
- Minuet - 2656
- Oscillate - 3238
- Point - 2783
- Razor Stripe - 2857
- Samba - 2654
- Samba Otra Vez - 2885
- Spiro - 3237
- Sundance - 3278
- Uptown - 2024
- Yoruba - 3333
- Ziggurat - 2827

**Price Group 8 -
Finish Code 59DH**

- Biba - H216
- Chandelier - 7354
- Circumference - 2884
- Facets - 7350
- Honor Plus - 2547
- Hue - 2710
- Maglia - 3233
- Nexus - 3236
- Polygon - 2883
- Thumbnail Sketch - 2841
- Titanium - 2842
- Torsade - 7358
- Valanka - 3279
- Wire - 2743

**Price Group 9 -
Finish Code 59DJ**

- Bangles - 7352
- Belvedere - 3275
- Gotham - 2390
- Gramercy - 2599
- Hofburg - 3276
- Yorkshire - 2771

**Price Group 10 -
Finish Code 59DK**

- Chalet - 3290
- Kanthas - H238
- Links - 7353
- Lolland - 3263
- Metamorphosis w/Knit Backing - 3367
- Migration w/Knit Backing - 3373
- Shimmering Tide w/Knit Backing - 3369
- Tumble Stones w/Knit Backing - 3371
- Wood Work w/Knit Backing - 3372

**Price Group
COM/COL
(Customer's Own
Material/Leather)**

**Fabric Approval and
Yardage**

To confirm whether a particular COM material has already been tested for use on a specific Steelcase or Nurture product or to determine actual yardage requirements:
• Visit www.steelcase.com

For additional information regarding Customer's Own Material, call 1.888.STEELCASE (1.888.783.3522) or send an e-mail to lineone@steelcase.com.

For Nurture products, call 1.800.342.8562.

Nurture Graded-In Programs

Nurture Graded-In Program: Acrylic Panel

A collection of acrylic panels are available as part of a Graded-In Program. The collection is from the Designtex Fusion offering.

These acrylic panels are Graded-In for the Sonata product only. The collection on these pages is not Graded-In for other Steel-case brands or product lines.

To order these acrylic panels, enter the finish code which corresponds with the acrylic panel price group.

Price Group	Finish Code
1	65DA
2	65DB
3	65DC
4	65DD

Then enter the acrylic panel information in the Special Acrylic Panel Information pop up window. If prompted, enter the finish code DSGNTX0002 based on the acrylic panel supplier.

Designtex

Fusion Offering

Price Group 1

Blueberry
Bluestone
Bubblegum
Canary
Candy Apple
Etch
Grape
Key Lime
Lemon
Periwinkle
Plum
Red
Sea
Searchlight
Slate
Tangerine
White
White Dot
White Rain
White Ribbon

Price Group 2

Berry Grid
Bone Linen
Cloud Grid
Espresso Sketch
Flame Sketch
Flannel Linen
Granny Smith Grid
Grapefruit Grid
Halo
Honey Sketch
Ice Sketch
Noir Linen
Orange Grid
Pistachio Sketch
Reef Linen
Scarlet Sketch
Sky Grid
Tiki Stalk
Windowbox

Price Group 3

Kenya Rush
Ogee
Prairie Stalk
Savannah Rush
Straws

Price Group 4

Coil
Convection
Desert Stalk 50% More
Drink Tray
Fingerprints
Grassland
Green Sheer Leaf
Illumination
Large Sheer Leaf
Maroon Sheer Leaf
Plain
Rock Candy
Sapphire Rock Candy
Small Sheer Leaf
Toffee Sheer Leaf
Underwood

Nurture Graded-In Program: Solid Surface

A collection of solid surfaces are available as part of a Graded-In Program. The collection is from the Corian solid surface offering.

These solid surfaces are Graded-In for the Folio, Sonata, Sync, Senza, Tava, and Leela products only. The collection on these pages is not Graded-In for other Steelcase brands or product lines.

To order these solid surfaces, enter the finish code which corresponds with the solid surface price group.

Price Group	Finish Code
A	29DA
B	29DB
C	29DC
D	29DD
E	29DE

Then enter the solid surface information in the Special Solid Surface Information pop up window. If prompted, enter the finish code CORIAN0001 based on the solid surface supplier.

Corian

Solid Surface Offering

Price Group A

Glacier White

Price Group B

Abalone
Aurora
Cameo White
Canyon
Cobalt
Flint
Maui
Mojave
Moss
Platinum
Sahara
Sand
Sandstone
Savannah
Silt
Tarragon
Vanilla

Price Group C

Acorn
Adobe
Bethany
Blue Crush
Blue Pebble
Canyon Trail
Cocoa Brown
Cottage Lane
Doeskin
Fossil
Granola
Gray Fieldstone
Gray Pebble
Mardi Gras
Matterhorn
Medea
Mosaic
Night Sky
Oat
Pine
Riviera
Sage Graystone
Shale
Silver Birch
Stone Harbor
Suede
Willow

Price Group D

Anthracite
Azurite
Bronze Patina
Bronzite
Concrete
Copperite
Designer White
Dove
Fawn
Graphic Blue
Green Tea
Hot
Lilac
Mandarin
Nocturne
Olivite
Pompeii Red
Raffia
Rice Paper
Serene Sage
Silverite
Sun
Tranquil
Venaro White
Whisper
White Jasmine

Price Group E

Aqualite
Arctic Blueberry
Arctic Ice
Arctic Lime
Arctic Mint
Arctic Strawberry
Aztec Gold
Blueberry Ice
Burlled Beach
Chamois
Cinnabar
Cirrus White
Clam Shell
Earth
Ecu
Elderberry
Glacier Ice
Graylite
Jasmine
Juniper
Lava Rock
Lime Ice
Mint Ice
Natural Gray
Rain Cloud
Rosemary
Saffron
Sagebrush
Sandalwood
Slate
Sonora
Sorrel
Strawberry Ice
Thyme
Tumbleweed
Verde
Witch Hazel

Nurture Graded-In Program: Upholstery

A collection of textiles are available as part of a Graded-In Program. The collection from the leading suppliers in the market consists of high-performance textiles that meet the demands of healthcare environments. Note that not all fabrics can be applied to all seating products. Refer to the Steelcase COM database for the most current application information.

To order these fabrics, enter the finish code which corresponds with the fabric price group.

Price Group	Finish Code
2	59DB
3	59DC
4	59DD
5	59DE
6	59DF
7	59DG
8	59DH
9	59DJ
10	59DK

Then enter the fabric information in the Special Fabric Information pop up window. Enter the appropriate finish code from the list below, based on the fabric supplier.

Supplier	Finish Code
Architex	ARCHTX0001
ArcCom	ARCCOM0001
CF Stinson	CFSTIN0001
DesignTex	DSGNTX0001
Maharam	MAHARA0001
Momentum	MOMENT0001
Ultrafabrics	ULTRAF0001

Fabric application direction must be specified.

► See page 702 for *Fabric Application Direction Guidelines* to ensure fabric is specified in the correct direction.

Architex

Price Group 5

Daytona
Linen

Price Group 6

Ellipse
Joy
Matrix
Radius

Price Group 7

Animal
Authentec
Daybreak
Hyde
Patent
Sprig
Tegan
Tibet
Vanish
Voila

Price Group 8

Bonnie
Delight
Easton
Fish Out Of Water
Kenga
Mabel
Pick Up Sticks
Ruth
Sarah
Spellbound
Thrive
Your Bird Can Sing

Price Group 9

Bamboo Mate
Brook
Burst
Follow Me
Morin
Nili
Ripples

Price Group 10

Pelle

Arc-Com

Arc-Com graded-in fabrics can only be used on Nurture brand products.

Price Group 4

Duchess
Illusion
Lancaster

Price Group 5

Alamo
Cassio
Durango
Frontier
Gatsby
Pebble Beach
Shimmer
Silver Birch
Strata
Terra

Price Group 6

Allegra
Bravo
Checkmate
Chit-Chat
Etch
Fireflies
Gem
Grand Central
Grassland
Hopscotch
Jing
Leonardo
Lotus
Matrix
Palatine
Panache
Pinpoint
Sierra
Silverado
South Street
Suede Sensation
Sylvan
Tribeca
Vibrato
Willow

Price Group 7

Abacus
Aline
Aruba
Ashanti
Bauble
Beat Box
Bourbon Street
Broadway
Bronco
Cadence
Carnival
Dorset
Eclipse
Élan
Grammercy Park
Hemisphere
Hydro
Iguana
Intaglio
Iron Gate
Link
Mirage
Moon Beam
Mystique
Notting Hill
Pinball
Pong
Quadrant
Rhythm
Savannah
Stonehenge
Sublime
Symphony
Trio
Vibe
Whirlwind
Wonderland

Price Group 8

Bounce
Bubbly
Circuit
Diamond Derby
Espirit
Flora
Forsythia
Gamble
Heirloom
Jardin
Kalahari
Kendo
Kensington
Lily Pond
Masquerade
Nikko
Oasis
Piazza
Posh
Radiant
Riviera
Royal Garden
Salsa
Seagrass
Sherwood
Spotlight
Spring
Strand-It
Tango
Tatami
Tuscany
Victoria
Volley
Yoyo

Price Group 9

Francesca Wool
Francesca Wool II
Groovy
Juliet
Sagrada
Uptown
Wind Chime

Price Group 10

Fantasia
Far Out

CF Stinson

Price Group 3

Laredo
Rally

Price Group 4

Avant
Bistro
Checkmate
Cumulus
Moccasin
Naugasoft
Oxford
Rialto
Shantung
Simplicity
Symphony Classic
Whisper
Ziggy

Price Group 5

Chroma
Cirque
Dash
Geomet
Liquid
Matrix
Napa
Raffia
Southampton
Tendrill
Tessuto
Whitney

Price Group 6

Persuasion
In The Round w/Stakleen
Script
Snuggle
Sundance w/Stakleen

Price Group 7

Adirondack
Aspen
Banyan
Bali
Bari
Beeline
Block Party
Bower
Capreni
Carat
Catwalk
Couplet
Cozy
Crush
Dodgeball
Eli
Equinox
Folio
Hands On
Martini
Match Point
Mingle
Olympus
Over Under (By Patty Madden)
Petals
Pinstripe
Raquette
Rivera
Silverado W/Agion
Spandrel
Sterling W/Agion
Straight And Narrow
Tweed
Twist
Vibe
Wink W/Agion
Ybor

Price Group 8

Balance Beam
Cinnamon Blossom
Colden
Courtyard
Eclipse
Flutter
Geodesic
Hoopla
Labyrinth
Lucky Charm
Panache
Skyline
Sumatran Palm
Sunburst
Vintage
Wired

Price Group 9

Chi w/Agion
Daddy-O w/Agion
Good Fortune w/Agion
Haiku w/Agion
Jam Session w/Agion
Jump w/Agion
Now & Zen w/Agion
Tatami w/Agion
True Path w/Agion
Tuscan Lattice
Umbrian Stripe
Up Tempo w/Agion
Zen Garden w/Agion

Price Group 10

Double Time w/Agion
Glisten
In The Groove w/Agion
Mesa
Tuscan Garden
Tuscan Hills
Umbrian Landscape
Umbrian Rain
Umbrian Village
Verve w/Agion
Volterra-Hc

Designtex

Price Group 4

Bolzano
Kalanga
Metta
Parga
Rondine
Sorano
Spandau
Tarascon

Price Group 5

Alcazar
Annex
Avenza
Breena
Figure Eight
Florin
Inside Edge
Leafette
Lino
Pianta
Prism
Rumeli
Skylark

Price Group 6

Acacia
Agave
Alistair
Amuse
Anello
Arlington
Banda
Barnsbury
Bounce
Cassava
Chicory
Circolo
Copa
Dahlia
Dot To Dot
Downtown
Drawing Straws
Friendly Faux
Griglia
Gujarat
Hula Hoop
Kenaf
Lindos
Pueblo
Quintessence
Rice
Seed
Senna
Swing Set
Tartan
Terrain
Tumbleweed
Vinca

Price Group 7

Alemanya
Alkai
Amaranth
Basket Weaver
Bon Bon
Bossa Nova
Calm
Clovis
Coperta
Details
Dodge Ball
Dodge Ball Too
Faux Sure
Flux
Four Square
Inertia
Jungle Gym
Line Item
Mena
Minuet
Oscillate
Pasa Doble
Pattino
Prana
Samba
Samba Otra Vez
See Saw
Spiro
Sprocket
Tinos
Tupi
Uptown
Widget

Price Group 8

Boreas
Honor Plus
Maglia
Nexus
Southside

Price Group 10

Journey

Maharam

Maharam graded-in fabrics can only be used on Nurture brand products.

Price Group 5

Article
Ledger

Price Group 6

Candid
Chime
Flicker
Lariat
Petal
Quick
Reverie

Price Group 7

Align
Alloy
Assemblage
Beside
Bop
Chance
Corner
Crush
Current
Double Check
Kernel
Scuba
Trait
Wafer

Price Group 8

Akimbo
Box
Comment
Dart
Decode
Floret
Intertwine
Scout
Venn
Verse

Price Group 10

Chenille Cord

Momentum

Momentum graded-in fabrics can only be used on Nurture brand products.

Price Group 3

Cashmere

Price Group 4

Array
Crete
Fleck
Sublime
Tatami

Price Group 5

Bravo
Crypton Suede
Echo
Evoke
Foray
Jolt
Max
Smart Suede
Tact

Price Group 6

Brea
Clue
Crux
Icon
Kinetic
Lumiere
Paragon
Query
Radiate
Rio
Topanga
Tweed
Viva
Zoom

Price Group 7

Amenity
Bandwidth
Delmonico
Feliz
Frolic
Huntington
Hyphen
Jax
Jest
Locale
Maxim
Narration
Premise
Schmooze
Sway
Telegram

Price Group 8

Ardour
Calabasas
Catalogue
Charade
Inhabit
Pomona
Recollection
Soma

Price Group 9

Effloresce
Emanate

Ultrafabrics

Price Group 6

Ultraleather

Price Group 7

Promessa

Fabric Application Direction Guidelines

What is the issue?

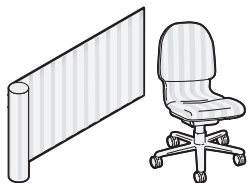
Some textiles are simple and look the same regardless of how you apply them to a product. Other fabrics are patterned, textured, or have luster that will have a distinctly different appearance applied in a different direction on a chair. Because of these differences, and the fact that there are limits to how some fabrics can be applied to Nurture products, it is important to understand fabric application direction when ordering a product to avoid being disappointed.

Talking about direction

Fabrics come on rolls. The long yarns that run down the length of the roll are called the “warp” yarns. These yarns are used to define the direction you are viewing the fabric as it is applied to a chair. Fabric directionality is determined by how the fabric comes off the roll.



It is NOT determined by the way the pattern looks on the product. For example, the image below shows the fabric applied warped horizontal although the stripes appear vertical.



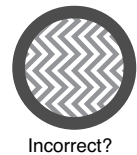
Terminology

Steelcase uses the terms warped horizontal and warped vertical. There are other terms within the industry that are used that have the same meaning:

- Warped horizontal is also referred to as:
 - railroaded or across roll
- Warped vertical is also referred to as:
 - woven way, down roll, or top out

Why is it important?

Dealers must specify fabric application direction when ordering COMs and Nurture Graded-In fabrics. We require the dealer to specify the direction because we do not know which way customers want to see a pattern on the furniture. Therefore, it is critical to know how the pattern is run on the roll to ensure that Nurture builds and ships each order to the customer’s expectation each and every time.



How do I know which way the fabric comes off the roll?

Most textile companies will swatch their fabrics in a warp vertical (woven way, down roll) direction. Some exceptions might be made to address patterns especially with stripes. Typically, when a fabric is swatched in a warp horizontal (railroad or across roll) direction, the direction is noted on the swatch card or fabric sample. If in doubt of a fabric direction, we encourage you to contact the textile vendor for clarification.

Vinyl

Vinyl generally only passes on Nurture product in a horizontal or across roll direction. This is due to physical properties of the material. If a vinyl is applied in the opposite direction, too much stretch in the material can compromise the overall aesthetics of the final upholstery. If a patterned vinyl is being specified and the vinyl must be run in a vertical direction, pre-approval must be arranged through Nurture. Nurture will consider the request and a decision will be made based on the specific vinyl and product combination. Contact Nurture’s Customer Care line.

Required Action Steps before Specifying

1. Verify by using Steelcase’s COM website that the fabric is approved on the product.
2. Verify the direction that the fabric can be applied. Occasionally a fabric is only approved in one direction.
3. Confirm with the customer how they want the fabric to look on the furniture.
4. Confirm using the swatch card or vendor’s website the direction the sample is shown.
5. Now you’re ready to place the order.