



CI 481 612

Stainless steel frame

Width 30" (90 cm)

Optional accessories

GP 900 001

Stainless steel frying pan

Non-stick coating, for ø 6" cooking zone.

GP 900 003

Stainless steel frying pan

Non-stick coating, for ø 8" cooking zone.

Induction cooktop

CI 481

- Sturdy stainless steel frame
- Frying sensor function
- Twist-Pad control with removable magnetic knob

Cooking zones

1 induction cooking zone ø 11" (2,400 W, with booster 3,600 W),
 1 induction cooking zone ø 8" (2,200 W, with booster 3,300 W).
 2 induction cooking zone ø 6" (1,400 W, with booster 1,800 W).

Features

Twist-Pad control with removable magnetic knob.
 Cooking zone marking.
 Electronic power control in 17 output levels.
 Frying sensor function for ø 6" and ø 8" cooking zones.
 Booster function for each cooking zone.
 Quick boil timer, with individually adjustable boiling time.
 Cooking timer for up to 90 minutes.
 Short-term timer.
 Memory function.
 Options menu.
 Power management.

Safety

Main switch.
 Operation indication.
 Pan detection.
 Individual residual heat indication.
 Child lock.
 Safety lock.

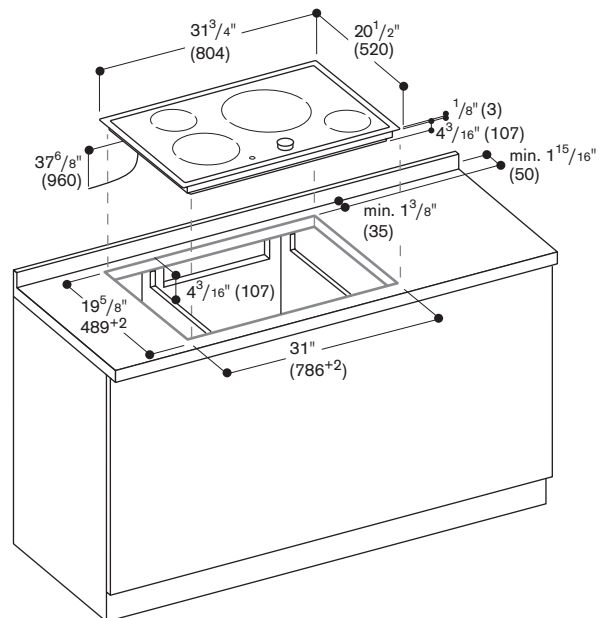
Planning notes

Operates with magnetic (induction ready pots and pans only).
 For optimal heat distribution, the use of sandwich bottom cookware is recommended.
 The wok pan WP 400 001 cannot be used with this appliance.
 Doesn't operate without Twist-Pad knob.
 Immersion depth 2 1/4".
 Intermediate shelf is recommended.
 Appliance must be fixed from underneath.
 Hard wire required.
 Cooktop clamping range: 1 3/16" - 1 9/16".

Please read the installation details regarding air ducting on page 80.

Rating

Connection cable 60" without plug.
 Total rating: 7.2 kW
 Total Amps: 30
 220 - 240 V / 60HZ



Immersion depth in the area of electric connection casing 4 3/16" (107)

Numbers indicated inside parenthesis () = mm

Intake air ducting

Applies to CI 491/CI 481

Induction cooktops have a cooling fan to protect the appliance's electronics from overheating. In the case of insufficient air circulation in the cabinet, the appliance's output will be reduced to prevent electronic damage.

A Air duct behind a cabinet or built-in oven:

An open cross-section of a minimum of $1\frac{3}{16}$ " is needed across the full width and full height of the cabinet. Cabinets with a closed bottom also need a respective cross-section in the air duct area.

B Air intake through the cabinet's back wall:

In the cabinet's back wall, plan a recess of at least $1\frac{3}{4}$ " in height from the countertop's bottom line. **The minimum width is**

- $21\frac{5}{8}$ " for the Vario VI 411/421 induction cooktop or the CI 481
- $32\frac{5}{16}$ " for the CI 491 induction cooktop

Exhaust air ducting with intermediate shelf:

To prevent the content of drawers underneath the cooktop from heating up, the use of an intermediate shelf is recommend, except for with 36" cooktops. Width of cut-out at least

- $3\frac{5}{16}$ " for a 24" to 30" induction cooktop

- * Does not apply to 36" cooktops
- ** Min. $2\frac{9}{16}$ " for cooktops with a frame and min. $2\frac{3}{4}$ " for cooktops without a frame.

Niche width needs to be at least

- $5\frac{1}{2}$ " for the VI 411/421, induction cooktop
- $3\frac{15}{16}$ " for the CI 481 induction cooktop

- * Does not apply to CI 491 induction cooktop
- ** Minimum $2\frac{9}{16}$ " (CI 491/CI 481)

Combination with AT 400

In addition to the measurements mentioned above, the following unobstructed cross sections must be planned between a part of the cabinet and the AT 400 to allow for proper intake and exhaust air circulation for the induction cooktop.

A In front of the air duct

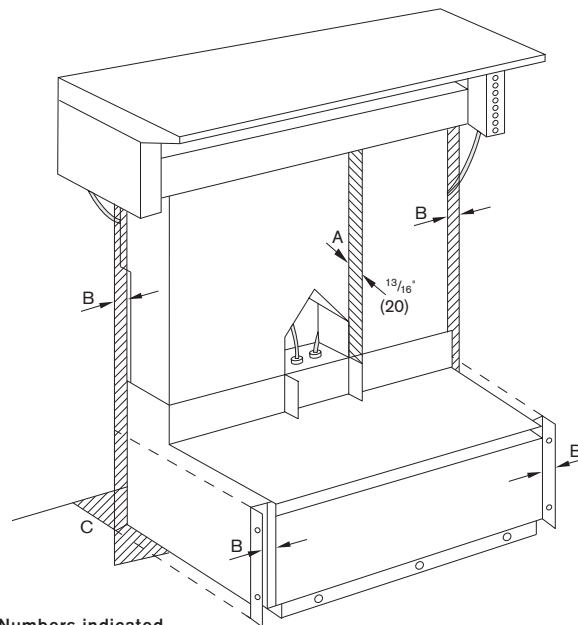
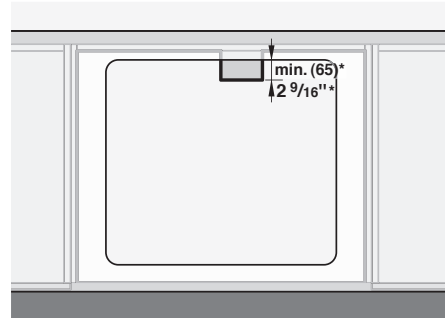
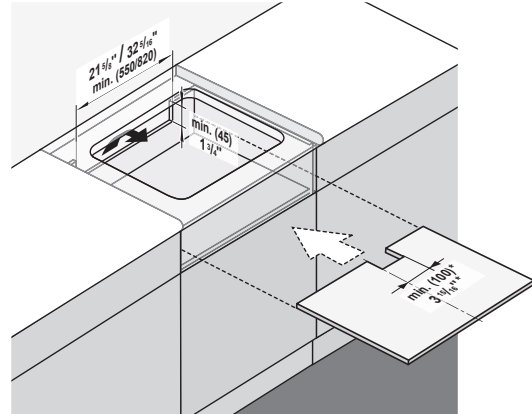
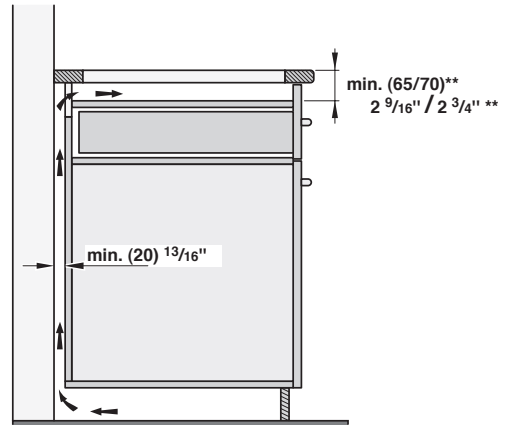
$1\frac{3}{16}$ " distance between the back side of drawers, an oven or the cabinet's interior wall.

B Adjacent to the air duct

The resulting gap between the air duct and the cabinet's side wall needs to remain open.

C At the housing's rear edge

The resulting cross section between the housing and the wall, as well as between the housing and the bottom, must remain open.



Numbers indicated inside parenthesis () = mm